

Notice: Fill out COMPLETELY and return to Conservation Division at the address below within 60 days from plugging date.

KANSAS CORPORATION COMMISSION 1347963
 OIL & GAS CONSERVATION DIVISION
WELL PLUGGING RECORD
 K.A.R. 82-3-117

Form CP-4
 March 2009
Type or Print on this Form
Form must be Signed
All blanks must be Filled

OPERATOR: License #: _____
 Name: _____
 Address 1: _____
 Address 2: _____
 City: _____ State: _____ Zip: _____ + _____
 Contact Person: _____
 Phone: (_____) _____
 Type of Well: (Check one) Oil Well Gas Well OG D&A Cathodic
 Water Supply Well Other: _____ SWD Permit #: _____
 ENHR Permit #: _____ Gas Storage Permit #: _____
 Is ACO-1 filed? Yes No If not, is well log attached? Yes No
 Producing Formation(s): List All (If needed attach another sheet)
 _____ Depth to Top: _____ Bottom: _____ T.D. _____
 _____ Depth to Top: _____ Bottom: _____ T.D. _____
 _____ Depth to Top: _____ Bottom: _____ T.D. _____

API No. 15 - _____
 Spot Description: _____
 _____ - _____ - _____ - _____ Sec. _____ Twp. _____ S. R. _____ East West
 _____ Feet from North / South Line of Section
 _____ Feet from East / West Line of Section
 Footages Calculated from Nearest Outside Section Corner:
 NE NW SE SW
 County: _____
 Lease Name: _____ Well #: _____
 Date Well Completed: _____
 The plugging proposal was approved on: _____ (Date)
 by: _____ (KCC District Agent's Name)
 Plugging Commenced: _____
 Plugging Completed: _____

Show depth and thickness of all water, oil and gas formations.

Oil, Gas or Water Records		Casing Record (Surface, Conductor & Production)			
Formation	Content	Casing	Size	Setting Depth	Pulled Out

Describe in detail the manner in which the well is plugged, indicating where the mud fluid was placed and the method or methods used in introducing it into the hole. If cement or other plugs were used, state the character of same depth placed from (bottom), to (top) for each plug set.

Plugging Contractor License #: _____ Name: _____
 Address 1: _____ Address 2: _____
 City: _____ State: _____ Zip: _____ + _____
 Phone: (_____) _____
 Name of Party Responsible for Plugging Fees: _____
 State of _____ County, _____, ss.
 _____ Employee of Operator or Operator on above-described well,
 (Print Name)

being first duly sworn on oath, says: That I have knowledge of the facts statements, and matters herein contained, and the log of the above-described well is as filed, and the same are true and correct, so help me God.

Submitted Electronically



Service Order #: 75152C

Date: 03-Feb-17

Well Name	Location	County	St	API#		
BRACK 1-6		SHERMAN	KS			
Formation	Cement Via	Type Of Service	Well Type	Age	AFE#	PO#
	CASING	SURFACE	OIL	NEW		

Customer: LD DRILLING

Remarks: * 80.8 bbls / 375 sks pumped
* 10.3 bbls / 47.8 sks returned
(32.6 bbls / 151.3 sks calculated annular volume)

Customer Rep: RICK WILSON PH:

WELLBORE DATA

Type	Size	Weight	Depth	Volume
Surface Casing:	8.625	24.0	443.6	
Production Casing:				
Intermediate:				
Drill Pipe:				
Tubing:				

OTHER DATA

BHT	Max PSI	Total Depth
	1,000	446.0

Packer or RetainerType / Depth:

Perf Depths:	#	Total
	0	0
	0	
	0	

Type	Size	Depth (Top)	Depth (Bot)	Volume
Liner:				
Open Hole:				

TIME	PUMP RATES		DENSITY (lb/gal)	PRESS (psi)	STG TOT (bbls)	TOTAL (bbls)	REMARKS
	WATER (gpm)	PUMP (bpm)					
2:28	66	0.0	8.26	12	7	4.5	PRIME UP PUMP
2:40	1	0.0	8.30	19	7	0.1	LOAD WELL / BREAK CIRCULATION
2:45	348	0.0	8.30	85	7	14.1	SHUT DOWN / CIRCULATION ESTABLISHED
2:53	4	0.0	14.84	42	7	0.0	BATCH UP & PUMP CEMENT @ 14.8 PPG
3:12	3	0.1	14.81	55	7	84.3	SHUT DOWN / GET READY TO DROP PLUG
3:14	6	0.5	10.03	280	7	84.5	DROP PLUG / START DISPLACEMENT
3:22	2	0.0	7.42	163	7	27.9	SHUT DOWN / SHUT IN PSI / END JOB

Summary

Max Fl. Rate	Avg Fl. Rate	Max Psi	Avg Psi
0.5	2.3	396	139

Customer Acknowledgement:

Service Rating:

- Satisfactory
- Unsatisfactory

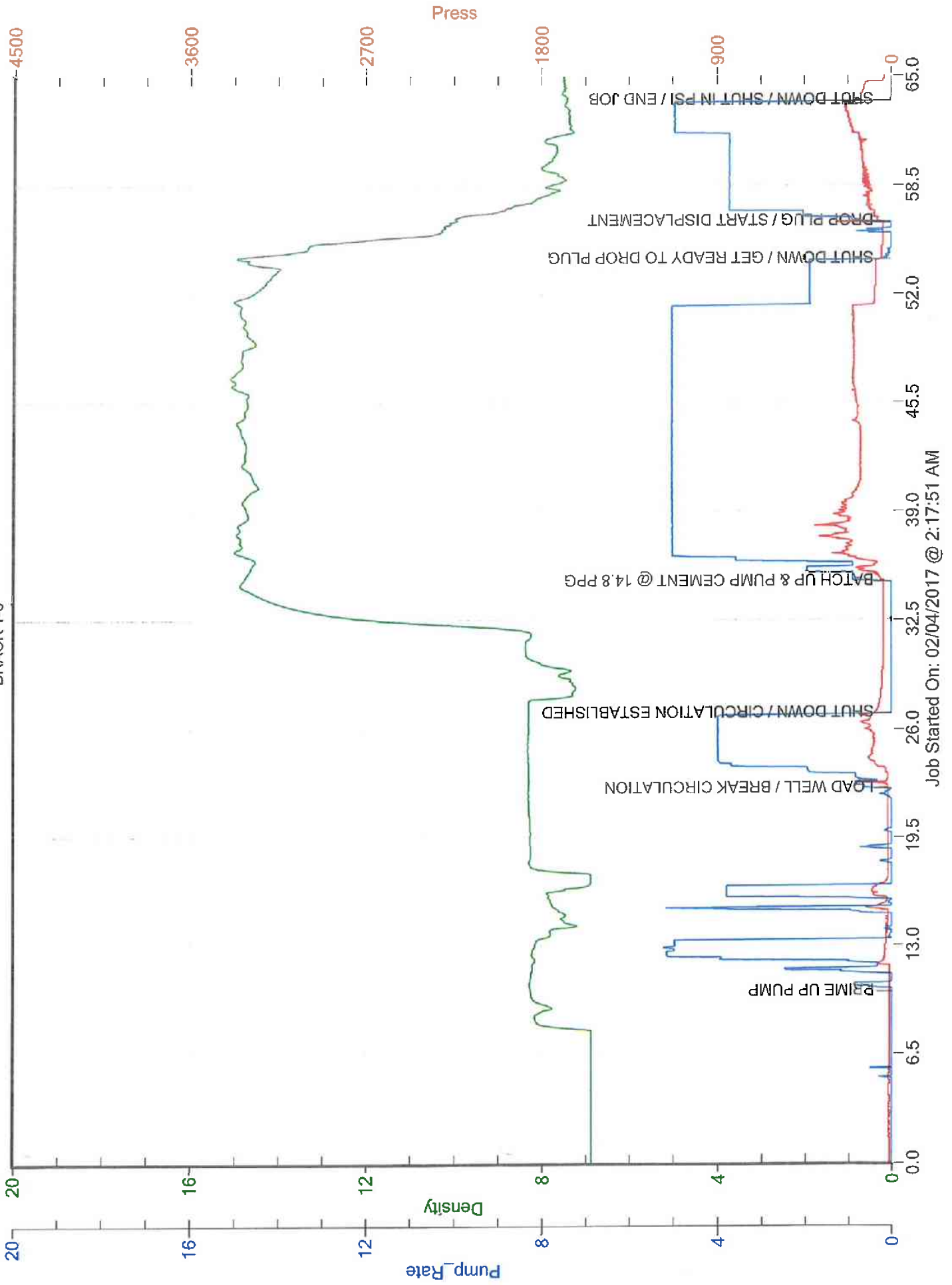
Cementer:

CORY THAUT

PRODUCTS USED

60/40 Poz + 3% CaCl + 2% Gel + 1/4 lb/sk Cello Flake

LD DRILLING BRACK 1-6





BASICSM
ENERGY SERVICES
PRESSURE PUMPING & WIRELINE

10244 NE Hwy. 61
P.O. Box 8613
Pratt, Kansas 67124
Phone 620-672-1201

FIELD SERVICE TICKET
1718 09984 A

DATE _____ TICKET NO. _____

DATE OF JOB		DISTRICT		NEW WELL <input checked="" type="checkbox"/> OLD WELL <input type="checkbox"/>		PROD <input type="checkbox"/> INJ <input type="checkbox"/> WDW <input type="checkbox"/>		CUSTOMER ORDER NO.:	
CUSTOMER <i>L D Drilling Inc</i>				LEASE <i>Brack</i>				WELL NO. <i>1-6</i>	
ADDRESS				COUNTY <i>Sherman</i>		STATE <i>KS</i>			
CITY		STATE		SERVICE CREW <i>Scotty, Scott, Jimmy, Ryan</i>					
AUTHORIZED BY <i>Mark Davis</i>				JOB TYPE: <i>Plug to Abandon 242</i>					
EQUIPMENT#	HRS	EQUIPMENT#	HRS	EQUIPMENT#	HRS	TRUCK CALLED	DATE	AM PM	TIME
<i>84982</i>	<i>13</i>					ARRIVED AT JOB	<i>2/14/17</i>	AM PM	<i>7:00</i>
<i>84985</i>	<i>15</i>					START OPERATION	<i>2/14/17</i>	AM PM	<i>9:28</i>
						FINISH OPERATION	<i>2/15/17</i>	AM PM	<i>2:40</i>
						RELEASED	<i>2/15/17</i>	AM PM	<i>3:30</i>
						MILES FROM STATION TO WELL			

CONTRACT CONDITIONS: (This contract must be signed before the job is commenced or merchandise is delivered).

The undersigned is authorized to execute this contract as an agent of the customer. As such, the undersigned agrees and acknowledges that this contract for services, materials, products, and/or supplies includes all of and only those terms and conditions appearing on the front and back of this document. No additional or substitute terms and/or conditions shall become a part of this contract without the written consent of an officer of Basic Energy Services LP.

SIGNED: *Mark Davis B.D.S. 01*
(WELL OWNER, OPERATOR, CONTRACTOR OR AGENT)

ITEM/PRICE REF. NO.	MATERIAL, EQUIPMENT AND SERVICES USED	UNIT	QUANTITY	UNIT PRICE	\$ AMOUNT
<i>CP103</i>	<i>60/40 POZ</i>	<i>SK</i>	<i>240</i>		
<i>CC200</i>	<i>Cement Col</i>	<i>lb</i>	<i>414</i>		
<i>CC102</i>	<i>Cellulose</i>	<i>lb</i>	<i>60</i>		
<i>CF153</i>	<i>Wooden Cement Plug</i>	<i>EA</i>	<i>1</i>		
<i>L100</i>	<i>Unit Mileage Charge Pick up</i>	<i>M1</i>	<i>100</i>		
<i>L101</i>	<i>Heavy Equipment Mileage</i>	<i>M1</i>	<i>200</i>		
<i>L113</i>	<i>Plug & Bulk Delivery Charge</i>	<i>TM</i>	<i>10.35</i>		
<i>CC204</i>	<i>Depth Charge 3001-4000'</i>	<i>Whs</i>	<i>1</i>		
<i>CL240</i>	<i>Blending & Mixing Service Charge</i>	<i>SK</i>	<i>240</i>		
<i>5003</i>	<i>Service Supervisor 1st 8 hrs</i>	<i>EA</i>	<i>1</i>		
SUB TOTAL					

CHEMICAL / ACID DATA:			

SERVICE & EQUIPMENT	%TAX ON \$	
MATERIALS	%TAX ON \$	
TOTAL		<i>5,498.48</i>

SERVICE REPRESENTATIVE <i>[Signature]</i>	THE ABOVE MATERIAL AND SERVICE ORDERED BY CUSTOMER AND RECEIVED BY: <i>L D Drilling B.D.S. 01</i> (WELL OWNER OPERATOR CONTRACTOR OR AGENT)
---	--

FIELD SERVICE ORDER NO. _____

Customer <i>L.D. Drilling Inc</i>		Lease No.		Date <i>2/15</i>	
Lease <i>Black</i>		Well # <i>1-6</i>			
Field Order # <i>09934 A</i>	Station <i>Pratt, KS</i>	Casing <i>4 1/2 O.P.</i>	Depth <i>3250</i>	County <i>Shepherd</i>	State <i>KS</i>
Type Job <i>Plug to Abandon 242</i>			Formation	Legal Description <i>6 65 34</i>	

PIPE DATA		PERFORATING DATA		FLUID USED		TREATMENT RESUME		
Casing Size	Tubing Size	Shots/Ft		Acid	RATE	PRESS	ISIP	
<i>4 1/2 O.P.</i>							5 Min.	
Depth <i>3250</i>	Depth	From	To	Pre Pad	Max			
Volume <i>54.215</i>	Volume	From	To	Pad	Min		10 Min.	
Max Press	Max Press	From	To	Frac	Avg		15 Min.	
Well Connection <i>4 1/2</i>	Annulus Vol.	From	To		HHP Used		Annulus Pressure	
Plug Depth	Packer Depth	From	To	Flush	Gas Volume		Total Load	

Customer Representative <i>Rick</i>			Station Manager <i>Scotty</i>			Treater <i>Scott Cousins</i>		
Service Units	<i>3913</i>	<i>84991</i>	<i>84992</i>	<i>84993</i>	<i>84995</i>			
Driver Names	<i>Sp...</i>	<i>W...</i>	<i>P...</i>	<i>S...</i>				

Time	Casing Pressure	Tubing Pressure	Bbls. Pumped	Rate	Service Log
<i>7:00</i>					<i>On location Safety Meeting Rig up</i>
					<i>hole loaded with rig</i>
<i>9:28</i>	<i>300</i>			<i>4</i>	<i>Pump H2O spacer 3250'</i>
<i>9:30</i>	<i>250</i>		<i>15</i>	<i>4</i>	<i>Mix 50 SKS 60/40 13.7 mg</i>
<i>9:34</i>	<i>200</i>		<i>12.9</i>	<i>4</i>	<i>Pump H2O spacer</i>
<i>9:35</i>	<i>75</i>		<i>5</i>	<i>4</i>	<i>Start mud displacement</i>
<i>9:45</i>	<i>0</i>		<i>37</i>	<i>0</i>	<i>Shut down</i>
<i>10:38</i>					<i>Lead hole with Rig 2300'</i>
<i>10:40</i>	<i>200</i>			<i>4</i>	<i>Pump H2O spacer</i>
<i>10:42</i>	<i>200</i>		<i>15</i>	<i>4</i>	<i>M. 100 SKS 60/40 15.7 mg</i>
<i>10:48</i>	<i>100</i>		<i>25.8</i>	<i>4</i>	<i>Pump H2O spacer</i>
<i>10:49</i>	<i>50</i>		<i>5</i>	<i>4</i>	<i>Start mud displacement</i>
<i>10:54</i>	<i>0</i>		<i>24.2</i>	<i>0</i>	<i>Shut down</i>
<i>12:50</i>					<i>lead hole with Rig 490'</i>
<i>12:52</i>	<i>80</i>			<i>4.5</i>	<i>Pump H2O spacer</i>
<i>12:55</i>	<i>120</i>		<i>15</i>	<i>4.5</i>	<i>M. 50 SKS 60/40 13.7 mg</i>
<i>12:59</i>	<i>80</i>		<i>12.9</i>	<i>4.5</i>	<i>Start Displacement</i>
<i>1:00</i>	<i>0</i>		<i>3</i>	<i>0</i>	<i>Shut down</i>
					<i>Pump H2O spacer 40'</i>
<i>11:30</i>	<i>0</i>			<i>3</i>	<i>M. 10 SKS 60/40 13.7</i>
<i>11:31</i>	<i>0</i>		<i>26</i>	<i>0</i>	<i>Shut down Cement completed</i>
<i>11:40</i>	<i>0</i>		<i>7</i>	<i>0</i>	<i>Plug in Rate hole 30 SKS</i>