



TEMPORARY ABANDONMENT WELL APPLICATION

OPERATOR: License# _____
 Name: _____
 Address 1: _____
 Address 2: _____
 City: _____ State: _____ Zip: _____ + _____
 Contact Person: _____
 Phone: (_____) _____
 Contact Person Email: _____
 Field Contact Person: _____
 Field Contact Person Phone: (_____) _____

API No. 15- _____
 Spot Description: _____
 _____ - _____ - _____ - _____ Sec. _____ Twp. _____ S. R. _____ E W
 _____ feet from N / S Line of Section
 _____ feet from E / W Line of Section
 GPS Location: Lat: _____, Long: _____
(e.g. xx.xxxxx) (e.g. -xxx.xxxxx)
 Datum: NAD27 NAD83 WGS84
 County: _____ Elevation: _____ GL KB
 Lease Name: _____ Well #: _____
 Well Type: (check one) Oil Gas OG WSW Other: _____
 SWD Permit #: _____ ENHR Permit #: _____
 Gas Storage Permit #: _____
 Spud Date: _____ Date Shut-In: _____

	Conductor	Surface	Production	Intermediate	Liner	Tubing
Size						
Setting Depth						
Amount of Cement						
Top of Cement						
Bottom of Cement						

Casing Fluid Level from Surface: _____ How Determined? _____ Date: _____
 Casing Squeeze(s): _____ to _____ w / _____ sacks of cement, _____ to _____ w / _____ sacks of cement. Date: _____
(top) (bottom) (top) (bottom)
 Do you have a valid Oil & Gas Lease? Yes No
 Depth and Type: Junk in Hole at _____ Tools in Hole at _____ Casing Leaks: Yes No Depth of casing leak(s): _____
(depth) (depth)
 Type Completion: ALT. I ALT. II Depth of: DV Tool: _____ w / _____ sacks of cement Port Collar: _____ w / _____ sack of cement
(depth) (depth)
 Packer Type: _____ Size: _____ Inch Set at: _____ Feet
 Total Depth: _____ Plug Back Depth: _____ Plug Back Method: _____

Geological Data:

Formation Name	Formation Top	Formation Base	Completion Information
1. _____	At: _____	to _____ Feet	Perforation Interval _____ to _____ Feet or Open Hole Interval _____ to _____ Feet
2. _____	At: _____	to _____ Feet	Perforation Interval _____ to _____ Feet or Open Hole Interval _____ to _____ Feet

UNDER PENALTY OF PERJURY I HEREBY ATTEST THAT THE INFORMATION CONTAINED HEREIN IS TRUE AND CORRECT TO THE BEST OF MY KNOWLEDGE

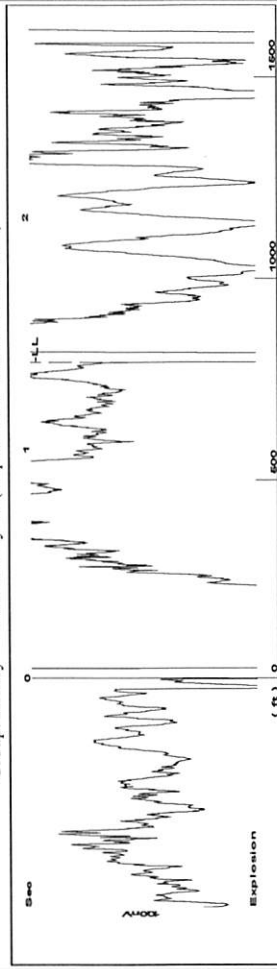
Submitted Electronically

Do NOT Write in This Space - KCC USE ONLY	Date Tested: _____	Results: _____	Date Plugged: _____	Date Repaired: _____	Date Put Back in Service: _____
	Review Completed by: _____ Comments: _____				
TA Approved: <input type="checkbox"/> Yes <input type="checkbox"/> Denied Date: _____					

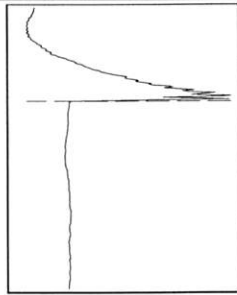
Mail to the Appropriate KCC Conservation Office:

	KCC District Office #1 - 210 E. Frontview, Suite A, Dodge City, KS 67801	Phone 620.225.8888
	KCC District Office #2 - 3450 N. Rock Road, Building 600, Suite 601, Wichita, KS 67226	Phone 316.337.7400
	KCC District Office #3 - 1500 SW Seventh Steet, Chanute, KS 66720	Phone 620.432.2300
	KCC District Office #4 - 2301 E. 13th Street, Hays, KS 67601-2651	Phone 785.625.0550

Group: Hickey Well: Hickey #8 (acquired on: 03/21/17 13:05:14)



Time 1.375 sec
 Joints 25.1711 Jts
 Depth 790.63 ft



Liquid level calculated with user supplied Acoustic Velocity

Acoustic Velocity 1150 ft/s

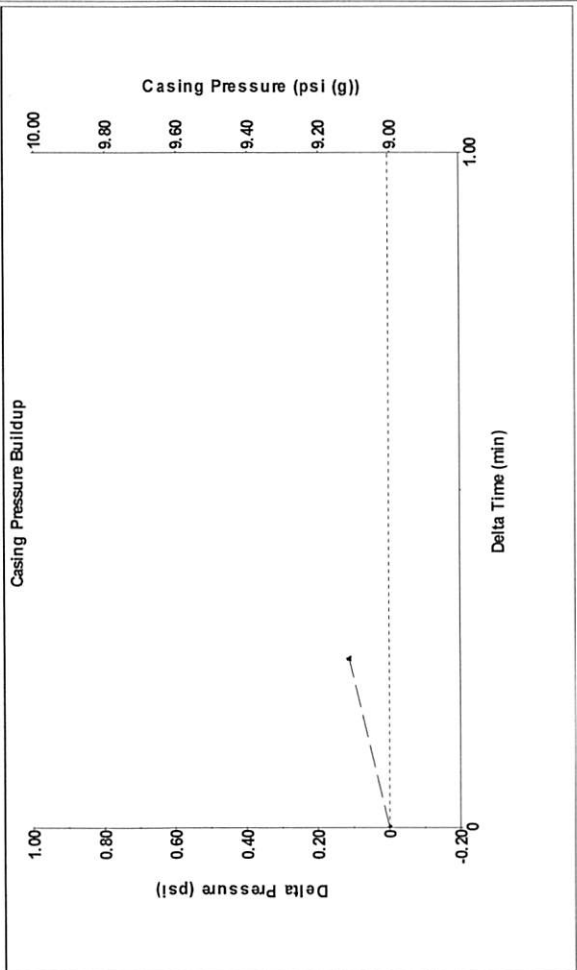
Analysis Method: Acoustic Velocity

Group: Hickey Well: Hickey #8 (acquired on: 03/21/17 13:05:14)

Production	Potential	Casing Pressure	9.0 psi (g)
Oil - *	0.0 BBL/D	Casing Pressure Buildup	0.1 psi
Water - *	0.0 BBL/D	Gas/Liquid Interface Pressure	9.6 psi (g)
Gas - *	0.0 Mscf/D	Liquid Level Depth	790.63 ft
IPR Method	Vogel	Pump Intake Depth	3000.00 ft
PBHP/SBHP	0.69	Formation Depth	3150.00 ft
Production Efficiency	48.5	Acoustic Velocity	1150 ft/s
Oil 40 deg.API		Formation Submergence	2209 ft
Water 1.05 Sp.Gr.H2O		Total Gaseous Liquid Column HT (TVD)	1788 ft
Gas 0.85 Sp.Gr.AIR		Equivalent Gas Free Liquid HT (TVD)	
Acoustic Velocity	1150 ft/s	Acoustic Test	
Producing	Annular Gas Flow	3 Mscf/D	
	% Liquid	81 %	
	Pump Intake	611.5 psi (g)	
	Producing BHP	671.1 psi (g)	
	Static BHP	983.8 psi (g)	

Entered Acoustic Velocity for Liquid Level depth determination

Group: Hickey Well: Hickey #8 (acquired on: 03/21/17 13:05:14)

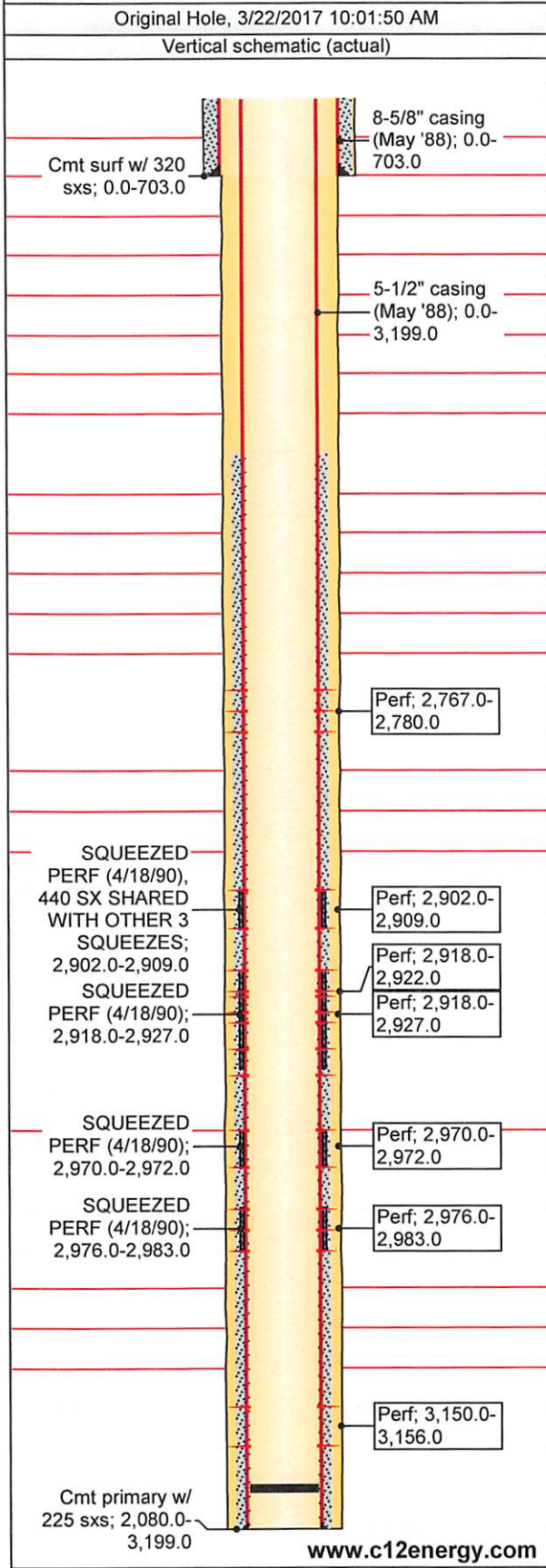


Change in Pressure 0.11 psi
 Change in Time 0.25 min
 PT 15086
 Range

0 - ? psi

API/UWI 15-167-22809	Operator C12: Kansas Oil, LLC	Well Status TA	License #
Rig Release Date 6/4/1988	Surface Legal Location 14S 13W Sec 30 E2 SE SW NW	Latitude (°) 38° 48' 26.788" N	Longitude (°) 98° 48' 49.568" W
Abandon Date 1/1/1900	Original KB Elevation (ft) 1,748.00	Total Depth (ftKB) 3,199.0	PBTD (All) (ftKB) Original Hole - 3,174.0

Comment



Fluid Level Tests

Date	Fluid Level (ftKB)
------	--------------------

Rod Pump Details

Current Stroke Length (in)	Strokes Per Minute (spm)
----------------------------	--------------------------

Wellbore Sections

Section Description	Size (in)	Actual Top Depth (ftKB)	Actual Btm Depth (ftKB)
	10 5/8	0.0	703.0
	8	703.0	3,199.0

Casing Components

Item Description	ID (in)	Grade	Joints	Length (ft)	Btm (ftKB)
8-5/8" casing (May '88)				703.01	703.0
5-1/2" casing (May '88)				3,199.04	3,199.0

Tubing Components

Item Description	OD (in)	Wt (lb/ft)	Grade	Joints	Length (ft)	Btm (ftKB)
------------------	---------	------------	-------	--------	-------------	------------

Rod Components

Item Description	OD (in)	Wt (lb/ft)	Grade	Joints	Length (ft)	Btm (ftKB)
------------------	---------	------------	-------	--------	-------------	------------

Stimulations & Treatments

Date	Type	Min Top Depth (ftKB)	Max Btm Depth (ftKB)
4/23/1990	1000 gals 15% (4/23/90)	2,767.0	2,780.0
Max Treat Pressure (psi)	Avg Treat Pressure (psi)	Max Treat Rate (gpm)	Avg Treat Rate (gpm)
Stim/Treat Fluid			

Date	Type	Min Top Depth (ftKB)	Max Btm Depth (ftKB)
4/21/1990	Retrt C & D w/ 500 gals 28% NE (4/21/90)	2,902.0	2,922.0
Max Treat Pressure (psi)	Avg Treat Pressure (psi)	Max Treat Rate (gpm)	Avg Treat Rate (gpm)
Stim/Treat Fluid			

Date	Type	Min Top Depth (ftKB)	Max Btm Depth (ftKB)
4/20/1990	500 gals 15% DSFF (4/20/90)	3,150.0	3,156.0
Max Treat Pressure (psi)	Avg Treat Pressure (psi)	Max Treat Rate (gpm)	Avg Treat Rate (gpm)
Stim/Treat Fluid			

Date	Type	Min Top Depth (ftKB)	Max Btm Depth (ftKB)
6/2/1988	3500 gals 28% NE (6/2/88)	2,902.0	2,927.0
Max Treat Pressure (psi)	Avg Treat Pressure (psi)	Max Treat Rate (gpm)	Avg Treat Rate (gpm)
Stim/Treat Fluid			

Date	Type	Min Top Depth (ftKB)	Max Btm Depth (ftKB)
6/1/1988	3000 gals 28% NE (6/1/88)	2,970.0	2,983.0
Max Treat Pressure (psi)	Avg Treat Pressure (psi)	Max Treat Rate (gpm)	Avg Treat Rate (gpm)
Stim/Treat Fluid			

Conservation Division
District Office No. 4
2301 E. 13th Street
Hays, KS 67601-2651



Phone: 785-625-0550
Fax: 785-625-0564
<http://kcc.ks.gov/>

Pat Apple, Chairman
Shari Feist Albrecht, Commissioner
Jay Scott Emler, Commissioner

Sam Brownback, Governor

March 23, 2017

Parker Stevens
C12 Kansas Oil, LLC
1900 WAZEE ST.
SUITE 200
DENVER, CO 80202

Re: Temporary Abandonment
API 15-167-22809-00-01
HICKEY 8
NW/4 Sec.30-14S-13W
Russell County, Kansas

Dear Parker Stevens:

"Your temporary abandonment (TA) application for the well listed above has been approved. In accordance with K.A.R. 82-3-111 the TA status of this well will expire 03/23/2018.

- * If you return this well to service or plug it, please notify the District Office.
- * If you sell this well you are required to file a Transfer of Operator form, T-1.
- * If the well will remain temporarily abandoned, you must submit a new TA application, CP-111, before 03/23/2018.

You may contact me at the number above if you have questions.

Very truly yours,

RICHARD WILLIAMS "