



# TEMPORARY ABANDONMENT WELL APPLICATION

OPERATOR: License# \_\_\_\_\_  
 Name: \_\_\_\_\_  
 Address 1: \_\_\_\_\_  
 Address 2: \_\_\_\_\_  
 City: \_\_\_\_\_ State: \_\_\_\_\_ Zip: \_\_\_\_\_ + \_\_\_\_\_  
 Contact Person: \_\_\_\_\_  
 Phone: ( \_\_\_\_\_ ) \_\_\_\_\_  
 Contact Person Email: \_\_\_\_\_  
 Field Contact Person: \_\_\_\_\_  
 Field Contact Person Phone: ( \_\_\_\_\_ ) \_\_\_\_\_

API No. 15- \_\_\_\_\_  
 Spot Description: \_\_\_\_\_  
 \_\_\_\_\_ - \_\_\_\_\_ - \_\_\_\_\_ - \_\_\_\_\_ Sec. \_\_\_\_\_ Twp. \_\_\_\_\_ S. R. \_\_\_\_\_  E  W  
 \_\_\_\_\_ feet from  N /  S Line of Section  
 \_\_\_\_\_ feet from  E /  W Line of Section  
 GPS Location: Lat: \_\_\_\_\_, Long: \_\_\_\_\_  
(e.g. xx.xxxxx) (e.g. -xxx.xxxxx)  
 Datum:  NAD27  NAD83  WGS84  
 County: \_\_\_\_\_ Elevation: \_\_\_\_\_  GL  KB  
 Lease Name: \_\_\_\_\_ Well #: \_\_\_\_\_  
 Well Type: (check one)  Oil  Gas  OG  WSW  Other: \_\_\_\_\_  
 SWD Permit #: \_\_\_\_\_  ENHR Permit #: \_\_\_\_\_  
 Gas Storage Permit #: \_\_\_\_\_  
 Spud Date: \_\_\_\_\_ Date Shut-In: \_\_\_\_\_

	Conductor	Surface	Production	Intermediate	Liner	Tubing
Size						
Setting Depth						
Amount of Cement						
Top of Cement						
Bottom of Cement						

Casing Fluid Level from Surface: \_\_\_\_\_ How Determined? \_\_\_\_\_ Date: \_\_\_\_\_  
 Casing Squeeze(s): \_\_\_\_\_ to \_\_\_\_\_ w / \_\_\_\_\_ sacks of cement, \_\_\_\_\_ to \_\_\_\_\_ w / \_\_\_\_\_ sacks of cement. Date: \_\_\_\_\_  
(top) (bottom) (top) (bottom)  
 Do you have a valid Oil & Gas Lease?  Yes  No  
 Depth and Type:  Junk in Hole at \_\_\_\_\_  Tools in Hole at \_\_\_\_\_ Casing Leaks:  Yes  No Depth of casing leak(s): \_\_\_\_\_  
(depth) (depth)  
 Type Completion:  ALT. I  ALT. II Depth of:  DV Tool: \_\_\_\_\_ w / \_\_\_\_\_ sacks of cement  Port Collar: \_\_\_\_\_ w / \_\_\_\_\_ sack of cement  
(depth) (depth)  
 Packer Type: \_\_\_\_\_ Size: \_\_\_\_\_ Inch Set at: \_\_\_\_\_ Feet  
 Total Depth: \_\_\_\_\_ Plug Back Depth: \_\_\_\_\_ Plug Back Method: \_\_\_\_\_

**Geological Data:**

Formation Name	Formation Top	Formation Base	Completion Information
1. _____	At: _____	to _____ Feet	Perforation Interval _____ to _____ Feet or Open Hole Interval _____ to _____ Feet
2. _____	At: _____	to _____ Feet	Perforation Interval _____ to _____ Feet or Open Hole Interval _____ to _____ Feet

UNDER PENALTY OF PERJURY I HEREBY ATTEST THAT THE INFORMATION CONTAINED HEREIN IS TRUE AND CORRECT TO THE BEST OF MY KNOWLEDGE

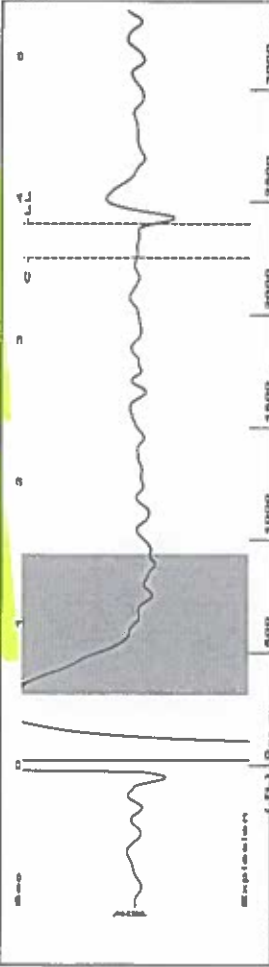
Submitted Electronically

<b>Do NOT Write in This Space - KCC USE ONLY</b>	Date Tested: _____	Results: _____	Date Plugged: _____	Date Repaired: _____	Date Put Back in Service: _____
	Review Completed by: _____ Comments: _____				
TA Approved: <input type="checkbox"/> Yes <input type="checkbox"/> Denied Date: _____					

**Mail to the Appropriate KCC Conservation Office:**

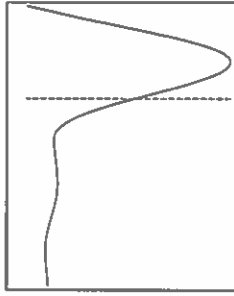
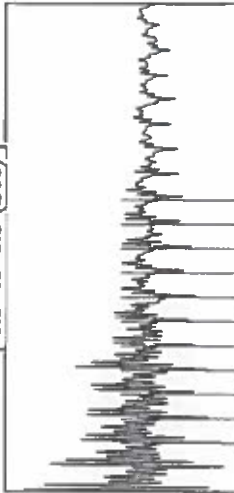
	KCC District Office #1 - 210 E. Frontview, Suite A, Dodge City, KS 67801	Phone 620.682.7933
	KCC District Office #2 - 3450 N. Rock Road, Building 600, Suite 601, Wichita, KS 67226	Phone 316.337.7400
	KCC District Office #3 - 1500 SW Seventh Steet, Chanute, KS 66720	Phone 620.432.2300
	KCC District Office #4 - 2301 E. 13th Street, Hays, KS 67601-2651	Phone 785.261.6250

Group: TAD Well: Turrintine 4-21 (acquired on: 03/23/17 09:34:01)



Time 3.816 sec  
Joints 76.8245 Jts  
Depth 2403.07 ft

0.5 to 1.5 (Sec)

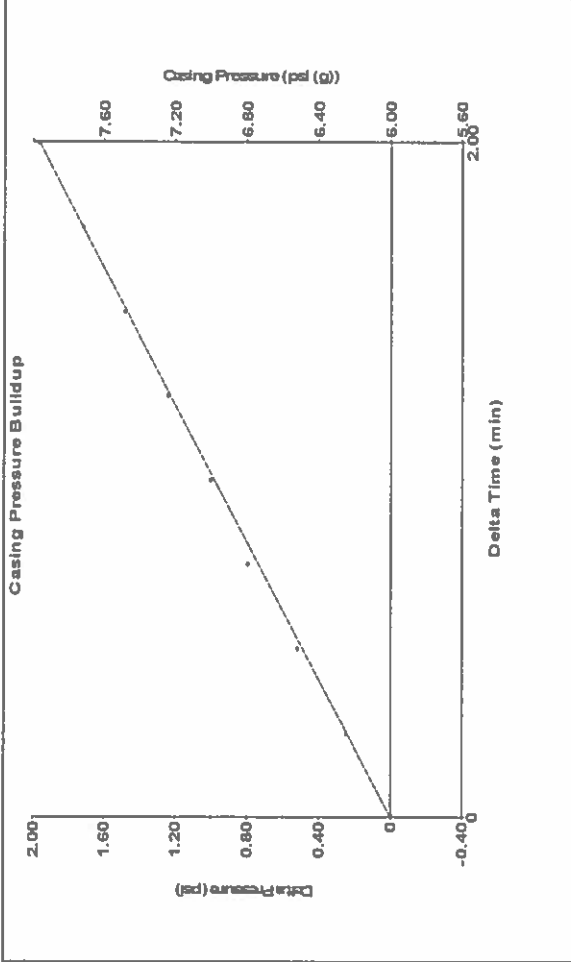


Analysis Method: Automatic

Group: TAD Well: Turrintine 4-21 (acquired on: 03/23/17 09:34:01)

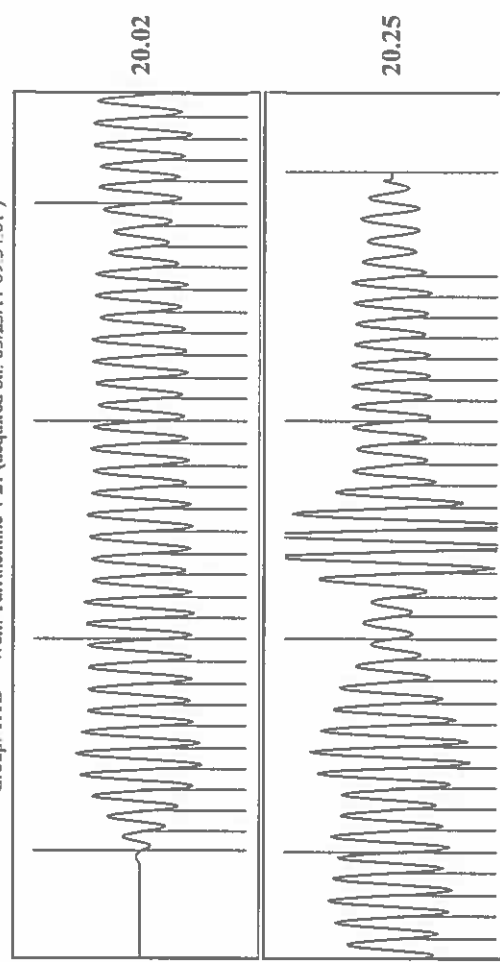
Production	Potential	Casing Pressure	6.0 psi (g)
Oil	BB/L/D	Casing Pressure Buildup	2.0 psi
Water	BB/L/D	Gas/Liquid Interface Pressure	7.3 psi (g)
Gas	Mscf/D	Liquid Level Depth	2403.07 ft
IPR Method	Vogel	Pump Intake Depth	2565.00 ft
PBHP/SBHP	0.0	Formation Depth	2570.00 ft
Production Efficiency			
Oil	40 deg API		
Water	1.05 Sp Gr H2O		
Gas	0.75 Sp Gr AIR		
Acoustic Velocity	1259.47 ft/s		
Formation Submergence			
Total Gaseous Liquid Column HT (TVD)			162 ft
Equivalent Gas Free Liquid HT (TVD)			71 ft
Acoustic Test			
Producing	Annular Gas Flow	23 Mscf/D	
	% Liquid	44 %	
Pump Intake	31.5 psi (g)		
Producing BHP	32.8 psi (g)		
Static BHP	- * - psi (g)		

Group: TAD Well: Turrintine 4-21 (acquired on: 03/23/17 09:34:01)



Change in Pressure 1.97 psi  
Change in Time 2.00 min  
PT8746 Range  
0 - 7 psi

Group: TAD Well: Turrintine 4-21 (acquired on: 03/23/17 09:34:01)



Acoustic Velocity 1259.47 ft/s  
Joints Per Second 20.1322 jts/sec  
Depth to liquid level 2403.07 ft  
Automatic Collar Count Yes  
Joints counted 67  
Joints to liquid level 76.8245  
Filler Width 18.0401  
Time to 1st Collar 0.248  
22.0401  
3.576

April 04, 2017

Katherine McClurkan  
Merit Energy Company, LLC  
13727 Noel Road, Suite1200  
Dallas, TX 75240

Re: Temporary Abandonment  
API 15-055-20742-00-00  
Turrentine 4-21  
NW/4 Sec.21-23S-34W  
Finney County, Kansas

Dear Katherine McClurkan:

"Your temporary abandonment (TA) application for the well listed above has been approved. In accordance with K.A.R. 82-3-111 the TA status of this well will expire 04/04/2018.

- \* If you return this well to service or plug it, please notify the District Office.
- \* If you sell this well you are required to file a Transfer of Operator form, T-1.
- \* If the well will remain temporarily abandoned, you must submit a new TA application, CP-111, before 04/04/2018.

You may contact me at the number above if you have questions.

Very truly yours,

Michael Maier"