



TEMPORARY ABANDONMENT WELL APPLICATION

OPERATOR: License# _____
 Name: _____
 Address 1: _____
 Address 2: _____
 City: _____ State: _____ Zip: _____ + _____
 Contact Person: _____
 Phone: (_____) _____
 Contact Person Email: _____
 Field Contact Person: _____
 Field Contact Person Phone: (_____) _____

API No. 15- _____
 Spot Description: _____
 _____ - _____ - _____ - _____ Sec. _____ Twp. _____ S. R. _____ E W
 _____ feet from N / S Line of Section
 _____ feet from E / W Line of Section
 GPS Location: Lat: _____, Long: _____
(e.g. xx.xxxxx) (e.g. -xxx.xxxxx)
 Datum: NAD27 NAD83 WGS84
 County: _____ Elevation: _____ GL KB
 Lease Name: _____ Well #: _____
 Well Type: (check one) Oil Gas OG WSW Other: _____
 SWD Permit #: _____ ENHR Permit #: _____
 Gas Storage Permit #: _____
 Spud Date: _____ Date Shut-In: _____

	Conductor	Surface	Production	Intermediate	Liner	Tubing
Size						
Setting Depth						
Amount of Cement						
Top of Cement						
Bottom of Cement						

Casing Fluid Level from Surface: _____ How Determined? _____ Date: _____

Casing Squeeze(s): _____ to _____ w / _____ sacks of cement, _____ to _____ w / _____ sacks of cement. Date: _____
(top) (bottom) (top) (bottom)

Do you have a valid Oil & Gas Lease? Yes No

Depth and Type: Junk in Hole at _____ Tools in Hole at _____ Casing Leaks: Yes No Depth of casing leak(s): _____
(depth) (depth)

Type Completion: ALT. I ALT. II Depth of: DV Tool: _____ w / _____ sacks of cement Port Collar: _____ w / _____ sack of cement
(depth) (depth)

Packer Type: _____ Size: _____ Inch Set at: _____ Feet

Total Depth: _____ Plug Back Depth: _____ Plug Back Method: _____

Geological Data:

Formation Name	Formation Top	Formation Base	Completion Information
1. _____	At: _____	to _____ Feet	Perforation Interval _____ to _____ Feet or Open Hole Interval _____ to _____ Feet
2. _____	At: _____	to _____ Feet	Perforation Interval _____ to _____ Feet or Open Hole Interval _____ to _____ Feet

UNDER PENALTY OF PERJURY I HEREBY ATTEST THAT THE INFORMATION CONTAINED HEREIN IS TRUE AND CORRECT TO THE BEST OF MY KNOWLEDGE

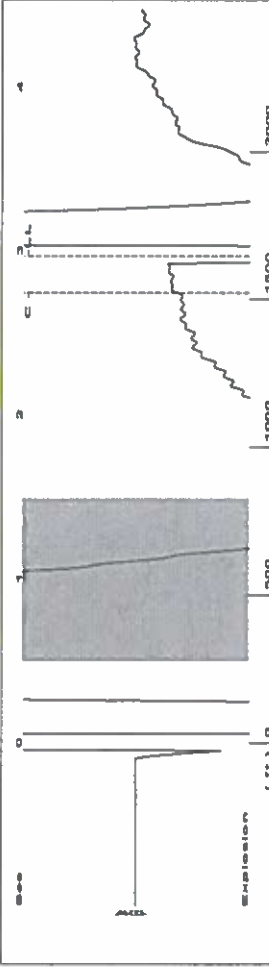
Submitted Electronically

Do NOT Write in This Space - KCC USE ONLY	Date Tested: _____	Results: _____	Date Plugged: _____	Date Repaired: _____	Date Put Back in Service: _____
	Review Completed by: _____ Comments: _____				
TA Approved: <input type="checkbox"/> Yes <input type="checkbox"/> Denied Date: _____					

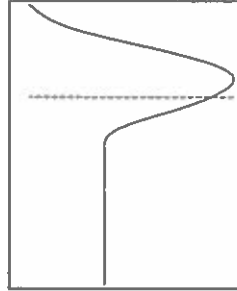
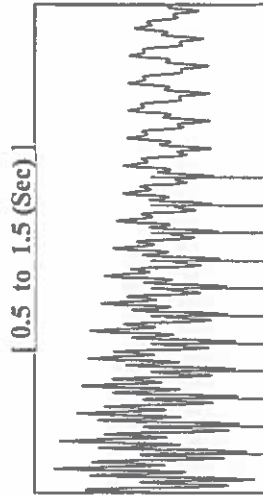
Mail to the Appropriate KCC Conservation Office:

	KCC District Office #1 - 210 E. Frontview, Suite A, Dodge City, KS 67801	Phone 620.682.7933
	KCC District Office #2 - 3450 N. Rock Road, Building 600, Suite 601, Wichita, KS 67226	Phone 316.337.7400
	KCC District Office #3 - 1500 SW Seventh Steet, Chanute, KS 66720	Phone 620.432.2300
	KCC District Office #4 - 2301 E. 13th Street, Hays, KS 67601-2651	Phone 785.261.6250

Group: TAD Well: Devore D-1 (acquired on: 03/16/17 13:51:43)



Filter Type High Pass Automatic Collar Count Yes
 Manual Acoustic Velocity 1116.2 ft/s Manual JTS/sec 176056
 Time 2.965 sec
 Joints 51.9116 Jts
 Depth 1645.60 ft

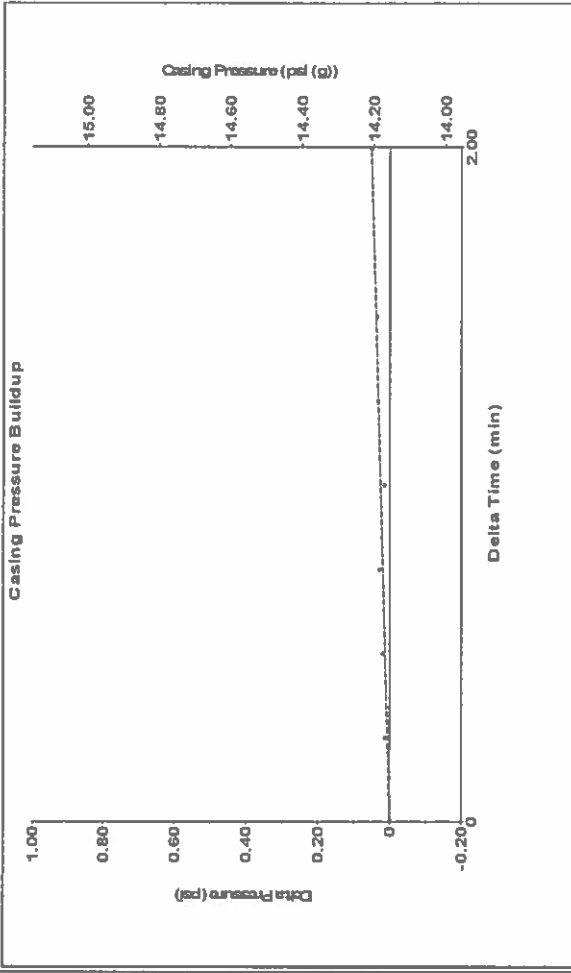


Analysis Method: Automatic

Group: TAD Well: Devore D-1 (acquired on: 03/16/17 13:51:43)

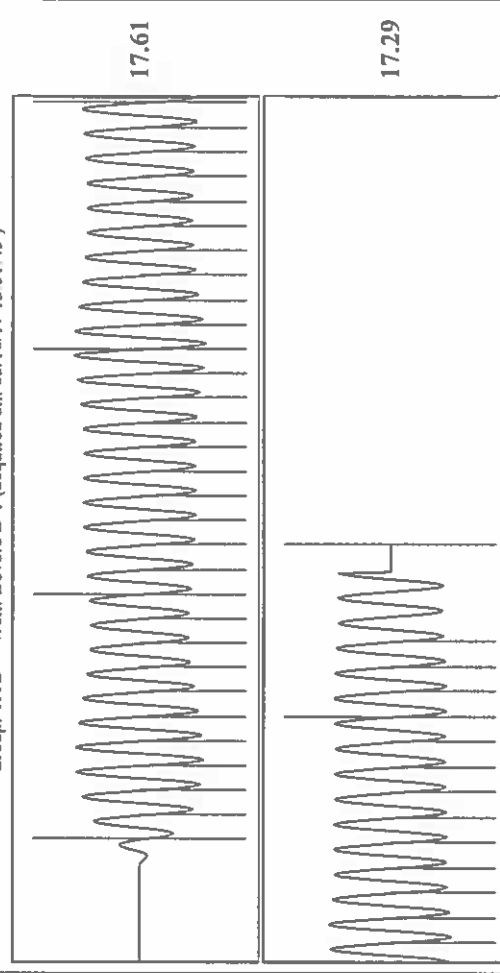
Production	Potential	Casing Pressure	14.2 psi (g)
Oil	-*- BBL/D	Casing Pressure Buildup	0.051 psi
Water	-*- BBL/D	Gas/Liquid Interface Pressure	15.6 psi (g)
Gas	-*- Mscf/D	Liquid Level Depth	1645.60 ft
IPR Method	Vogel	Pump Intake Depth	5376.00 ft
PBHP/SBHP	-*-	Formation Depth	5555.00 ft
Production Efficiency	0.0	Acoustic Velocity	1110.02 ft/s
Oil	40 deg-API	Formation Submergence	3730 ft
Water	1.05 Sp.Gr.H2O	Total Gaseous Liquid Column HT (TVD)	3730 ft
Gas	0.86 Sp.Gr.AIR	Equivalent Gas Free Liquid HT (TVD)	3730 ft
Acoustic Test		Acoustic Velocity	1110.02 ft/s
		Joints Per Second	17.5081 jts/sec
		Depth to liquid level	1645.6 ft
		Automatic Collar Count	Yes
		Joints counted	43
		Joints to liquid level	51.9116
		Filter Width	15.6056
		Time to 1st Collar	0.284
		Time to liquid level	2.74

Group: TAD Well: Devore D-1 (acquired on: 03/16/17 13:51:43)



Change in Pressure 0.05 psi
 Change in Time 2.00 min
 PT8746 Range

Group: TAD Well: Devore D-1 (acquired on: 03/16/17 13:51:43)



Acoustic Velocity 1110.02 ft/s
 Joints Per Second 17.5081 jts/sec
 Depth to liquid level 1645.6 ft
 Automatic Collar Count Yes
 Joints counted 43
 Joints to liquid level 51.9116
 Filter Width 15.6056
 Time to 1st Collar 0.284
 Time to liquid level 2.74

Conservation Division
District Office No. 1
210 E. Frontview, Suite A
Dodge City, KS 67801



Phone: 620-682-7933
<http://kcc.ks.gov/>

Pat Apple, Chairman
Shari Feist Albrecht, Commissioner
Jay Scott Emler, Commissioner

Sam Brownback, Governor

April 04, 2017

Katherine McClurkan
Merit Energy Company, LLC
13727 Noel Road, Suite 1200
Dallas, TX 75240

Re: Temporary Abandonment
API 15-055-22194-00-01
DeVore D 1
NW/4 Sec.27-26S-33W
Finney County, Kansas

Dear Katherine McClurkan:

"Your temporary abandonment (TA) application for the well listed above has been approved. In accordance with K.A.R. 82-3-111 the TA status of this well will expire 04/04/2018.

- * If you return this well to service or plug it, please notify the District Office.
- * If you sell this well you are required to file a Transfer of Operator form, T-1.
- * If the well will remain temporarily abandoned, you must submit a new TA application, CP-111, before 04/04/2018.

You may contact me at the number above if you have questions.

Very truly yours,

Michael Maier"