



**Fall & Associates**  
 Stake and Elevation Service  
 P.O. Box 222  
 Pretty Prairie, KS. 67570  
 785-243-7506

Date 2-16-17

Invoice Number 0217151

MURFIN DRILLING

1-24

Carolyn 'A'

Operator

Number

Farm Name

Cheyenne-KS

24

1s

37 w

400'FSL 600'FEL

County-State

S

T

R

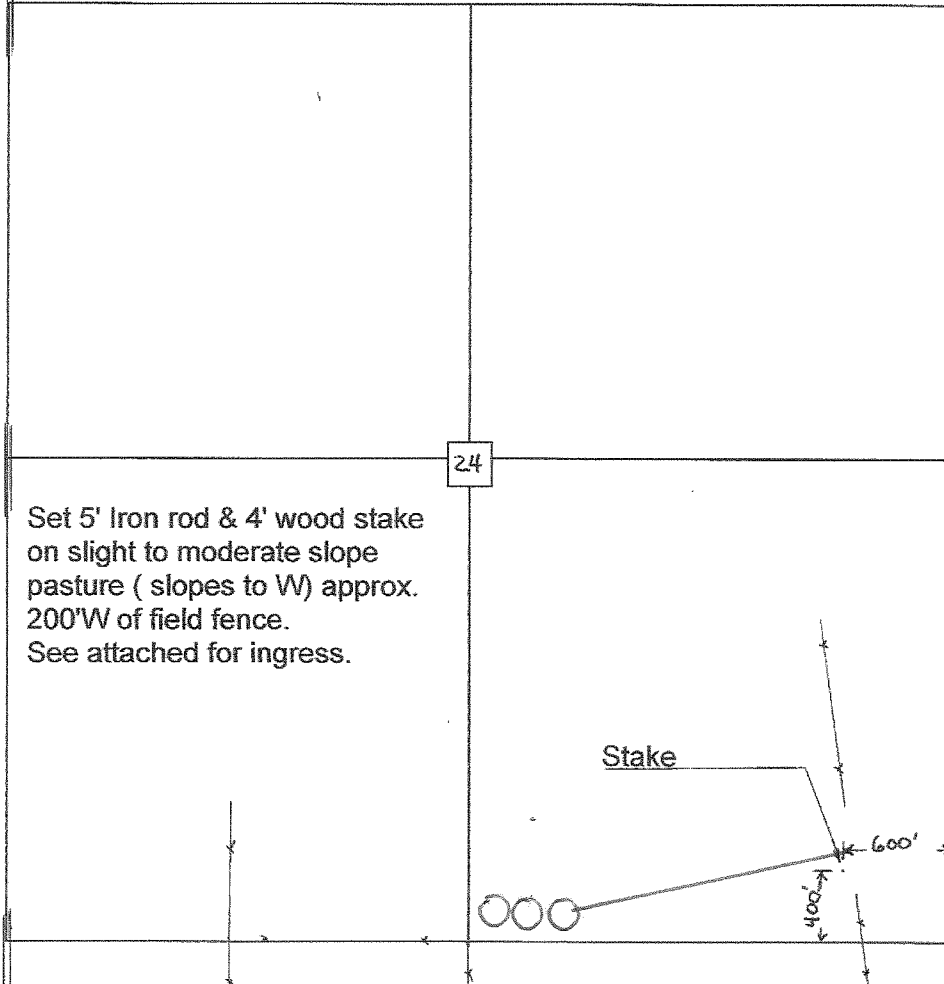
Location

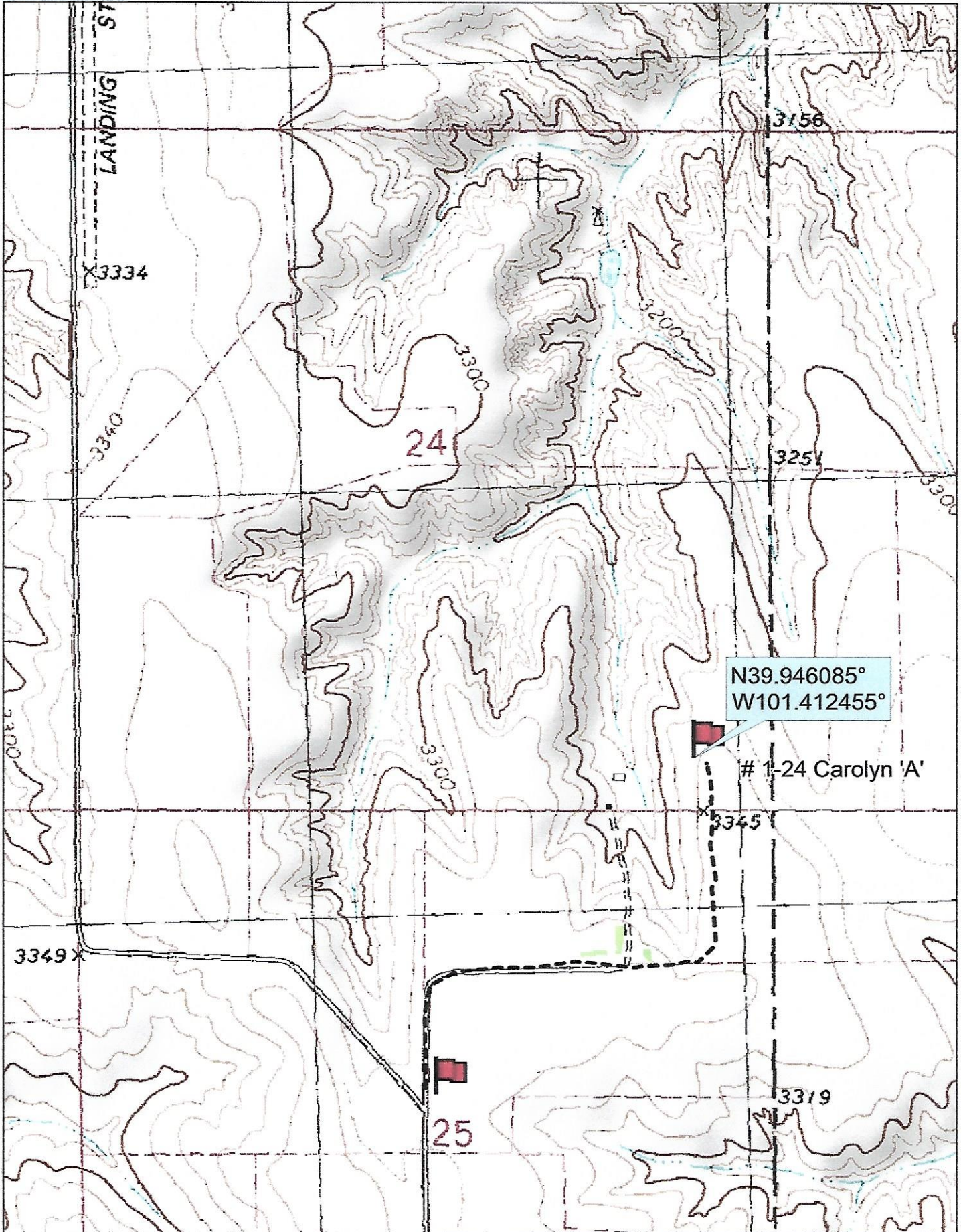
MURFIN DRILLING  
 250 N. Water  
 Suite 300  
 Wichita, KS. 67202

Elevation 3339 Gr.

Ordered By: Shauna

Scale 1"=1000'





Data use subject to license.

© DeLorme. Topo North America™ 9.

www.delorme.com

