

Geological Report

American Warrior, Inc.

Lee #2-20

1934' FNL & 1020' FEL

Sec 20, T25s, R36w

Kearny County, Kansas



American Warrior, Inc.

General Data

Well Data: American Warrior, Inc.
Lee #2-20
1934' FNL & 1020' FEL
Sec. 20, T25s, R36w
Kearny County, Kansas
API # 15-093-21953-00-00

Drilling Contractor: Duke Drilling Co. Rig #5

Geologist: Luke Thompson

Spud Date: January 31, 2017

Completion Date: February 12, 2017

Elevation 3049' G.L.
3060' K.B.

Directions: From the center of Lakin, KS at the intersection of HWY 50 & HWY 25 – Now go 6.4 miles South on HWY 25 to ingress stake W-NW into – Now go 0.7 miles W-NW on unmarked dirt road – Now go 0.2 miles NW around edge of sprinkler to ingress stake – Now go approximately 200' East, through corn stubble into staked location.

Casing: 1829' 8 5/8" #23 Surface Casing
5057' 5 1/2" #17 Production Casing

Samples: 3600' to RTD 10' Wet & Dry

Drilling Time: 3500' to RTD

Electric Logs: Pioneer Energy Services "T. Martin"
Full Sweep

Drillstem Tests: Two-Trilobite Testing "Brandon Turley"

Problems: none encountered

Formation Tops

Lee #2-20

Sec. 20, T25s, R36w

1934' FNL & 1020' FEL

Heebner	3664' -604
Toronto	3680' -620
Lansing	3706' -646
Stark	4060' -1000
Bkc	4232' -1172
Marmaton	4255' -1195
Pawnee	4350' -1290
Fort Scott	4382' -1322
Cherokee	4392' -1332
Morrow	4695' -1635
St. Gen	4852' -1792
RTD	5060' -2000
LTD	5061' -2001

Sample Zone Descriptions

Morrow (4816' -1756): Covered in DST #1

Sandstone, gray/green, fine grain, sub round, well sorted, fair to well sorted, fair cementation, glauconitic, scat fossil fragments, poor inter crystalline porosity, strong odor, fair stain, fair to good saturation, excellent show of free oil when broke, poor slow string cut. Gas 35 units hotwire.

St. Louis (4954' -1894): Covered in DST #2

Limestone, cream, oolitic packstone, chalky, poor to fair oolitic porosity, slight odor, poor stain and saturation, poor slow stream cut. Gas 60 units hotwire.

Drill Stem Tests

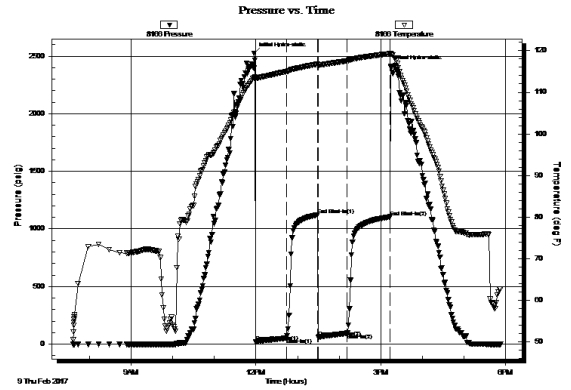
Trilobite Testing
"Brandon Turley"

DST #1 Morrow

Interval (4812' – 4853') Anchor Length 41'

IHP	- 2525 #	
IFP	- 30" – BOB 31 min	21-53#
ISI	- 45" – No Return	1123#
FFP	- 45" – BOB 10 min	61-93#
FSIP	- 60" – 2" Return dead in 45 min	1104#
FHP	- 2413 #	
BHT	- 119° F	

Recovery: 1096' GIP
 82' GO 60% O
 124' GOCWM 35% O

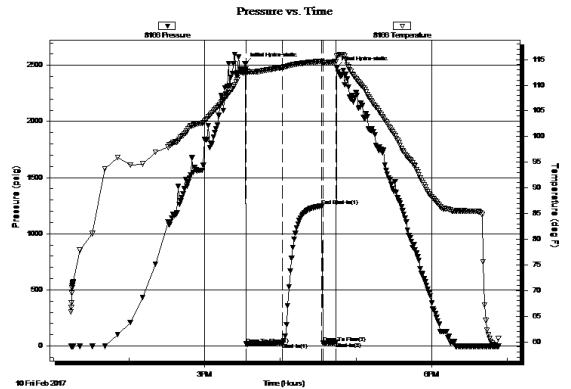


DST #2 St. Louis

Interval (4924' – 4965') Anchor Length 41'

IHP	- 2516 #	
IFP	- 30" – WSB dead in 10min	17-27#
ISI	- 30" – No Return	1247#
FFP	- 10" – BOB 8 min	29-31#
FSIP	- Pulled Test	
FHP	- 2480 #	
BHT	- 116° F	

Recovery: 10' M



Structural Comparison

	American Warrior, Inc. Lee #2-20 Sec. 20, T25s, R36w 1934' FNL & 1020' FEL		Merit Energy Corp. Lee #20-1 Sec. 20, T25s, R36w 4950' FSL & 660' FEL		McConathy Prod. Co. Lee #20-1 Sec. 20, T25s, R36w 2300' FSL & 690' FEL
Formation					
Heebner	3664' -604	-6	3656' -598	-1	3662' -603
Lansing	3706' -646	-6	3698' -640	-3	3702' -643
Stark	4060' -1000	0	4058' -1000	-1	4058' -999
BKC	4232' -1172	-6	4224' -1166	+5	4236' -1177
Marmaton	4255' -1195	-1	4252' -1194	+6	4260' -1201
Pawnee	4350' -1290	0	4348' -1290	+5	4354' -1295
Fort Scott	4382' -1322	-2	4378' -1320	+7	4388' -1329
Cherokee	4392' -1332	-2	4388' -1330	+7	4396' -1339
Morrow	4695' -1635	-3	4690' -1632	-2	4692' -1633
Miss	4852' -1792	-4	4846' -1788	+3	4854' -1795

Summary

The location for the Lee #2-20 well was found via 3-D seismic survey. The new well ran structurally as expected. Two drill stem tests were conducted, one of which recovered commercial quantities of oil. After all the gathered data had been examined, the decision was made to run 5 1/2" casing to further evaluate the Lee #2-20 well.

Perforations

Primary:	St. Louis	(4951' – 4961')
	St. Louis	(4906' – 4911')
Secondary:	Morrow	(4814' – 4820')
	Marmaton	(4285' – 4293')

Before Abandonment: Lansing H (3946' – 3950')

Respectfully Submitted,

Lukas Thompson
American Warrior, Inc.