



GEOLOGIST'S REPORT  
DRILL TIME &  
SAMPLE LOG

COMPANY: COBALT ENERGY, LLC  
LEASE: Taylor Trust 'A' #1-32  
FIELD: Wildcat

LOCATION: 557' FSL & 881' FEL  
COUNTY: Rooks STATE: KS  
CONTRACTOR: Martin Drilling Co., Rig #16  
SPUD: 01/20/17 COMP: 02/07/17  
RTD: 3350' LTD: 3349'  
MUD UP: 2300' TYPE MUD: Chemical

GL: 1757  
From: KB  
CASING  
Conductor: NA  
Surface: 8 5/8" @ 1088'  
Production: None  
Electrical Survey: None

GEOL. SUPERVISOR: Corey N. Baker  
GEOLOGIST ON WELL: Corey N. Baker  
Microlog & Sonic  
Pneum Energy Services

FORMATION TOPS  
Anhydrite: 1084 (+678)  
Base of Anhydrite: 1116 (+646)  
Topoka: 2672 (-910)  
Heebner: 2890 (-1128)  
Lansing: 2934 (-1172)  
Stark: 3130 (-1368)  
BKC: 3186 (-1424)  
Arbuckle: 3332 (-1570)  
RTD: 3350 (-1588)  
LTD: 3349 (-1587)

REMARKS: Based on the negative results of the DST's and log review, the Taylor Trust 'A' #1-32 was plugged and abandoned as a dry hole.

Respectfully Submitted,  
Corey Baker  
Vice President - Exploration  
Cobalt Energy, LLC

API #15-163-24327-00-00

LEGEND

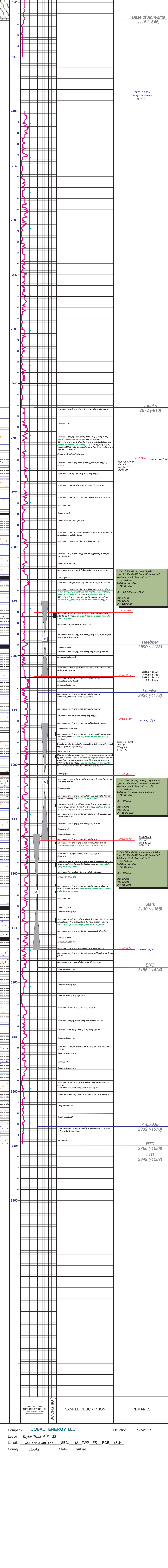
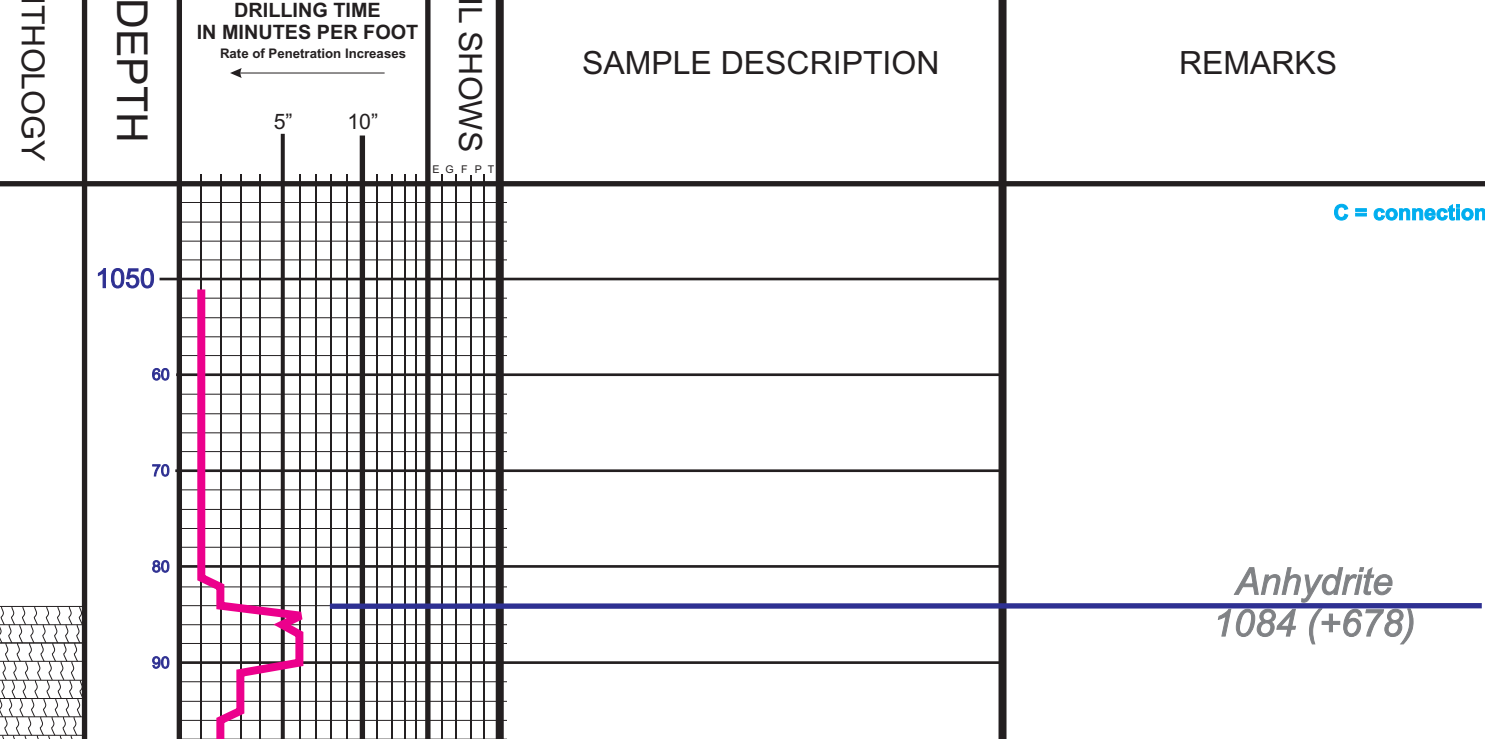


Table with columns: DEPTH, LITHOLOGY, SAMPLE DESCRIPTION, REMARKS. Contains detailed log data for various depths and lithologies.

Company: COBALT ENERGY, LLC  
Lease: Taylor Trust 'A' #1-32  
Location: 557' FSL & 881' FEL SEC. 32 TWP 7S RGE 16W  
County: Rooks State: Kansas  
Elevation: 1762' KB