



**TRILOBITE
TESTING, INC.**

DRILL STEM TEST REPORT

Becker Oil Corporation
P.O. Box 1150
Panca City, Ok 74602
ATTN: Clyde Becker

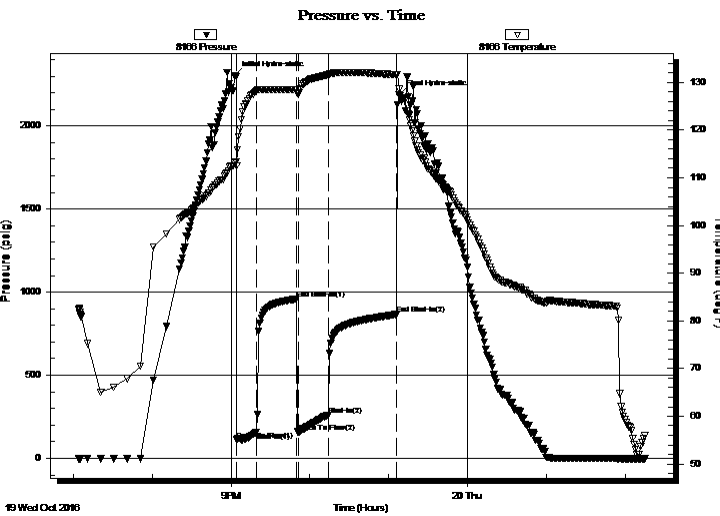
36-10-31 Thomas, Ks
Ottley #2
Job Ticket: 65626 **DST#: 4**
Test Start: 2016.10.19 @ 19:03:50

GENERAL INFORMATION:

Formation: **Cherokee**
Deviated: No Whipstock: ft (KB)
Time Tool Opened: 21:04:20
Time Test Ended: 02:15:20
Interval: **4495.00 ft (KB) To 4549.00 ft (KB) (TVD)**
Total Depth: 4540.00 ft (KB) (TVD)
Hole Diameter: 7.88 inches Hole Condition: Good
Test Type: Conventional Bottom Hole (Reset)
Tester: Brandon Turley
Unit No: 79
Reference Elevations: 2902.00 ft (KB)
2892.00 ft (CF)
KB to GR/CF: 10.00 ft

Serial #: 8166 Outside
Press @ Run Depth: 260.14 psig @ 4496.00 ft (KB) Capacity: 8000.00 psig
Start Date: 2016.10.19 End Date: 2016.10.20 Last Calib.: 2016.10.20
Start Time: 19:03:55 End Time: 02:15:19 Time On Btm: 2016.10.19 @ 21:02:50
Time Off Btm: 2016.10.19 @ 23:07:50

TEST COMMENT: IF: BOB in 2 min.
IS: BOB in 2 min.
FF: BOB in 2 min.
FS: BOB in 7 min.



PRESSURE SUMMARY

Time (Min.)	Pressure (psig)	Temp (deg F)	Annotation
0	2302.31	113.06	Initial Hydro-static
2	110.71	112.57	Open To Flow (1)
17	155.69	128.25	Shut-In(1)
47	958.40	128.43	End Shut-In(1)
49	157.61	127.52	Open To Flow (2)
71	260.14	131.58	Shut-In(2)
123	865.72	131.57	End Shut-In(2)
125	2185.95	128.57	Final Hydro-static

Recovery

Length (ft)	Description	Volume (bbl)
124.00	gocm 20%g 10%o 70%m	0.65
186.00	gocm 20%g 40%o 40%m	2.61
124.00	go 40%g 60%o	1.74
311.00	go 20%g 80%o	4.36
0.00	3037 GIP	0.00

* Recovery from multiple tests

Gas Rates

	Choke (inches)	Pressure (psig)	Gas Rate (Mcf/d)



TRILOBITE
TESTING, INC.

DRILL STEM TEST REPORT

Becker Oil Corporation

P.O. Box 1150
Panca City, Ok 74602

ATTN: Clyde Becker

36-10-31 Thomas, Ks

Ottley #2

Job Ticket: 65626

DST#: 4

Test Start: 2016.10.19 @ 19:03:50

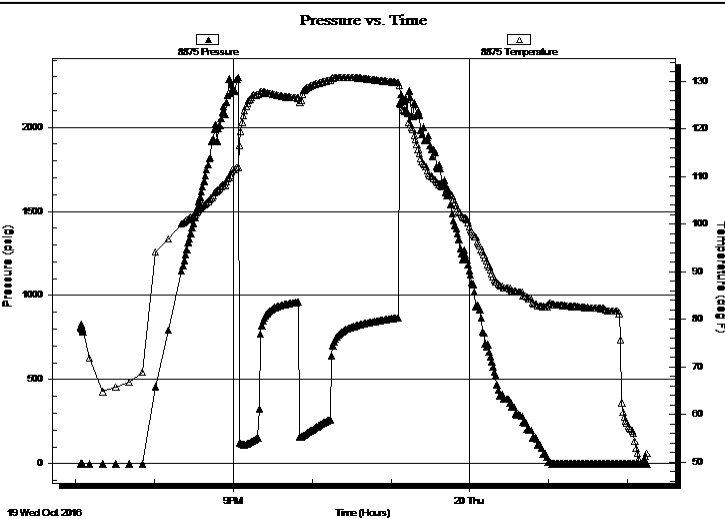
GENERAL INFORMATION:

Formation: **Cherokee**
 Deviated: No Whipstock: ft (KB)
 Time Tool Opened: 21:04:20
 Time Test Ended: 02:15:20
Interval: 4495.00 ft (KB) To 4549.00 ft (KB) (TVD)
 Total Depth: 4540.00 ft (KB) (TVD)
 Hole Diameter: 7.88 inches Hole Condition: Good
 Test Type: Conventional Bottom Hole (Reset)
 Tester: Brandon Turley
 Unit No: 79
 Reference Elevations: 2902.00 ft (KB)
 2892.00 ft (CF)
 KB to GR/CF: 10.00 ft

Serial #: 8875 Inside

Press @ Run Depth: psig @ 4496.00 ft (KB)
 Start Date: 2016.10.19 End Date: 2016.10.20
 Start Time: 19:03:45 End Time: 02:14:39
 Capacity: 8000.00 psig
 Last Calib.: 1899.12.30
 Time On Btm:
 Time Off Btm:

TEST COMMENT: IF: BOB in 2 min.
 IS: BOB in 2 min.
 FF: BOB in 2 min.
 FS: BOB in 7 min.



PRESSURE SUMMARY

Time (Min.)	Pressure (psig)	Temp (deg F)	Annotation

Recovery

Length (ft)	Description	Volume (bbl)
124.00	gocm 20%g 10%o 70% m	0.65
186.00	gocm 20%g 40%o 40% m	2.61
124.00	go 40%g 60%o	1.74
311.00	go 20%g 80%o	4.36
0.00	3037 GIP	0.00

Gas Rates

	Choke (inches)	Pressure (psig)	Gas Rate (Mcf/d)

* Recovery from multiple tests



**TRILOBITE
TESTING, INC.**

DRILL STEM TEST REPORT

FLUID SUMMARY

Becker Oil Corporation

36-10-31 Thomas, Ks

P.O. Box 1150
Panca City, Ok 74602

Ottley #2

Job Ticket: 65626

DST#: 4

ATTN: Clyde Becker

Test Start: 2016.10.19 @ 19:03:50

Mud and Cushion Information

Mud Type: Gel Chem

Cushion Type:

Oil API:

38 deg API

Mud Weight: 9.00 lb/gal

Cushion Length:

ft

Water Salinity:

0 ppm

Viscosity: 58.00 sec/qt

Cushion Volume:

bbbl

Water Loss: 7.99 in³

Gas Cushion Type:

Resistivity: 0.00 ohm.m

Gas Cushion Pressure:

psig

Salinity: 3200.00 ppm

Filter Cake: 1.00 inches

Recovery Information

Recovery Table

Length ft	Description	Volume bbl
124.00	gocm 20%g 10%o 70%m	0.646
186.00	gocm 20%g 40%o 40%m	2.609
124.00	go 40%g 60%o	1.739
311.00	go 20%g 80%o	4.363
0.00	3037 GIP	0.000

Total Length: 745.00 ft Total Volume: 9.357 bbl

Num Fluid Samples: 0

Num Gas Bombs: 0

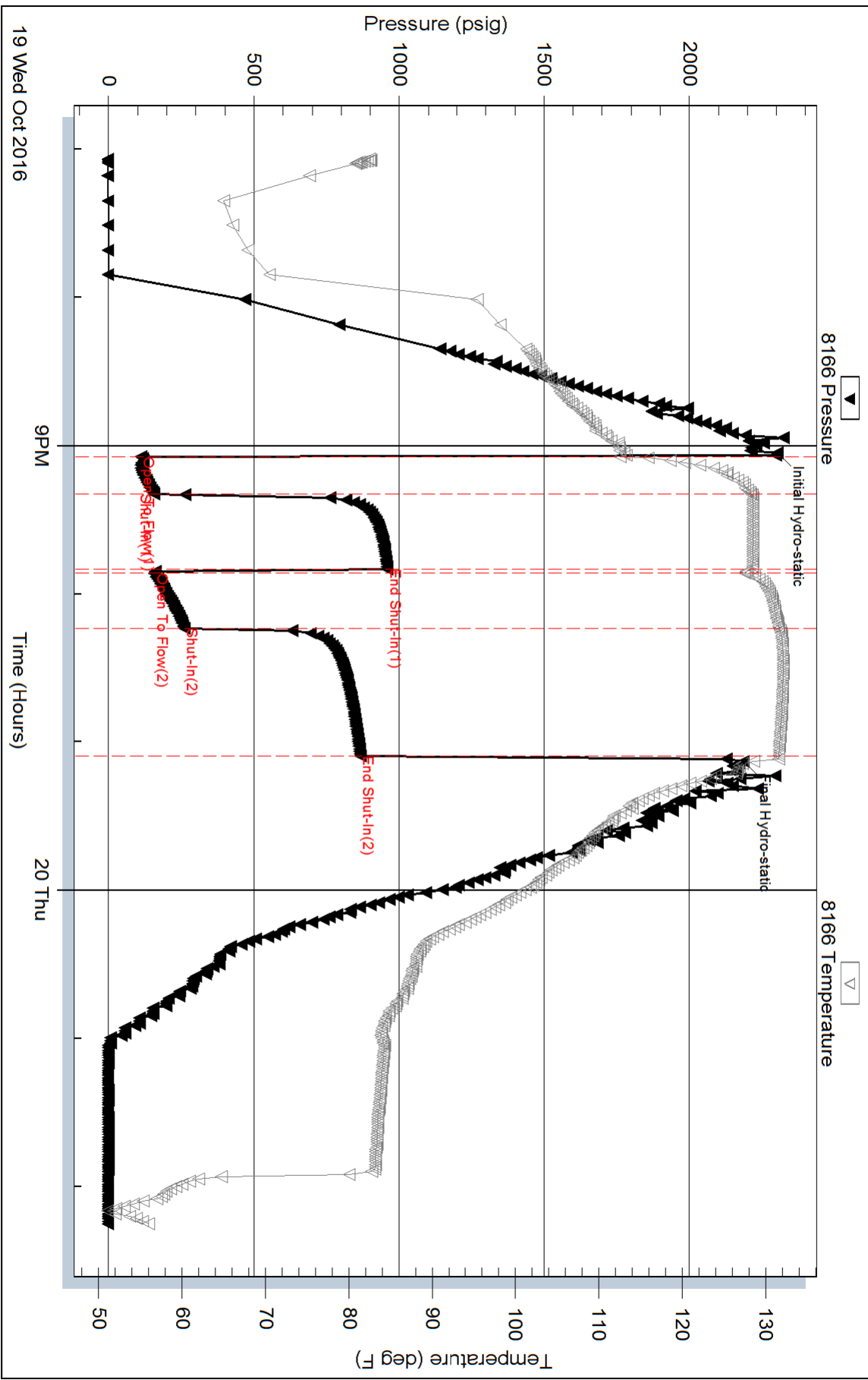
Serial #:

Laboratory Name:

Laboratory Location:

Recovery Comments: 37@50=38

Pressure vs. Time



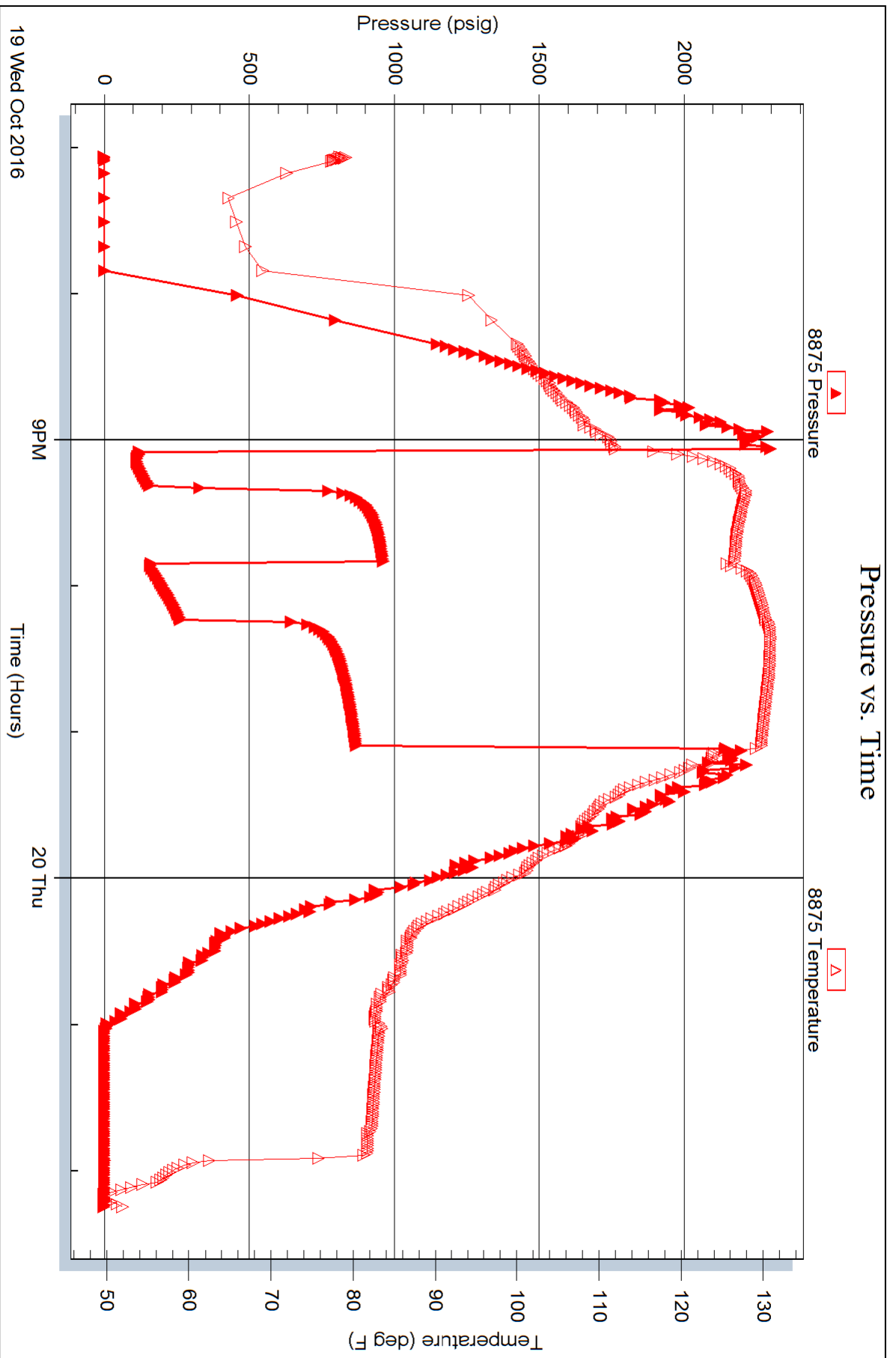
Serial #: 8875

Inside

Becker Oil Corporation

Ottley #2

DST Test Number: 4



Triobite Testing, Inc

Ref. No: 65626

Printed: 2016.10.20 @ 02:41:47