



## DRILL STEM TEST REPORT

Prepared For: **Landmark Resources, Inc.**

1616 S Voss Rd Ste 600  
Houston, TX 77057

ATTN: Terry McLeod

### **Koehn #1-9**

#### **9-16s-36w Wichita,KS**

Start Date: 2017.02.11 @ 16:45:00

End Date: 2017.02.12 @ 00:11:00

Job Ticket #: 61313                      DST #: 1

Trilobite Testing, Inc  
PO Box 362 Hays, KS 67601  
ph: 785-625-4778 fax: 785-625-5620

Printed: 2017.02.17 @ 10:22:35



**TRILOBITE TESTING, INC**

# DRILL STEM TEST REPORT

Landmark Resources, Inc.

**9-16s-36w Wichita, KS**

1616 S Voss Rd Ste 600  
Houston, TX 77057

**Koehn #1-9**

Job Ticket: 61313

**DST#: 1**

ATTN: Terry McLeod

Test Start: 2017.02.11 @ 16:45:00

## GENERAL INFORMATION:

Formation: **LKC F**

Deviated: No Whipstock: ft (KB)

Time Tool Opened: 19:02:15

Time Test Ended: 00:11:00

Test Type: Conventional Bottom Hole (Initial)

Tester: Bradley Walter

Unit No: 78

**Interval: 4137.00 ft (KB) To 4160.00 ft (KB) (TVD)**

Reference Elevations: 3292.00 ft (KB)

Total Depth: 4160.00 ft (KB) (TVD)

3281.00 ft (CF)

Hole Diameter: 7.88 inches Hole Condition: Good

KB to GR/CF: 11.00 ft

**Serial #: 8845 Outside**

Press@RunDepth: 780.07 psig @ 4138.00 ft (KB)

Capacity: 8000.00 psig

Start Date: 2017.02.11

End Date:

2017.02.12

Last Calib.: 2017.02.12

Start Time: 16:45:05

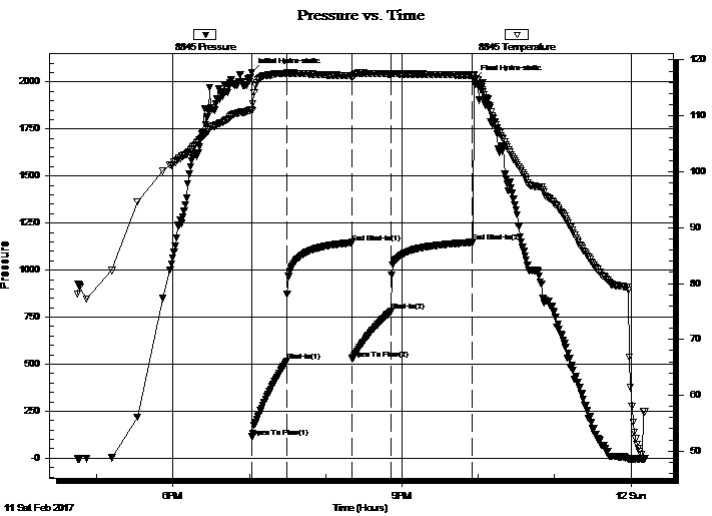
End Time:

00:10:59

Time On Btm: 2017.02.11 @ 19:01:45

Time Off Btm: 2017.02.11 @ 21:56:30

**TEST COMMENT:** IF: BOB @ 2 min.  
IS: No return.  
FF: BOB @ 3 min.  
FS: No return.



## PRESSURE SUMMARY

Time (Min.)	Pressure (psig)	Temp (deg F)	Annotation
0	2050.48	111.13	Initial Hydro-static
1	113.94	110.92	Open To Flow (1)
28	515.31	117.55	Shut-In(1)
79	1146.33	117.17	End Shut-In(1)
80	529.47	116.81	Open To Flow (2)
110	780.07	117.47	Shut-In(2)
174	1147.32	117.30	End Shut-In(2)
175	2012.38	117.42	Final Hydro-static

## Recovery

Length (ft)	Description	Volume (bbl)
1450.00	smcw 2m 98w	18.11

## Gas Rates

	Choke (inches)	Pressure (psig)	Gas Rate (Mcf/d)





**TRILOBITE  
TESTING, INC**

# DRILL STEM TEST REPORT

**TOOL DIAGRAM**

Landmark Resources, Inc.

**9-16s-36w Wichita,KS**

1616 S Voss Rd Ste 600  
Houston, TX 77057

**Koehn #1-9**

Job Ticket: 61313

**DST#: 1**

ATTN: Terry McLeod

Test Start: 2017.02.11 @ 16:45:00

## Tool Information

Drill Pipe:	Length: 3896.00 ft	Diameter: 3.80 inches	Volume: 54.65 bbl	Tool Weight:	2500.00 lb
Heavy Wt. Pipe:	Length: 0.00 ft	Diameter: 0.00 inches	Volume: 0.00 bbl	Weight set on Packer:	25000.00 lb
Drill Collar:	Length: 245.00 ft	Diameter: 2.25 inches	Volume: 1.20 bbl	Weight to Pull Loose:	78000.00 lb
			<u>Total Volume: 55.85 bbl</u>	Tool Chased	0.00 ft
Drill Pipe Above KB:	27.00 ft			String Weight: Initial	60000.00 lb
Depth to Top Packer:	4137.00 ft			Final	65000.00 lb
Depth to Bottom Packer:	ft				
Interval between Packers:	23.00 ft				
Tool Length:	46.00 ft				
Number of Packers:	2	Diameter: 6.75 inches			

Tool Comments:

## Tool Description

Tool Description	Length (ft)	Serial No.	Position	Depth (ft)	Accum. Lengths
Change Over Sub	1.00			4115.00	
Shut In Tool	5.00			4120.00	
Hydraulic tool	5.00			4125.00	
Safety Joint	2.00			4127.00	
Change Over Sub	1.00			4128.00	
Packer	5.00			4133.00	23.00 Bottom Of Top Packer
Packer	4.00			4137.00	
Stubb	1.00			4138.00	
Recorder	0.00	8365	Inside	4138.00	
Recorder	0.00	8845	Outside	4138.00	
Perforations	19.00			4157.00	
Bullnose	3.00			4160.00	23.00 Bottom Packers & Anchor

**Total Tool Length: 46.00**



**TRILOBITE  
TESTING, INC**

# DRILL STEM TEST REPORT

## FLUID SUMMARY

Landmark Resources, Inc.

**9-16s-36w Wichita,KS**

1616 S Voss Rd Ste 600  
Houston, TX 77057

**Koehn #1-9**

Job Ticket: 61313

**DST#: 1**

ATTN: Terry McLeod

Test Start: 2017.02.11 @ 16:45:00

### Mud and Cushion Information

Mud Type: Gel Chem

Cushion Type:

Oil API:

0 deg API

Mud Weight: 9.00 lb/gal

Cushion Length:

ft

Water Salinity:

61000 ppm

Viscosity: 55.00 sec/qt

Cushion Volume:

bbbl

Water Loss: 7.20 in<sup>3</sup>

Gas Cushion Type:

Resistivity: ohm.m

Gas Cushion Pressure:

psig

Salinity: 4000.00 ppm

Filter Cake: 1.00 inches

### Recovery Information

Recovery Table

Length ft	Description	Volume bbl
1450.00	smcw 2m 98w	18.108

Total Length: 1450.00 ft      Total Volume: 18.108 bbl

Num Fluid Samples: 0

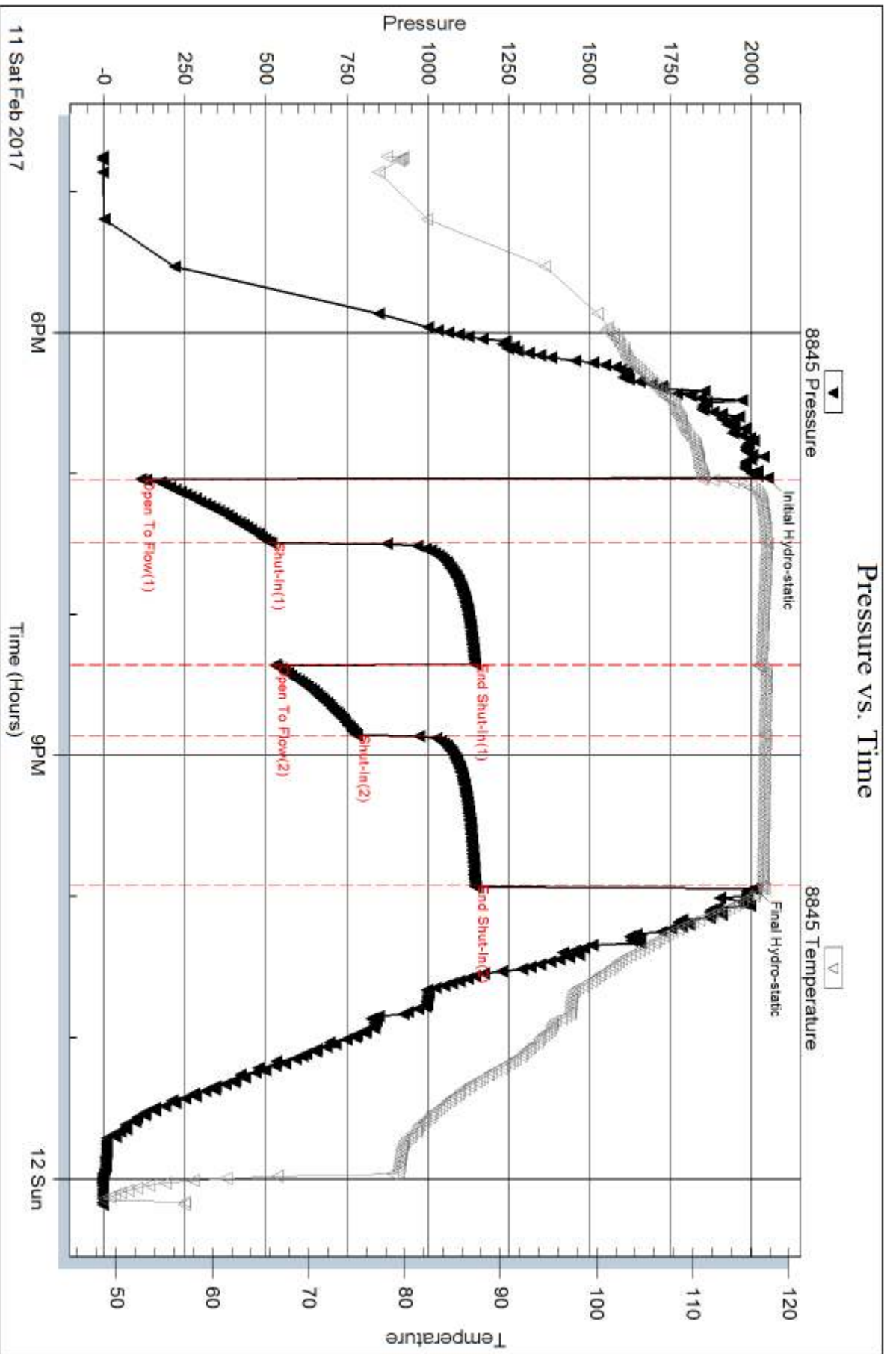
Num Gas Bombs: 0

Serial #:

Laboratory Name:

Laboratory Location:

Recovery Comments: rw is .172 @ 49 F = 61000ppm



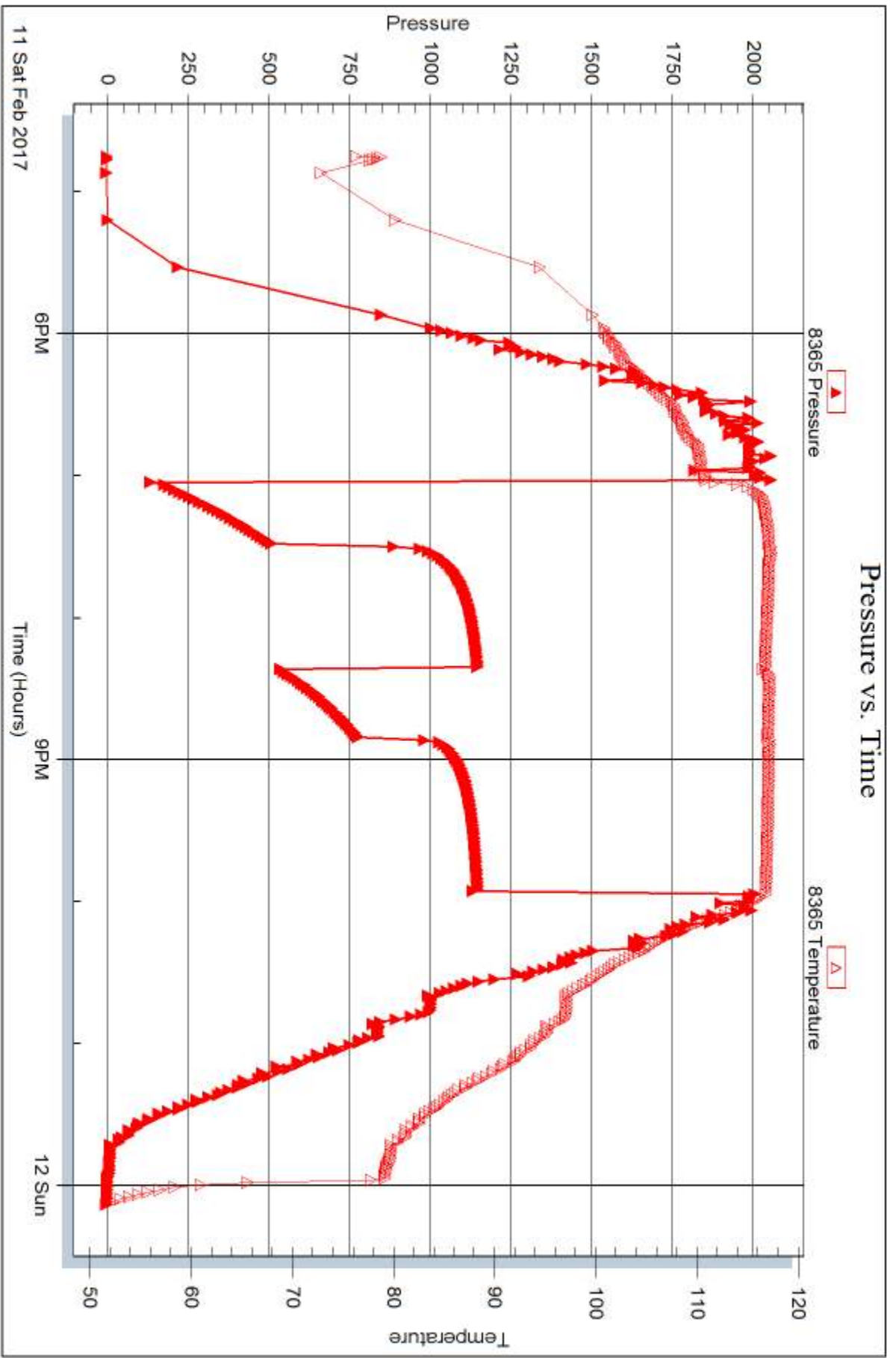
Serial #: 8365

Inside

Landmark Resources, Inc.

Koehn #1-9

DST Test Number: 1



Trilobite Testing, Inc

Ref. No: 61313

Printed: 2017.02.17 @ 10:22:36



## DRILL STEM TEST REPORT

Prepared For: **Landmark Resources, Inc.**

1616 S Voss Rd Ste 600  
Houston, TX 77057

ATTN: Terry McLeod

### **Koehn #1-9**

#### **9-16s-36w Wichita,KS**

Start Date: 2017.02.12 @ 11:27:00

End Date: 2017.02.14 @ 05:15:45

Job Ticket #: 61314                      DST #: 2

Trilobite Testing, Inc  
PO Box 362 Hays, KS 67601  
ph: 785-625-4778 fax: 785-625-5620

Printed: 2017.02.17 @ 11:26:54





**TRILOBITE TESTING, INC**

# DRILL STEM TEST REPORT

Landmark Resources, Inc.

**9-16s-36w Wichita,KS**

1616 S Voss Rd Ste 600  
Houston, TX 77057

**Koehn #1-9**

Job Ticket: 61314

**DST#: 2**

ATTN: Terry McLeod

Test Start: 2017.02.12 @ 11:27:00

## GENERAL INFORMATION:

Formation: **LKC H**

Deviated: No Whipstock: ft (KB)

Time Tool Opened: 13:33:00

Time Test Ended: 05:15:45

Test Type: Conventional Bottom Hole (Reset)

Tester: Bradley Walter

Unit No: 78

**Interval: 4201.00 ft (KB) To 42501.0 ft (KB) (TVD)**

Reference Elevations: 3292.00 ft (KB)

Total Depth: 4250.00 ft (KB) (TVD)

3281.00 ft (CF)

Hole Diameter: 7.88 inches Hole Condition: Good

KB to GR/CF: 11.00 ft

**Serial #: 8845 Outside**

Press@RunDepth: 171.18 psig @ 4202.00 ft (KB)

Capacity: 8000.00 psig

Start Date: 2017.02.12

End Date:

2017.02.14

Last Calib.: 2017.02.14

Start Time: 11:27:05

End Time:

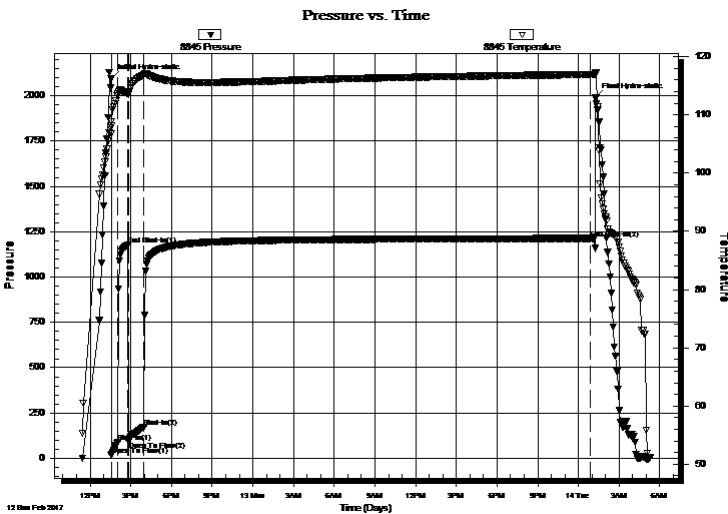
05:15:45

Time On Btm: 2017.02.12 @ 13:32:45

Time Off Btm: 2017.02.14 @ 01:16:00

**TEST COMMENT:** IF: 3" blow,  
IS: No return.  
FF: 2 1/2" blow.  
FS: No return. string w as stuck in hole.

## PRESSURE SUMMARY



Time (Min.)	Pressure (psig)	Temp (deg F)	Annotation
0	2095.52	108.08	Initial Hydro-static
1	16.11	106.78	Open To Flow (1)
31	89.27	113.65	Shut-In(1)
75	1177.15	113.67	End Shut-In(1)
76	94.71	113.48	Open To Flow (2)
147	171.18	116.88	Shut-In(2)
2121	1212.57	116.91	End Shut-In(2)
2144	1989.56	117.28	Final Hydro-static

## Recovery

Length (ft)	Description	Volume (bbl)
120.00	socm 2o 98m	0.59
0.00	oil spots in tool.	0.00

\* Recovery from multiple tests

## Gas Rates

	Choke (inches)	Pressure (psig)	Gas Rate (Mcf/d)





**TRILOBITE  
TESTING, INC**

# DRILL STEM TEST REPORT

**TOOL DIAGRAM**

Landmark Resources, Inc.

**9-16s-36w Wichita,KS**

1616 S Voss Rd Ste 600  
Houston, TX 77057

**Koehn #1-9**

Job Ticket: 61314

**DST#: 2**

ATTN: Terry McLeod

Test Start: 2017.02.12 @ 11:27:00

## Tool Information

Drill Pipe:	Length: 3958.00 ft	Diameter: 3.80 inches	Volume: 55.52 bbl	Tool Weight: 2500.00 lb
Heavy Wt. Pipe:	Length: 0.00 ft	Diameter: 0.00 inches	Volume: 0.00 bbl	Weight set on Packer: 2500.00 lb
Drill Collar:	Length: 245.00 ft	Diameter: 2.25 inches	Volume: 1.20 bbl	Weight to Pull Loose: 200000.0 lb
			<u>Total Volume: 56.72 bbl</u>	Tool Chased 0.00 ft
Drill Pipe Above KB:	25.00 ft			String Weight: Initial 60000.00 lb
Depth to Top Packer:	4201.00 ft			Final 60000.00 lb
Depth to Bottom Packer:	ft			
Interval between Packers:	49.00 ft			
Tool Length:	72.00 ft			
Number of Packers:	2	Diameter: 6.75 inches		

Tool Comments:

## Tool Description

Tool Description	Length (ft)	Serial No.	Position	Depth (ft)	Accum. Lengths
Change Over Sub	1.00			4179.00	
Shut In Tool	5.00			4184.00	
Hydraulic tool	5.00			4189.00	
Safety Joint	2.00			4191.00	
Change Over Sub	1.00			4192.00	
Packer	5.00			4197.00	23.00 Bottom Of Top Packer
Packer	4.00			4201.00	
Stubb	1.00			4202.00	
Recorder	0.00	8365	Inside	4202.00	
Recorder	0.00	8845	Outside	4202.00	
Perforations	12.00			4214.00	
Change Over Sub	1.00			4215.00	
Drill Pipe	31.00			4246.00	
Change Over Sub	1.00			4247.00	
Bullnose	3.00			4250.00	49.00 Bottom Packers & Anchor

**Total Tool Length: 72.00**



**TRILOBITE  
TESTING, INC**

# DRILL STEM TEST REPORT

## FLUID SUMMARY

Landmark Resources, Inc.

**9-16s-36w Wichita,KS**

1616 S Voss Rd Ste 600  
Houston, TX 77057

**Koehn #1-9**

Job Ticket: 61314

**DST#: 2**

ATTN: Terry McLeod

Test Start: 2017.02.12 @ 11:27:00

### Mud and Cushion Information

Mud Type: Gel Chem

Cushion Type:

Oil API:

0 deg API

Mud Weight: 9.00 lb/gal

Cushion Length:

ft

Water Salinity:

0 ppm

Viscosity: 55.00 sec/qt

Cushion Volume:

bbbl

Water Loss: 7.99 in<sup>3</sup>

Gas Cushion Type:

Resistivity: ohm.m

Gas Cushion Pressure:

psig

Salinity: 4500.00 ppm

Filter Cake: 1.00 inches

### Recovery Information

Recovery Table

Length ft	Description	Volume bbl
120.00	socm 2o 98m	0.590
0.00	oil spots in tool.	0.000

Total Length: 120.00 ft      Total Volume: 0.590 bbl

Num Fluid Samples: 0

Num Gas Bombs: 0

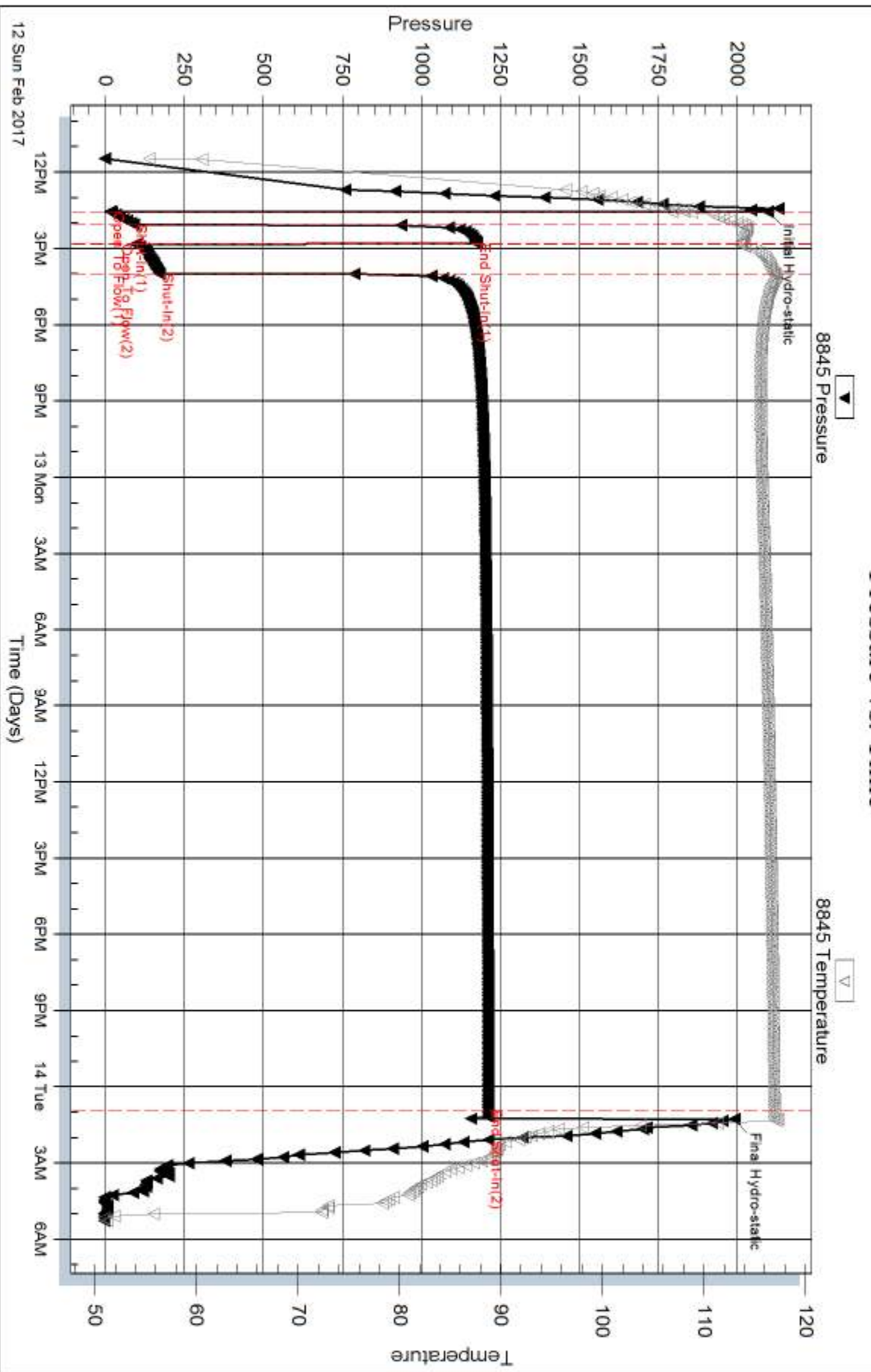
Serial #:

Laboratory Name:

Laboratory Location:

Recovery Comments: string got stuck above tool, circulated through circ sub to spot oil. samples were very thick

### Pressure vs. Time



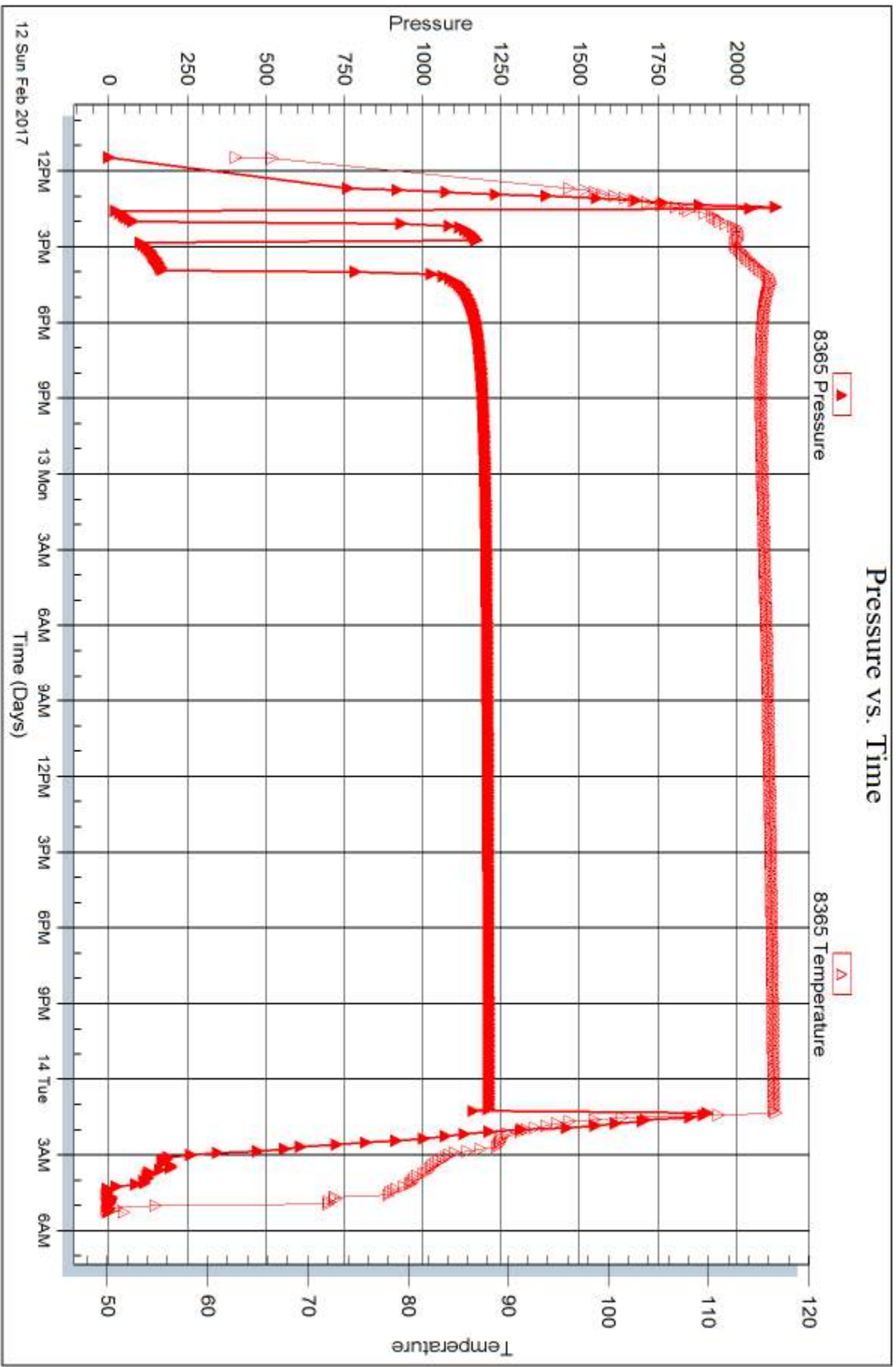
Serial #: 8365

Inside

Landmark Resources, Inc.

Koehn #1-9

DST Test Number: 2



Trilobite Testing, Inc

Ref. No: 61314

Printed: 2017.02.17 @ 11:26:55



## DRILL STEM TEST REPORT

Prepared For: **Landmark Resources, Inc.**

1616 S Voss Rd Ste 600  
Houston, TX 77057

ATTN: Terry McLeod

### **Koehn #1-9**

#### **9-16s-36w Wichita,KS**

Start Date: 2017.02.15 @ 09:30:00

End Date: 2017.02.15 @ 16:33:45

Job Ticket #: 61315                      DST #: 3

Trilobite Testing, Inc

PO Box 362 Hays, KS 67601

ph: 785-625-4778 fax: 785-625-5620

Printed: 2017.02.17 @ 11:24:58



**TRILOBITE TESTING, INC**

# DRILL STEM TEST REPORT

Landmark Resources, Inc.

**9-16s-36w Wichita, KS**

1616 S Voss Rd Ste 600  
Houston, TX 77057

**Koehn #1-9**

Job Ticket: 61315

**DST#: 3**

ATTN: Terry McLeod

Test Start: 2017.02.15 @ 09:30:00

## GENERAL INFORMATION:

Formation: **Marmaton**

Deviated: No Whipstock: ft (KB)

Time Tool Opened: 11:51:00

Time Test Ended: 16:33:45

Test Type: Conventional Bottom Hole (Reset)

Tester: Bradley Walter

Unit No: 78

**Interval: 4443.00 ft (KB) To 4490.00 ft (KB) (TVD)**

Reference Elevations: 3292.00 ft (KB)

Total Depth: 4490.00 ft (KB) (TVD)

3281.00 ft (CF)

Hole Diameter: 7.88 inches Hole Condition: Good

KB to GR/CF: 11.00 ft

**Serial #: 8845 Outside**

Press@RunDepth: 190.37 psig @ 4444.00 ft (KB)

Capacity: 8000.00 psig

Start Date: 2017.02.15

End Date: 2017.02.15

Last Calib.: 2017.02.15

Start Time: 09:30:05

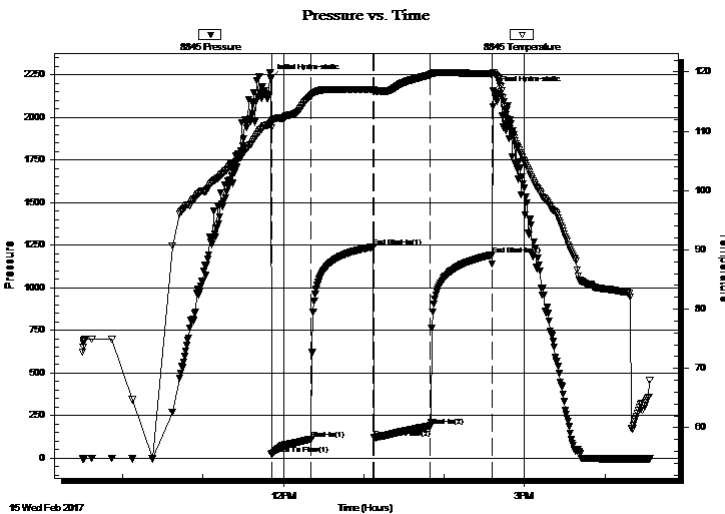
End Time: 16:33:44

Time On Btm: 2017.02.15 @ 11:50:45

Time Off Btm: 2017.02.15 @ 14:36:45

**TEST COMMENT:** IF: 8" blow.  
IS: No return  
FF: 8" blow.  
FS: No return.

## PRESSURE SUMMARY



Time (Min.)	Pressure (psig)	Temp (deg F)	Annotation
0	2224.99	111.39	Initial Hydro-static
1	21.44	110.62	Open To Flow (1)
30	112.09	115.96	Shut-In(1)
77	1240.12	117.04	End Shut-In(1)
77	119.51	116.78	Open To Flow (2)
119	190.37	119.50	Shut-In(2)
165	1192.83	119.66	End Shut-In(2)
166	2155.15	119.93	Final Hydro-static

## Recovery

Length (ft)	Description	Volume (bbl)
300.00	somcw 3o 10m 87w	3.09
60.00	gocm 10g 30o 60m	0.84
110.00	gmco 10g 20m 70o	1.54

\* Recovery from multiple tests

## Gas Rates

	Choke (inches)	Pressure (psig)	Gas Rate (Mcf/d)







**TRILOBITE  
TESTING, INC**

# DRILL STEM TEST REPORT

**TOOL DIAGRAM**

Landmark Resources, Inc.

**9-16s-36w Wichita,KS**

1616 S Voss Rd Ste 600  
Houston, TX 77057

**Koehn #1-9**

Job Ticket: 61315

**DST#: 3**

ATTN: Terry McLeod

Test Start: 2017.02.15 @ 09:30:00

## Tool Information

Drill Pipe:	Length: 4310.00 ft	Diameter: 3.80 inches	Volume: 60.46 bbl	Tool Weight: 2500.00 lb
Heavy Wt. Pipe:	Length: 0.00 ft	Diameter: 0.00 inches	Volume: 0.00 bbl	Weight set on Packer: 20000.00 lb
Drill Collar:	Length: 123.00 ft	Diameter: 2.25 inches	Volume: 0.60 bbl	Weight to Pull Loose: 70000.00 lb
			<u>Total Volume: 61.06 bbl</u>	Tool Chased 0.00 ft
Drill Pipe Above KB:	13.00 ft			String Weight: Initial 58000.00 lb
Depth to Top Packer:	4443.00 ft			Final 59000.00 lb
Depth to Bottom Packer:	ft			
Interval between Packers:	47.00 ft			
Tool Length:	70.00 ft			
Number of Packers:	2	Diameter: 6.75 inches		

Tool Comments:

## Tool Description

**Length (ft) Serial No. Position Depth (ft) Accum. Lengths**

Tool Description	Length (ft)	Serial No.	Position	Depth (ft)	Accum. Lengths
Change Over Sub	1.00			4421.00	
Shut In Tool	5.00			4426.00	
Hydraulic tool	5.00			4431.00	
Safety Joint	2.00			4433.00	
Change Over Sub	1.00			4434.00	
Packer	5.00			4439.00	23.00 Bottom Of Top Packer
Packer	4.00			4443.00	
Stubb	1.00			4444.00	
Recorder	0.00	8365	Inside	4444.00	
Recorder	0.00	8845	Outside	4444.00	
Perforations	10.00			4454.00	
Change Over Sub	1.00			4455.00	
Drill Pipe	31.00			4486.00	
Change Over Sub	1.00			4487.00	
Bullnose	3.00			4490.00	47.00 Bottom Packers & Anchor

**Total Tool Length: 70.00**



**TRILOBITE  
TESTING, INC**

# DRILL STEM TEST REPORT

**FLUID SUMMARY**

Landmark Resources, Inc.

**9-16s-36w Wichita,KS**

1616 S Voss Rd Ste 600  
Houston, TX 77057

**Koehn #1-9**

Job Ticket: 61315

**DST#: 3**

ATTN: Terry McLeod

Test Start: 2017.02.15 @ 09:30:00

## Mud and Cushion Information

Mud Type: Gel Chem

Cushion Type:

Oil API:

0 deg API

Mud Weight: 9.00 lb/gal

Cushion Length:

ft

Water Salinity:

37000 ppm

Viscosity: 56.00 sec/qt

Cushion Volume:

bbbl

Water Loss: 7.19 in<sup>3</sup>

Gas Cushion Type:

Resistivity: ohm.m

Gas Cushion Pressure:

psig

Salinity: 7500.00 ppm

Filter Cake: 1.00 inches

## Recovery Information

Recovery Table

Length ft	Description	Volume bbbl
300.00	somcw 3o 10m 87w	3.088
60.00	gocm 10g 30o 60m	0.842
110.00	gmco 10g 20m 70o	1.543

Total Length: 470.00 ft      Total Volume: 5.473 bbl

Num Fluid Samples: 0

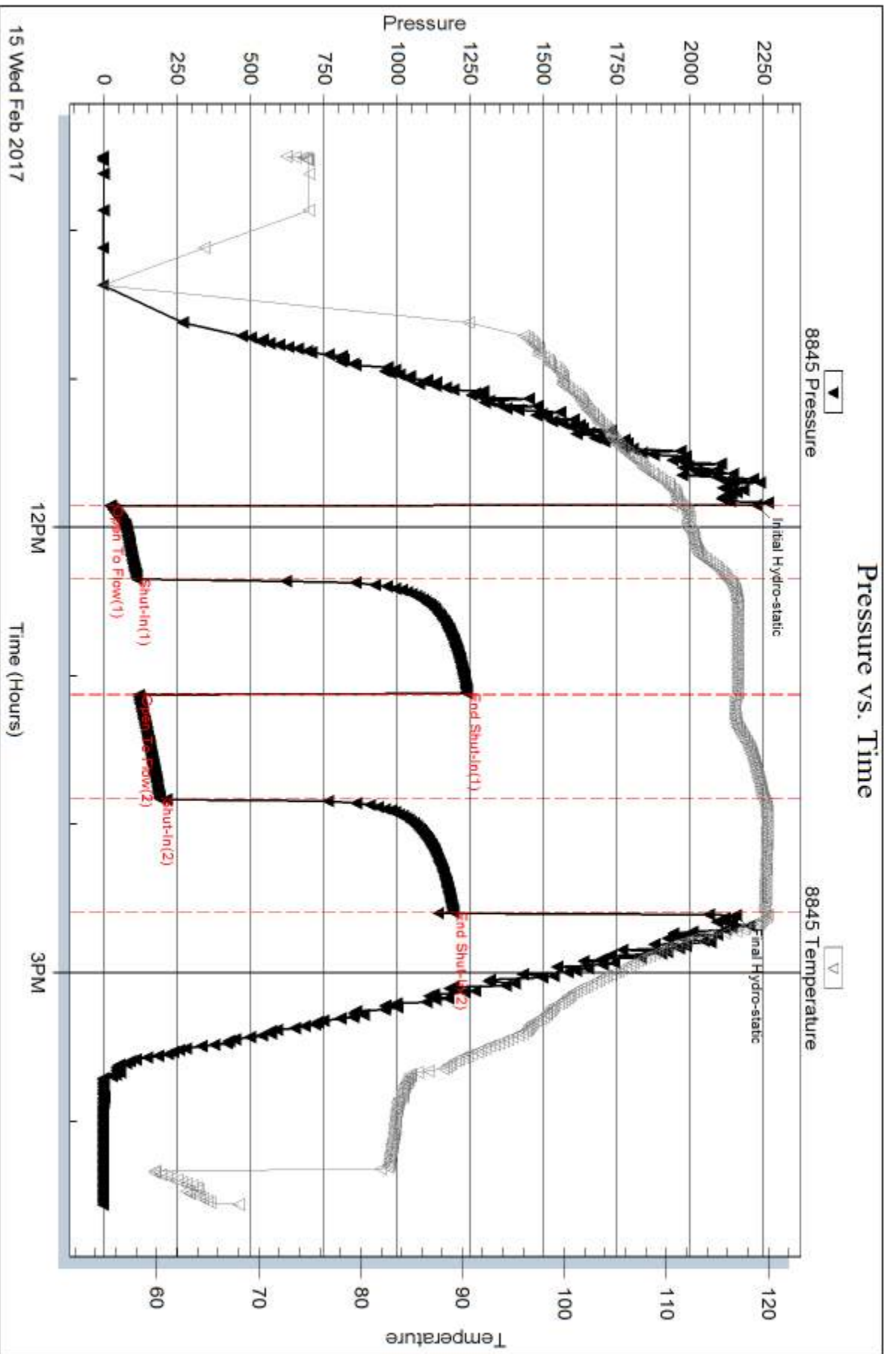
Num Gas Bombs: 0

Serial #:

Laboratory Name:

Laboratory Location:

Recovery Comments: rw is .239 @ 62 F = 37000ppm



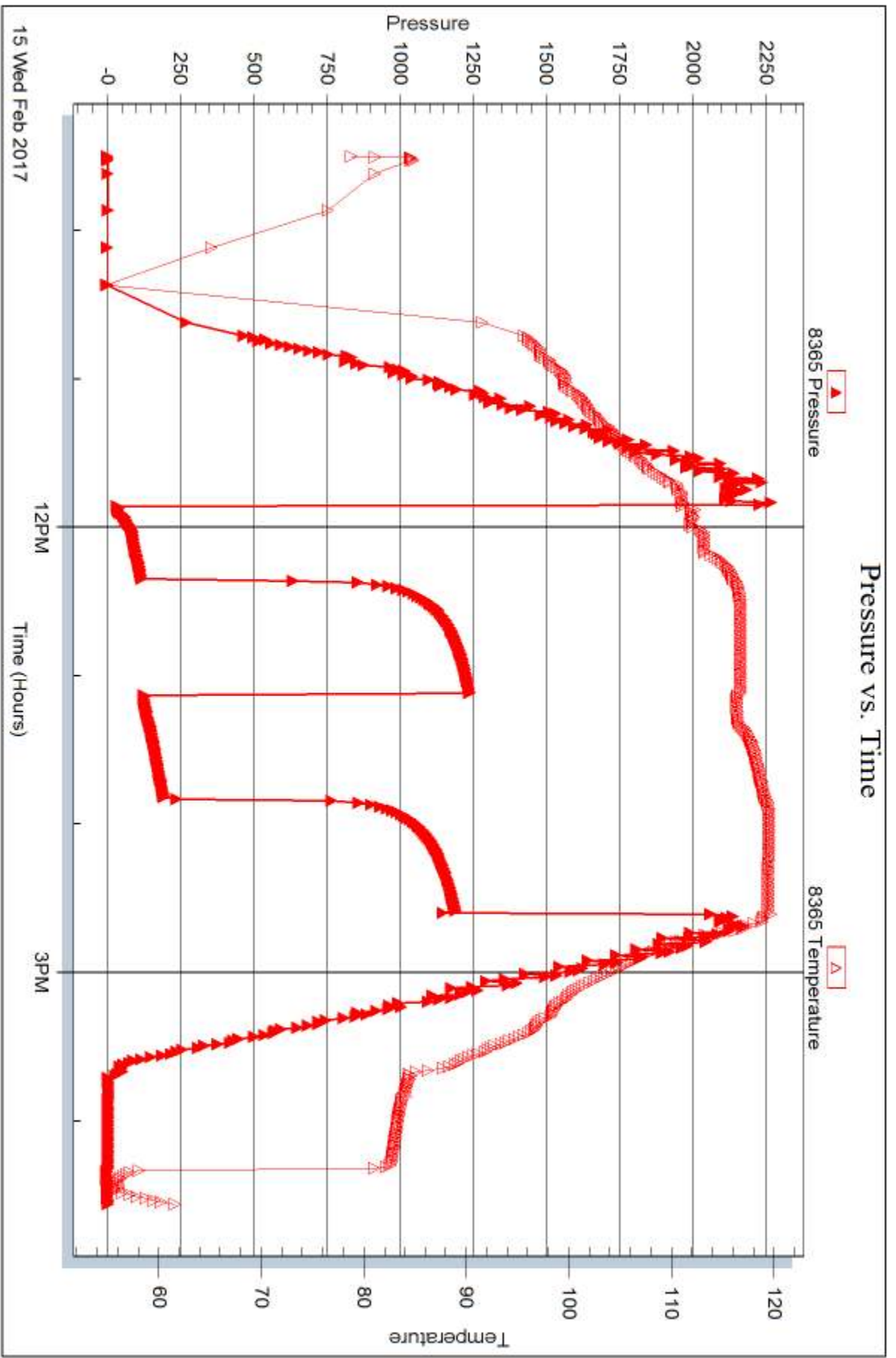
Serial #: 8365

Inside

Landmark Resources, Inc.

Koehn #1-9

DST Test Number: 3



15 Wed Feb 2017

12PM

Time (Hours)

3PM

Trilobite Testing, Inc

Ref. No: 61315

Printed: 2017.02.17 @ 11:24:59



## DRILL STEM TEST REPORT

Prepared For: **Landmark Resources, Inc.**

1616 S Voss Rd Ste 600  
Houston, TX 77057

ATTN: Terry McLeod

### **Koehn #1-9**

#### **9-16s-36w Wichita,KS**

Start Date: 2017.02.16 @ 05:31:00

End Date: 2017.02.16 @ 12:30:00

Job Ticket #: 61316                      DST #: 4

Trilobite Testing, Inc  
PO Box 362 Hays, KS 67601  
ph: 785-625-4778 fax: 785-625-5620

Printed: 2017.02.17 @ 11:24:28



**TRILOBITE TESTING, INC**

# DRILL STEM TEST REPORT

Landmark Resources, Inc.

**9-16s-36w Wichita, KS**

1616 S Voss Rd Ste 600  
Houston, TX 77057

**Koehn #1-9**

Job Ticket: 61316

**DST#: 4**

ATTN: Terry McLeod

Test Start: 2017.02.16 @ 05:31:00

## GENERAL INFORMATION:

Formation: **Myric Station - Ft.**

Deviated: No Whipstock: ft (KB)

Time Tool Opened: 08:40:30

Time Test Ended: 12:30:00

Test Type: Conventional Bottom Hole (Reset)

Tester: Bradley Walter

Unit No: 78

**Interval: 4541.00 ft (KB) To 4600.00 ft (KB) (TVD)**

Reference Elevations: 3292.00 ft (KB)

Total Depth: 4600.00 ft (KB) (TVD)

3281.00 ft (CF)

Hole Diameter: 7.88 inches Hole Condition: Good

KB to GR/CF: 11.00 ft

**Serial #: 8845 Outside**

Press@RunDepth: 24.63 psig @ 4542.00 ft (KB)

Capacity: 8000.00 psig

Start Date: 2017.02.16

End Date:

2017.02.16

Last Calib.:

2017.02.16

Start Time: 05:31:05

End Time:

12:29:59

Time On Btm:

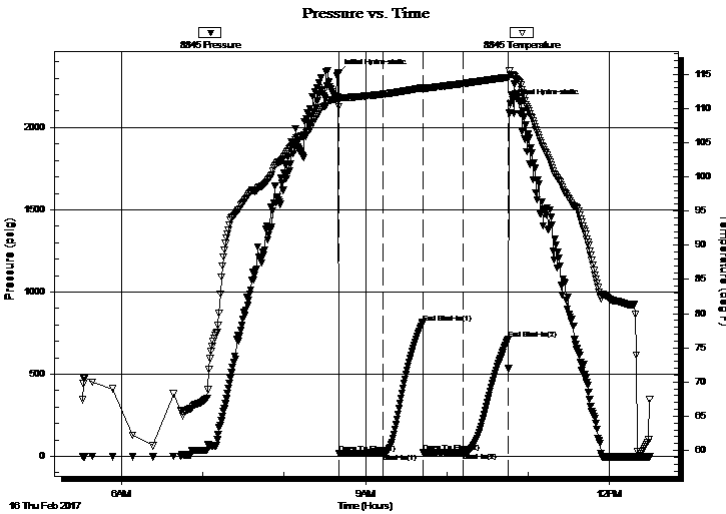
2017.02.16 @ 08:40:00

Time Off Btm:

2017.02.16 @ 10:47:15

**TEST COMMENT:** IF: 1/2" blow , receded to weak surface blow .  
IS: No return.  
FF: No blow .  
FS: No return.

## PRESSURE SUMMARY



Time (Min.)	Pressure (psig)	Temp (deg F)	Annotation
0	2328.89	111.75	Initial Hydro-static
1	17.76	110.29	Open To Flow (1)
34	21.04	112.11	Shut-In(1)
63	812.79	113.03	End Shut-In(1)
63	22.67	112.81	Open To Flow (2)
93	24.63	113.67	Shut-In(2)
126	714.55	114.57	End Shut-In(2)
128	2146.76	115.01	Final Hydro-static

## Recovery

Length (ft)	Description	Volume (bbl)
15.00	mud 100m oil spots	0.07

## Gas Rates

Choke (inches)	Pressure (psig)	Gas Rate (Mcf/d)

\* Recovery from multiple tests







**TRILOBITE  
TESTING, INC**

# DRILL STEM TEST REPORT

**TOOL DIAGRAM**

Landmark Resources, Inc.

**9-16s-36w Wichita,KS**

1616 S Voss Rd Ste 600  
Houston, TX 77057

**Koehn #1-9**

Job Ticket: 61316

**DST#: 4**

ATTN: Terry McLeod

Test Start: 2017.02.16 @ 05:31:00

## Tool Information

Drill Pipe:	Length: 4395.00 ft	Diameter: 3.80 inches	Volume: 61.65 bbl	Tool Weight: 2500.00 lb
Heavy Wt. Pipe:	Length: 0.00 ft	Diameter: 0.00 inches	Volume: 0.00 bbl	Weight set on Packer: 20000.00 lb
Drill Collar:	Length: 123.00 ft	Diameter: 2.25 inches	Volume: 0.60 bbl	Weight to Pull Loose: 70000.00 lb
			<u>Total Volume: 62.25 bbl</u>	Tool Chased 0.00 ft
Drill Pipe Above KB:	6.00 ft			String Weight: Initial 59000.00 lb
Depth to Top Packer:	4541.00 ft			Final 59000.00 lb
Depth to Bottom Packer:	ft			
Interval between Packers:	59.00 ft			
Tool Length:	88.00 ft			
Number of Packers:	2	Diameter: 6.75 inches		

Tool Comments:

## Tool Description

Tool Description	Length (ft)	Serial No.	Position	Depth (ft)	Accum. Lengths
Change Over Sub	1.00			4513.00	
Shut In Tool	5.00			4518.00	
Hydraulic tool	5.00			4523.00	
Jars	5.00			4528.00	
Safety Joint	2.00			4530.00	
Change Over Sub	1.00			4531.00	
Change Over Sub	1.00			4532.00	
Packer	5.00			4537.00	29.00 Bottom Of Top Packer
Packer	4.00			4541.00	
Stubb	1.00			4542.00	
Recorder	0.00	8365	Inside	4542.00	
Recorder	0.00	8845	Outside	4542.00	
Perforations	22.00			4564.00	
Change Over Sub	1.00			4565.00	
Drill Pipe	31.00			4596.00	
Change Over Sub	1.00			4597.00	
Bullnose	3.00			4600.00	59.00 Bottom Packers & Anchor
<b>Total Tool Length:</b>	<b>88.00</b>				



**TRILOBITE  
TESTING, INC**

# DRILL STEM TEST REPORT

## FLUID SUMMARY

Landmark Resources, Inc.

**9-16s-36w Wichita,KS**

1616 S Voss Rd Ste 600  
Houston, TX 77057

**Koehn #1-9**

Job Ticket: 61316

**DST#: 4**

ATTN: Terry McLeod

Test Start: 2017.02.16 @ 05:31:00

### Mud and Cushion Information

Mud Type: Gel Chem

Cushion Type:

Oil API:

0 deg API

Mud Weight: 9.00 lb/gal

Cushion Length:

ft

Water Salinity:

0 ppm

Viscosity: 60.00 sec/qt

Cushion Volume:

bbbl

Water Loss: 8.79 in<sup>3</sup>

Gas Cushion Type:

Resistivity: ohm.m

Gas Cushion Pressure:

psig

Salinity: 8000.00 ppm

Filter Cake: 2.00 inches

### Recovery Information

Recovery Table

Length ft	Description	Volume bbl
15.00	mud 100m oil spots	0.074

Total Length: 15.00 ft      Total Volume: 0.074 bbl

Num Fluid Samples: 0

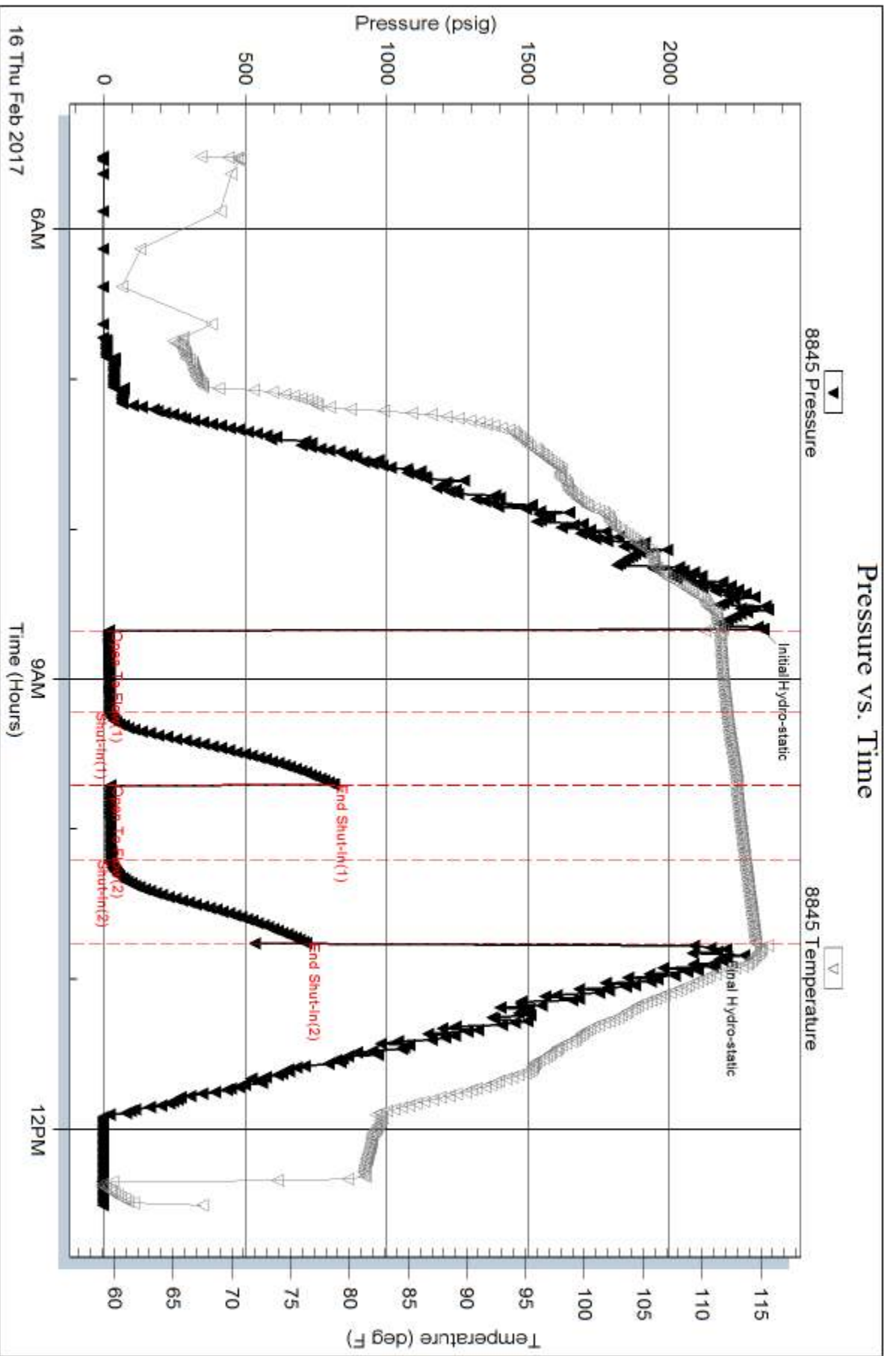
Num Gas Bombs: 0

Serial #:

Laboratory Name:

Laboratory Location:

Recovery Comments:



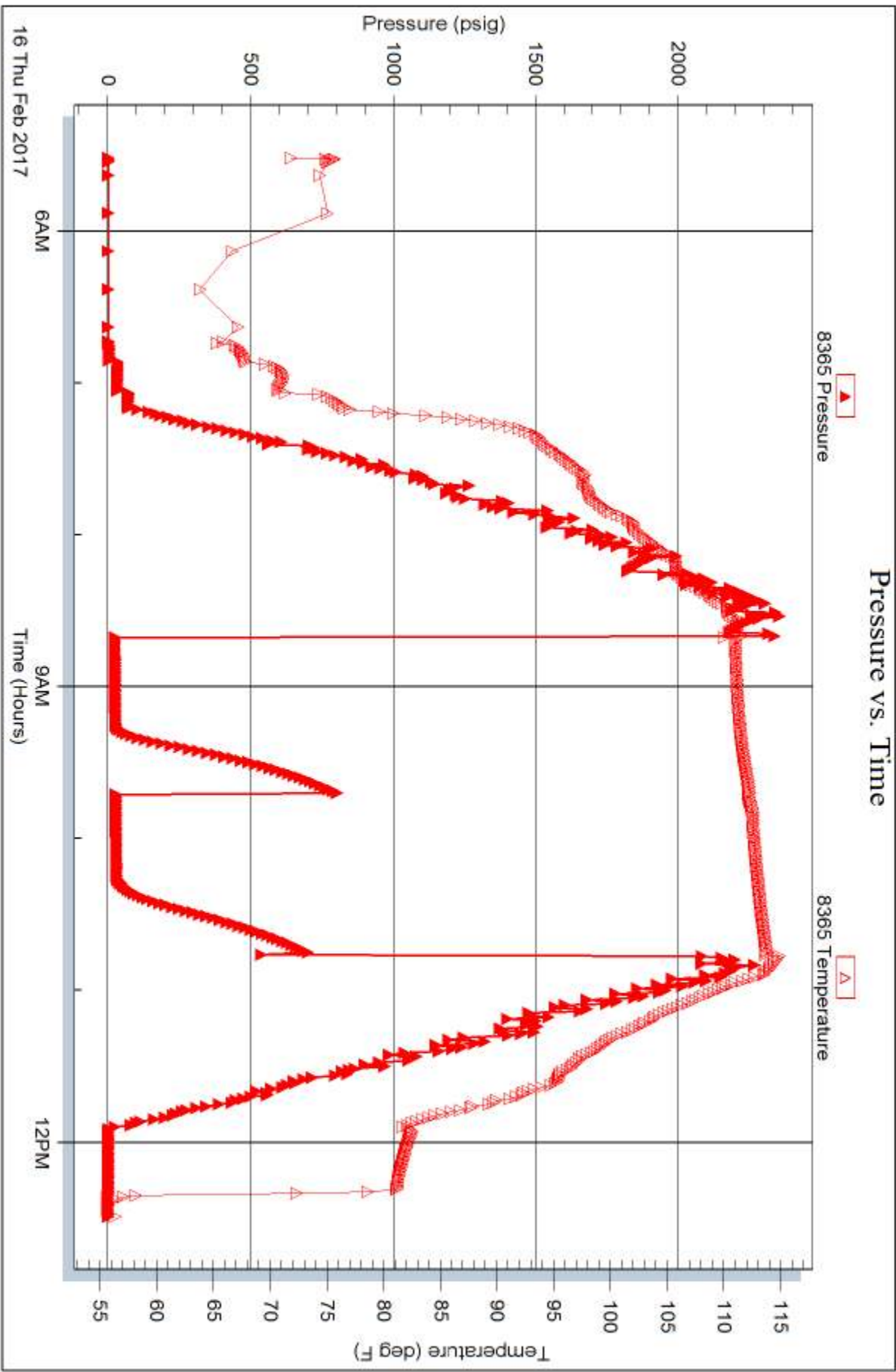
Serial #: 8365

Inside

Landmark Resources, Inc.

Koehn #1-9

DST Test Number: 4



Trilobite Testing, Inc

Ref. No: 61316

Printed: 2017.02.17 @ 11:24:29



## DRILL STEM TEST REPORT

Prepared For: **Landmark Resources, Inc.**

1616 S Voss Rd Ste 600  
Houston, TX 77057

ATTN: Terry McLeod

### **Koehn #1-9**

#### **9-16s-36w Wichita,KS**

Start Date: 2017.02.17 @ 21:00:00

End Date: 2017.02.18 @ 06:28:00

Job Ticket #: 61317                      DST #: 5

Trilobite Testing, Inc  
PO Box 362 Hays, KS 67601  
ph: 785-625-4778 fax: 785-625-5620

Printed: 2017.02.20 @ 09:22:25



**TRILOBITE  
TESTING, INC**

# DRILL STEM TEST REPORT

Landmark Resources, Inc.

**9-16s-36w Wichita,KS**

1616 S Voss Rd Ste 600  
Houston, TX 77057

**Koehn #1-9**

Job Ticket: 61317

**DST#: 5**

ATTN: Terry McLeod

Test Start: 2017.02.17 @ 21:00:00

## GENERAL INFORMATION:

Formation: **LKC H**

Deviated: No Whipstock: ft (KB)

Time Tool Opened: 00:44:45

Time Test Ended: 06:28:00

Test Type: Conventional Bottom Hole (Reset)

Tester: Bradley Walter

Unit No: 78

**Interval: 4195.00 ft (KB) To 4260.00 ft (KB) (TVD)**

Reference Elevations: 3292.00 ft (KB)

Total Depth: 4920.00 ft (KB) (TVD)

3281.00 ft (CF)

Hole Diameter: 7.88 inches Hole Condition: Good

KB to GR/CF: 11.00 ft

**Serial #: 8365**

**Inside**

Press@RunDepth: 161.84 psig @ 4196.00 ft (KB)

Capacity: 8000.00 psig

Start Date: 2017.02.17

End Date:

2017.02.18

Last Calib.: 2017.02.18

Start Time: 21:00:05

End Time:

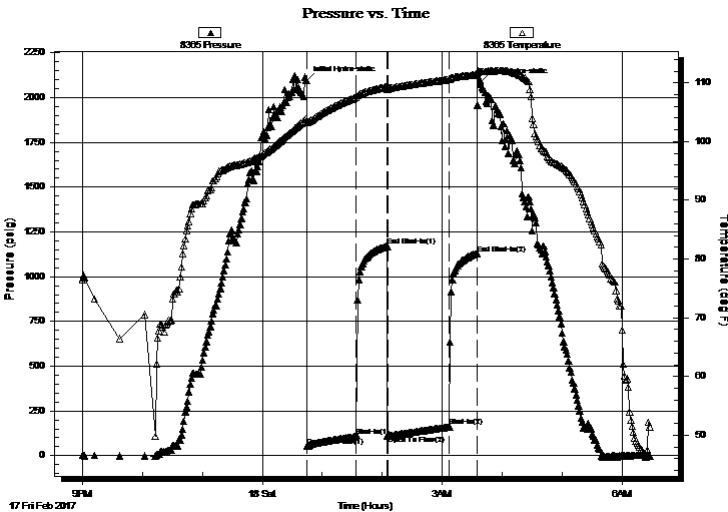
06:28:00

Time On Btm: 2017.02.18 @ 00:44:15

Time Off Btm: 2017.02.18 @ 03:38:15

TEST COMMENT: IF: 5" blow.  
IS: No return.  
FF: 4" blow.  
FS: No return.

## PRESSURE SUMMARY



Time (Min.)	Pressure (psig)	Temp (deg F)	Annotation
0	2096.13	103.90	Initial Hydro-static
1	52.15	103.33	Open To Flow (1)
50	107.93	107.55	Shut-In(1)
81	1169.78	109.36	End Shut-In(1)
82	112.06	109.12	Open To Flow (2)
143	161.84	110.56	Shut-In(2)
171	1130.00	111.37	End Shut-In(2)
174	2085.92	111.92	Final Hydro-static

## Recovery

Length (ft)	Description	Volume (bbl)
280.00	mcw 20m 80w (oil spots)	3.37

## Gas Rates

Choke (inches)	Pressure (psig)	Gas Rate (Mcf/d)

\* Recovery from multiple tests









**TRILOBITE  
TESTING, INC**

# DRILL STEM TEST REPORT

**TOOL DIAGRAM**

Landmark Resources, Inc.

**9-16s-36w Wichita,KS**

1616 S Voss Rd Ste 600  
Houston, TX 77057

**Koehn #1-9**

Job Ticket: 61317

**DST#: 5**

ATTN: Terry McLeod

Test Start: 2017.02.17 @ 21:00:00

## Tool Information

Drill Pipe:	Length: 4137.00 ft	Diameter: 3.80 inches	Volume: 58.03 bbl	Tool Weight: 2500.00 lb
Heavy Wt. Pipe:	Length: 0.00 ft	Diameter: 0.00 inches	Volume: 0.00 bbl	Weight set on Packer: 25000.00 lb
Drill Collar:	Length: 61.00 ft	Diameter: 2.25 inches	Volume: 0.30 bbl	Weight to Pull Loose: 70000.00 lb
			<u>Total Volume: 58.33 bbl</u>	Tool Chased 0.00 ft
Drill Pipe Above KB:	30.00 ft			String Weight: Initial 60000.00 lb
Depth to Top Packer:	4195.00 ft			Final 60000.00 lb
Depth to Bottom Packer:	ft			
Interval between Packers:	725.00 ft			
Tool Length:	752.00 ft			
Number of Packers:	2	Diameter: 6.75 inches		

Tool Comments:

## Tool Description

**Length (ft) Serial No. Position Depth (ft) Accum. Lengths**

Change Over Sub	1.00			4169.00	
Shut In Tool	5.00			4174.00	
Hydraulic tool	5.00			4179.00	
Jars	5.00			4184.00	
Safety Joint	2.00			4186.00	
Packer	5.00			4191.00	27.00 Bottom Of Top Packer
Packer	4.00			4195.00	
Stubb	1.00			4196.00	
Recorder	0.00	8365	Inside	4196.00	
Recorder	0.00	8522	Outside	4196.00	
Perforations	10.00			4206.00	
Change Over Sub	1.00			4207.00	
Drill Pipe	31.00			4238.00	
Change Over Sub	1.00			4239.00	
Perforations	17.00			4256.00	
Blank Off Sub	1.00			4257.00	725.00 Tool Interval
Packer	3.00			4260.00	
Blank Spacing	1.00			4261.00	
Perforations	19.00			4280.00	
Change Over Sub	1.00			4281.00	
Recorder	0.00	8845	Below	4281.00	
Drill Pipe	635.00			4916.00	
Change Over Sub	1.00			4917.00	
Bullnose	3.00			4920.00	1000751.00 Bottom Packers & Anchor
<b>Total Tool Length:</b>	<b>752.00</b>				



**TRILOBITE  
TESTING, INC**

# DRILL STEM TEST REPORT

## FLUID SUMMARY

Landmark Resources, Inc.

**9-16s-36w Wichita,KS**

1616 S Voss Rd Ste 600  
Houston, TX 77057

**Koehn #1-9**

Job Ticket: 61317

**DST#: 5**

ATTN: Terry McLeod

Test Start: 2017.02.17 @ 21:00:00

### Mud and Cushion Information

Mud Type: Gel Chem

Cushion Type:

Oil API:

0 deg API

Mud Weight: 9.00 lb/gal

Cushion Length:

ft

Water Salinity:

31000 ppm

Viscosity: 58.00 sec/qt

Cushion Volume:

bbbl

Water Loss: 7.20 in<sup>3</sup>

Gas Cushion Type:

Resistivity: ohm.m

Gas Cushion Pressure:

psig

Salinity: 7000.00 ppm

Filter Cake: 1.00 inches

### Recovery Information

Recovery Table

Length ft	Description	Volume bbl
280.00	mcw 20m 80w (oil spots)	3.372

Total Length: 280.00 ft      Total Volume: 3.372 bbl

Num Fluid Samples: 0

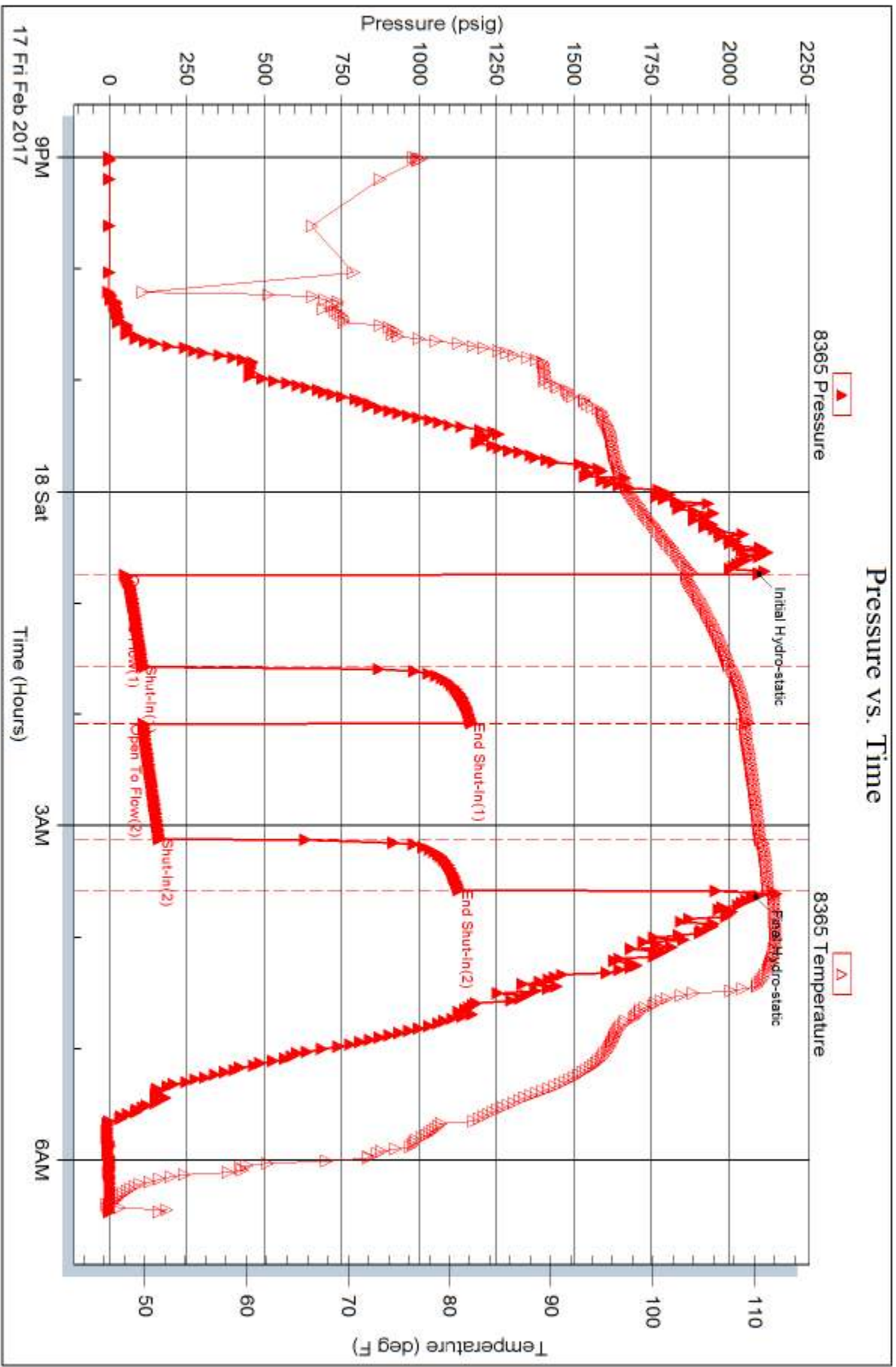
Num Gas Bombs: 0

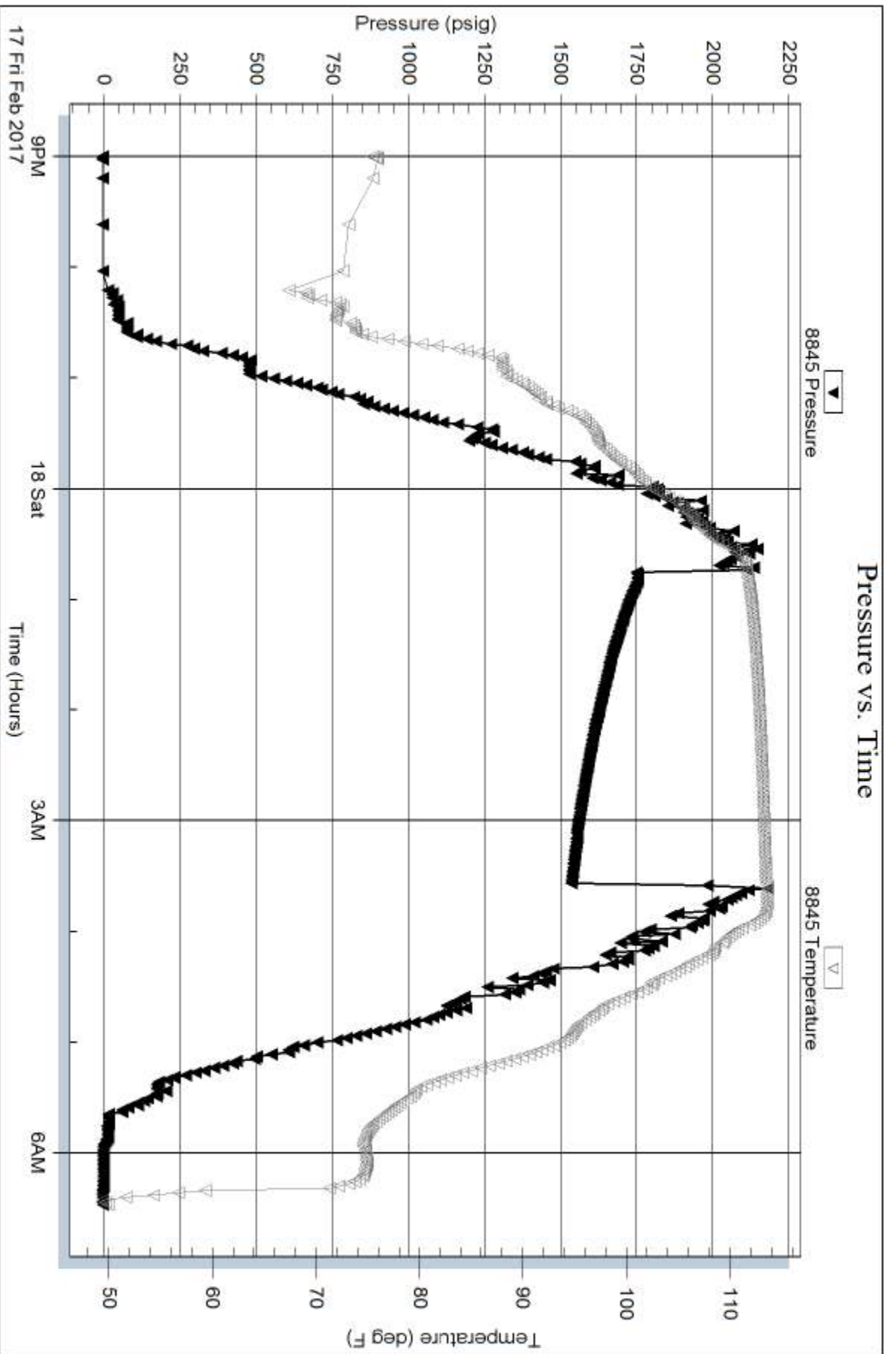
Serial #:

Laboratory Name:

Laboratory Location:

Recovery Comments: rw is .315 @ 49 F = 31000ppm



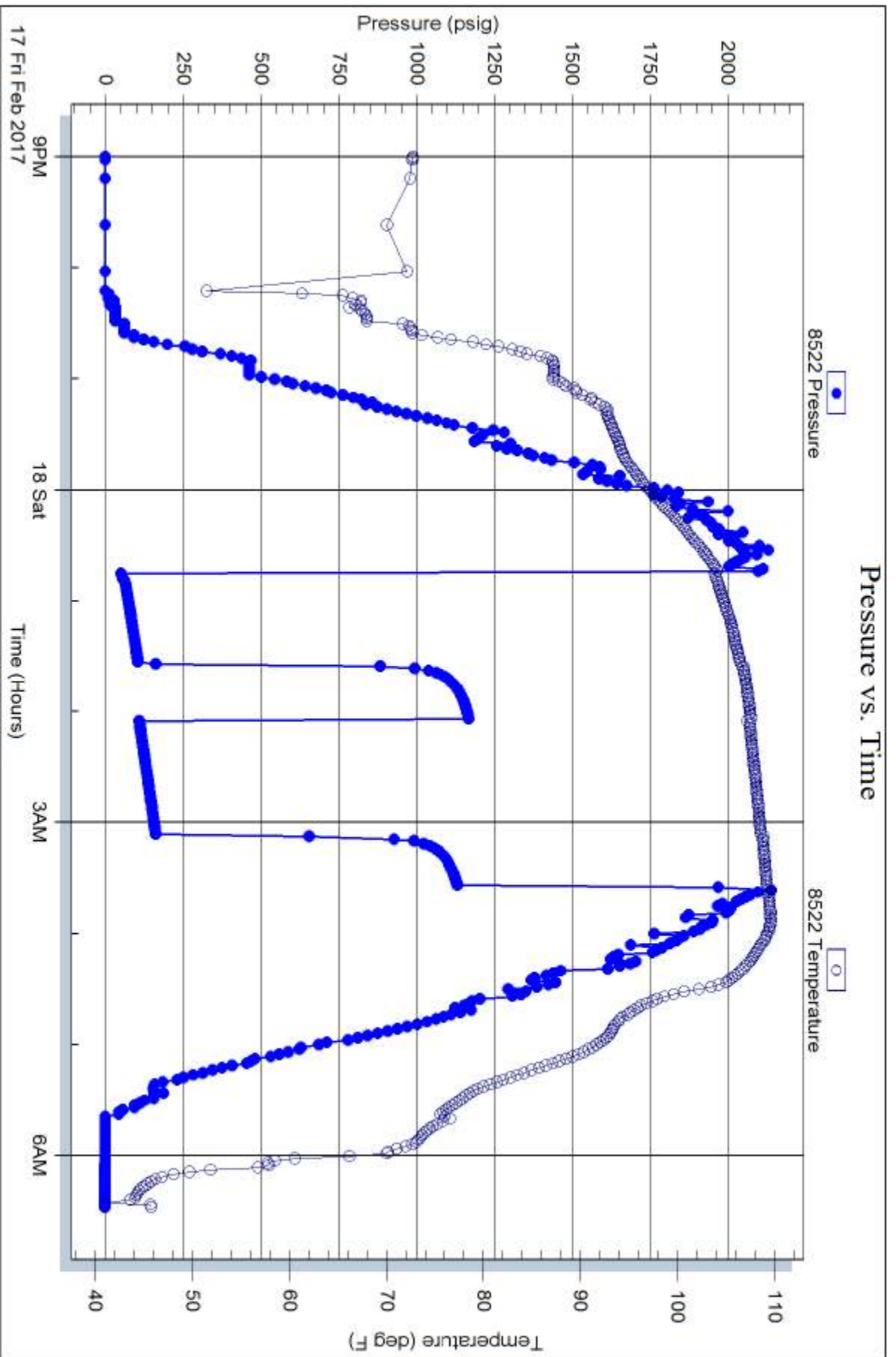


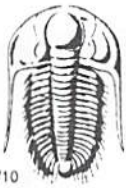
Serial #: 8522

Outside Landmark Resources, Inc.

Koehn #1-9

DST Test Number: 5





# TRILOBITE TESTING INC.

1515 Commerce Parkway • Hays, Kansas 67601

## Test Ticket

NO. 61313

4/10

Well Name & No. Koehn 1-9 Test No. 1 Date 2/11/2017  
 Company Landmark Resources, Inc Elevation 3292 KB 3281 GL  
 Address 1616 S Voss Rd Ste 600 Houston, Tx 77057  
 Co. Rep / Geo. Terry McLeod Rig Mofan 21  
 Location: Sec. 9 Twp. 16s Rge. 36 w Co. Wichita State Ks

Interval Tested 4137-4160 Zone Tested LKC F  
 Anchor Length 23' Drill Pipe Run 3896 Mud Wt. 9.2  
 Top Packer Depth 4132 Drill Collars Run 245 Vis 55  
 Bottom Packer Depth 4137 Wt. Pipe Run 0 WL 7.2  
 Total Depth 4160 Chlorides 4000 ppm System LCM 4#

Blow Description IF BOB @ 2 min.  
ISI No return.  
FF BOB @ 3 min.  
FSI No return.

Rec	Feet of	%gas	%oil	%water	%mud
<u>1450</u>	<u>smcw</u>		<u>98</u>	<u>2</u>	
Rec	Feet of	%gas	%oil	%water	%mud
Rec	Feet of	%gas	%oil	%water	%mud
Rec	Feet of	%gas	%oil	%water	%mud
Rec	Feet of	%gas	%oil	%water	%mud

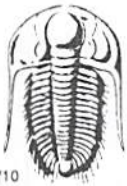
Rec Total 1450 BHT 117 Gravity — API RW 172 @ 49° F Chlorides 61000 ppm

(A) Initial Hydrostatic 2050  Test 1150 T-On Location 1660  
 (B) First Initial Flow 114  Jars \_\_\_\_\_ T-Started 1645  
 (C) First Final Flow 515  Safety Joint 75 T-Open 1858  
 (D) Initial Shut-In 1146  Circ Sub N/C T-Pulled 2148  
 (E) Second Initial Flow 529  Hourly Standby \_\_\_\_\_ T-Out 0008 2/12  
 (F) Second Final Flow 780  Mileage 92 rt 69 Comments \_\_\_\_\_  
 (G) Final Shut-In 1147  Sampler \_\_\_\_\_  
 (H) Final Hydrostatic 2012  Straddle \_\_\_\_\_

Shale Packer 250  Ruined Shale Packer \_\_\_\_\_  
 Extra Packer \_\_\_\_\_  Ruined Packer \_\_\_\_\_  
 Extra Recorder \_\_\_\_\_ Sub Total 0  
 Day Standby \_\_\_\_\_ Total 1544.00  
 Accessibility \_\_\_\_\_ MP/DST Disc't \_\_\_\_\_  
 Sub Total 1544

Approved By \_\_\_\_\_ Our Representative 

Trilobite Testing Inc. shall not be liable for damaged of any kind of the property or personnel of the one for whom a test is made, or for any loss suffered or sustained, directly or indirectly, through the use of its equipment, or its statements or opinion concerning the results of any test, tools lost or damaged in the hole shall be paid for at cost by the party for whom the test is made.



# TRILOBITE TESTING INC.

1515 Commerce Parkway • Hays, Kansas 67601

## Test Ticket

NO. 61314

4/10

Well Name & No. Koehn 1-9 Test No. 2 Date 2/12/2017  
 Company Landmark Resources, Inc Elevation 3292 KB 3281 GL  
 Address 1616 S Voss Rd Ste 600 Houston, Tx 77057  
 Co. Rep / Geo. Terry McLead Rig Murfin 21  
 Location: Sec. 9 Twp. 16s Rge. 36 w Co. Wichita State Ks

Interval Tested 4201 - 4250 Zone Tested LKC H  
 Anchor Length 49' Drill Pipe Run \_\_\_\_\_ Mud Wt. 9.3  
 Top Packer Depth 4196 Drill Collars Run 245 Vis 55  
 Bottom Packer Depth 4201 Wt. Pipe Run Ø WL 8.0  
 Total Depth 4250 Chlorides 4000 ppm System LCM 4#

Blow Description IF: 3" blow  
ISI: No return  
FF: 2 1/2" blow  
FBI: No return

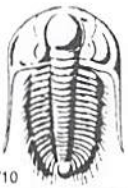
Rec	Feet of	%gas	%oil	%water	%mud
<u>120</u>	<u>50cm</u>	<u>2</u>		<u>98</u>	
Rec	Feet of <u>OTL spots in tool</u>	%gas	%oil	%water	%mud
Rec	Feet of <u>Thick mud</u>	%gas	%oil	%water	%mud
Rec	Feet of	%gas	%oil	%water	%mud

Rec Total 120 BHT 116 Gravity \_\_\_\_\_ API RW \_\_\_\_\_ @ \_\_\_\_\_ °F Chlorides \_\_\_\_\_ ppm

(A) Initial Hydrostatic	<u>2096</u>	<input checked="" type="checkbox"/> Test	<u>1150</u>	T-On Location	<u>1100 2/12</u>
(B) First Initial Flow	<u>16</u>	<input type="checkbox"/> Jars		T-Started	<u>1127</u>
(C) First Final Flow	<u>89</u>	<input checked="" type="checkbox"/> Safety Joint	<u>75</u>	T-Open	<u>13:35</u>
(D) Initial Shut-In	<u>1177</u>	<input checked="" type="checkbox"/> Circ Sub	<u>used/washed 50</u>	T-Pulled	<u>1650</u>
(E) Second Initial Flow	<u>95</u>	<input type="checkbox"/> Hourly Standby		T-Out	<u>0516 2/14</u>
(F) Second Final Flow	<u>171</u>	<input checked="" type="checkbox"/> Mileage	<u>92 R4 69 + 69</u>	Comments	<u>String stuck in hole post test</u>
(G) Final Shut-In	<u>1213</u>	<input type="checkbox"/> Sampler		<input type="checkbox"/> Ruined Shale Packer	
(H) Final Hydrostatic	<u>1990</u>	<input type="checkbox"/> Straddle		<input type="checkbox"/> Ruined Packer	
Initial Open	<u>30</u>	<input checked="" type="checkbox"/> Shale Packer	<u>250</u>	<input type="checkbox"/> Extra Copies	
Initial Shut-In	<u>49</u>	<input type="checkbox"/> Extra Packer		Sub Total	
Final Flow	<u>60</u>	<input type="checkbox"/> Extra Recorder		Total	
Final Shut-In	<u>60</u>	<input checked="" type="checkbox"/> Standby		MP/DST Disc't	
		<input type="checkbox"/> Accessibility			
		Sub Total			

Approved By \_\_\_\_\_ Our Representative [Signature]

Trilobite Testing Inc. shall not be liable for damaged of any kind of the property or personnel of the one for whom a test is made, or for any loss suffered or sustained, directly or indirectly, through the use of its equipment, or its statements or opinion concerning the results of any test, tools lost or damaged in the hole shall be paid for at cost by the party for whom the test is made.



# TRILOBITE TESTING INC.

1515 Commerce Parkway • Hays, Kansas 67601

## Test Ticket

NO. **61315**

4/10

Well Name & No. <u>Koehn 1-9</u>	Test No. <u>3</u>	Date <u>2/15/2017</u>
Company <u>Landmark Resources, Inc</u>	Elevation <u>3292</u>	KB <u>3281</u> GL
Address <u>1616 S Voss Rd Ste 600 Houston, Tx 77057</u>		
Co. Rep / Geo. <u>Terry McLeod</u>	Rig <u>Martin 21</u>	
Location: Sec. <u>9</u> Twp. <u>16s</u> Rge. <u>36w</u> Co. <u>Wichita</u> State <u>Ks</u>		

Interval Tested <u>4443-4490</u>	Zone Tested <u>Marmaton</u>
Anchor Length <u>47'</u>	Drill Pipe Run <u>4310</u> Mud Wt. <u>9.3</u>
Top Packer Depth <u>4438</u>	Drill Collars Run <u>123</u> Vis <u>56</u>
Bottom Packer Depth <u>4443</u>	Wt. Pipe Run <u>0</u> WL <u>7.2</u>
Total Depth <u>4490</u>	Chlorides <u>7500</u> ppm System LCM <u>3<sup>rd</sup></u>

Blow Description IF : 8" blow  
ISI : No return  
FF : 8" blow  
FSI : No return

Rec <u>110</u> Feet of <u>gmco</u>	<u>10</u> %gas	<u>70</u> %oil	%water	<u>20</u> %mud
Rec <u>60</u> Feet of <u>gocm</u>	<u>10</u> %gas	<u>30</u> %oil	%water	<u>60</u> %mud
Rec <u>300</u> Feet of <u>gmco somcu</u>	%gas	<u>3</u> %oil	<u>87</u> %water	<u>10</u> %mud
Rec _____ Feet of _____	%gas	%oil	%water	%mud
Rec _____ Feet of _____	%gas	%oil	%water	%mud

Rec Total 470 BHT 120 Gravity — API RW .239@ 62 °F Chlorides 37,000 ppm

(A) Initial Hydrostatic <u>2225</u>	<input checked="" type="checkbox"/> Test <u>1150</u>	T-On Location <u>0845</u>
(B) First Initial Flow <u>21</u>	<input checked="" type="checkbox"/> Jars <u>250</u>	T-Started <u>0930</u>
(C) First Final Flow <u>112</u>	<input checked="" type="checkbox"/> Safety Joint <u>75</u>	T-Open <u>1151</u>
(D) Initial Shut-In <u>1240</u>	<input checked="" type="checkbox"/> Circ Sub <u>N/C</u>	T-Pulled <u>1436</u>
(E) Second Initial Flow <u>120</u>	<input type="checkbox"/> Hourly Standby _____	T-Out <u>1634</u>
(F) Second Final Flow <u>190</u>	<input checked="" type="checkbox"/> Mileage <u>12 RT 69</u>	Comments _____
(G) Final Shut-In <u>1193</u>	<input type="checkbox"/> Sampler _____	
(H) Final Hydrostatic <u>2153</u>	<input type="checkbox"/> Straddle _____	
Initial Open <u>30</u>	<input checked="" type="checkbox"/> Shale Packer <u>250</u>	<input type="checkbox"/> Ruined Shale Packer _____
Initial Shut-In <u>45</u>	<input type="checkbox"/> Extra Packer _____	<input type="checkbox"/> Ruined Packer _____
Final Flow <u>45</u>	<input type="checkbox"/> Extra Recorder _____	<input type="checkbox"/> Extra Copies _____
Final Shut-In <u>45</u>	<input checked="" type="checkbox"/> Standby _____	Sub Total <u>0</u>
	<input type="checkbox"/> Accessibility _____	Total <u>1794</u>
	Sub Total <u>1794</u>	MP/DST Disc't _____

Approved By \_\_\_\_\_ Our Representative [Signature]

Trilobite Testing Inc. shall not be liable for damaged of any kind of the property or personnel of the one for whom a test is made, or for any loss suffered or sustained, directly or indirectly, through the use of its equipment, or its statements or opinion concerning the results of any test, tools lost or damaged in the hole shall be paid for at cost by the party for whom the test is made.





# TRILOBITE TESTING INC.

1515 Commerce Parkway • Hays, Kansas 67601

## Test Ticket

NO. 61316

Well Name & No. Koehn 1-9 Test No. 4 Date 2/16/2017  
 Company Landmark Resources, Inc Elevation 3292 KB 5281 GL  
 Address 1616 Voss Rd Ste 600 Houston, Tx 77057  
 Co. Rep / Geo. Terry McLeod Rig Mo-Am 21  
 Location: Sec. 9 Twp. 16S Rge. 36W Co. Wichita State KS

Interval Tested 4541-4600 Zone Tested Myrc Station / Ft Scott  
 Anchor Length 59 Drill Pipe Run 4395 Mud Wt. 9.3  
 Top Packer Depth 4530 Drill Collars Run 123 Vis 60  
 Bottom Packer Depth 4541 Wt. Pipe Run 0 WL 8.8  
 Total Depth 4600 Chlorides 8000 ppm System LCM 2#

Blow Description IF 1/2" blow receded to surface  
ISF No return  
FF No blow  
FSF No return.

Rec	Feet of	%gas	%oil	%water	%mud
<u>15</u>	<u>mud</u>			<u>100</u>	
	<u>100- oil spots</u>				

Rec Total 15 BHT 115 Gravity — API RW — @ — °F Chlorides — ppm

(A) Initial Hydrostatic <u>2324</u>	<input checked="" type="checkbox"/> Test <u>1150</u>	T-On Location <u>0430</u>
(B) First Initial Flow <u>18</u>	<input checked="" type="checkbox"/> Jars <u>250</u>	T-Started <u>0531</u>
(C) First Final Flow <u>21</u>	<input checked="" type="checkbox"/> Safety Joint <u>75</u>	T-Open <u>0843</u>
(D) Initial Shut-In <u>813</u>	<input checked="" type="checkbox"/> Circ Sub <u>NYC</u>	T-Pulled <u>1043</u>
(E) Second Initial Flow <u>23</u>	<input type="checkbox"/> Hourly Standby	T-Out <u>1230</u>
(F) Second Final Flow <u>25</u>	<input checked="" type="checkbox"/> Mileage <u>92 NY 69 + 69</u>	Comments <u>loaded tools 2/17 10:30</u>
(G) Final Shut-In <u>715</u>	<input type="checkbox"/> Sampler	
(H) Final Hydrostatic <u>2147</u>	<input type="checkbox"/> Straddle	<input type="checkbox"/> Ruined Shale Packer
	<input checked="" type="checkbox"/> Shale Packer <u>250</u>	<input type="checkbox"/> Ruined Packer
Initial Open <u>30</u>	<input type="checkbox"/> Extra Packer	<input type="checkbox"/> Extra Copies
Initial Shut-In <u>30</u>	<input type="checkbox"/> Extra Recorder	Sub Total <u>0</u>
Final Flow <u>30</u>	<input type="checkbox"/> Day Standby	Total <u>1863</u>
Final Shut-In <u>30</u>	<input type="checkbox"/> Accessibility	MP/DST Disc't
	Sub Total <u>1863</u>	

Approved By \_\_\_\_\_ Our Representative

Trilobite Testing Inc. shall not be liable for damaged of any kind of the property or personnel of the one for whom a test is made, or for any loss suffered or sustained, directly or indirectly, through the use of its equipment, or its statements or opinion concerning the results of any test, tools lost or damaged in the hole shall be paid for at cost by the party for whom the test is made.



# TRILOBITE TESTING INC.

1515 Commerce Parkway • Hays, Kansas 67601

## Test Ticket

NO. 61317

4/10

Well Name & No. Koehn 1-9 Test No. S Date 2-18-2017  
 Company Landmark Resources, LLC Inc Elevation 3292 KB 3251 GL  
 Address 1616 Yoss Rd Ste 600 Houston Tx 77057  
 Co. Rep / Geo. Terry McLeod Rig Martin 21  
 Location: Sec. 9 Twp. 16S Rge. 36W Co. Wichita State Ks

Interval Tested 4195 - 4260 Zone Tested LKC M  
 Anchor Length 65 - 660 Drill Pipe Run 4137 Mud Wt. 9.4  
 Top Packer Depth 4190 - 4195 Drill Collars Run 61 Vis 58  
<sup>Strat</sup> Bottom Packer Depth 4260 Wt. Pipe Run 0 WL 7.2  
 Total Depth 4920 Chlorides 7000 ppm System LCM 4#

Blow Description IF 5" blow  
ISI No return  
FF 4" blow  
FSI No return.

Rec	Feet of	%gas	%oil	%water	%mud
<u>280</u>	<u>ncw</u>			<u>80</u>	<u>20</u>
	<u>OTL SPOTS</u>				

Rec Total 280 BHT 111 Gravity — API RW 315 @ 49° F Chlorides 31000 ppm

(A) Initial Hydrostatic <u>2096</u>	<input checked="" type="checkbox"/> Test <u>1150</u>	T-On Location <u>2045</u>
(B) First Initial Flow <u>52</u>	<input checked="" type="checkbox"/> Jars <u>250</u>	T-Started <u>2100</u>
(C) First Final Flow <u>108</u>	<input checked="" type="checkbox"/> Safety Joint <u>75</u>	T-Open <u>0045</u>
(D) Initial Shut-In <u>1170</u>	<input checked="" type="checkbox"/> Circ Sub <u>N/C</u>	T-Pulled <u>0338</u>
(E) Second Initial Flow <u>112</u>	<input type="checkbox"/> Hourly Standby	T-Out <u>0628</u>
(F) Second Final Flow <u>162</u>	<input checked="" type="checkbox"/> Mileage <u>92 Rt</u> <u>69</u>	Comments
(G) Final Shut-In <u>1130</u>	<input type="checkbox"/> Sampler	
(H) Final Hydrostatic <u>2086</u>	<input checked="" type="checkbox"/> Straddle <u>600</u>	<input type="checkbox"/> Ruined Shale Packer
	<input checked="" type="checkbox"/> Shale Packer <u>250</u>	<input type="checkbox"/> Ruined Packer

Initial Open <u>45</u>	<input type="checkbox"/> Extra Packer	<input type="checkbox"/> Extra Copies
Initial Shut-In <u>30</u>	<input type="checkbox"/> Extra Recorder	Sub Total <u>0</u>
Final Flow <u>60</u>	<input type="checkbox"/> Day Standby	Total <u>2394</u>
Final Shut-In <u>30</u>	<input type="checkbox"/> Accessibility	MP/DST Disc't
	Sub Total <u>2394</u>	

Approved By \_\_\_\_\_ Our Representative

Trilobite Testing Inc. shall not be liable for damaged of any kind of the property or personnel of the one for whom a test is made, or for any loss suffered or sustained, directly or indirectly, through the use of its equipment, or its statements or opinion concerning the results of any test, tools lost or damaged in the hole shall be paid for at cost by the party for whom the test is made.