

Jameson Consulting
API 15-163-24313

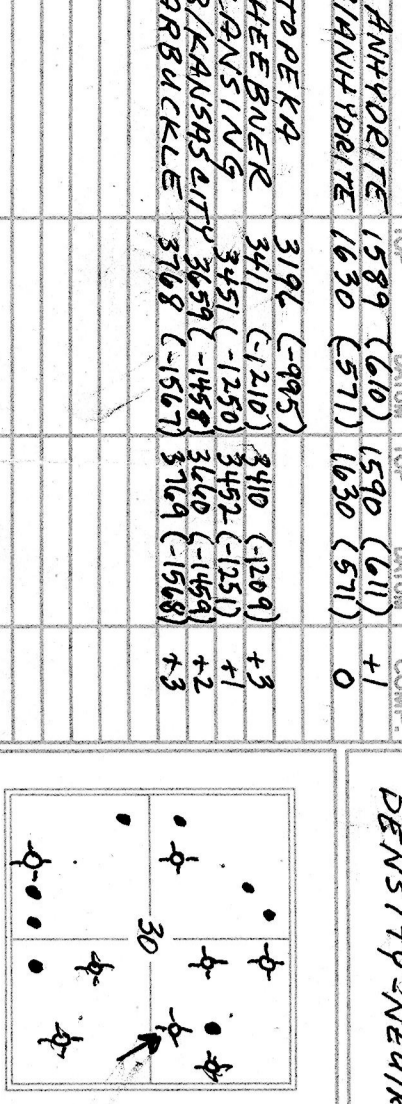
OPERATOR Bowman Oil Company
LEASE KELLER C NEWELL NO #22
FIELD MARCOITE
LOCATION NE SW SE NE
SEC. 30 TWP. 10S RGE. 19W
COUNTY ROOKS STATE KANSAS

CONTRACTOR WHITE KNIGHT DRLLG.
COMM. 07-11-2016 COMP. 07-16-2016
RD. 3841 LOG TO 3841 TD
SAMPLES SHOWN FROM 3200 TO 3841 TD
DRILLING TIME KEPT FROM 3200 TO 3841
SAMPLES EXAMINED FROM 3200 TO 3841
GEOLOGICAL SUPERVISION FROM 3200 TO 3841
MUD UP 3008 TYPE MUD FRESH/CHEMICAL

GEOLOGIST'S REPORT
DRILLING TIME AND SAMPLE LOG
ELEVATION 2201
KB 2201
DF 2196
CI 2196
Measurements Are All From KELLY BUSHING
CASING RECORD
SURFACE 8' 1/8" @ 2201
150 SWS 3/6 CC 28961
PRODUCTION

FORMATION TYPE LOG DATA SAMPLE STRUCT. COMPF.
ANHYDRITE 1570 (611) 0
BLANHYDRITE 1630 (571) 0
TPE KA 3192 (-995) 3192 (-1209) +3
HEEBNER 3410 (-1209) 3410 (-1251) +1
LANSHING 3452 (-1251) 3452 (-1459) +2
B/KANSAS CITY 3660 (-1459) 3660 (-1568) +3
ARBUCKLE 3769 (-1568) 3769 (-1640) +3

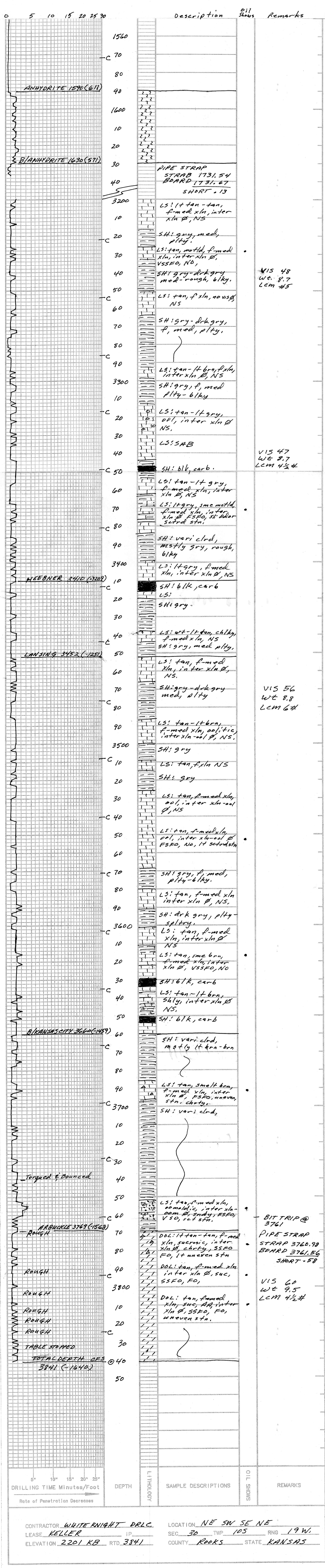
DUAL INDUCTION
ELECTRICAL SURVEYS
MICKO
DENSITY-NEUTRON



REFERENCE WELL FOR STRUCTURAL COMPARISON
KELLER I-3D NW 55 NE SEC 30-10S-19W
ROOKS COUNTY KANSAS
HATCHINSON OIL COMPANY
SEC 30-10S-19W

DATE	DEPTH	IP	SIZE	WGT	TYPE	OPEN CUT	REMARKS

No.	Interval	IP/Thick	WSP/Thin	FP/Thin	FP2/Thin	SH-THI	REMARKS



CONTRACTOR WHITE KNIGHT DRLLG. LOCATION NE SW SE NE
LEASE KELLER IP 2201 SEC. 30 TWP. 10S RNG. 19W.
ELEVATION 2201 KB RTD 3841 COUNTY ROOKS STATE KANSAS