

Geo Log Header
WellSight Systems
Scale 1:240 (5"=100') Imperial
Measured Depth Log

Well Name: Hobbs # 2-24
API: 15-065-24125-00-00
Location: 1405' FSL & 855' FEL
License Number: 33268
Spud Date: 11-24-16
Surface Coordinates: SE-SW-NE-SE of Sec; 24-10S-25W
(1405' FSL & 855' FEL)
Bottom Hole Coordinates:
Ground Elevation (ft): 2453' K.B. Elevation (ft): 2460'
Logged Interval (ft): 3450' To: 4060' Total Depth (ft): 4060'
Formation: Lansing/ Kansas City
Type of Drilling Fluid: Chemical-Polymer

Region: Graham Co., KS
Drilling Completed: 12-04-16

Printed by STRIP.LOG from WellSight Systems 1-800-447-1534 www.WellSight.com

OPERATOR

Company: RL Investment, LLC.
Address: Hill City, KS.

GEOLOGIST

Name: Patrick J. Deenihan
Company: Independent
Address: P.O. 781929
Wichita, KS 67278

DSTs

DST # 1 (3771'-3816) 30"-45"-45"-60"
IF: tool slid 10'-1" blow bled off. 1/4' to 1.25". ISI: No Return
FF: No blow buildt to 1.25" ISI: No Return

REC: 127' Drilling mud with oil spots in Tool.
IFP: 43#-63# FFP: 64#-77# BHT; 110 F
ISIP: 908# FSIP: 903#
IHP: 1821# FHP: 1814#

DST # 2 (3815' - 3836') 30"-45"-45"-60"
IF: 1.1/2" ISI: No Return
FF: 1/2" FSI: No Return

REC: 65" MW (53% Wtr., 47% Mud, with a few oil specks.)
IFP: 12# -31# FFP: 34# -44# BHT; 109 F.
ISIP: 611# FSIP: 462#
IHP: 1849 FHP: 1841#

DST: # 3 (3893' - 3920") 30"-45"-45"-60"
IF: 1/2" ISI: No Return
FF: No Blow FSI: No Return

REC 5' Mud (100% Mud)

ISIP: 767#
IHP: 1881#

FSIP: 798#
FHP: 1864#

BHT, 111 F.

DST # 4 (3943' -3984')
IF: BOB in 9", 50secs.
FF: BOB in 9" 45secs.

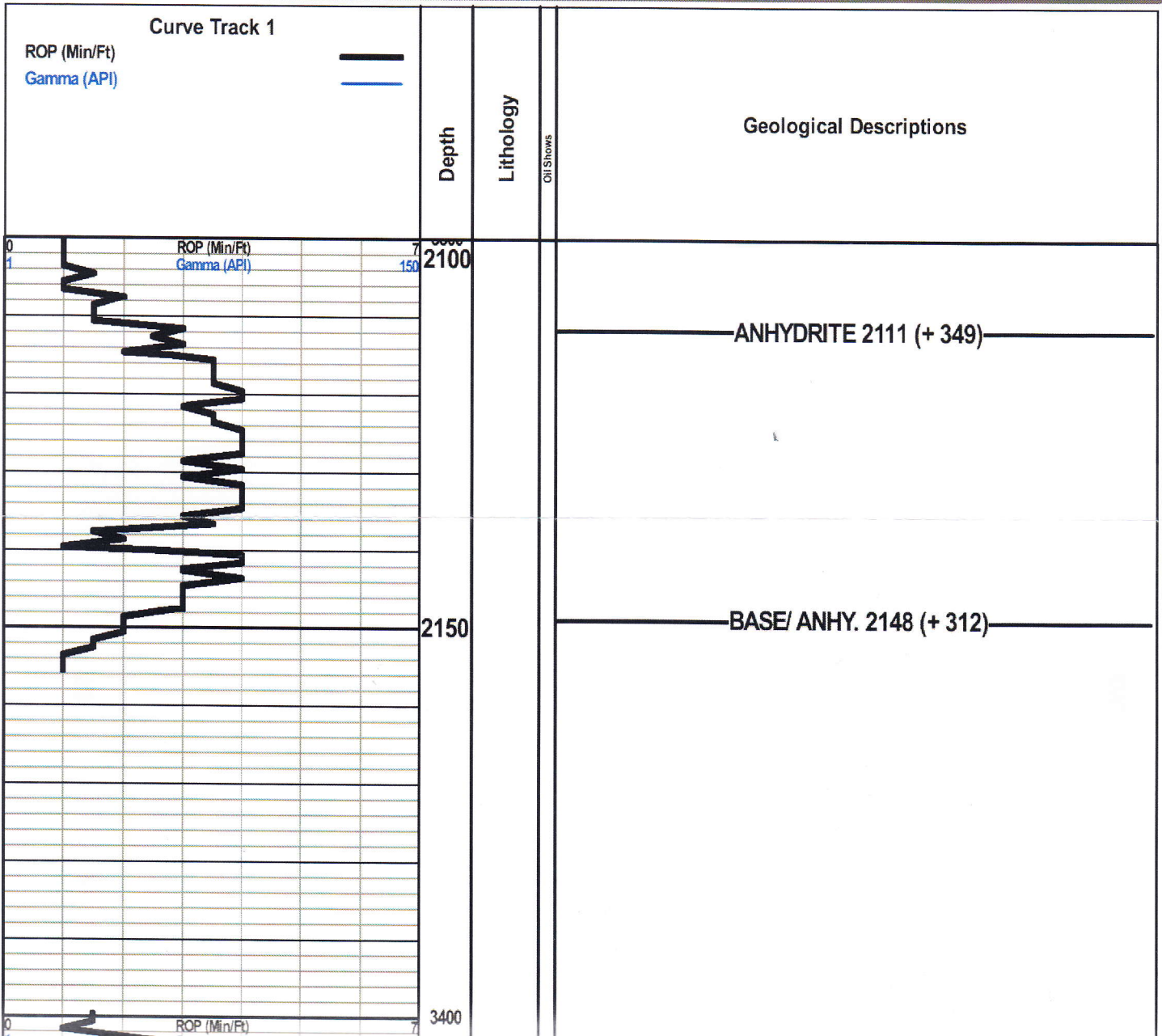
30"-45"-45"-60"
ISI: 2" Return Blow
FSI: 8.5" Return Blow

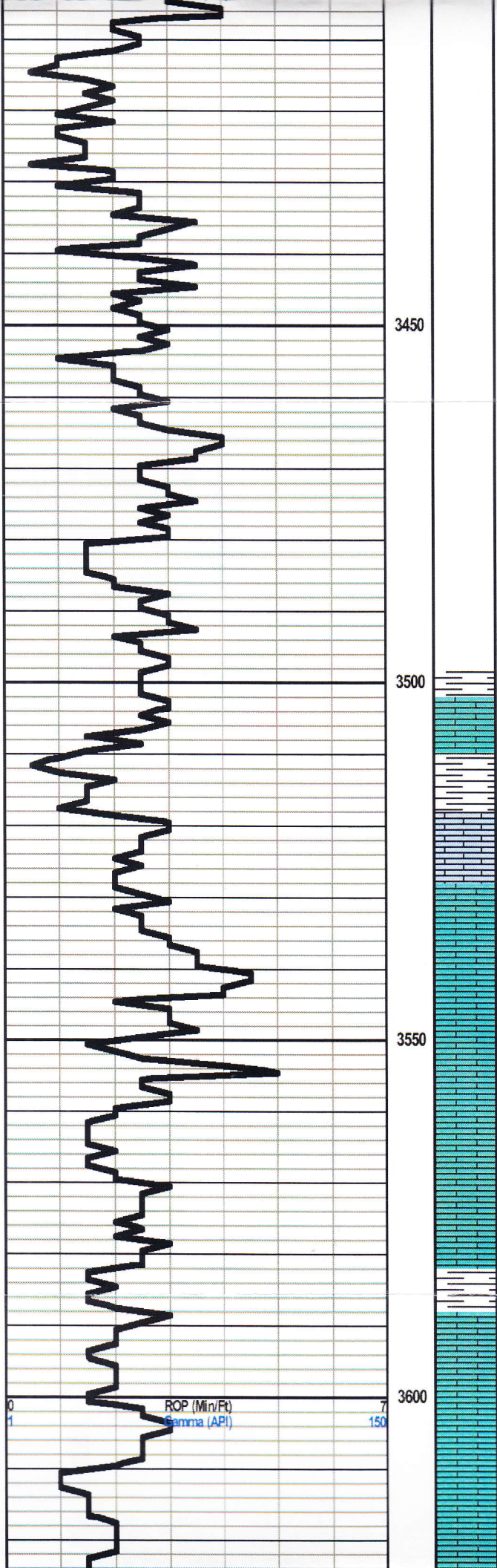
REC: 818' GIP; 194' Clean Oil (Gravity = 32 @ 60 degrees F.;
122'GHOCM (12% Gas, 43% Oil & 45% Mud)
TOTAL FLUID = 316' (72% Oil & 28% Mud)

IFP: 21#-77#
ISIP: 1170#
IHP: 1923#

FFP: 88#-126#
FSIP: 1093#
FHP: 1903#

Gravity: 32
BHT: 121





3450

3500

3550

3600

TOPEKA 3528 (- 1068)

Ls., Wht., Crm., Lt-Gry., Brn., Gry., Mott/Sing Fn-xln. Very Fssl. (frag. to Ool)., Chalky. No Show.

Ls., Wht., Crm., Sing., Chalky, Fn-xln., Sti-Fssl. No Show. (Sample washes very Chalky.

ROP (Min/Ft) 7
Gamma (API) 150

Sh., Black Carb.

Ls., Crm., Tan, Lt-Gry., Mott/Sing., Fssl., Sub-Cherty, Micro-xln. No Show.

3650

Ls., Wht., Crm., Brn., Lt-Gry., Mott/Sing., Mico. to Fn-xln., Fssl., Sub-Chalky. No Show. (Abund. Red Beds.)

SHORT TRIP RANAT

Queen Hill 3679 (- 1290)

Sh., Black Carb.

Ls., Wht., Crm., Sing., Lt-Gry., Fn-xln., Fssl., No Show.

3700

Ls., Crm., Lt-Gry., Sing., Fn-xln., and Fssl. No Show.

Ls., Wht., Crm., Lt-Gry., Sing., Fn-xln. Micro-Ool., and Chalky. No Show.

Ls., Crm., Tan., Lt-Gry., Sing., Dense Fn-xln., to abund. P-ffl. No Show.

HEEBNER 3741(- 1281)

Sh., Abund. Black Carb

Ls., Crm., Lt-Gry., Dense Micro-xln. No Show.

3750

Sh., Gry., Burnt Orange., Brn., Argil.

TORONTO 3764 (- 1304)

Ls., Wht., Tan, Gry., Fn. to P-inter-xln., Fssl in Part. Mott/Sing. Black Sh., inclusions. sli mica, and trc. of Black Gilsbnitic Str. No Show Of live or Free Oil

LANSING 3775 (- 1315)

Ls., Crm., Sing., Fn-xln. to G-Fssl porosity, inter-xln and inter-Ool. G-PP to G-vug porosity carrying a good Show of Lt- Brn., Free oil. trc of Gassy LFO. Fair to Strong odor

" A "

1

3800

Sh., Blk, Gry., Brn., Argil

Ls., Crm., Tan, Fn. to micro-xln., Fssl., (Ool densely cemented Ool's to Good Inter-xln. Vug. porosity), GSLFO Strong Odor Scattered Fluor. Trc of sub-Chalky and sub- Cherty Ls.

Sh., Gry., Brn., Green, Maroon Argil to silty.

" B "

CFS

Ls., Wht to Crm., Sing., Fn-xln., sli -Chalky. G-inter-Fssl to Ool with Lt. Brn. -LFO. Good to strong odor. P-scattered Fluor.

" D "

2

Ls., Wht., Crm., Fn-xln to very Chalky No Show.

CFS

Sh., Gry., Brn., Argil.

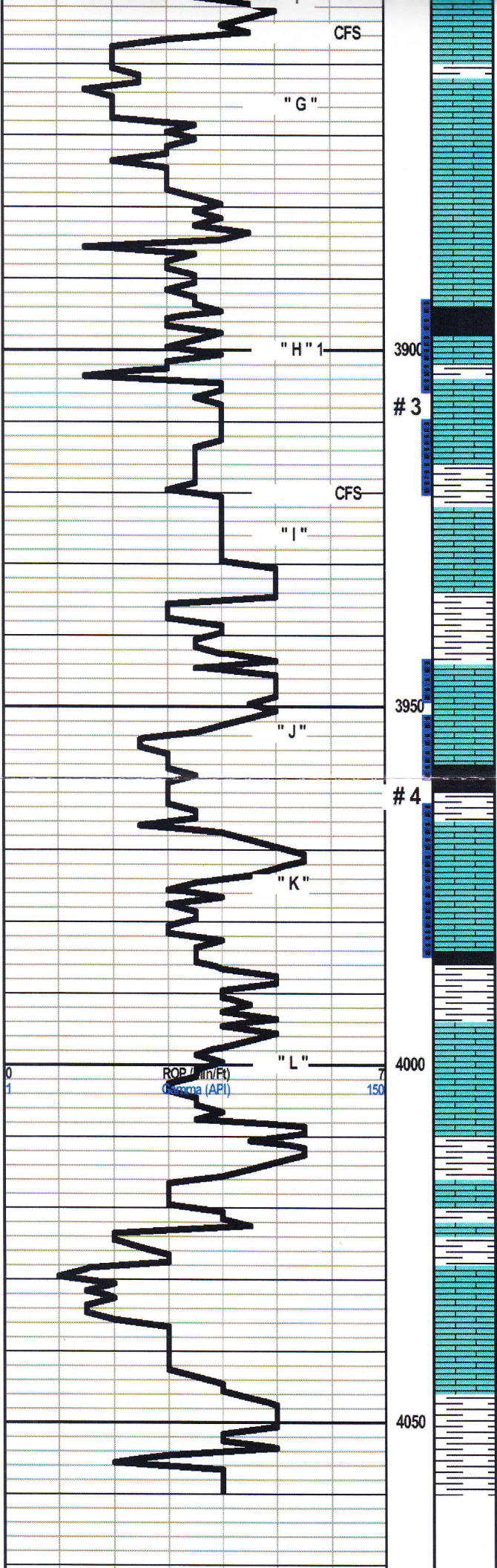
Ls., Wht to Lt Gry., Sing., Micro-xln to chalky. No Show.

" E "

OP (Min/Ft)
Gamma (API)

0
1

7
150



Ls., Wht., Crm., Sing., Fn-xln sub-fssl., chalky. Samples wash white. Trc of spotty Brn Oil-Stn., no LFO., No Odor no Fluor.
 Sh., Gry., Brn Grn., Argil
 Ls., Dense Micro-xln., Chalky no show.
 Ls., As/ Above with P-Fssl. Ool. porosity.

MUNCIE CK. 3894 (- 1434)

Sh., Blk Carb.
 Ls., Tan, Brn., Gry., Fn-xln. to dence Ool., Trc of Dk. Brn oil staining., V-Fain Odor, P- Fluor.
 Sh., Vari Color., Argil.
 Ls Wht., Crm., Sing Micro-Fn-xln., sli Fssl., Trc of LFO. Scattered Brn to Lt Brn., Oil edge Sat, and Stn. Faint odor.
 Sh., Black Carb.
 Sh., Gry., Brn., Grn. Argil.

Ls., Wht., Lt- Gry., Micro. to Fn-xln., Mott/Sing., Abund. Brn to Black oil Stn. No Free oil., Ft- odor. Stiated Stn with P-Fluor. Very Tight.

Sh., Gry., Brn. Argil.

Ls., Crm., Tan, Brn., Fn-xln to Fssl. Fair Inter-xln porosity in a few pcs. PP- to Shallow inter-xln porosity in several pcs. F-SLFO., (Brown) Good odor Scattered F-Fluor.

Sh., Blk Carb.
 Sh., Gry and Gummy Choc. Brn.
 Ls., Crm to Brn., to light Gry., Fn-cln., Fssl., Sub-Chalky. F-Show of Black to Dk Brn., F.O. Fair odor -P-Fluor. trc of Blk Dead oil Stn

Sh., Blk Carb
 Sh., Vari- Color.
 Ls., Crm., Lt-Gry Fn-xln., to Micro-xln., Chalky., No Show.

B. K. C. 4008 (-1548)

Sh., Vari-Color., with abundant Choc. Brn. Gummy.
 Ls., Wht., Lt-Gry. Dense Micr0-xln., P-Fssl., Sub-Chalky to Cherty., No Show
 Sh., Vari-Color. Argil.

