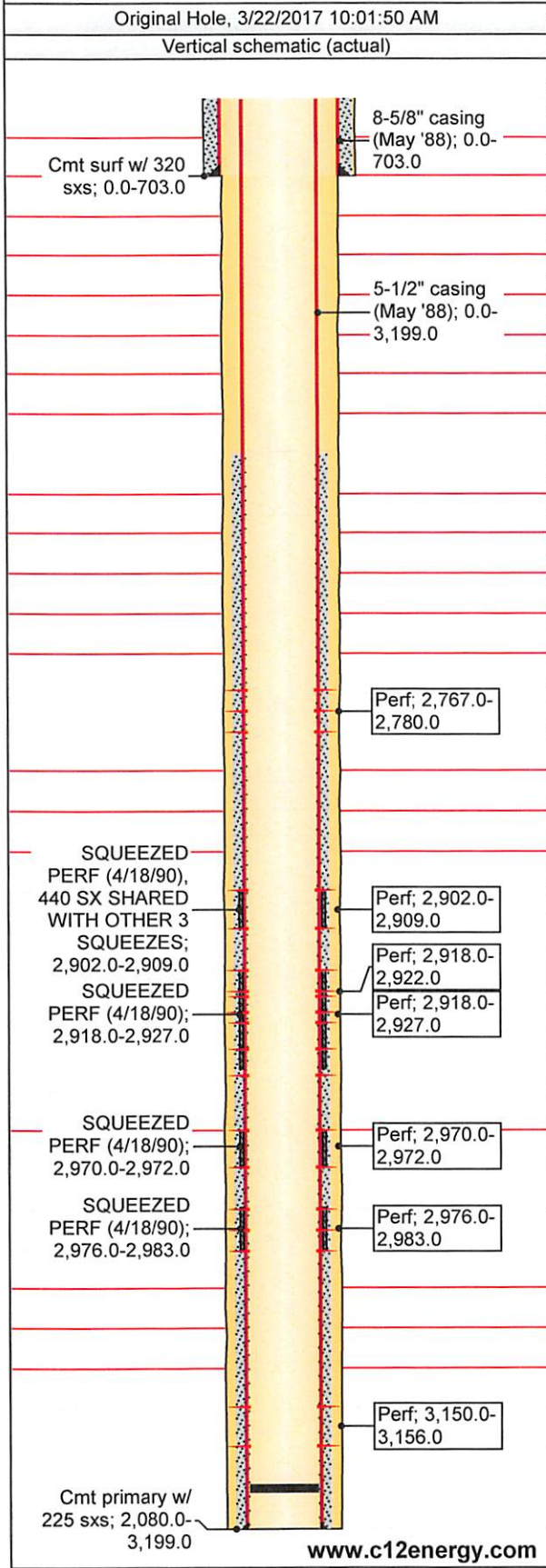


API/UWI 15-167-22809	Operator C12: Kansas Oil, LLC	Well Status TA	License #
Rig Release Date 6/4/1988	Surface Legal Location 14S 13W Sec 30 E2 SE SW NW	Latitude (°) 38° 48' 26.788" N	Longitude (°) 98° 48' 49.568" W
Abandon Date 1/1/1900	Original KB Elevation (ft) 1,748.00	Total Depth (ftKB) 3,199.0	PBTD (All) (ftKB) Original Hole - 3,174.0

Comment



Fluid Level Tests

Date	Fluid Level (ftKB)
------	--------------------

Rod Pump Details

Current Stroke Length (in)	Strokes Per Minute (spm)
----------------------------	--------------------------

Wellbore Sections

Section Description	Size (in)	Actual Top Depth (ftKB)	Actual Btm Depth (ftKB)
	10 5/8	0.0	703.0
	8	703.0	3,199.0

Casing Components

Item Description	ID (in)	Grade	Joints	Length (ft)	Btm (ftKB)
8-5/8" casing (May '88)				703.01	703.0
5-1/2" casing (May '88)				3,199.04	3,199.0

Tubing Components

Item Description	OD (in)	Wt (lb/ft)	Grade	Joints	Length (ft)	Btm (ftKB)
------------------	---------	------------	-------	--------	-------------	------------

Rod Components

Item Description	OD (in)	Wt (lb/ft)	Grade	Joints	Length (ft)	Btm (ftKB)
------------------	---------	------------	-------	--------	-------------	------------

Stimulations & Treatments

Date	Type	Min Top Depth (ftKB)	Max Btm Depth (ftKB)
4/23/1990	1000 gals 15% (4/23/90)	2,767.0	2,780.0
	Max Treat Pressure (psi)	Avg Treat Pressure (psi)	Max Treat Rate (gpm)
	Avg Treat Pressure (psi)	Max Treat Rate (gpm)	Avg Treat Rate (gpm)
Stim/Treat Fluid			
4/21/1990	Retrt C & D w/ 500 gals 28% NE (4/21/90)	2,902.0	2,922.0
	Max Treat Pressure (psi)	Avg Treat Pressure (psi)	Max Treat Rate (gpm)
	Avg Treat Pressure (psi)	Max Treat Rate (gpm)	Avg Treat Rate (gpm)
Stim/Treat Fluid			
4/20/1990	500 gals 15% DSFF (4/20/90)	3,150.0	3,156.0
	Max Treat Pressure (psi)	Avg Treat Pressure (psi)	Max Treat Rate (gpm)
	Avg Treat Pressure (psi)	Max Treat Rate (gpm)	Avg Treat Rate (gpm)
Stim/Treat Fluid			
6/2/1988	3500 gals 28% NE (6/2/88)	2,902.0	2,927.0
	Max Treat Pressure (psi)	Avg Treat Pressure (psi)	Max Treat Rate (gpm)
	Avg Treat Pressure (psi)	Max Treat Rate (gpm)	Avg Treat Rate (gpm)
Stim/Treat Fluid			
6/1/1988	3000 gals 28% NE (6/1/88)	2,970.0	2,983.0
	Max Treat Pressure (psi)	Avg Treat Pressure (psi)	Max Treat Rate (gpm)
	Avg Treat Pressure (psi)	Max Treat Rate (gpm)	Avg Treat Rate (gpm)
Stim/Treat Fluid			