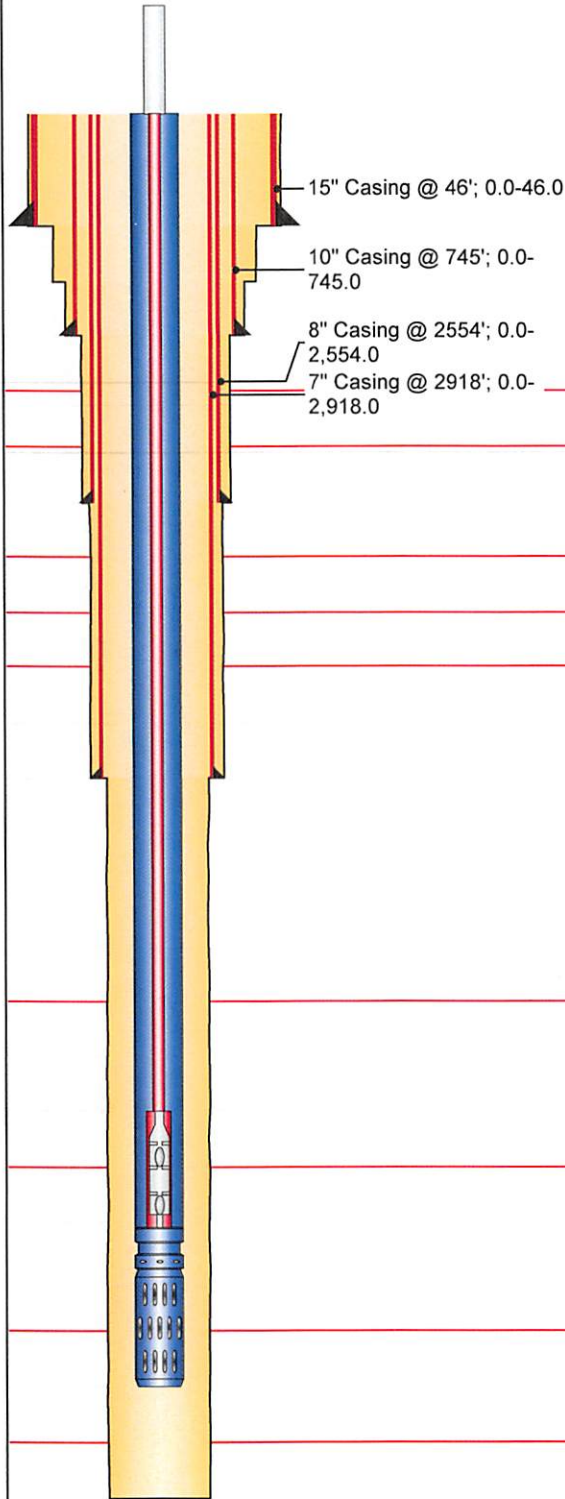


API/UWI 15-167-07024	Operator C12: Kansas Oil, LLC	Well Status TA	License #
Rig Release Date 11/29/1940	Surface Legal Location 14S 14W Sec 26 C NE NW SE	Latitude (°) 38° 48' 16.907" N	Longitude (°) 98° 50' 30.537" W
Abandon Date 1/1/1900	Original KB Elevation (ft) 1,772.02	Total Depth (ftKB) 3,023.0	PBTD (All) (ftKB)

Comment

Original Hole, 3/22/2017 10:08:47 AM

Vertical schematic (actual)



Fluid Level Tests

Date 5/21/2015	Fluid Level (ftKB) 2,765.0
-------------------	-------------------------------

Rod Pump Details

Current Stroke Length (in) 22.00	Strokes Per Minute (spm) 11
-------------------------------------	--------------------------------

Wellbore Sections

Section Description	Size (in)	Actual Top Depth (ftKB)	Actual Btm Depth (ftKB)
	15 1/4	0.0	46.0
	12 1/4	46.0	449.0
	10 3/4	449.0	745.0
	9	745.0	2,554.0
	8	2,554.0	2,918.0
	6	2,918.0	3,023.0

Casing Components

Item Description	ID (in)	Grade	Joints	Length (ft)	Btm (ftKB)
10" Casing @ 745'				745.01	745.0
15" Casing @ 46'				46.00	46.0
7" Casing @ 2918'				2,918.00	2,918.0
8" Casing @ 2554'				2,554.03	2,554.0

Tubing Components

Item Description	OD (in)	Wt (lb/ft)	Grade	Joints	Length (ft)	Btm (ftKB)
2-7/8" Tubing	2 7/8	6.50	J-55	95	2,968.00	2,968.0
Pump Seating Nipple	2 7/8				1.00	2,969.0
MA	2 7/8				15.00	2,984.0

Rod Components

Item Description	OD (in)	Wt (lb/ft)	Grade	Joints	Length (ft)	Btm (ftKB)
1-1/4" PR Polished Rod	1 1/4				16.00	0.0
118-3/4" Rods	3/4	1.63	D	118	2,958.00	2,958.0
2-1/2" x 1-1/2" x 10' Pump	1 1/2				10.00	2,968.0

Stimulations & Treatments

Date 11/29/1940	Type acid	Min Top Depth (ftKB) 2,952.0	Max Btm Depth (ftKB) 3,020.0
Max Treat Pressure (psi)	Avg Treat Pressure (psi)	Max Treat Rate (gpm)	Avg Treat Rate (gpm)

Stim/Treat Fluid