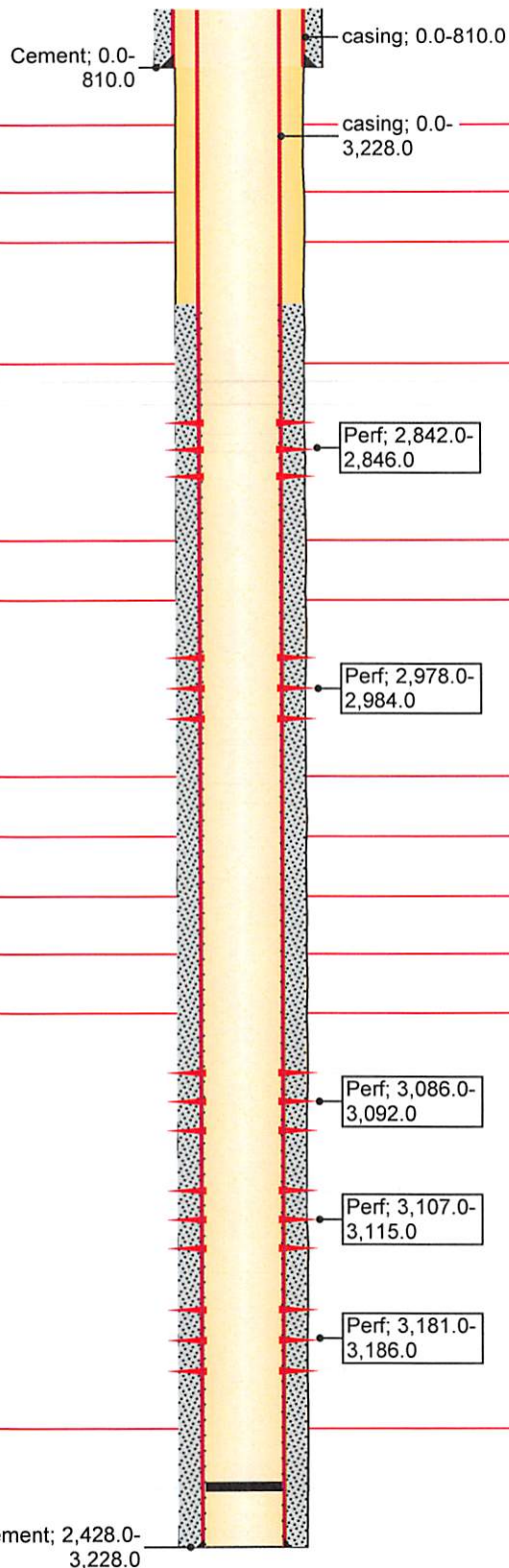


API/UWI 15-167-21394	Operator C12: Kansas Oil, LLC	Well Status TA	License #
Rig Release Date 12/28/1979	Surface Legal Location 14S 14W Sec 26 SW NE NW	Latitude (°) 38° 48' 36.404" N	Longitude (°) 98° 50' 55.495" W
Abandon Date 1/1/1900	Original KB Elevation (ft) 1,812.00	Total Depth (ftKB) 3,228.0	PBTD (All) (ftKB) Original Hole - 3,215.0

Comment

Original Hole, 3/22/2017 10:09:12 AM

Vertical schematic (actual)



### Fluid Level Tests

Date 4/23/2015	Fluid Level (ftKB) 1,141.9
-------------------	-------------------------------

### Rod Pump Details

Current Stroke Length (in)	Strokes Per Minute (spm)
----------------------------	--------------------------

### Wellbore Sections

Section Description	Size (in)	Actual Top Depth (ftKB)	Actual Btm Depth (ftKB)
	10 5/8	0.0	810.0
	8.097	810.0	3,228.0

### Casing Components

Item Description	ID (in)	Grade	Joints	Length (ft)	Btm (ftKB)
casing				3,228.04	3,228.0
casing				810.01	810.0

### Tubing Components

Item Description	OD (in)	Wt (lb/ft)	Grade	Joints	Length (ft)	Btm (ftKB)
------------------	---------	------------	-------	--------	-------------	------------

### Rod Components

Item Description	OD (in)	Wt (lb/ft)	Grade	Joints	Length (ft)	Btm (ftKB)
------------------	---------	------------	-------	--------	-------------	------------

### Stimulations & Treatments

Date	Type	Min Top Depth (ftKB)	Max Btm Depth (ftKB)
	acid	3,090.0	3,110.0
Max Treat Pressure (psi)	Avg Treat Pressure (psi)	Max Treat Rate (gpm)	Avg Treat Rate (gpm)

Stim/Treat Fluid