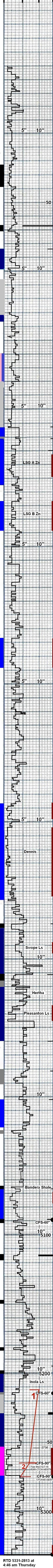


FIELD REPORT



0" 5" 10" 15"

4250 Geologist on location at 4250 feet

Is cream fn oolitic and fn xln

Is cream fn oolitic, chalky, traces of chert tan-brn fresh, opaque, oolitic, some with dk gray ooids

4300

Is cream-tan fn xln dnm lesser ls cream fn oolitic, chalky

shales black and dk gry (HW-111u lBall)

50

Is tan-brn fn and fn-med oolitic, lesser ls tan fn xln dn, assoc. chert gry-white fresh, opaque, oolitic

Heebner Shale 4367-1849 (HW-91u lBall)

shales blk

Toronto

Is cream fn-med suboolitic, fossilif (coarse dk gry to blk clasts)

4400

shales gry, gry-green

shales gry, gry-green

50

Is cream fn xln with assoc. dolomite crem fn xln to some sucrosic, scattered ls gry-brn fn xln, grainy, coarse dk gry to blk clasts and fossils

shales green, gry-green, dk gry

4500

Brn Ls 4513-1995

Is tan and cream fn xln

Lansing 4521-2003

7am Sun. 12-4-16
Drig 4530 feet

LSG A Zn

Is cream and tan fn xln dn, some chalky and suboolitic to suboomoldic

50

Is brn and tan fn xln dn to suboolitic, scattered chert cream-gry, fresh opaoue

LSG B Zn

Is tan-brn fn xln dn, some chalky to weathered

4600

Is tan-brn fn xln fn xln dn, some suboolitic, scattered chalk

Is tan-brn fn xln dn

Is tan-brn fn xln fn xln dn, some suboolitic, scattered chalk

50

Is tan to brn fn xln dn, few chalky

Is tan-brn fn xln fn xln dn, some suboolitic, scattered chalk

4700

Is tan-brn fn xln dn, some weathered

Is cream to tan fn xln dn and fn-med oolitic, grainy, occ. blk and dk gry ooids

50

Is tan and cream fn xln dn to suboolitic

Is tan and cream fn xln dn to suboolitic lesser fn-med oolitic

Is tan fn xln dn and fn-med oolitic with leached porosity, ABUNDANT CHALK, most pcs. chalk laced, SAMPLES WASH MILKY

4800

Is brn med and coarsely oolitic, uncoated brn clasts in weathered matrix, CHALK 10%, MOST PCS. CHALK LACED, no shows, odor or cut

Dennis

Is brn med and coarsely oolitic, uncoated brn clasts in weathered matrix, CHALK 10%, MOST PCS. CHALK LACED, no shows, odor or cut

50

Is brn and tan med and lesser coarsely oolitic to suboomoldic, assoc. chalk and chalky ls, increase in ls tan-brn fn xln dn

Stark Shale 4974-2456 (HW-70u analog, Recyc - HW-35u)

shales black

Swope Ls

Is brn and tan med and lesser coarsely oolitic to some suboomoldic, assoc. chert cream and chalky ls, lesser ls tan fn xln dn

4900

Hush Shale 4911-2393 (HW-60u analog)

shales black

shales gry, green, dk gry

Hertha

Is cream and tan fn cln dn, scattered med oolitic ls, assoc. chalk

Pleasanton Ls

Is tan to brn med oolitic and xln, assoc. chalky ls

50

7am Monday 12-5-16
Drig 4960

Is cream-brn fn xln dn, some vfn oolitic

BKC 4982-2464

shales gry, gry-green, dk gry, some maroon, silty with black

10"

5000 Marmaton 5002-2484

Is cream-tan fn xln dn to a few suboolitic and chalky

shales gry, dk gry

Is cream-tan fn xln dn and vfn-fn oolitic, few pcs. with leached porosity, chalk laced in part

50

black shale (HW-20u - analog)

Bandera Shale - Pawnee Ls 5067-2549

Is tan fn xln dn, some suboolitic and oolitic grades to chalky ls, assoc. chert gry-tan, fresh, opaque and subopaque, fossilif., spicular in part, NO GAS INCREASE, NO SHOWS OIL OR GAS, NO FLUOR OR CUT
Shrill Trip 30 Stands - CTCH 60"
Drill Ahead

CFS-60

Labette Shale 5090-2572 (Hw-45u analog)

Is cream and tan lesser brn fn xln dn grades to chalk and weathered ls

10"

5100

Cherokee Shale 5114-2596 (HW-65u analog)

Is cream-tan fn xln dn and equally chalky, lesser ls tan fn-med oolitic with dk gry ooids

shales black (HW-25u analog)

50

Is gry and cream med to coarsely oolitic, sparse chert gryish brn med oolitic and fossilif, scattered chalky ls

shales black (HW-30u analog)

Is brn fn xln dn and lesser ls gry with green tint fn oolitic, some with coarsely embedded clasts

7am Tues. 12-6-16
Drig 5195

10"

5200

Inola Ls

Is tan-brn med oolitic, dn matrix

DST 1] 5212-5265 (Miss. Dolo.)

CFS-60

BP 5214-2695

shales varicolored (lt green, blue-green, soft, maroon, silty, soft and black), assoc. chert cream to tan, fresh, subopaque, blocky HW-47u analog, recycled HW-35u)

Miss. Unc. 5229-2711

Is tan and cream to brn fn xln to suboolitic, assoc. chert tan-brn sprd, fresh, opaque and subopaque

Is cream-white fn xln to fn oolitic dn, some sandy and gritty, scattered chalky ls, sparse chert brn, fresh, subopaque, blocky

50

Is cream-white fn-med xln to suboolitic, assoc. dolomite tan vfn sucrosic and vsl oolitic. GOOD SHOWS CLEAR LIVE OIL, SOME GASSY on break, oil sheen thruout, bright spid gold fluor wet and dry, FAST STREAMING CUT, light to faint odor, 5% with hvly spid and some even saturation
Gas Increase: HW-1200u-lBall, recycled HW-325u, HW-340u-Analog, recycled HW-125u (dolomite ls poorly represented in drill cuttings)
DST 2] 5265-5275 (Miss. Dolo.)
faint to fair gassy odor, dolomite tan fn xln and some sucrosic with assoc. opdlites, bright even gold fluor wet and dry, small and fair shows clear live oil, few gassy, spid tan stain with FAST CUT, ONE PC, dolomitized oolitic ls with med-coarse oolites exhibiting well dev. interool. porositiv. dull spid fluor wet and dry, fast cut
[dolomite represented in drill cuttings VERY POOR]
NO SIGNIFICANT GAS INCREASE IN THE INTERVAL 5265-5275 - Background Gas running an average of HW-1300 units

7am Wed 12-7-16
5265-CTCH A/DST 1
CFS-90

7am Wed 12-7-16
5265-CTCH A/DST 2
CFS-90

10"

5300

Is cream fn-med oolitic, weathered, chalk 5%, chert lt gry, fresh, subopaque and opaque, fossilif 1-3%

Is cream vfn-med oolitic, lesser ls tan fn xln dn, assoc. chert tan med oolitic, opaque and lt gry, fresh, subopaque, chalk 5%+

CFS-90

7am Thur. 12-8-16
5331 - TOOH f/Logs

DST 1] 5212-5265 (Miss. Dolo.)
[30-60-60-120]
GTS/5" 2nd opening gauge
38.7 MCFG - 64.0 MCFG
REC: 4859' Gas in Pipe
30' Gas Cut Mud
(20% gas, 80% mud)
310' Gassy Oil Cut Mud
(10% gas, 10% oil, 80% mud)
340' - Total Fluid - ALL in Drill Pipe
IFF: 62-88, FFP: 109-190
BHP: 736-731
SHT at 5265 - 1 deg. dev.
Pipe Strap at 5265 - 2.99 long to board
DST 3] 5265-5275 (Miss. Dolo.)
[45-60-60-120]
GTS/14' 2nd open gauging gas
20" thru 60" gauge 20.190 MCFG
Rec: 5081' Gas in Pipe
57' Gassy Oil Cut Mud
(30% gas, 20% oil, 50% mud)
124' Gassy Oil Cut Mud
(10% gas, 20% oil, 70% mud)
181' - Total Fluid - All in Drill Pipe
IFF: 41-51, FFP: 47-83
BHP: 764-763