

KIM B. SHOEMAKER

CONSULTING GEOLOGIST

316-684-9709 * WICHITA, KS

GEOLOGIST'S REPORT

DRILLING TIME AND SAMPLE LOG

COMPANY L. D. DRILLING, INC.
LEASE # 1-5 SHIELDS
FIELD WILDCAT
LOCATION 1298' FNL & 1825 FEL
SEC 5 TWP 6s RGE 38w
COUNTY SHERMAN STATE KANSAS
OPERATOR L. D. DRILLING, INC.
SPW 2-16-17 COMP 2-27-17
WID 5164 LTD 5163
MUD UP 3567 TYPE MUD CHEMICAL

ELEVATIONS
KB 3547
DF
GL 3542
Measurements Are All From 3547 KB
CASING
SURFACE 8 5/8" @ 445'
PRODUCTION
ELECTRICAL SURVEYS
DUAL Ind, DENS-N, MICRO

SAMPLES SAVED FROM 3980 TO 5164
DRILLING TIME KEPT FROM 3900 TO 5164
SAMPLES EXAMINED FROM 3980 TO 5164
GEOLOGICAL SUPERVISION FROM 4100 TO 5164
GEOLOGIST ON WELL KIM B. SHOEMAKER

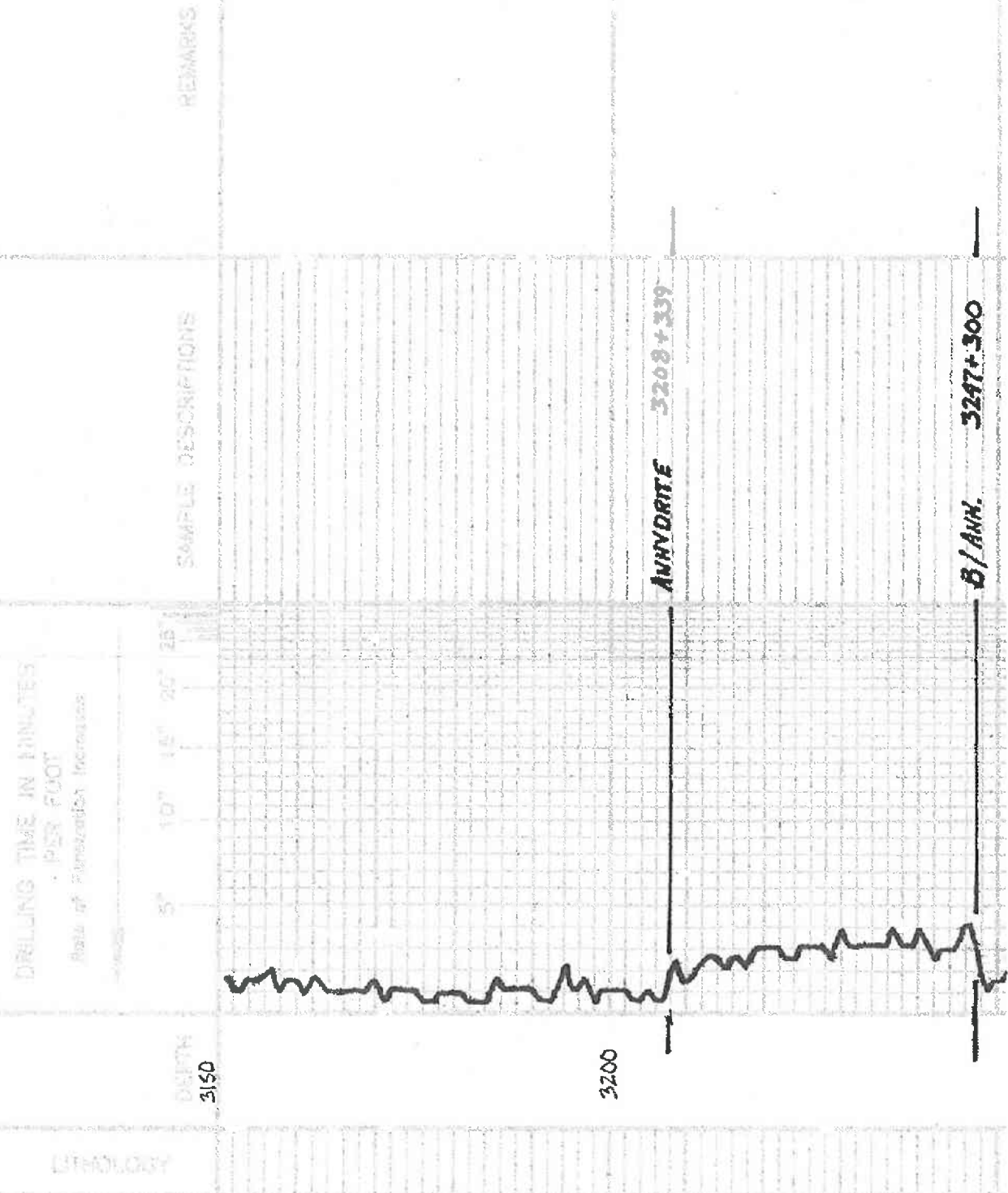
FORMATION TOPS	LOG	SAMPLES
ANHYDRITE	3204-343	3208+339
B/ANN.	3244+303	3247+300
HEEBNER	4320-773	4323-776
LANSING	4375-828	4376-829
B/KC	4657-1110	4662-1115
PAYNEE	4781-1234	4778-1231
FORT SCOT	4812-1295	4813-1296
CHEROKEE	4871-1324	4871-1327
MISSISSIPPI	5104-1557	5102-1555

API: 15-181-20606

- REMARKS:
2-16-17-5900
2-17 @ 446'
2-18 @ 1795'
2-19 @ 2683'
2-20 @ 3315'
2-21 @ 3896'
2-22 @ 4317'
2-23 @ 4550'
2-24 @ 4620'
2-25 @ 4785'
2-26 @ 4984'
2-27 @ 5164'

LEGEND

- Anhydrite
- B/Ann.
- Heebner
- Lansing
- B/KC
- Payne
- Fort Scott
- Cherokee
- Mississippi
- Dolomite
- Flint
- Cut-Lima
- Unconsol.
- Sand at
- Shale
- Sandstone
- Silt
- Sandstone



3300

3900

4000

4100

Vis: 60
WT: 8.8
WL: 64
CHL: 1400

Samples are Logged

Sh. Lt Blue

15... To V.S.H. Foss. X. Dark Sil.

Sh. Rd.

15. To G. Sil. Foss

Sh. Rd. Silty Silty

15. G. Sil. Foss.

Sh. G.

15. To Lt. V.S.H. Foss. V.S.H. A

Sh. Rd.

15. To V.S.H. Foss.

Sh. Rd.

15. To G. Sil. Foss. Sil. Cherty.

Sh. Rd.

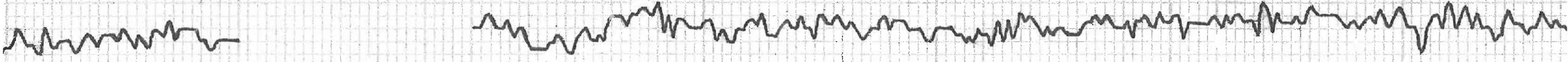
15. To Lt. Sil. Foss. V.S.H. Cherty.

15. To Lt. Foss. Road.

Sh. Rd.

15. To Lt. Foss. Sil. A

15. To Lt. Sil. Foss. Sil. Cherty.



Sh. Bl.

LS. To Yellow VSI Foss.

LS. To G. St. Foss.

Sh. Rd.

LS. To LG. VSI Chalk.

LS. To Red Foss. od. Colentic

LS. wt. VSI Foss. St. Chalk.

LS. wt. Foss. Colentic

Sh. Red. Blk.

LS. To LG. VSI Foss.

Sh. LG. Blue.

Sh. Red. Blk. To LG. VSI Foss.

LS. Bl. St. Foss.

Sh. Red. Blk.

Sh. Red. Blk.

LS. To wt. VSI Foss.

LS. VSI Chalk. Bl. Foss.

HEBNER 4323-776

Sh. Red. Blk.

Sh. Blk. Foss.

Sh. Red. Blk. To wt. VSI Foss. Bl. Foss.

Sh. Red. Blk.

TORONTO

LS. To Foss. VSI Chalk. Foss. Bl. Foss. To wt. VSI Foss. Bl. Foss. To Floor No. 1000

Sh. Red. Blk.

LANSING 4376-829

LS. wt. Foss. VSI Chalk.

LS. wt. St. Foss. St. Chalk. VSI Foss.

Sh. Red.

Sh. Red.

LS. wt. Foss. VSI Chalk. Foss. Bl. Foss. To wt. VSI Foss. Bl. Foss. To Floor No. 1000

Sh. Red.

LS. wt. LG. Foss. St. Foss. St. Chalk. VSI Foss.

LS. Bl. St. Foss.

Sh. Red. Blk.

Sh. Red. Blk.

Sh. Red. Blk. To wt. VSI Foss. Bl. Foss. To Floor No. 1000

LS. wt. LG. St. Foss. St. Chalk.

4200

4300

4400

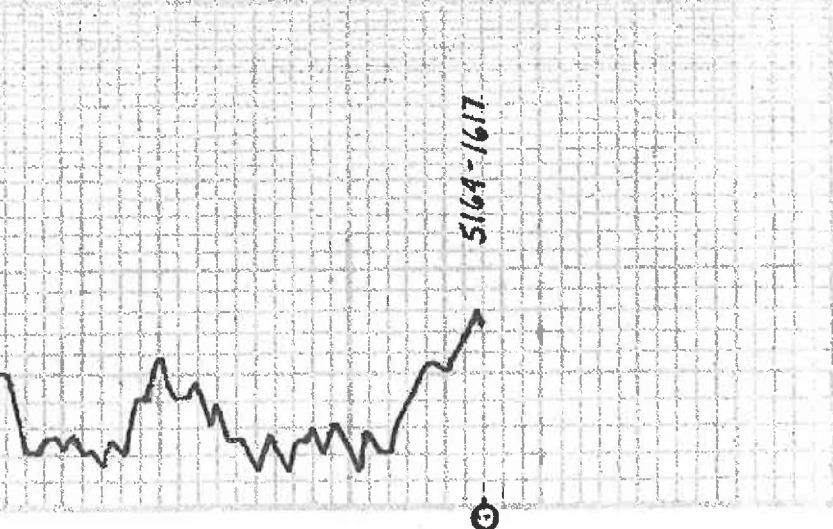
V206 VIS: 59

V15: 91

WL: 8.0

CAK: 2000

Pol. ul. (Fash) Soc. ul. - Pol. ul.
45. ul. Fash. SIA Colenti
Pol. ul. Fash. Soc. NBI Claucaotic
Pol. ul. V Fash Soc.
45. Yellow. SIA Soc. SIA SIA Colenti



Handwritten notes or scribbles at the bottom of the page.