

GEOLOGIST'S REPORT

DRILLING TIME AND SAMPLE LOG

**SUEMAUR
EXPLORATION & PROD. , LLC**

**SCHROEDER #2-26
SEC. 26 TWP 6S RGE 28W
NE SW NW SE**

**1665' FSL & 2306' FEL
SHERIDAN COUNTY, KANSAS
API: 15-179-21433-00-00**

ELEVATION
KB: 2724
GL: 2719
LOG MEASURED
FROM: KB
NOTE: Location GL raised 1 ft.

SURFACE CASING
8 5/8" Set @303' w/ 270SX

PRODUCTION CASING

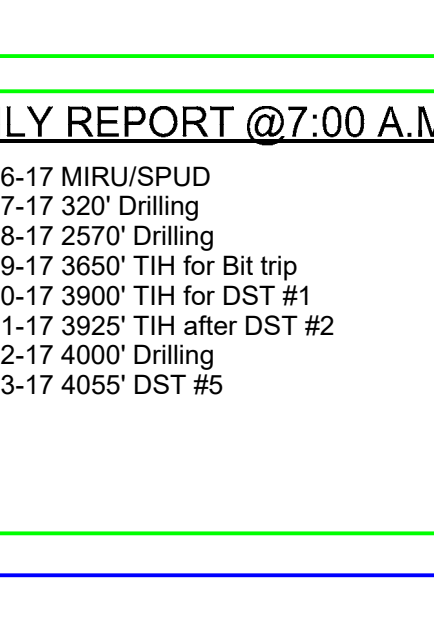
**DRILLING CONTR.: MURFIN RIG #7
SPUD: 03-16-2017 COMP: 03-xx-2017
MUD UP: 3074' TYPE MUD: CHEM.
DRILL TIME: 3300' to RTD
RTD: 4200' LTD:xxx
SAMPLES SAVED: 3350 to RTD
GEOLOGIST: ROBERT J. PETERSEN**

WELL LOG SURVEYS
WEATHERFORD
Hi-Res AIL-DNL-ML-GR-SP

SAMPLE LOG TOPS

Formation	Sample top	Datum	Ref.A	Ref.B	Ref.C
Stone Corral	2456	+268	-1	0	+3
Base Stone Corral	2489	+235	-2	+2	+1
Foraker	3360	-636	-15	-15	-14
Stotler	3525	-801	-13	-11	-10
Howard	3601	-877	-13	-10	-8
Topeka	3643	-919	-7	-4	-1
Oread	3803	-1079	-7	-6	-8
Heebner	3846	-1122	-8	-9	-9
Toronto	3872	-1146	-8	-8	-9
Lansing	3887	-1163	-8	-9	-9
C Zone	3919	-1195	-9	-10	-10
G Zone	3969	-1245	-7	-10	-10
Muncie Cr.	3997	-1273	-8	-12	-12
H Zone	4008	-1284	-8	-9	-9
Stark	4051	-1327	-7	-9	-9
K Zone	4066	-1342	-6	-10	-10
L Zone	4084	-1360	-8	-6	-7
BKC	4093	-1369	-6	-7	-7
RTD	4200	-1476	-6	-4	-4

LOCATION MAP



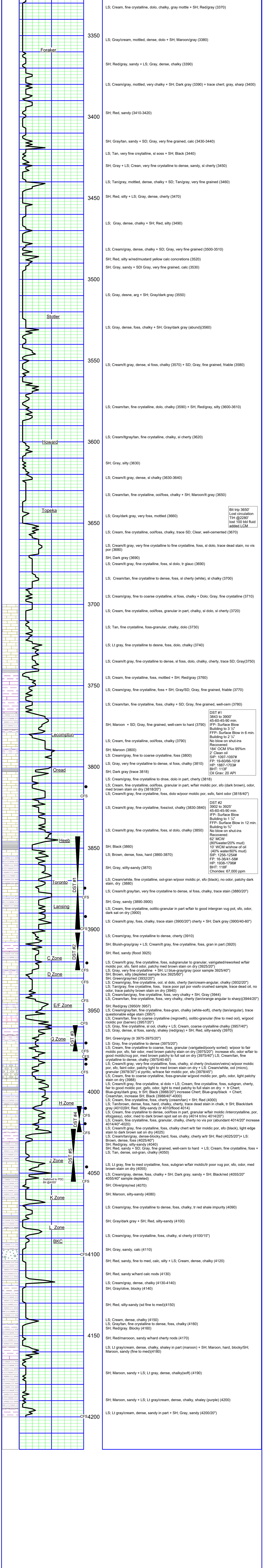
REFERENCE WELLS

REF. A	REF. B	REF. C
API 15-179-21414-00-00 Suenaur Exploration & Prod. Co Schroeder #1-26 365' FSL & 2246' FEL 26-6-28W Sheridan County, KS	API 15-179-21419-00-00 Suenaur Exploration & Prod. Co Shawn Sprester Trust #1-26 578' FSL & 1837' FWL 26-6-28W Sheridan County, KS	API 15-179-21422-00-00 Suenaur Exploration & Prod. Co Sprester Trust #2-26 1897' FSL & 1137' FWL 26-6-28W Sheridan County, KS

DAILY REPORT @7:00 A.M.

03-16-17 MIRU/SPUD
03-17-17 320' Drilling
03-18-17 2570' Drilling
03-19-17 3650' TIH for Bit trip
03-20-17 3900' TIH for DST #1
03-21-17 3925' TIH after DST #2
03-22-17 4000' Drilling
03-23-17 4055' DST #5

REMARKS AND RECOMMENDATIONS



Bit trip 3650'
Lost circulation
TIH @2280'
lost 100 bbl fluid
added LCM.

DST #1
3843 to 3900'
45-60-45-90 min.
IFP- Surface Blow
Building to 3 1/2"
FFP- Surface Blow in 6 min.
Building to 2 1/4"
No blow on shut-ins
Recovered:
184' OCM 5%w/ 95%
m 2' Clean oil
SIP: 1097-1097#
FP: 19-30/41-50#
HP: 1938-1706#
BHT: 113F
Oil Grav: 20 API

DST #2
3902 to 3925'
45-60-45-90 min.
IFP- Surface Blow
Building to 1 1/2"
FFP- Surface Blow in 12 min.
Building to 3 1/2"
No blow on shut-ins
Recovered:
62' MCW
(80%water/20% mud)
10' WCM w/shov of oil
(40% water/60% mud)
SIP: 1256-1254#
FP: 15-30/41-50#
HP: 1938-1706#
BHT: 118F
Chlorides: 67,000 ppm

DST #3
3925 to 3925'
45-60-45-90 min.
IFP- Surface Blow
Building to 1 1/2"
FFP- Surface Blow in 12 min.
Building to 3 1/2"
No blow on shut-ins
Recovered:
62' MCW
(80%water/20% mud)
10' WCM w/shov of oil
(40% water/60% mud)
SIP: 1256-1254#
FP: 15-30/41-50#
HP: 1938-1706#
BHT: 118F
Chlorides: 67,000 ppm

DST #4
3925 to 3925'
45-60-45-90 min.
IFP- Surface Blow
Building to 1 1/2"
FFP- Surface Blow in 12 min.
Building to 3 1/2"
No blow on shut-ins
Recovered:
62' MCW
(80%water/20% mud)
10' WCM w/shov of oil
(40% water/60% mud)
SIP: 1256-1254#
FP: 15-30/41-50#
HP: 1938-1706#
BHT: 118F
Chlorides: 67,000 ppm

DST #5
3925 to 3925'
45-60-45-90 min.
IFP- Surface Blow
Building to 1 1/2"
FFP- Surface Blow in 12 min.
Building to 3 1/2"
No blow on shut-ins
Recovered:
62' MCW
(80%water/20% mud)
10' WCM w/shov of oil
(40% water/60% mud)
SIP: 1256-1254#
FP: 15-30/41-50#
HP: 1938-1706#
BHT: 118F
Chlorides: 67,000 ppm