

# GEOLOGIC REPORT

## DAVID J. GOLDAK

WICHITA, KANSAS  
Scale 1:240 (5"=100') Imperial  
Measured Depth Log

Well Name: Dinges Trust #1  
Location: Section 13 - T18S - R25W  
License Number: API: 15-135-25941  
Spud Date: 02 / 17 / 2017  
Surface Coordinates: 1640' FSL and 335' FWL  
Approx. SE - SW - NW - SW  
Region: Ness Co., KS  
Drilling Completed: 02 / 24 / 2017  
Bottom Hole Coordinates:  
Ground Elevation (ft): 2372' K.B. Elevation (ft): 2377'  
Logged Interval (ft): 3500' To: 4440' Total Depth (ft): 4440'  
Formation: Mississippian  
Type of Drilling Fluid: Chemical - Mud Co

Printed by MUD.LOG from WellSight Systems 1-800-447-1534 www.WellSight.com

### OPERATOR

Company: Stewart Producers, Inc.  
Address: PO Box 546  
Mt Vernon, IL 62864

### GEOLOGIST

Name: David J. Goldak  
Company: D. J. GOLDAK, INC.  
Address: 12427 W Ridgepoint Cir  
Wichita, Kansas 67235

### General Info

CONTRACTOR: WW Drilling, Rig #2

#### BIT RECORD:

No.	Size	Make	Jets	Out	Feet	Hours
1	12-1/4	Smith MT	4-15s	208	208	3.00
2	7-7/8	Smith-F27	3-15s	4440	4232	104.25

SURVEYS: 208'-0.75, 4284'-2.75, 4440'-2.00

#### GENERAL DRILLING & PUMP INFORMATION:

Drilling with 16 collars (6.25"x2.25"): 477.14  
Drilling with 35,000-37,000 lbs on bit and 70-75 RPM.  
Pumping 60 S/M; 7.74 B/M; and 800 psi at the Standpipe.

## Daily Status

02/17/17 - Spud at 10:30 AM; Set 8-5/8" Csg at 208'  
 02/18/17 - 802' Drilling  
 02/19/17 - 2,512' Drilling  
 02/20/17 - 3,278' Drilling; Displace @ 3,431'  
 02/21/17 - 3,903' Drilling  
 02/22/17 - 4,231' Wiper trip; DST #1 @ 4,284'  
 02/23/17 - 4,353' Drilling; DST #2 @ 4,368'  
 02/24/17 - 4,440' Logging

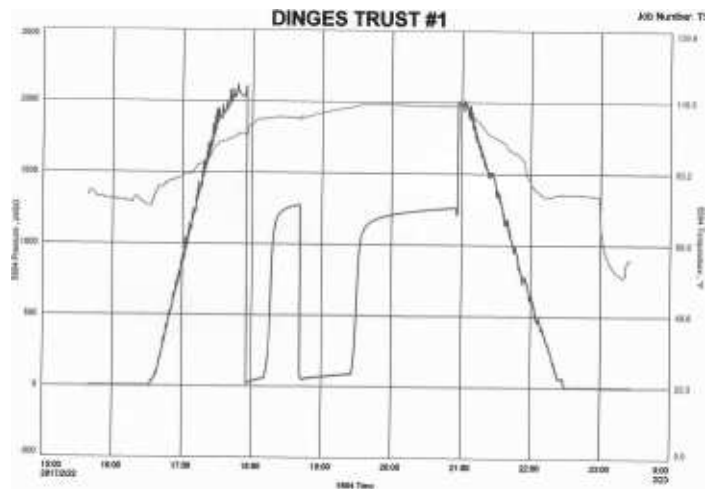
	Log Tops	Sample Tops
Anhydrite	1637 (+740)	1644 (+733)
Base/Anhy	1673 (+704)	1681 (+696)
Heebner	3718 (-1341)	3720 (-1343)
Lansing	3759 (-1382)	3761 (-1384)
Stark Sh	4033 (-1656)	4038 (-1661)
BKC	4095 (-1718)	4096 (-1719)
Pawnee	4184 (-1807)	4192 (-1815)
Ft Scott	4257 (-1880)	4258 (-1881)
Cherokee	4282 (-1905)	4284 (-1907)
Mississippian	4358 (-1981)	4347 (-1970)
Total Depth	4440 (-2063)	4440 (-2063)

**DST #1: 4,250' - 4,284' (Ft Scott)**  
 15" - 30" - 45" - 90"

**IF:** Good blow building to BOB in 10 minutes  
**ISI:** Weak surface blow back  
**FF:** Good blow building to BOB in 5 minutes  
**FSI:** Blow back building to 1/2 inch

**RECOVERY:** 1105' GIP & 215' Total Fluid, consisting of:  
 5' GO (1% G & 99% O); Gravity: 41 API  
 25' G&MCO (1% G, 58% O & 41% M)  
 125' GW&MCO (33% G, 44% O, 12% W & 11% M)  
 60' GO&MCW (38% G, 10% O, 34% W & 18% M)  
 Chlorides Recovery: 38,000 ppm

SIP: 1274-1260; FP: 16-55, 51-89; HP: 2028-2016; BHT: 116

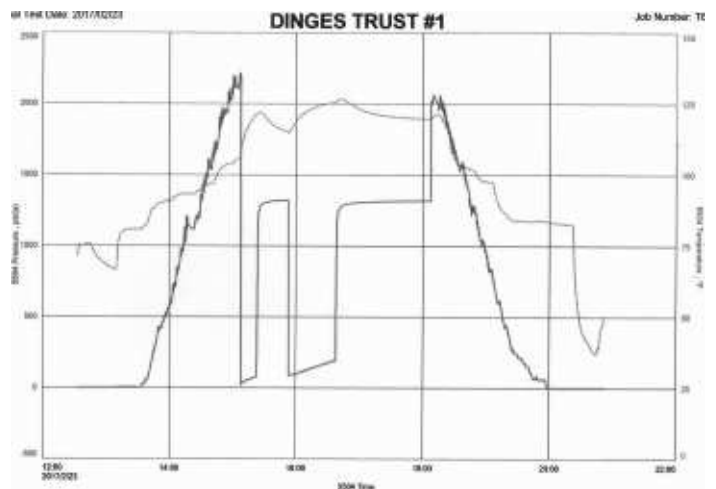


**DST #2: 4,354' - 4,368' (Mississippian)**  
 15" - 30" - 45" - 90"

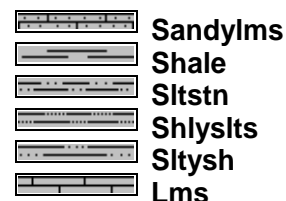
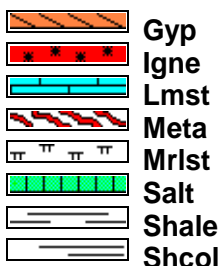
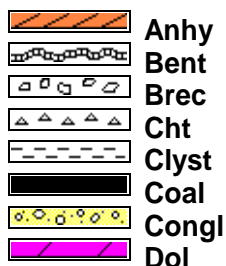
**IF:** Good blow building to BOB in 10 minutes  
**ISI:** Blow back building to 1 inch  
**FF:** Good blow building to BOB in 13 minutes  
**FSI:** Weak surface blow back

**RECOVERY:** 360' GIP & 515' Total Fluid, consisting of:  
 430' GO (7% G & 93% O); Gravity: 38 API  
 85' G&MCO (10% G, 76% O & 14% M)

SIP: 1320-1318; FP: 22-78, 87-195; HP: 2103-2067; BHT: 127



## ROCK TYPES

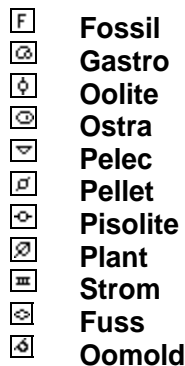
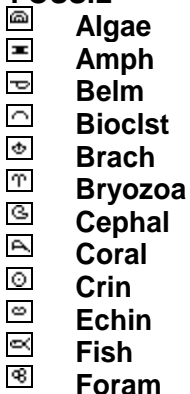


## ACCESSORIES

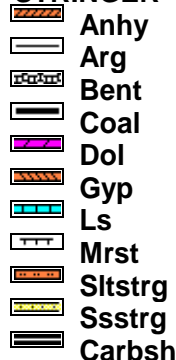
### MINERAL



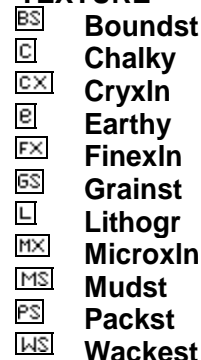
### FOSSIL



### STRINGER

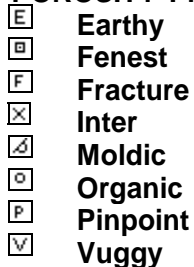


### TEXTURE



## OTHER SYMBOLS

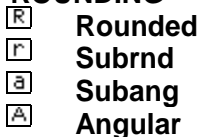
### POROSITY TYPE



### SORTING



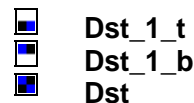
### ROUNDING



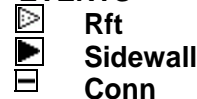
### OIL SHOWS


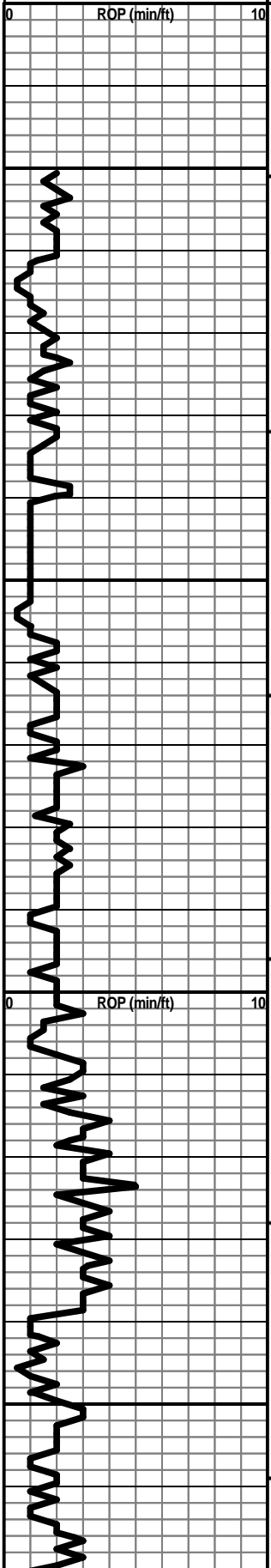


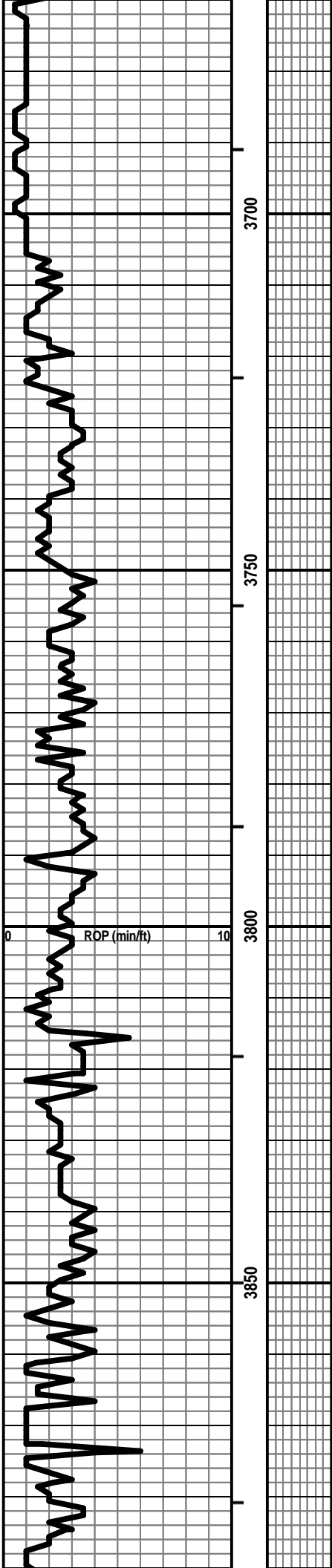
### INTERVALS



### EVENTS



<p>Curve Track 1</p> <p>ROP (min/ft) </p>	<p>Depth</p>	<p>Porosity</p>	<p>Lithology</p>	<p>Geological Descriptions</p>	<p>Remarks</p>
	<p>0</p> <p>10</p> <p>3500</p> <p>3550</p> <p>3600</p> <p>3650</p>	<p>24%</p> <p>18%</p> <p>12%</p> <p>6%</p>	<p>Oil Shows</p>	<p>DRLG WITH BIT #2: 7-7/8" CONV NEW SMITH-F27; JETS: 15-15-15</p> <p>DISPLACE MUD SYSTEM @ 3,431'</p> <p>Vis: 73, Wt: 8.8, LCM: 2#</p> <p>Vis: 67, Wt: 8.7, LCM: 2#</p>	



HEEBNER 3720 (-1343)

LANSING 3761 (-1384)

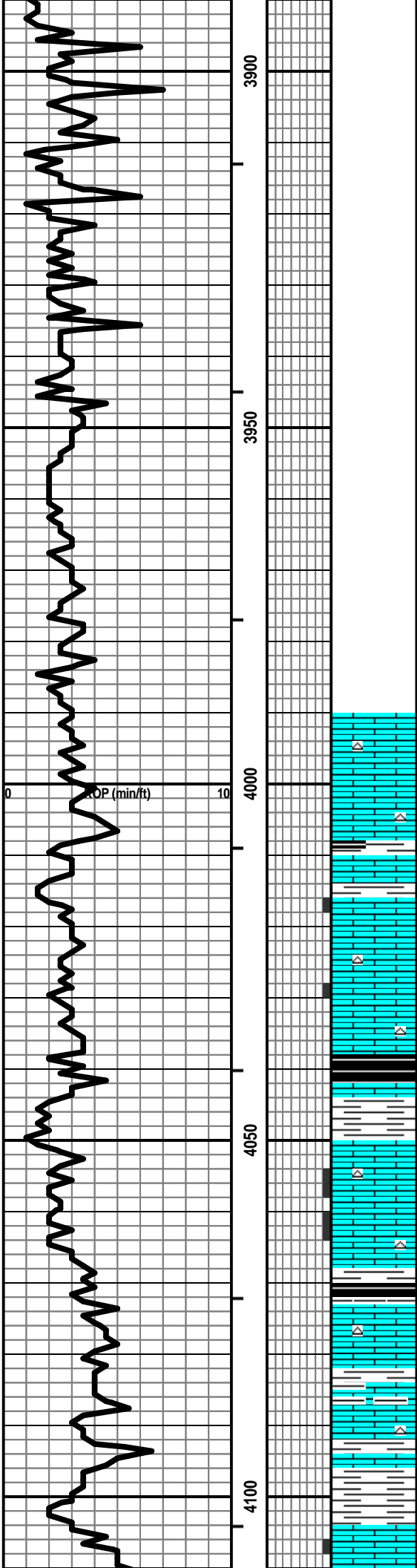
Vis: 62, Wt: 8.7, LCM: 2#

AUTO-DRILLER MALFUNCTIONING

AUTO-DRILLER NOT OPERATING

Vis: 59, Wt: 8.8, YP: 29,  
GelS: 12/20, pH: 11.0, WL: 7.4,  
Chl: 3,700, Sol: 3.4, LCM: 2#

AUTO-DRILLER REPAIRED AND OPERATING



LS - CRM / TAN / GY / SCAT BRN, MOT IN PT, VF / F XLN, OOL IN PT, SL FOSS, SUBCHKY IN PT, PRED DNS, NS W/ CHT - GY / WHT

LS - CRM / TAN, F XLN, SCAT REXLN CALC, OOL, P / INTOOL / INTXLN POR, NS W/ SH - GY / BLK

LS - TAN / GY / SCAT CRM + BRN, MOT IN PT, OOL IN PT, SCAT P INTOOL / INTXLN POR, PRED DNS, NS W/ CHT - GY / TAN

SH - BLK W/ SCAT LS - TAN, F XLN, PRED DNS, NS SH - GY / SCAT GRN

LS - CRM / TAN / BRN, F XLN, SCAT REXLN CALC, OOL IN PT, SCAT PINTXLN / INTOOL POR, NS W/ CHT - GY / WHT / TAN

SH - GY / BLK

LS - BRN / TAN, VF / F XLN, FOSS IN PT, SUBCHKY IN PT, PRED DNS, NS W/ CHT - GY / WHT

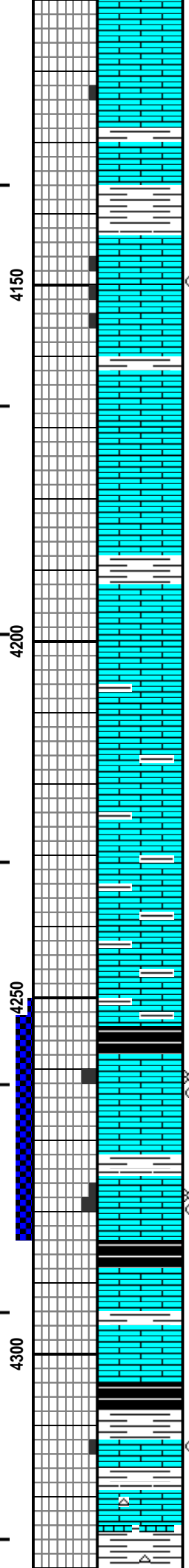
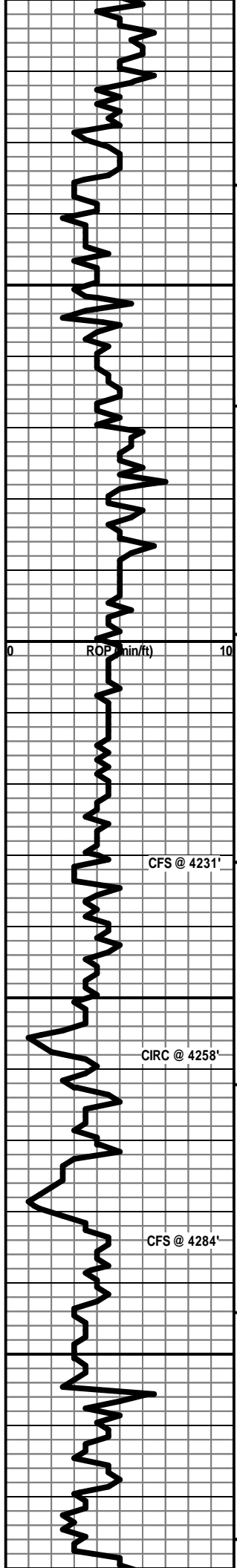
LS - BRN / TAN / GY, VF / F XLN, OOL IN PT, SL FOSS, PRED DNS, NS W/ SCAT CHT - GY / WHT W/ MOD AMT SH - GY / GRN

LS - CRM / WHT / TAN, VF / F XLN, FOSS IN PT, TR P

**STARK SHALE 4038 (-1661)**

Vis: 56, Wt: 9.1, LCM: 2#

**BASE OF KC 4096 (-1719)**



FOSSMOLD POR, PRED DNS, NS

LS - PRED CRM / TAN, SCAT WHT, VF / F XLN, FOSS + OOL IN PT, TR INTPART + PPPT POR, PRED DNS, TR STN, NSFO, NO ODOR

LS - TAN / CRM, VF / F XLN, SCAT CRYPTO XLN, FOSS IN PT, SUBCHKY / DNS, NS W / SH - GY

LS - CRM / TAN, F / SCAT M XLN, OOL, SCAT VUG + PPT POR, P / F SHOW ASPH + STN, NSFO, V FT ODOR

LS - CRM / TAN / GY, F / VF XLN, OOL IN PT, TR PVUG POR, TR ASPH + SPTY STN, NSFO, NO ODOR

LS - TAN / CRM / GY, MOT IN PT, F / VF XLN, OOL IN PT, SL FOSS, SCAT SUBCHKY, PRED DNS, NS

LS - PRED BRN / TAN, SCAT CRM, VF / F XLN, SCAT REXLN CALC, CHKY IN PT, PRED DNS, NS

LS - TAN / BRN / CRM, VF / F XLN, CHKY IN PT, PRED DNS, NS W / MOD AMT SH - GY

LS - TAN / BRN / SCAT CRM, VF / F XLN, CHKY IN PT, PRED DNS, NS W / ABNT SH - GY

PRED SH - GY / BLK, CARB IN PT W / LS - TAN / GY, VF XLN, PRED DNS, NS

LS - CRM / TAN, F XLN, OOL IN PT, SCAT P / TR F VUG POR, SL / F SFO + GB, F ODOR, SPTY STN, G FLUOR + CUT

LS - CRM / TAN, F XLN, OOL IN PT, SL FOSS, SCAT P / F VUG POR, SL / F SFO, F / G SGB, F ODOR, PRED SPTY / TR SAT STN, G FLUOR + CUT

SH - BLK / GY, CARB IN PT W / LS - TAN / CRM / BRN, MOT IN PT, VF / F XLN, FOSS IN PT, SL OOL, CHKY IN PT, PRED DNS, NS

LS - CRM / TAN, VF / F XLN, FOSS IN PT, SCAT OOL, TR P INTXLN POR, PRED DNS, VSSFO, PRED NS, FT ODOR, TR SPTY STN

LS - TAN / CRM / SCAT BRN, F / SCAT M XLN, SCAT REXLN CALC, SL FOSS, DNS W / CHT - TAN / GY / SCAT ORG

Vis: 54, Wt: 9.2, LCM: 1#

**PAWNEE 4192 (-1815)**

WIPER TRIP 41 STANDS @ 4,231'

Vis: 60+, Wt: 8.9, YP: 24,  
GelS: 11/15, pH: 11.0, WL: 7.2,  
Chl: 3,700, Sol: 4.2, LCM: 2#

CIRC TO REPAIR  
ROTARY CHAIN @ 4,258'

**FT SCOTT 4258 (-1881)**

PIPE STRAP @ 4,284': SHORT 1.66'

**CHEROKEE SH 4284 (-1907)**

DST #1: 4,250' - 4,284' (Ft Scott)  
15" - 30" - 45" - 90"

IF: Good blow bldg to BOB in 10 min.  
ISi: Weak surface blow back  
FF: Good blow bldg to BOB in 5 min.  
FSI: Blow back bldg to 1/2 in.

RECOVERY: 1105' GIP & 215' Total Fluid:  
5' GO (1% G & 99% O)  
25' GMO (1% G, 58% O, 41% M)  
125' GWMO (33% G, 44% O, 12% W, 11% M)  
60' GOMW (38% G, 10% O, 34% W, 18% M)  
Oil Gravity: 41 API

Chlorides Recovery: 38,000 ppm

SIP: 1274-1260  
FP: 16-55, 51-89

HP: 2028-2016  
BHT: 116

### MISSISSIPPIAN 4347 (-1970)

Vis: 58, Wt: 9.2, YP: 29,  
GelS: 14/19, pH: 11.0, WL: 7.8,  
Chl: 3,800, Sol: 6.3, LCM: 2#

DST #2: 4,354' - 4,368' (Mississippian)  
15" - 30" - 45" - 90"

IF: Good blow bldg to BOB in 10 min.  
ISI: Blow back bldg to 1 in.  
FF: Good blow bldg to BOB in 13 min.  
FSI: Weak surface blow back

RECOVERY: 360' GIP & 515' Total Fluid:  
430' GO (7% G & 93% O)  
85' GMO (10% G, 76% O, 14% M)  
Oil Gravity: 38 API

SIP: 1320-1318  
FP: 22-78, 87-195

HP: 2103-2067  
BHT: 127

Vis: 53, Wt: 9.2, YP: 26,  
GelS: 10/15, pH: 10.5, WL: 6.8,  
Chl: 3,600, Sol: 6.3, LCM: 2#

### TOTAL DEPTH 4440 (-2063)

