



# Musgrove

Petroleum Geology  
212 Main Street, Claflin KS

## NOTES

Company: Blue Ridge Petroleum Corp

Lease: McMillian #1-14

Location: W2-SW-SE-NW (2310' FNL & 1381' FWL)

Sec: 14 Twsp: 23S Rge: 4W

County: Reno State: Kansas

Field: Burton

KB: 1484' GL: 1476'

Contractor: Southwind Drilling, Inc. (Rig #3)

Spud: 03/08/2017 Comp: 03/14/2017

RTD: 3865' LTD: 3367'

Mud Up: 2200' Type Mud: Chemical

API #: 15-155-21744-00-00

Samples Saved From: 2300' to RTD

Drilling Time Kept From: 2300' to RTD

Samples Examined From: 2300' to RTD

Geological Supervision from: 2300' to RTD

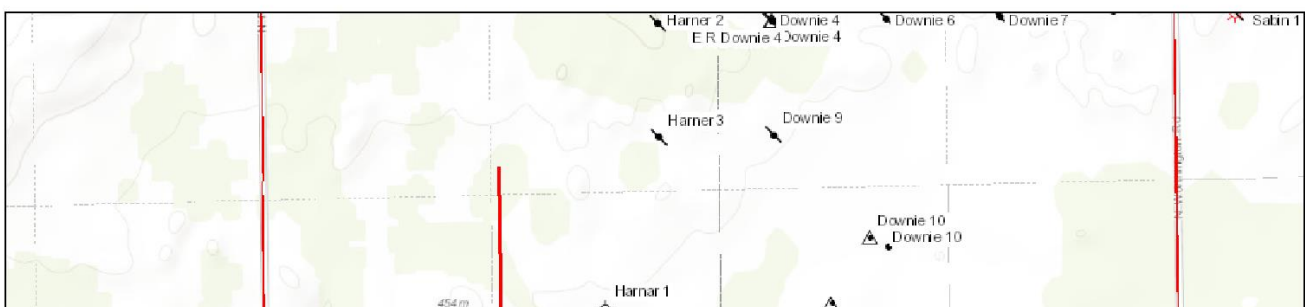
Geologist on Well: Jim Musgrove

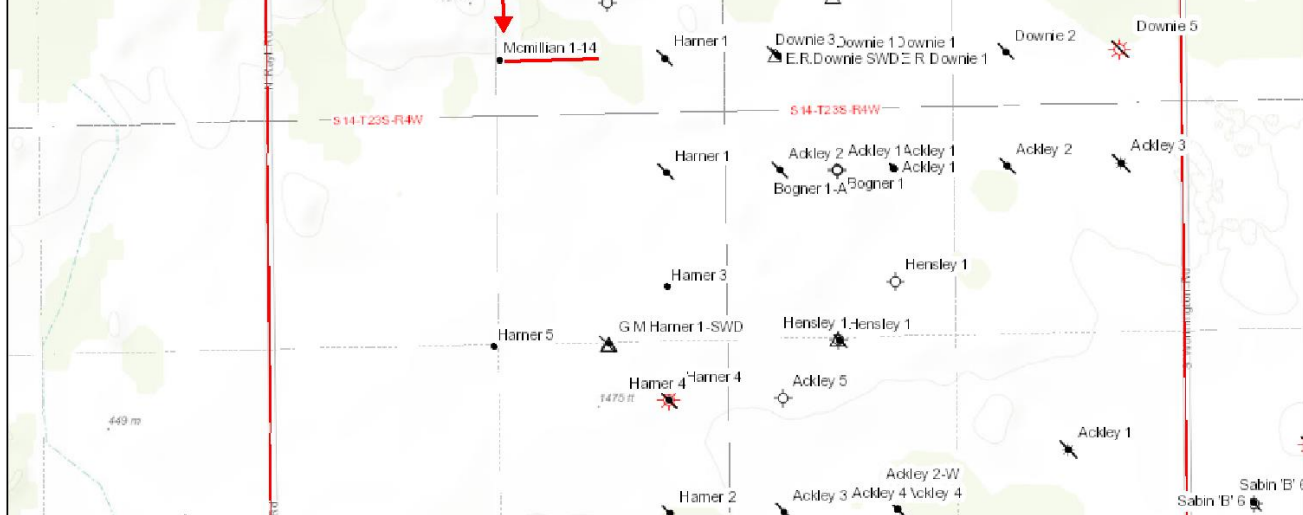
Surface Casing: 8 5/8" @ 217'

Production Casing: None

Electronic Surveys: Logged by ELI, DIL, CDL/CNL, PE

## BlueRidge Petroleum-McMillian #1-14





March 15, 17

# BlueRidge Petroleum

## well comparison sheet

DRILLING WELL					COMPARISON WELL				
BlueRidge-McMillian #1-14					Bergman Oil- #1 Harnar				
W2-SW-SE-NW 14-23S-4W					C-SE-NW 14-23S-4W				
1484 KB					1481 KB			Structural Relationship	
Formation	Sample	Sub-Sea	Log	Sub-Sea	Log	Sub-Sea	Sample	Log	
Heebner	2360	-876	2363	-879					
Douglas	2414	-930	2413	-929					
Brown Lime	2518	-1034	2516	-1032					
Lansing	2539	-1055	2541	-1057	2547	-1066	11	9	
BKC	2998	-1514	2997	-1513	2988	-1507	-7	-6	
Cherokee Sh.	3134	-1650	3132	-1648					
Miss	3263	-1779	3262	-1778	3252	-1771	-8	-7	
Hunton	3601	-2117	3600	-2116	3604	-2123	6	7	
Maquoketa	3624	-2140	3625	-2141					
Viola	3716	-2232	3716	-2232					
Simpson Sand	3741	-2257	3742	-2258					
Lower Sand	3829	-2345	3830	-2346					
Arbuckle	3834	-2350	3835	-2351					
RTD	3865	-2381	3465	-1981	3610	-2129	-252	148	
LTD	3867	-2383	3867	-2383					



**DIAMOND TESTING**  
P.O. Box 157  
HOISINGTON, KANSAS 67544  
(800) 542-7313

TIME ON: 09:11

TIME OFF: 15:40

**DRILL-STEM TEST TICKET**  
FILE: MCMILLIAN1DST1

Company Blue Ridge Petroleum Corp. Lease & Well No. McMillian #1-14  
 Contractor Southwind Drlg Rig # 3 Charge to B.R.P.C.  
 Elevation 1484' KB Formation Mississippi Effective Pay \_\_\_\_\_ Ft. Ticket No. F471  
 Date 3/11/17 Sec. 14 Twp. 23 S Range 4 W County Reno State KANSAS  
 Test Approved By Jim Musgrove Diamond Representative Jake Fahrenbruch

Formation Test No. 1 Interval Tested from 3268 ft. to 3307 ft. Total Depth 3307 ft.  
 Packer Depth 3263 ft. Size 6 3/4 in. Packer depth ----- ft. Size 6 3/4 in.  
 Packer Depth 3268 ft. Size 6 3/4 in. Packer depth ----- ft. Size 6 3/4 in.  
 Depth of Selective Zone Set -----  
 Top Recorder Depth (Inside) 3276 ft. Recorder Number 5951 Cap. 5000 P.S.I.  
 Bottom Recorder Depth (Outside) 3277 ft. Recorder Number 5586 Cap. 5000 P.S.I.  
 Below Straddle Recorder Depth ----- ft. Recorder Number ----- Cap. ----- P.S.I.  
 Mud Type CHEMICAL Viscosity 44 (4# LCM) Drill Collar Length 0 ft. I.D. 2 1/4 in.  
 Weight 9.3 Water Loss 9.6 cc. Weight Pipe Length 0 ft. I.D. 2 7/8 in.  
 Chlorides 1,800 P.P.M. Drill Pipe Length 3,248 ft. I.D. 3 1/2 in.  
 Jars: Make STERLING Serial Number ----- Test Tool Length 20 ft. Tool Size 3 1/2-IF in.  
 Did Well Flow? ----- Reversed Out ----- Anchor Length 39 ft. Size 4 1/2-FH in.  
 Main Hole Size 7 7/8 Tool Joint Size 4 1/2 XH in. Surface Choke Size 1 in. Bottom Choke Size 5/8 in.

Blow: 1st Open: Strong blow @ BOB in 2.5 minutes. No BB.

2nd Open: Strong blow @ BOB in 3.25 minutes. No BB.

Recovered 190 ft. of MCW 80% wtr, 20% mud

Recovered 1,210 ft. of Salt Water 100% wtr

Recovered ----- ft. of -----

Recovered ----- ft. of TOTAL RECOVERED FLUID: 1,400'

Recovered ----- ft. of No G.I.P.

Recovered ----- ft. of -----

Remarks: Chlorides: 185,000 PPM

RW: .10 ohm @ 36 F

PH: 7.0

Price Job
Other Charges
Insurance
Total

Time Set Packer(s) 11:00 A.M. P.M. Time Started Off Bottom 13:30 A.M. P.M. Maximum Temperature 114 F

Initial Hydrostatic Pressure..... (A) 1580 P.S.I.  
 Initial Flow Period..... Minutes 15 (B) 65 P.S.I. to (C) 244 P.S.I.  
 Initial Closed In Period..... Minutes 30 (D) 874 P.S.I.  
 Final Flow Period..... Minutes 45 (E) 261 P.S.I. to (F) 610 P.S.I.  
 Final Closed In Period..... Minutes 60 (G) 873 P.S.I.  
 Final Hydrostatic Pressure..... (H) 1574 P.S.I.



**DIAMOND TESTING**  
 P.O. Box 157  
 HOISINGTON, KANSAS 67544  
 (800) 542-7313

TIME ON: 12:49  
 TIME OFF: 18:54

**DRILL-STEM TEST TICKET**  
 FILE: MCMILLIAN1DST2

Company Blue Ridge Petroleum Corp. Lease & Well No. McMillian #1-14  
 Contractor Southwind Drlg Rig # 3 Charge to B.R.P.C.  
 Elevation 1484' KB Formation Hunton Effective Pay ----- Ft. Ticket No. F472  
 Date 3/12/17 Sec. 14 Twp. 23 S Range 4 W County Reno State KANSAS  
 Test Approved By Jim Musgrove Diamond Representative Jake Fahrenbruch

Formation Test No. 2 Interval Tested from 3603 ft. to 3610 ft. Total Depth 3610 ft.  
 Packer Depth 3598 ft. Size 6 3/4 in. Packer depth ----- ft. Size 6 3/4 in.  
 Packer Depth 3603 SH ft. Size 6 3/4 in. Packer depth ----- ft. Size 6 3/4 in.  
 Depth of Selective Zone Set -----  
 Top Recorder Depth (Inside) 3590 ft. Recorder Number 5951 Cap. 5000 P.S.I.  
 Bottom Recorder Depth (Outside) 3591 ft. Recorder Number 5586 Cap. 5000 P.S.I.  
 Below Straddle Recorder Depth ----- ft. Recorder Number ----- Cap. ----- P.S.I.  
 Mud Type CHEMICAL Viscosity 56 (2# LCM) Drill Collar Length 0 ft. I.D. 2 1/4 in.

Weight 9.6 Water Loss 8.8 cc. Weight Pipe Length 0 ft. I.D. 2 7/8 in  
 Chlorides 1,780 P.P.M. Drill Pipe Length 3,578 ft. I.D. 3 1/2 in  
 Jars: Make STERLING Serial Number Shale Packer Test Tool Length 22 ft. Tool Size 3 1/2-IF in  
 Did Well Flow? ----- Reversed Out ----- Anchor Length 7 ft. Size 4 1/2-FH in  
 Main Hole Size 7 7/8 Tool Joint Size 4 1/2 XH in. Surface Choke Size 1 in. Bottom Choke Size 5/8 in

Blow: 1st Open: Weak blow, increased to 2". No blowback.

2nd Open: No blow, increased to a weak surface blow. No blowback.

Recovered 5 ft. of Drilling mud 100% mud

Recovered      ft. of     

Recovered      ft. of (Oil spots in tools.)

Recovered      ft. of     

Recovered      ft. of     

Recovered      ft. of     

Remarks: Mis-run, suspect bad o-ring in shut in tool.

Price Job

Other Charges

Insurance

Total

Time Set Packer(s) 14:15 A.M. P.M. Time Started Off Bottom 17:15 A.M. P.M. Maximum Temperature 113 F

Initial Hydrostatic Pressure..... (A) 1793 P.S.I.

Initial Flow Period..... Minutes 45 (B) 27 P.S.I. to (C) 41 P.S.I.

Initial Closed In Period..... Minutes 30 (D)      P.S.I.

Final Flow Period..... Minutes 45 (E)      P.S.I. to (F)      P.S.I.

Final Closed In Period..... Minutes 60 (G) 1291 P.S.I.

Final Hydrostatic Pressure..... (H) 1789 P.S.I.



**DIAMOND TESTING**

P.O. Box 157  
 HOISINGTON, KANSAS 67544  
 (800) 542-7313

TIME ON: 01:25

TIME OFF: 08:55

**DRILL-STEM TEST TICKET**  
 FILE: MCMILLIAN1DST3

Company Blue Ridge Petroleum Corp. Lease & Well No. McMillian #1-14

Contractor Southwind Drlg Rig # 3 Charge to B.R.P.C.

Elevation 1484' KB Formation Hunton Effective Pay      Ft. Ticket No. F473

Date 3/13/17 Sec. 14 Twp. 23 S Range 4 W County Reno State KANSAS

Test Approved By Jim Musgrove Diamond Representative Jake Fahrenbruch

Formation Test No. 3 Interval Tested from 3603 ft. to 3617 ft. Total Depth 3617 ft.

Packer Depth 3598 ft. Size 6 3/4 in. Packer depth      ft. Size 6 3/4 in.

Packer Depth 3603 SH ft. Size 6 3/4 in. Packer depth      ft. Size 6 3/4 in.

Depth of Selective Zone Set     

Top Recorder Depth (Inside) 3590 ft. Recorder Number 5951 Cap. 5000 P.S.I.

Bottom Recorder Depth (Outside) 3591 ft. Recorder Number 5586 Cap. 5000 P.S.I.

Below Straddle Recorder Depth      ft. Recorder Number      Cap.      P.S.I.

Mud Type CHEMICAL Viscosity 56 (2# LCM) Drill Collar Length 0 ft. I.D. 2 1/4 in.

Weight 9.6 Water Loss 8.8 cc. Weight Pipe Length 0 ft. I.D. 2 7/8 in

Chlorides 1,780 P.P.M. Drill Pipe Length 3,578 ft. I.D. 3 1/2 in

Jars: Make STERLING Serial Number Shale Packer Test Tool Length 22 ft. Tool Size 3 1/2-IF in

Did Well Flow? ----- Reversed Out ----- Anchor Length 14 ft. Size 4 1/2-FH in

Main Hole Size 7 7/8 Tool Joint Size 4 1/2 XH in. Surface Choke Size 1 in. Bottom Choke Size 5/8 in

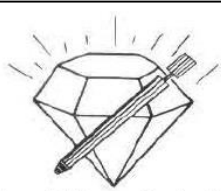
Blow: 1st Open: Strong blow @ BOB in 25 seconds. Blowback @ 2".

2nd Open: Strong blow @ BOB in 30 Seconds. Blowback @ 7".

Recovered 60 ft. of SOCMW 3% oil, 52% wtr, 45% mud

Recovered 180 ft. of **SOS SMCW** <1% oil, >90% wtr, 9% mud  
 Recovered 2,745 ft. of **Salt Water** 100% wtr  
 Recovered \_\_\_\_\_ ft. of \_\_\_\_\_  
 Recovered \_\_\_\_\_ ft. of \_\_\_\_\_ Price Job  
 Recovered \_\_\_\_\_ ft. of **TOTAL RECOVERED FLUID: 2985'** Other Charges  
 Remarks: **Chlorides: 83,000 PPM** Insurance  
**RW: .22 ohm @ 30 F**  
**PH: 7.0** Total

Time Set Packer(s) **02:50** A.M. P.M. Time Started Off Bottom **04:50** A.M. P.M. Maximum Temperature **119 F**  
 Initial Hydrostatic Pressure..... (A) **1772** P.S.I.  
 Initial Flow Period..... Minutes **15** (B) **716** P.S.I. to (C) **1209** P.S.I.  
 Initial Closed In Period..... Minutes **30** (D) **1295** P.S.I.  
 Final Flow Period..... Minutes **30** (E) **1225** P.S.I. to (F) **1300** P.S.I.  
 Final Closed In Period..... Minutes **45** (G) **1305** P.S.I.  
 Final Hydrostatic Pressure..... (H) **1768** P.S.I.



**DIAMOND TESTING**  
 P.O. Box 157  
**HOISINGTON, KANSAS 67544**  
 (800) 542-7313  
**DRILL-STEM TEST TICKET**  
 FILE: **MCMILLIAN1DST4**

TIME ON: **21:32 3/13**  
 TIME OFF: **03:57 3/14**

Company **Blue Ridge Petroleum Corp.** Lease & Well No. **McMillian #1-14**  
 Contractor **Southwind Drlg** Rig # **3** Charge to **B.R.P.C.**  
 Elevation **1484' KB** Formation **Simpson** Effective Pay \_\_\_\_\_ Ft. Ticket No. **F474**  
 Date **3/14/17** Sec. **14** Twp. **23** S Range **4** W County **Reno** State **KANSAS**  
 Test Approved By **Jim Musgrove** Diamond Representative **Jake Fahrenbruch**

Formation Test No. **4** Interval Tested from **3726** ft. to **3744** ft. Total Depth **3744** ft.  
 Packer Depth **3721** ft. Size **6 3/4** in. Packer depth \_\_\_\_\_ ft. Size **6 3/4** in.  
 Packer Depth **3726** ft. Size **6 3/4** in. Packer depth \_\_\_\_\_ ft. Size **6 3/4** in.  
 Depth of Selective Zone Set \_\_\_\_\_

Top Recorder Depth (Inside) **3728** ft. Recorder Number **5951** Cap. **5000** P.S.I.  
 Bottom Recorder Depth (Outside) **3729** ft. Recorder Number **5586** Cap. **5000** P.S.I.  
 Below Straddle Recorder Depth \_\_\_\_\_ ft. Recorder Number \_\_\_\_\_ Cap. \_\_\_\_\_ P.S.I.

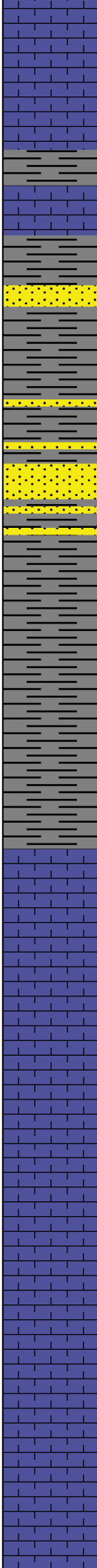
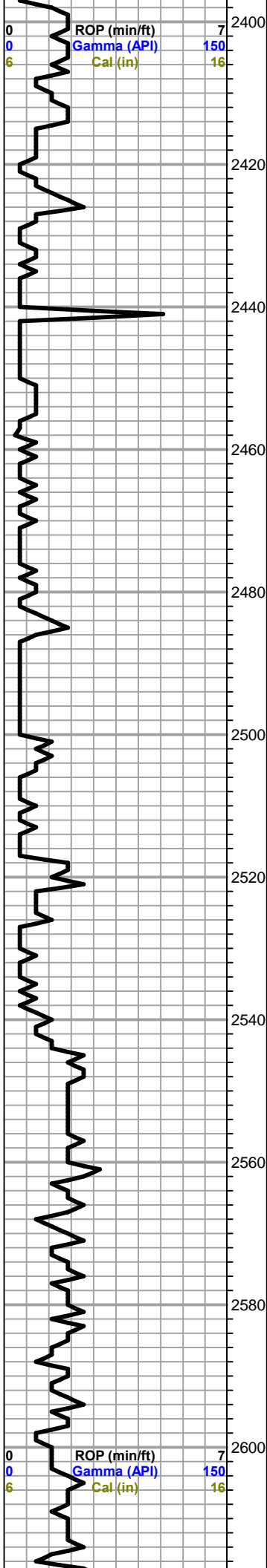
Mud Type **CHEMICAL** Viscosity **52 (4# LCM)** Drill Collar Length **0** ft. I.D. **2 1/4** in.  
 Weight **9.3** Water Loss **8.8** cc. Weight Pipe Length **0** ft. I.D. **2 7/8** in.  
 Chlorides **1,800** P.P.M. Drill Pipe Length **3,701** ft. I.D. **3 1/2** in.  
 Jars: Make **STERLING** Serial Number \_\_\_\_\_ Test Tool Length **25** ft. Tool Size **3 1/2-IF** in.  
 Did Well Flow? \_\_\_\_\_ Reversed Out \_\_\_\_\_ Anchor Length **18** ft. Size **4 1/2-FH** in.  
 Main Hole Size **7 7/8** Tool Joint Size **4 1/2 XH** in. Surface Choke Size **1** in. Bottom Choke Size **5/8** in.

Blow: **1st Open: Blow increased to 7.5". No blowback.**  
**2nd Open: Blow increased to 9". No blowback.**

Recovered **40** ft. of **WCM** **17% wtr, 83% mud**  
 Recovered **125** ft. of **Salt Water** **100% wtr**  
 Recovered \_\_\_\_\_ ft. of **(oil specks in tools)**  
 Recovered \_\_\_\_\_ ft. of \_\_\_\_\_  
 Recovered \_\_\_\_\_ ft. of **TOTAL RECOVERED FLUID: 165'** Price Job  
 Recovered \_\_\_\_\_ ft. of \_\_\_\_\_ Other Charges  
 Remarks: **Chlorides: 58,500 PPM** Insurance  
**RW: .30 ohm @ 30 F**  
**PH: 7.0** Total

Time Set Packer(s) **23:15** A.M. P.M. Time Started Off Bottom **02:15** A.M. P.M. Maximum Temperature **119 F**





LS, gry, foss, chalky

**Douglas 2413.0 (-929.0)**

Sh, gry, black, green

LS, tan, few foss, slightly cherty (dense), tr. pyrite

Tr. sd. white, clear, vfg, cal, friable, fair visible porosity, no shows

Sd. white, gry, vfg, sub rounded, friable, well sorted, mica, fair IG porosity (barren)

Sh, gry, dk gry

**Brown Lime 2518.0 (-1034.0)**

LS, tan, brown, fxl, slightly cherty, (dense)

**Lansing 2539.0 (-1055.0)**

LS, white, gry, foss, few chalky, scattered porosity, no shows

LS, tan, foss, scattered porosity, few cherty in part, no shows

LS, gry, white, mottled, chalky, no shows

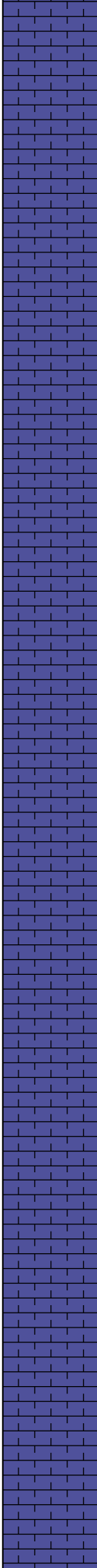
LS, white, gry, sub oom, chalky, poor visible porosity, and gry white chert

LS, white, gry, sub oom, chalky, poor visible porosity

0	Total Gas (units)	100
0	C1 (units)	100
0	C2 (units)	100
0	C3 (units)	100
0	C4 (units)	100

0	Total Gas (units)	100
0	C1 (units)	100
0	C2 (units)	100
0	C3 (units)	100
0	C4 (units)	100

2620  
2640  
2660  
2680  
2700  
2720  
2740  
2760  
2780  
2800  
2820



LS, white, gry, sub oom, chalky, poor visible porosity, and gry, white, chert

LS, white, gry, oom, sub oom, chalky, poorly developed, and white, gry, cherts

LS, gry, white, fxl, foss, gran., fair visible porosity, plus gry, dense ls

LS, a/a, no shows

LS, tan, gry, foss, fxl, scattered p.p. porosity, no shows

LS, white, cream, oom, fair oom porosity, no shows  
Few tan, highly foss, LS, poor visible porosity, plus white, gry cherts

LS, tan, brown, cherty (dense)

LS, white, tan, few ool, oom, good oom porosity

LS, white, scattered porosity, chalky, no shows

LS, white, gry, chalky in pts, few cherty (dense)

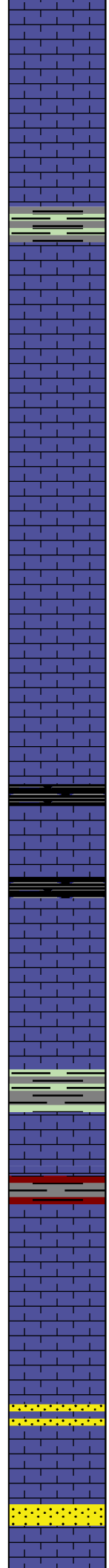
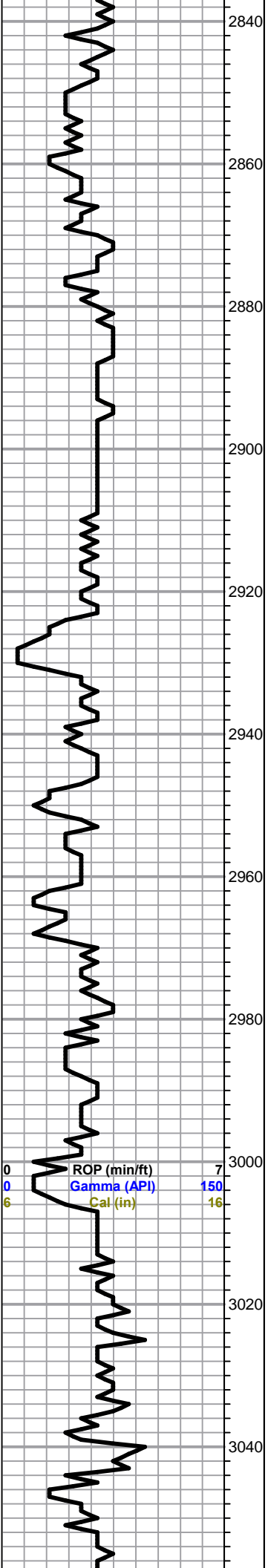
ROP (min/ft) 7  
Gamma (API) 150  
Cal (in) 16

0 Total Gas (units) 100  
0 C1 (units) 100  
0 C2 (units) 100  
0 C3 (units) 100  
0 C4 (units) 100



2840  
2860  
2880  
2900  
2920  
2940  
2960  
2980  
3000  
3020  
3040

ROP (min/ft) 7  
Gamma (API) 150  
Cal (in) 16



LS, white, gry, fxl, foss, scattered inxln porosity, no shows  
Tr. white, gry cherts

Slug gry, dk gry, limey shale

LS, tan, slightly cherty(dense)

LS, cream, white, oom, fair oom porosity (barren)

Sh, black carb

Sh, black carb

LS, gry, white, chalky

Sh, gry, dk gry, green silty sh

**BKC 2998.0 (-1514.0)**

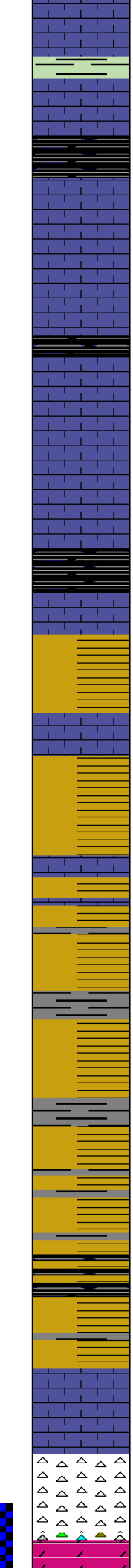
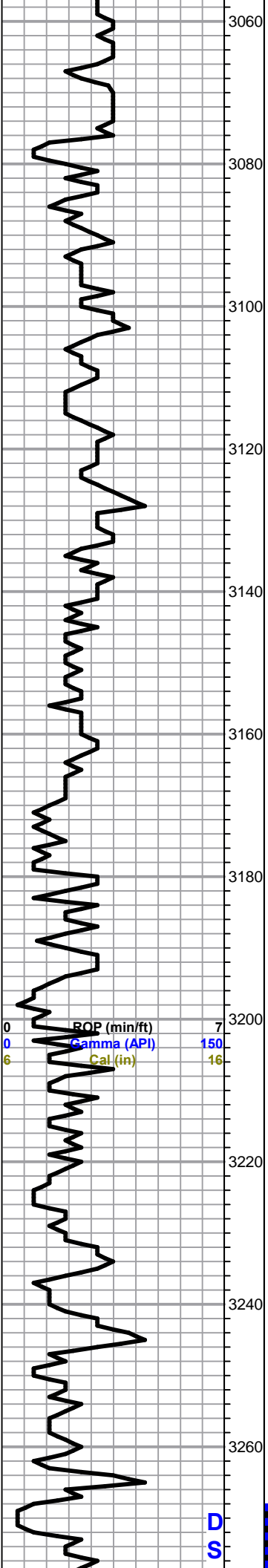
Sh, rusty brown, green, gry

LS, gry, green tinted, highly foss, (dense)

LS, white, sandy, tr. sd. tan, white, cal, poor visible porosity, well cemented

Sd. white, green, cal, friable in pts, no shows

Total Gas (units) 100  
C1 (units) 100  
C2 (units) 100  
C3 (units) 100  
C4 (units) 100



Sh, gry, green  
LS, gry, f-med xln, chalky, tr. pyrite

Sh, black carb

LS, a/a, granular, chalky, tr. pyrite

Sh, black carb

Tr. gry, gryish, green, purple, gry

LS, white, gry, tan, cherty, chalky, (few dense)

**Cherokee Shale 3134.0 (-1650.0)**

Sh, black carb

LS, tan, slightly cherty

Sh, gry, gryish,

LS, white, gry, chalky

V.C. soft shale

Tr. LS, a/a

V.C. soft shale

V.C. shale a/a

Sh, gry, black

LS, white, gry, chalky, cherty

**Mississippian 3263.0 (-1779.0)**

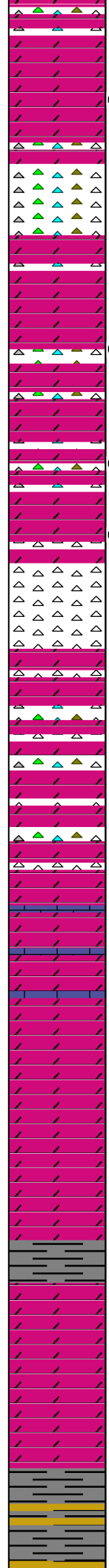
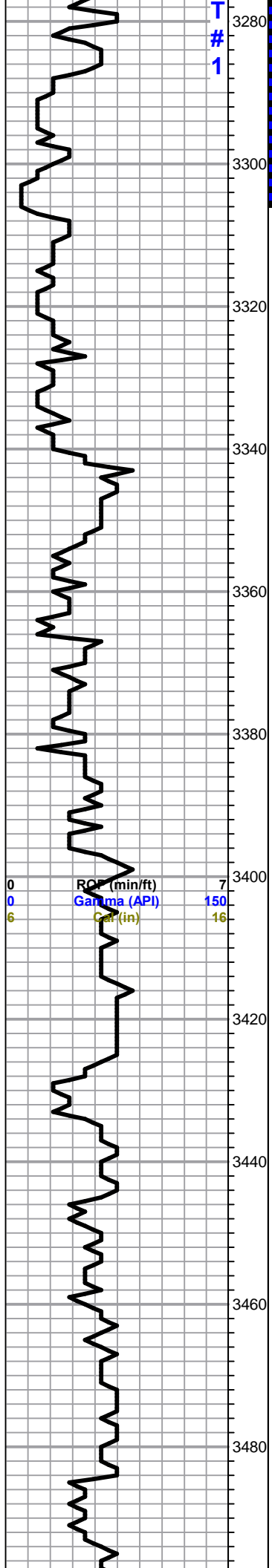
Chert, white, cream, boney

Chert a/a

0	Total Gas (units)	100
0	C1 (units)	100
0	C2 (units)	100
0	C3 (units)	100
0	C4 (units)	100

**DST#1 3268-3307**  
15-30-45-60

1st Open:



Dol. white, cream, suc. tr. brown stain/sat., plus white, cream, cherts  
 Chert, white, yellow,  
 Dol. white, cream, suc. tr. brown stain/sat. plus white, cream cherts  
 Dol. a/a, tr. golden brown stain, nsfo, no odor  
 Dol. white, gry, fxl, suc. gluc. plus white, foss. chert, tr. brown stain, nsfo, ??? odor  
 Chert, white, clear, trans  
 Chert, a/a, white, cream, suc. dol.  
 Chert, a/a, plus LS, white, f-med xln, dol.  
 Dol. a/a  
 Dol. a/a  
 Slug gry, purple, brown sh.  
**Kinderhook 3483.0 (-1999.0)**  
 Sh. gry, purple, yellowish

1st Open:  
 BOB 2.5 mins  
 2nd Open:  
 BOB 3.25 mins  
 Recovery:  
 190' MCW  
 1210' SW  
 Pressures:  
 ISIP 874 psi  
 FSIP 873 psi  
 IFP 65-244 psi  
 FFP 261-610 psi  
 HSH 1580-1574 psi

0	Total Gas (units)	100
0	C1 (units)	100
0	C2 (units)	100
0	C3 (units)	100
0	C4 (units)	100

3500  
3520  
3540  
3560  
3580  
3600  
3620  
3640  
3660  
3680  
3700

Sh. gry, purple, yellowish

Sh, A/A

Sh, purple, gry, yellow, gry

V.C. sh, few silty

a/a, silty, dolomitic???

**Hunton 3600.0 (-2116.0)**

Dol. tan, fxl, few med. xln, scattered porosity, brown stain, sfo, ft. odor

Dol. a/a, brown golden stain

Dol. a/a, stain, sat. nsfo, odor

**Maquoketa 3624.0 (-2140.0)**

Dol. white, gry, fxl, few sandy, tr. black stain

Dolomitic sh. gry, light gry

SAMPLE SKIP

Sh, a/a, gry, light gry, dolomitic

**Viola 3716.0 (-2232.0)**

**DST#2 3603-3610**

Mis-Run Bad O-ring in shut in tool

0	Total Gas (units)	100
0	C1 (units)	100
0	C2 (units)	100
0	C3 (units)	100
0	C4 (units)	100

**DST#3 3603-3617**

15-30-30-45

1st Open:  
BOB 25 sec.

2nd Open:  
BOB 30 sec.

Recovery:  
60' SOCMW  
(3%O, 52%W, 45% M)

180' SOMCW  
(1%O, 90%W, 9% M)

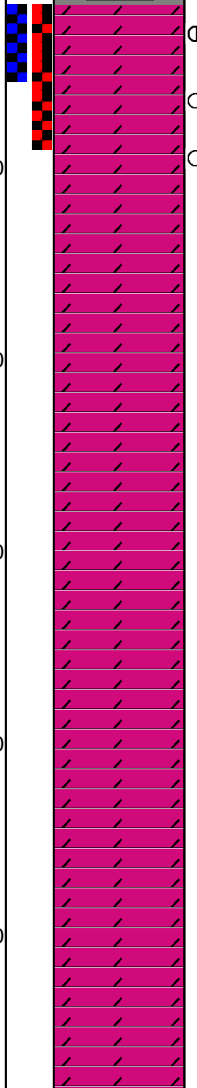
2,745' Salt Water

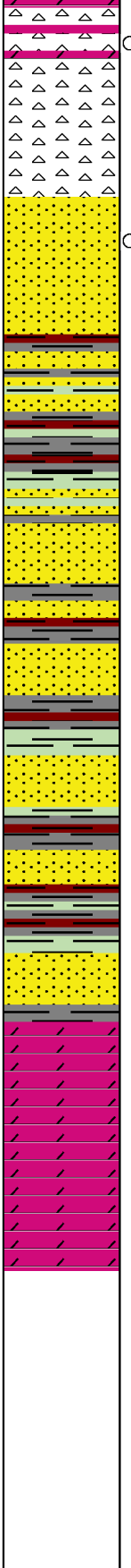
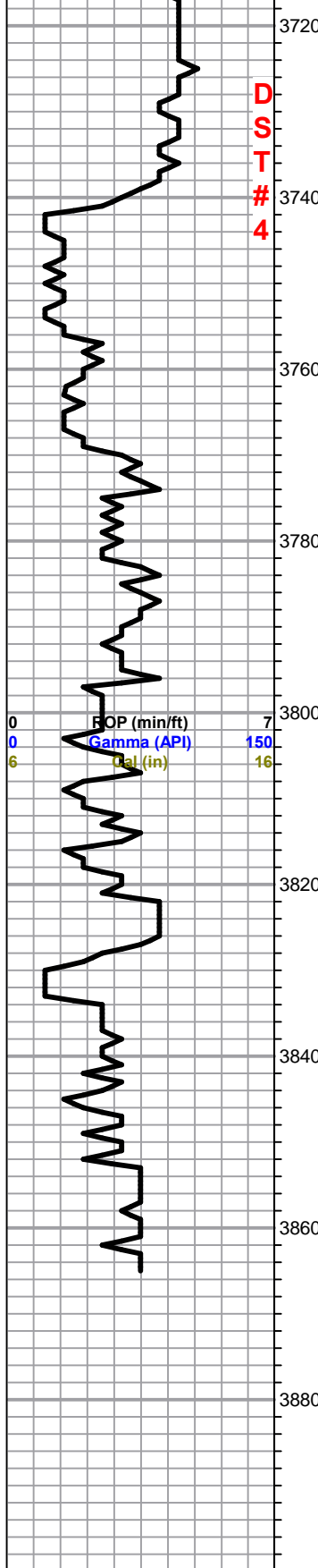
Pressures:  
ISIP 1295 psi  
FSIP 1305 psi  
IFP 716-1209 psi  
FFP 1225-1300 psi  
HSH 1772-1768 psi

0  
0  
6

ROP (m/ft)  
Gamma (API)  
Cal (in)

D  
S  
#  
T  
#  
2  
3





Chert, white, gry, plus white, gry, dolomite, tr. brown stain, nsfo, no odor plus white chalk

**Simpson Sand 3741.0 (-2257.0)**

Sd. clear, qtz, well rounded, friable, fair-good IG porosity, light brown stain, sfo (light/ clear) ft. odor, black tarry stain, few a/a, Sd. a/a dolomitic in part, scattered porosity

Sh, gry, gryish, green, sub waxey, shale

Sd. tan, vfg, sub angular, rounded, dolomitic

Sd. a/a

Slug, white, gry, sd. vfg, sub rounded, friable

Slug unconsolidated, qtz, grains, plus pyrite

**Lower Sand 3829.0 (-2345.0)**

Sd. white, clear, f-med grained, qtz, sub rounded, friable, fair porosity, no shows

**Arbuckle 3834.0 (-2354.0)**

Dol. gry, white, gryish, pk, f-med xln, poor visible porosity, no shows

a/a, plus white, chalk

**RTD 3865.0 (-2381.0)**

**DST#4 3726-3744**

30-45-45-60

1st Open:  
Fair 7.5"

2nd Open:  
Fair 9"

Recovery:  
40' WCM  
(17%W, 83%M)

125' Salt Water

Pressures:  
ISIP 1265 psi  
FSIP 1248 psi  
IFP 36-52 psi  
FFP 62-89 psi  
HSH 1836-1831 psi

0	C1 (units)	100
0	C2 (units)	100
0	C3 (units)	100
0	C4 (units)	100