

Geo Log Header
WellSight Systems

Scale 1:240 (5"=100') Imperial
Measured Depth Log

Well Name: Pfeifer Trust # 1-8
API: 15-195-23013-00-00
Location: Section 8 - T12S - R25W Trego County, KS
License Number: API # 15-151-22333-0000 Region: Wildcat
Spud Date: Dec. 10, 2016 Drilling Completed: 12-22-16
Surface Coordinates: 1235' FNL & 2185' FEL (3D loc)
SE-SW-NW-NE
Bottom Hole
Coordinates:
Ground Elevation (ft): 2583' K.B. Elevation (ft): 2590'
Logged Interval (ft): 3500 To: 4550' Total Depth (ft): 4554'
Formation: Marmaton
Type of Drilling Fluid: Chemical/Polymer/Gel

Printed by STRIP.LOG from WellSight Systems 1-800-447-1534 www.WellSight.com

OPERATOR

Company: RL INVESTMENT, LLC.
Address: 2698 J O Terrace
Hill City, KS. 67642

GEOLOGIST

Name: Patrick J. Deenihan
Company: Independent Consultant
Address: P. O. Box 781929
Wichita , KS 67278

DSTs

DST # 1 (3923'-3946') 30-45-45-60

IF: 6 1/4" Blow ; 1/4" Return.

FF: 6.0" Blow : Surface Return.

REC: 145' SMCW (93% Wtr.-9 % Mud); 60'MW (69% Wtr -31% Mud. (205' TOTAL FLUID)

IFP: 11# - 73#

FFP: 74# - 106#

CHL: 46,000ppm

ISIP: 1067#

FSIP: 1008#

RW: .25 @ 46 deg.

IHP: 1915#

FHP; 1913#

BHT: 117 deg.

DST # 2 (3947' - 3970') 30-45-45-60

IF: BOB in 6"

Surface Blow Return.

FF: BOB in &.% "

No Return.

REC: 95' HMCW (56% Wtr. - 44% Mud) ; 125' MCW (67% Wtr. - 33% Mud) ; 815' SMCW (98% Wtr. - 2% Mud) (1035' TOTAL FLUID)

IFP: 31# - 262#

FFP: 270# - 296#

Chl: 67,000 ppm

ISIP: 1209#

FSIP: 1197#

RW: .15 @ 56 deg.

IHP: 1934#

FHP: 1929#

BHT: 125 deg.

DST # 3 (4034' - 4080') 30-45-45-60

If: 6" Blow

No Blow Back

FF: 10"

Weak Surf. Blow Back

REC: 420' GIP ; 10' GO (1% Gas; 99% Oil) : 75' GSOCM (27% Gas; 13% Oil; 85% Mud) : 60' GSWOCM : (1% Gas; 21% Oil ; 5% Wtr. 73% Mud)

TOTAL FLUID = 145'

IFP; 11#/73#

FFP: 58#/76#

Grav. = 40 deg.

ISIP: 1313#

FSIP:1297#

Chlor; 22,000

IHP; 1963#

FHP; 1960#

BHT: 112 deg.

DST # 4 (4089'- 4106')

30-45-45-45

IF: Surf Blow to 3/4"

No Return

FF; Surf. Blow

No Return

Rec: 5' Mud with Oil streaks.

IFP: 9#-11#

FFP: 13#-13#

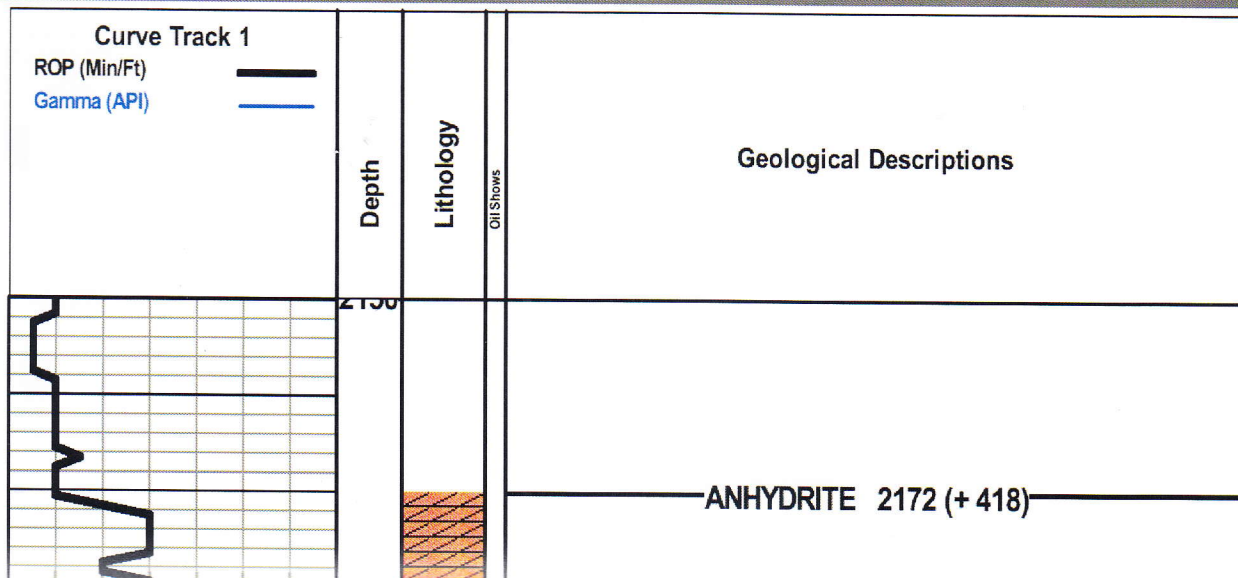
ISIP: 248#

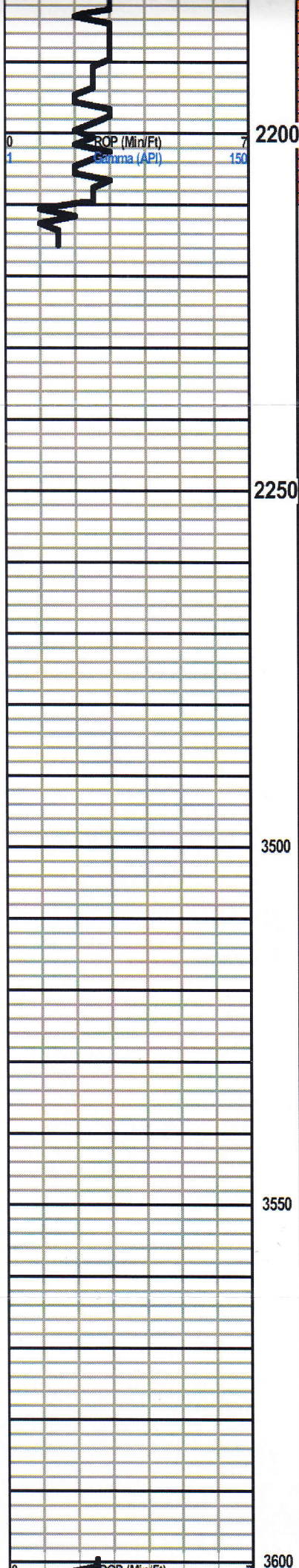
FSIP 51#

IHP: 1983#

FHP: 1976#

BHT: 110 deg.



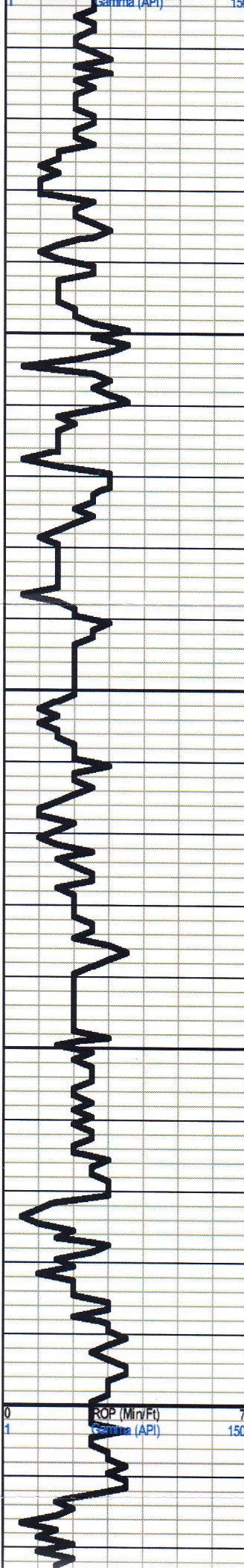


BASE/ ANHY 2210 (+ 380)

7:00 A.M. DEPTH

- 12-10-16 Spud and set Surface @ 256'
- 12-11-16 : 966'
- 12-12-16 : 2210'
- 12-13-16 : 2974'
- 12-14-16 : 3639' (Geo on Location)
- 12-15-16 : 3946'
- 12-16-16 : 3970"
- 12-17-16 : 4061' Shut Down (Weather)
- 12-18-16 : 4061. Shut Down (Weather)
- 12-19-16 : 4061'
- 12-20-16 : 4106'
- 12-21-16 : 4248'
- 12-22-16 : 4550'

Mud displaced at 3332'



TOPEKA 3643 (- 1053)

3650

Ls., Wht., Gry, Fn-xln., Fssl., sli-Chalky. No show.

Sh., Gry, Grn. Argil.

Ls., Tan, Gry., Fn-xln., Chalky and Ool. No show.

Sh., Gry, Dk-Gry Grn. Argil.

Ls., Wht., Gry, Sing. Fn-xln., Chalky, Fssl. No show.

Sh., Gry, Dk-Gry., Grn., Brn. Argil

Ls., Wht., Crm., Gry, Sing. Chalky, Fn-xln., Fssl. No show.

3700

Sh., Dk-Gry., Gry., Brn., Argil.

Ls., Wht., Crm., Gry. Fn-xln., Fssl (Ool) sub-Chalky. No show.

Sh., Gry, Grn., Brn. Argil

Ls., Wht., Crm., Lt-Gry, Fn-xln., Fssl., (Ool) sub Chalky. No show

3750

Sh., Gry, Grn. Argil

Sh., Black Carb.

Ls., Wht., Crm., Lt-Gry, Fn-xln., Chalky and Fssl., No show.

Sh., Gry, Grn., Brn. Argil.

Ls., Crm., Lt-Gry, Fn-xln., Fssl.(Ool), No show.

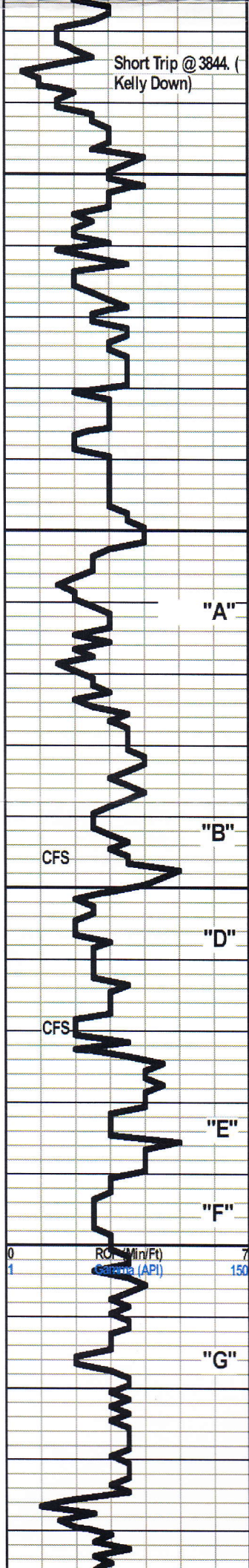
Ls., Crm., Tan., Micro to Fn-xln Trc. of Lt-Gry chert. No show.

3800

Ls., Crm., Lt-Gry, Tan. Fn-xln to Fssl- Ool., Sub- chalky. No show.

Sh., Black Carb.

Ls., as above with incr. in Fssl., Lime. No show



Short Trip @ 3844. (Kelly Down)

3850

Ls., Wht., Crm., Fn-xln., to Abund. Fssl., Sub-Chalky. No show.

HEEBNER 3866 (-1276)

Sh., Black Carb.
Sh., Gry., Dk-Gry., Brn., Argil. to Silty.

TORONTO 3889 (-1299)

Ls., Crm., Tan, Fn-xln., Ool. to fragmented Fssl. Trc of off Wht to Gry, Chert. No show.

3900

Sh., Gry., Brn., Grn., Argil

LANSING 3906 (-1316)

Ls., Wht., Crm., Sing. Fn-xln, Sli-Ool., and sub Chalky No show.

"A"

Pipe Strap = 2.27' Long (windy). Dev. 1.75 Deg. @ 3970'

1

Sh., Gry., Grn., Brn., Argil.

"B"

CFS

Ls., Crm., Tan, Fn-xln., Fssl. Sing/Mott. Ool with f-G-inter Ool Por. PP-to sli-vug. Por. Very few pcs with GSLO., Med.,-Dk. Brn., oil. scattered Black heavy oil stn to sat. No Odor. V-P-Fluor.

3950

"D"

2

Ls. Crm., Tan., Lt-Gry., Fn-xln., Fssl. Ool to shallow Inter-xln., Por. Vug. in Part GSLO., Lt. Odor scat. Pcs with Sat. Stn. P-Fluor.

Ls., Wht., Crm. Sing. Fn-xln to sli-Fssl. trc. of sub-Chalky. Trc. of lt Brn. oil stn on the edges of a few pcs. V-sli-odor. No Fluor.

CFS

"E"

Sh., Black Carb.
Ls., Wht., Fn-xln., Chalky No show.

"F"

Sh., Vari-colored.
Ls., Wht., Crm., Fn-xln to Ool. and Fssl. Suc-Chalky, Scattered Brn. oil stn on edges of several pcs, trc of LFO. Very Faint odor P-Fluor.

4000

"G"

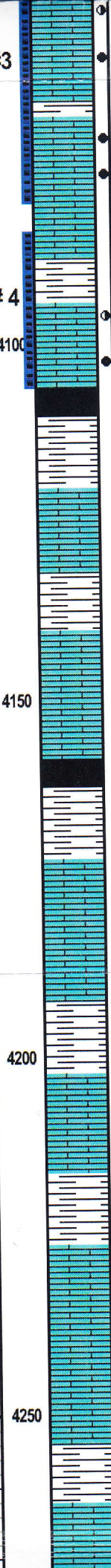
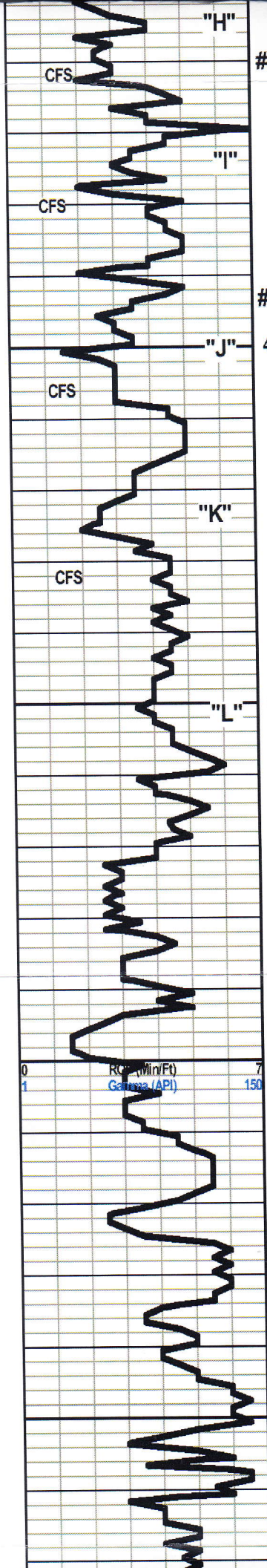
Sh., Gry., Brn., Grn., Argil.
Ls., Wht., Very Chalky, P-Fn-xln to sli-Fssl., trc. of fresh Trans. Chert. No Show.

Ls., as/above

At 4031-Shut down rig due to weather friday evening the 16th. Began drilling on Monday Morning the 19th.

Ls., wht., Gry., Micro-xln
Sh., Black Carb.
Sh., Vari-color., Argil., Carb.

0 RC (Min/Ft) 7
1 Gauge (API) 150



Ls., Crm., Lt-Gry, Fn-xln., Fssl., Sub-Chaiky. Ool., with inter Gran-fssl por. Vug., in part. Trc of PP-Por. F-G Show of Live oil. Fair-SFO., light to med. Brn. Good odor. Scattered Fluor.

Sh., Gry, Brn., Orange and Grn. Argil

Ls., Wht., Crm., Tan, Fn-xln to Fssl. (Ool) F-G inter-xln., F-G Ool. Vug to PP-Por. F-SLFGO Good Odor Fair Fluor.

Sh., Black Carb., to abund. Vari-color Argil.

4

Ls., Crm., Wht., Micro-xln., Rare Fssl. Scattered Lt Brn to Black spotty oi stn., Sli-Odor trc of F.O.

Ls., Crm., Tan., Wht. P-G Inter-xln. Por. A few pcs. of VG-Inter-Ool Por., GSLFO. Predom. Lt to Med Brn., Scattered Black LO Scatt. to Sat Brn oil stn. Most of Black stn. is Scattered to spotty edge Stn. F-G Odor. F-Fluor Scattered to solid.

Sh., Black Carb., Lt-Med Gry, Brn., Grn., Argil.

Ls., Crm., Wht., Micro, Fn-xln., Sli-Ool. Lt to Med. Oil stn. No Free oil. Vfaint odor., No free oil, no fluor. Very poor por. Sub-Chalky with depth. Ls., Wht Fn-xln. to Fssl(Ool) barren

Sh. Gry, Dk, Gry., Brn., & Grn. Argil.

Ls., Wht., Fn-xln., Fssl., Sub-Chalky. No show.

"J" 4100

"K"

4150

Sh., Black Carb. **BKC 4159 (- 1569)**
 Sh., Abund. Vari Color.

MARMATON 4174 (-1584)
 Ls., Wht., Tan., Crm., Gry., Sing/Mott. Micro-fn-xln., Sub-Chalky to Cherty, No show.

Sh., Brn., Choc-Brn., Grn., Gry-Dk-Gry, Argil., Mica.

ALTA "A" 4202 (-1612)
 Ls., Wht., Gry, Tan., Sing. Fn-xln., Sub-Chalky, Cherty No Show.

Sh., Vari-Color., Argil to Gummy. Sample washes Brn.

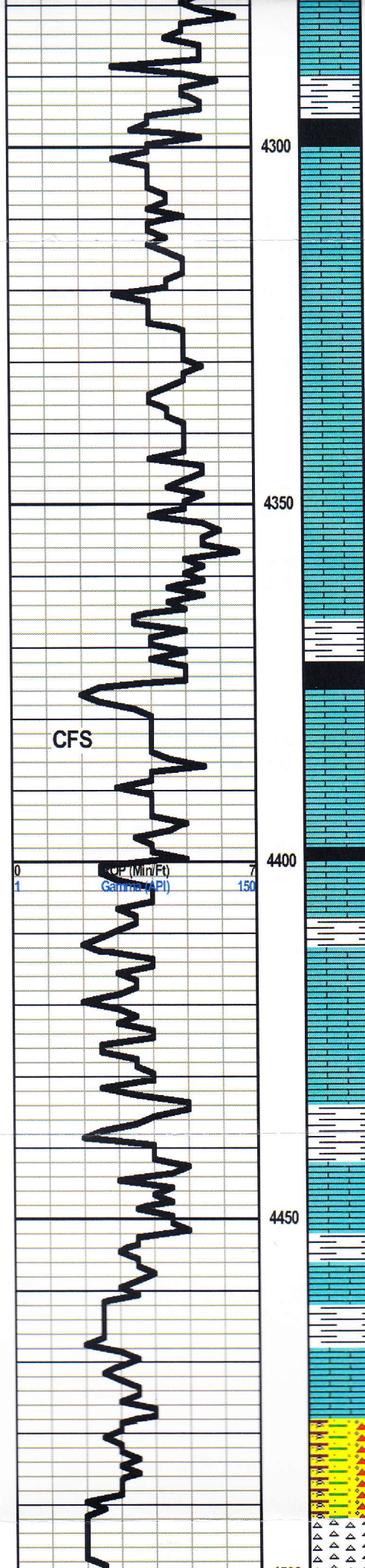
ALTA "B" 4237 (-1647)
 Ls., Wht., Tan, Gry., Sung. Dense Micro-xln., Sub-Chalky No Show

4200

Sg Gry, Brn., Lt Grn., Grn., Argil

ALTA "C" 4262 (-1672)
 Ls., Gry, Tan, Micro-xln., Sing/Mott. No show

4250



Sh., Gry., Dk-Gry., Grn., Brn. Argil.

Sh., Black Carb.

PAWNEE 4300 (-1710)

Ls., Wht., Gry Micro-xln to p-Fn-xln., Cherty Ls. Fresh to sli-weathered chert., No show.

Ls., Lt-Gry., Crm., Tan. Sing. Micro-xln dense. No show

Ls., Wht., Lt-Gry., Tan., Fn. to Micro-xln. Dense. Sub-Chalky in part. Chert Tan, Gry., off wht. No show.

Sample as above with noted incr., in varicolor. Argil Shale.

Sh., Brn., Gry., Argil. Brn Carb

Sh., Black Carb

Ft. Scott 4375 (-1785)

Ls., Crm., Gry., Sing. Fn-xln Sli-Fssl., Sub Chalky., Trc. of shallow inter-xln., and PP-por. Cemented Ool. with no vis. por. Trc., of oil strn on edges. Brn to Black Flakey. No LFO., No odor. No Oil Fluor.

Cher. SH. 4398 (-1808)

Sh., Black Carb.

Sh., Predom. Grys, sli-Vari-color., Argil to silty

Ls., Crm., Lt-Gry., Gry., Sing. Micro-xln., V-Dense, trc of Ool-Ooc. shallow Vug. por., Cherty in part fresh Tan., Gry., Wht., Yellow, Fresh. No show.

Sh., Gry., Dk-Gry., Brn., Orange to Burbt Organge, Argil

Ls., Gry., Crm., Tan., Micro-xln., sli-Cherty. No show.

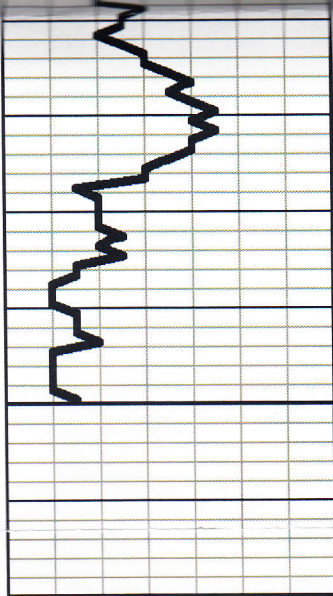
Sh., Gry., Brn., Grn., Argil.

Sh., Brn., Reddish Brn., Gry., Argil.

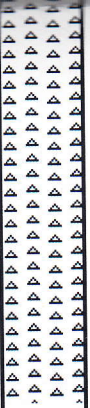
Chert Wht., Crm., Lt-Gry Fresh. Rare Fssl (Ool;Ooc) to sli Sucrosic., No show., Trc. of v-Fn. SS Stringers. Clusters Clear sub-rd. Semi-Friable to Free Qtz., Barren.

Sh., Abund. Vari-Color.

MISS. 4499 (-1909)



4550

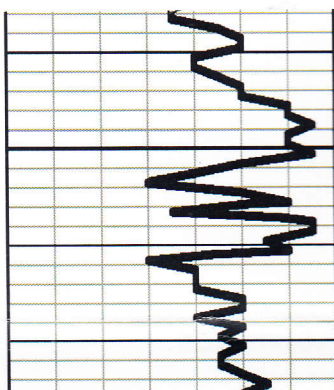


Chert, Wht., Crm. Maroon, Orange. Sing/Mott., Fresh to sil- Weath. Trc of P-Fssl Limey
Chert, No show. SS., Clear Fn., Grn. sorted sub-ang. to Sub-rd. Semi-Friable to
Friable clusters to free Qtz. Stringers. No Show.

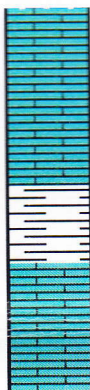
Chert Wht., Lt- Gry., Crm., Fresh, Sharp Fssl., in part. Trc of Ool shallow Vug. Por.,
No show

Chert., Wht Fresh Sharp., internally Fssl. no show.

RTD = 4550' Reached @ 5:11A.M. on 12-22-16



4250



Sg Gry, Brn., Lt Grn., Grn., Argil

ALTA. "C" 4262 (-1672)

Ls., Gry., Tan, Micro-xln., Sing/Mott. No show