



Current

Spud Date 10/11/1955
D&A 11/30/1955

Re-Spud 7/10/2005

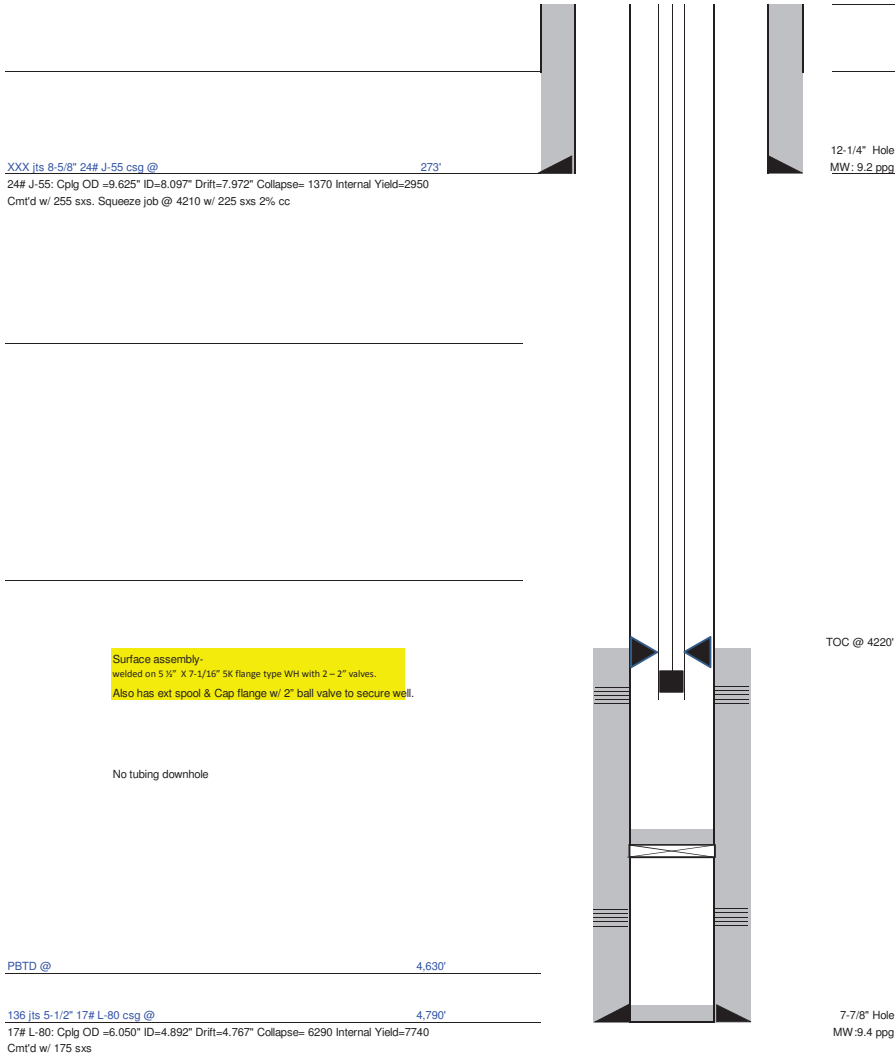
Field Bluff Creek
County Sumner
State KS
Well **Charlie 1-11**
SH Location SEC 11, TWP 34S, RNG 4W
Elevations 1184' KB; 1176' GL

Wellbore Schematic

15-191-00206
API No.

Original Completion ()
Current X
Workover
Proposed

Well Bore Data MD TVD



Stage 2 Perfs@	Formation	Top	Bottom	Phasing	Feet	SPF	Shots
	Miss	4280'	4302'		22'	3'	66'
Plug set @		4688'	Topped w/ cement				
Stage 1 Perfs@	Formation	Top	Bottom	Phasing	Feet	SPF	Shots
	Simpson	4688'	4694'		6'		