



TRILOBITE TESTING, INC.

DRILL STEM TEST REPORT

White Exploration, Inc.

1/30/31

1635 N. Waterfront PKWY Suite 100 Wichita, KS 67206

Jacobs-Wood 2

ATTN: Andy White

Job Ticket: 59457

DST#: 1

Test Start: 2017.03.02 @ 03:20:02

GENERAL INFORMATION:

Formation: **Morrow**

Deviated: No Whipstock: ft (KB)

Time Tool Opened: 06:38:45

Time Test Ended: 12:46:00

Test Type: Conventional Bottom Hole (Initial)

Tester: Chris Hagman

Unit No: 75

Interval: 5170.00 ft (KB) To 5270.00 ft (KB) (TVD)

Reference Elevations: 2842.00 ft (KB)

Total Depth: 5270.00 ft (KB) (TVD)

2832.00 ft (CF)

Hole Diameter: 7.88 inches Hole Condition: Good

KB to GR/CF: 10.00 ft

Serial #: 8289

Inside

Press@RunDepth: 44.12 psig @ 5202.00 ft (KB)

Capacity: 8000.00 psig

Start Date: 2017.03.02

End Date:

2017.03.02

Last Calib.: 1899.12.30

Start Time: 03:20:02

End Time:

12:46:00

Time On Btm: 2017.03.02 @ 06:38:15

Time Off Btm: 2017.03.02 @ 10:30:45

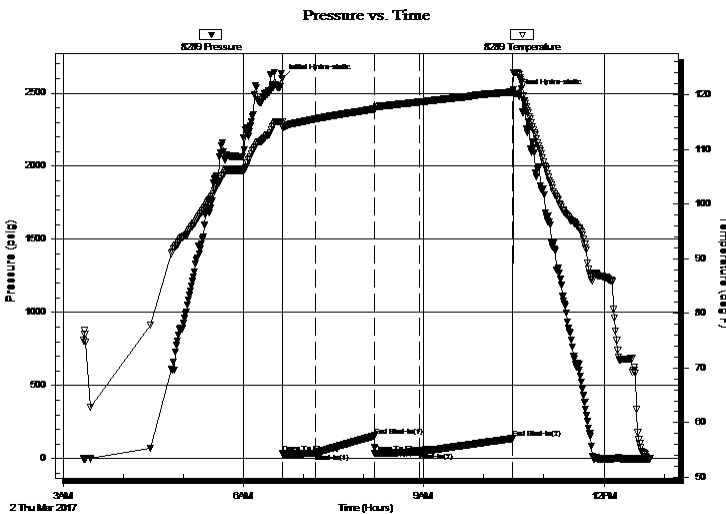
TEST COMMENT: IF: 2.5 inches in 30 min., weak building blow

IS: No blow back

FF: 4 inches in 45 min., fair building blow

FS: No blow back

PRESSURE SUMMARY



Time (Min.)	Pressure (psig)	Temp (deg F)	Annotation
0	2598.62	115.01	Initial Hydro-static
1	33.71	114.20	Open To Flow (1)
34	37.11	115.61	Shut-In(1)
93	154.87	117.42	End Shut-In(1)
93	35.33	117.38	Open To Flow (2)
138	44.12	118.69	Shut-In(2)
231	136.60	120.53	End Shut-In(2)
233	2498.43	124.09	Final Hydro-static

Recovery

Gas Rates

Length (ft)	Description	Volume (bbl)
15.00	oil spotted mud 100%M	0.07

	Choke (inches)	Pressure (psig)	Gas Rate (MMcf/d)



**TRILOBITE
TESTING, INC.**

DRILL STEM TEST REPORT

FLUID SUMMARY

White Exploration, Inc.

1/30/31

1635 N. Waterfront PKWY Suite 100 Wichita, KS
67206

Jacobs-Wood 2

Job Ticket: 59457

DST#: 1

ATTN: Andy White

Test Start: 2017.03.02 @ 03:20:02

Mud and Cushion Information

Mud Type: Gel Chem

Cushion Type:

Oil API:

deg API

Mud Weight: 9.00 lb/gal

Cushion Length:

ft

Water Salinity:

4200 ppm

Viscosity: 59.00 sec/qt

Cushion Volume:

bbbl

Water Loss: 6.00 in³

Gas Cushion Type:

Resistivity: ohm.m

Gas Cushion Pressure:

psig

Salinity: 1600.00 ppm

Filter Cake: inches

Recovery Information

Recovery Table

Length ft	Description	Volume bbl
15.00	oil spotted mud 100%M	0.074

Total Length: 15.00 ft Total Volume: 0.074 bbl

Num Fluid Samples: 0

Num Gas Bombs: 0

Serial #:

Laboratory Name:

Laboratory Location:

Recovery Comments: RW=1.362@73F

