



TRILOBITE TESTING, INC.

DRILL STEM TEST REPORT

White Exploration, Inc.

1/30/31

1635 N. Waterfront PKWY Suite 100 Wichita, KS 67206

Jacobs-Wood 2

Job Ticket: 59458

DST#: 2

ATTN: Andy White

Test Start: 2017.03.03 @ 06:57:00

GENERAL INFORMATION:

Formation: **St. Louis**

Deviated: No Whipstock: 2842.00 ft (KB)

Time Tool Opened: 09:12:50

Time Test Ended: 14:42:45

Test Type: Conventional Bottom Hole (Initial)

Tester: Chris Hagman

Unit No: 75

Interval: ft (KB) To ft (KB) (TVD)

Total Depth: 5530.00 ft (KB) (TVD)

Hole Diameter: 7.78 inches Hole Condition: Good

Reference Elevations: 2842.00 ft (KB)

2832.00 ft (CF)

KB to GR/CF: 10.00 ft

Serial #: 8289 Inside

Press@RunDepth: 34.59 psig @ 5527.00 ft (KB)

Start Date: 2017.03.03

End Date: 2017.03.03

Start Time: 06:57:02

End Time: 14:42:45

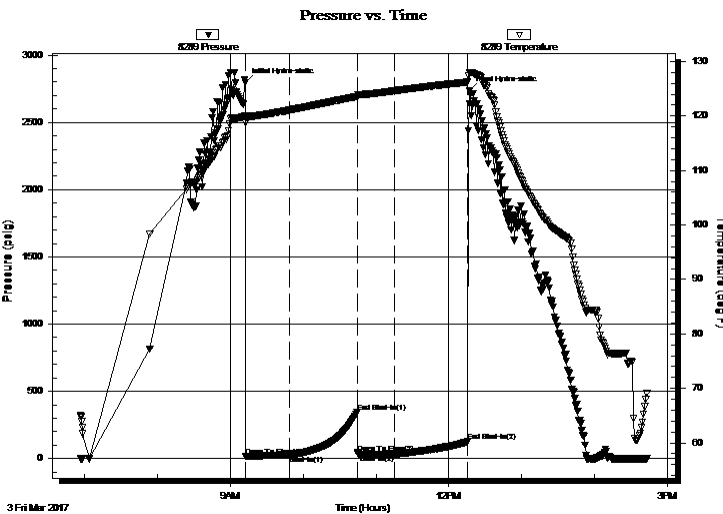
Capacity: 8000.00 psig

Last Calib.: 1899.12.30

Time On Btm: 2017.03.03 @ 09:12:40

Time Off Btm: 2017.03.03 @ 12:17:00

TEST COMMENT: IF: Weak surface blow, died 20 min.
 IS: No blow back
 FF: Weak surface blow, died 5 min., flushed tool no change
 FS: No blow back



PRESSURE SUMMARY

Time (Min.)	Pressure (psig)	Temp (deg F)	Annotation
0	2796.39	120.01	Initial Hydro-static
1	18.97	118.66	Open To Flow (1)
36	25.52	121.05	Shut-In(1)
92	345.17	123.55	End Shut-In(1)
92	42.40	123.36	Open To Flow (2)
123	34.59	124.61	Shut-In(2)
183	125.74	126.22	End Shut-In(2)
185	2733.67	127.96	Final Hydro-static

Recovery

Length (ft)	Description	Volume (bbl)
15.00	Oil Spotted Mud	0.07

Gas Rates

	Choke (inches)	Pressure (psig)	Gas Rate (MMcf/d)



**TRILOBITE
TESTING, INC.**

DRILL STEM TEST REPORT

FLUID SUMMARY

White Exploration, Inc.

1/30/31

1635 N. Waterfront PKWY Suite 100 Wichita, KS
67206

Jacobs-Wood 2

Job Ticket: 59458

DST#: 2

ATTN: Andy White

Test Start: 2017.03.03 @ 06:57:00

Mud and Cushion Information

Mud Type: Gel Chem

Cushion Type:

Oil API:

deg API

Mud Weight: 9.00 lb/gal

Cushion Length:

ft

Water Salinity:

4100 ppm

Viscosity: 58.00 sec/qt

Cushion Volume:

bbbl

Water Loss: 7.19 in³

Gas Cushion Type:

Resistivity: ohm.m

Gas Cushion Pressure:

psig

Salinity: 2050.00 ppm

Filter Cake: inches

Recovery Information

Recovery Table

Length ft	Description	Volume bbl
15.00	Oil Spotted Mud	0.074

Total Length: 15.00 ft Total Volume: 0.074 bbl

Num Fluid Samples: 0

Num Gas Bombs: 0

Serial #:

Laboratory Name:

Laboratory Location:

Recovery Comments: RW=1.360@74F

