



TEMPORARY ABANDONMENT WELL APPLICATION

OPERATOR: License# _____
 Name: _____
 Address 1: _____
 Address 2: _____
 City: _____ State: _____ Zip: _____ + _____
 Contact Person: _____
 Phone: (_____) _____
 Contact Person Email: _____
 Field Contact Person: _____
 Field Contact Person Phone: (_____) _____

API No. 15- _____
 Spot Description: _____
 _____ - _____ - _____ - _____ Sec. _____ Twp. _____ S. R. _____ E W
 _____ feet from N / S Line of Section
 _____ feet from E / W Line of Section
 GPS Location: Lat: _____, Long: _____
(e.g. xx.xxxxx) (e.g. -xxx.xxxxx)
 Datum: NAD27 NAD83 WGS84
 County: _____ Elevation: _____ GL KB
 Lease Name: _____ Well #: _____
 Well Type: (check one) Oil Gas OG WSW Other: _____
 SWD Permit #: _____ ENHR Permit #: _____
 Gas Storage Permit #: _____
 Spud Date: _____ Date Shut-In: _____

	Conductor	Surface	Production	Intermediate	Liner	Tubing
Size						
Setting Depth						
Amount of Cement						
Top of Cement						
Bottom of Cement						

Casing Fluid Level from Surface: _____ How Determined? _____ Date: _____
 Casing Squeeze(s): _____ to _____ w / _____ sacks of cement, _____ to _____ w / _____ sacks of cement. Date: _____
(top) (bottom) (top) (bottom)
 Do you have a valid Oil & Gas Lease? Yes No
 Depth and Type: Junk in Hole at _____ Tools in Hole at _____ Casing Leaks: Yes No Depth of casing leak(s): _____
(depth) (depth)
 Type Completion: ALT. I ALT. II Depth of: DV Tool: _____ w / _____ sacks of cement Port Collar: _____ w / _____ sack of cement
(depth) (depth)
 Packer Type: _____ Size: _____ Inch Set at: _____ Feet
 Total Depth: _____ Plug Back Depth: _____ Plug Back Method: _____

Geological Data:

Formation Name	Formation Top	Formation Base	Completion Information
1. _____	At: _____	to _____ Feet	Perforation Interval _____ to _____ Feet or Open Hole Interval _____ to _____ Feet
2. _____	At: _____	to _____ Feet	Perforation Interval _____ to _____ Feet or Open Hole Interval _____ to _____ Feet

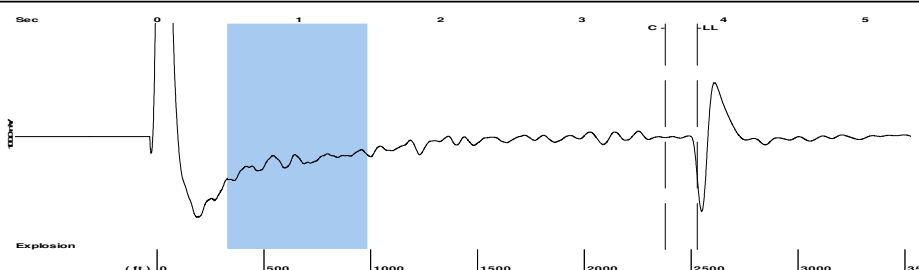
UNDER PENALTY OF PERJURY I HEREBY ATTEST THAT THE INFORMATION CONTAINED HEREIN IS TRUE AND CORRECT TO THE BEST OF MY KNOWLEDGE

Submitted Electronically

Do NOT Write in This Space - KCC USE ONLY	Date Tested: _____	Results: _____	Date Plugged: _____	Date Repaired: _____	Date Put Back in Service: _____
	Review Completed by: _____ Comments: _____				
TA Approved: <input type="checkbox"/> Yes <input type="checkbox"/> Denied Date: _____					

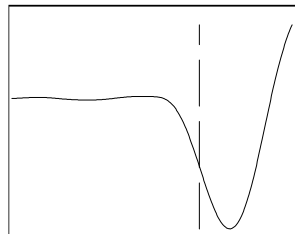
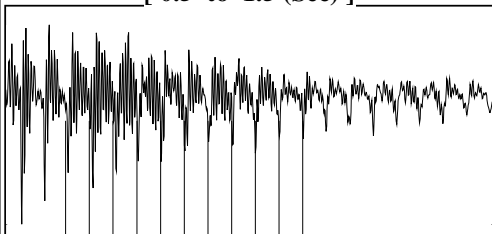
Mail to the Appropriate KCC Conservation Office:

	KCC District Office #1 - 210 E. Frontview, Suite A, Dodge City, KS 67801	Phone 620.682.7933
	KCC District Office #2 - 3450 N. Rock Road, Building 600, Suite 601, Wichita, KS 67226	Phone 316.337.7400
	KCC District Office #3 - 1500 SW Seventh Steet, Chanute, KS 66720	Phone 620.432.2300
	KCC District Office #4 - 2301 E. 13th Street, Hays, KS 67601-2651	Phone 785.261.6250

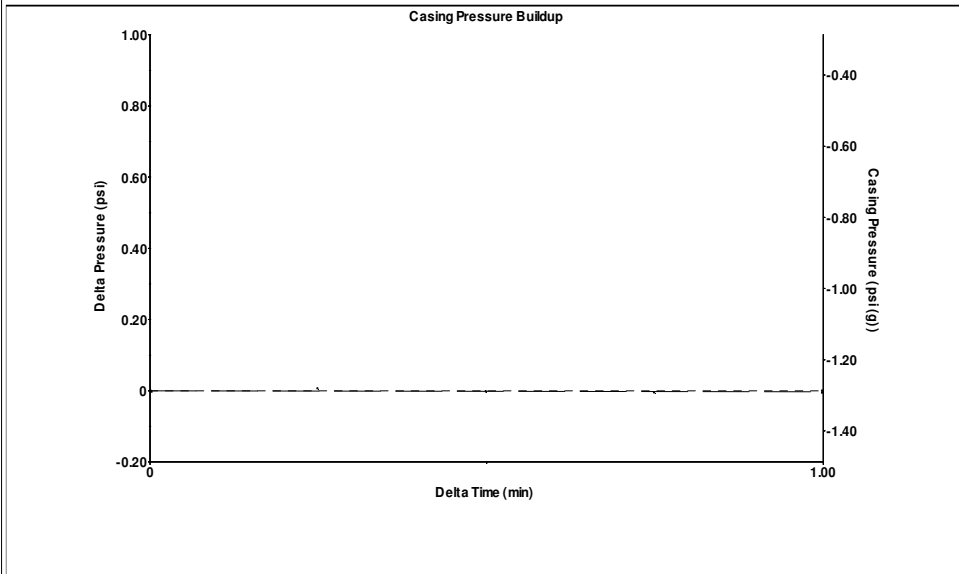


Filter Type High Pass Automatic Collar Count Yes Time 3.813 sec
 Manual Acoustic Veloc 1301.85 ft/s Manual JTS/sec 20.5339 Joints 79.7264 Jts
 Depth 2527.33 ft

[0.5 to 1.5 (Sec)]

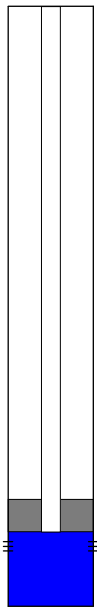


Analysis Method: Automatic



Change in Pressure -0.00 psi PT12896
 Change in Time 1.00 min Range 0 - ? psi

Production		Casing Pressure	-1.3 psi (g)
Current	Potential	Casing Pressure Buildup	-0.003 psi
Oil - *-	- *- BBL/D	1.00 min	
Water - *-	- *- BBL/D	Gas/Liquid Interface Pressure	-0.5 psi (g)
Gas - *-	- *- Mscf/D		
IPR Method Vogel		Liquid Level Depth	2527.33 ft
PBHP/SBHP - *-		Pump Intake Depth	2719.00 ft
Production Efficiency 0.0		Formation Depth	2801.00 ft
Oil 40 deg.API			
Water 1.05 Sp.Gr.H2O			
Gas 0.68 Sp.Gr.AIR			
Acoustic Velocity 1325.64 ft/s			
Formation Submergence			
Total Gaseous Liquid Column HT (TVD)	192 ft		
Equivalent Gas Free Liquid HT (TVD)	192 ft		



Producing

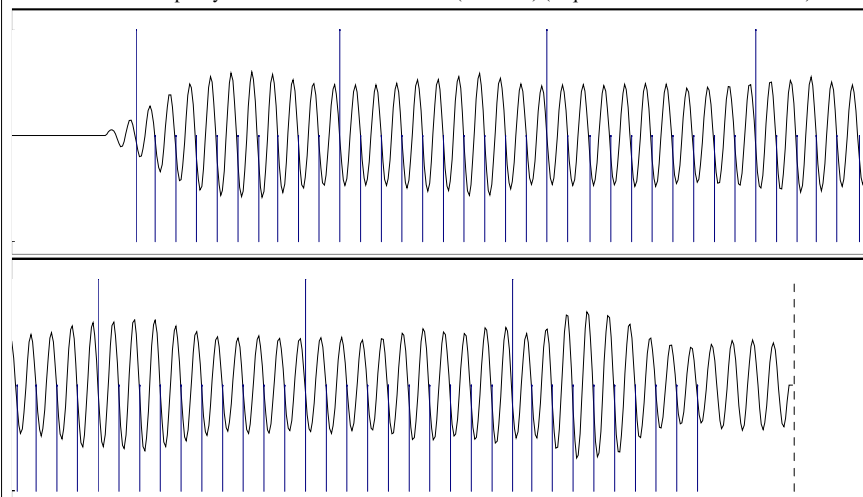
Annular Gas Flow 0 Mscf/D

% Liquid 100 %

Pump Intake 64.3 psi (g)

Producing BHP 101.6 psi (g)

Static BHP - *- psi (g)



Acoustic Velocity	1325.64 ft/s	Joints counted	69
Joints Per Second	20.9091 jts/sec	Joints to liquid level	79.7264
Depth to liquid level	2527.33 ft	Filter Width	18.5339
Automatic Collar Count	Yes	Time to 1st Collar	0.288

Conservation Division
District Office No. 1
210 E. Frontview, Suite A
Dodge City, KS 67801



Phone: 620-682-7933
<http://kcc.ks.gov/>

Pat Apple, Chairman
Shari Feist Albrecht, Commissioner
Jay Scott Emler, Commissioner

Sam Brownback, Governor

April 18, 2017

Shawn Hildreth
Linn Operating, Inc.
600 TRAVIS STE 5100
HOUSTON, TX 77002-3018

Re: Temporary Abandonment
API 15-081-20948-00-00
VOSHELL 2
NE/4 Sec.29-29S-32W
Haskell County, Kansas

Dear Shawn Hildreth:

"Your temporary abandonment (TA) application for the well listed above has been approved. In accordance with K.A.R. 82-3-111 the TA status of this well will expire 04/18/2018.

- * If you return this well to service or plug it, please notify the District Office.
- * If you sell this well you are required to file a Transfer of Operator form, T-1.
- * If the well will remain temporarily abandoned, you must submit a new TA application, CP-111, before 04/18/2018.

You may contact me at the number above if you have questions.

Very truly yours,

Michael Maier"