



**TRILOBITE TESTING, INC.**

# DRILL STEM TEST REPORT

Coachman Energy LLC

**S14-15S-20W Ellis Co, KS**

1125 17th St Suite 410  
Denver Co, 80202

**Penny #1-14-15-20**

Job Ticket: 63518

**DST#: 1**

ATTN: Charlie Sturdavant/

Test Start: 2017.03.23 @ 20:35:00

## GENERAL INFORMATION:

Formation: **Lansing ' C and D' z**

Deviated: No Whipstock: ft (KB)

Time Tool Opened: 22:24:00

Time Test Ended: 02:37:00

Test Type: Conventional Bottom Hole (Initial)

Tester: Spencer J. Staab

Unit No: 84

**Interval: 3322.00 ft (KB) To 3390.00 ft (KB) (TVD)**

Reference Elevations: 2052.00 ft (KB)

Total Depth: 3390.00 ft (KB) (TVD)

2044.00 ft (CF)

Hole Diameter: 7.88 inches Hole Condition: Fair

KB to GR/CF: 8.00 ft

**Serial #: 8934**

**Inside**

Press@RunDepth: 118.43 psig @ 3328.00 ft (KB)

Capacity: 8000.00 psig

Start Date: 2017.03.23

End Date:

2017.03.24

Last Calib.:

2017.03.24

Start Time: 20:35:05

End Time:

02:36:59

Time On Btm:

2017.03.23 @ 22:23:45

Time Off Btm:

2017.03.24 @ 00:39:45

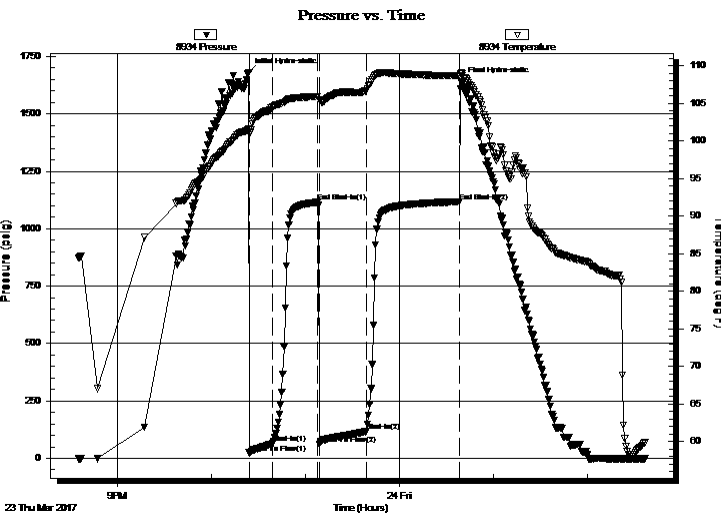
## TEST COMMENT:

15-IF-BOB in 5 minutes

30-ISI-Slight Surface Blow Throughout

30-FF-BOB in 30 seconds

60-FSI-Fair Blow Throughout; Built to 4 and 3/4 inches; died back to 4 inches



## PRESSURE SUMMARY

Time (Min.)	Pressure (psig)	Temp (deg F)	Annotation
0	1680.58	101.60	Initial Hydro-static
1	23.24	101.03	Open To Flow (1)
16	64.00	104.52	Shut-In(1)
44	1115.44	105.89	End Shut-In(1)
45	60.99	105.47	Open To Flow (2)
75	118.43	106.71	Shut-In(2)
135	1117.56	108.69	End Shut-In(2)
136	1640.51	108.92	Final Hydro-static

## Recovery

Length (ft)	Description	Volume (bbl)
12.00	GOCM 5% G 5% O 90% M	0.17
60.00	OCM 5% O 95% M	0.84
30.00	GMO 30% G 20% M 50% O	0.42
120.00	MCO 20% M 80% O	1.68
40.00	OGCM 5% O 35% G 60% M	0.56

## Gas Rates

	Choke (inches)	Pressure (psig)	Gas Rate (Mcf/d)





**TRILOBITE  
TESTING, INC.**

# DRILL STEM TEST REPORT

**FLUID SUMMARY**

Coachman Energy LLC

**S14-15S-20W Ellis Co, KS**

1125 17th St Suite 410  
Denver Co, 80202

**Penny #1-14-15-20**

Job Ticket: 63518

**DST#: 1**

ATTN: Charlie Sturdavant/

Test Start: 2017.03.23 @ 20:35:00

## Mud and Cushion Information

Mud Type: Gel Chem

Cushion Type:

Oil API:

deg API

Mud Weight: 9.00 lb/gal

Cushion Length:

ft

Water Salinity:

ppm

Viscosity: 50.00 sec/qt

Cushion Volume:

bbbl

Water Loss: 7.60 in<sup>3</sup>

Gas Cushion Type:

Resistivity: ohm.m

Gas Cushion Pressure:

psig

Salinity: 9600.00 ppm

Filter Cake: inches

## Recovery Information

Recovery Table

Length ft	Description	Volume bbbl
12.00	GOCM 5% G 5%O 90%M	0.168
60.00	OCM 5%O 95%M	0.842
30.00	GMO 30%G 20%M 50%O	0.421
120.00	MCO 20%M 80%O	1.683
40.00	OGCM 5%O 35%G 60%M	0.561

Total Length: 262.00 ft

Total Volume: 3.675 bbl

Num Fluid Samples: 0

Num Gas Bombs: 0

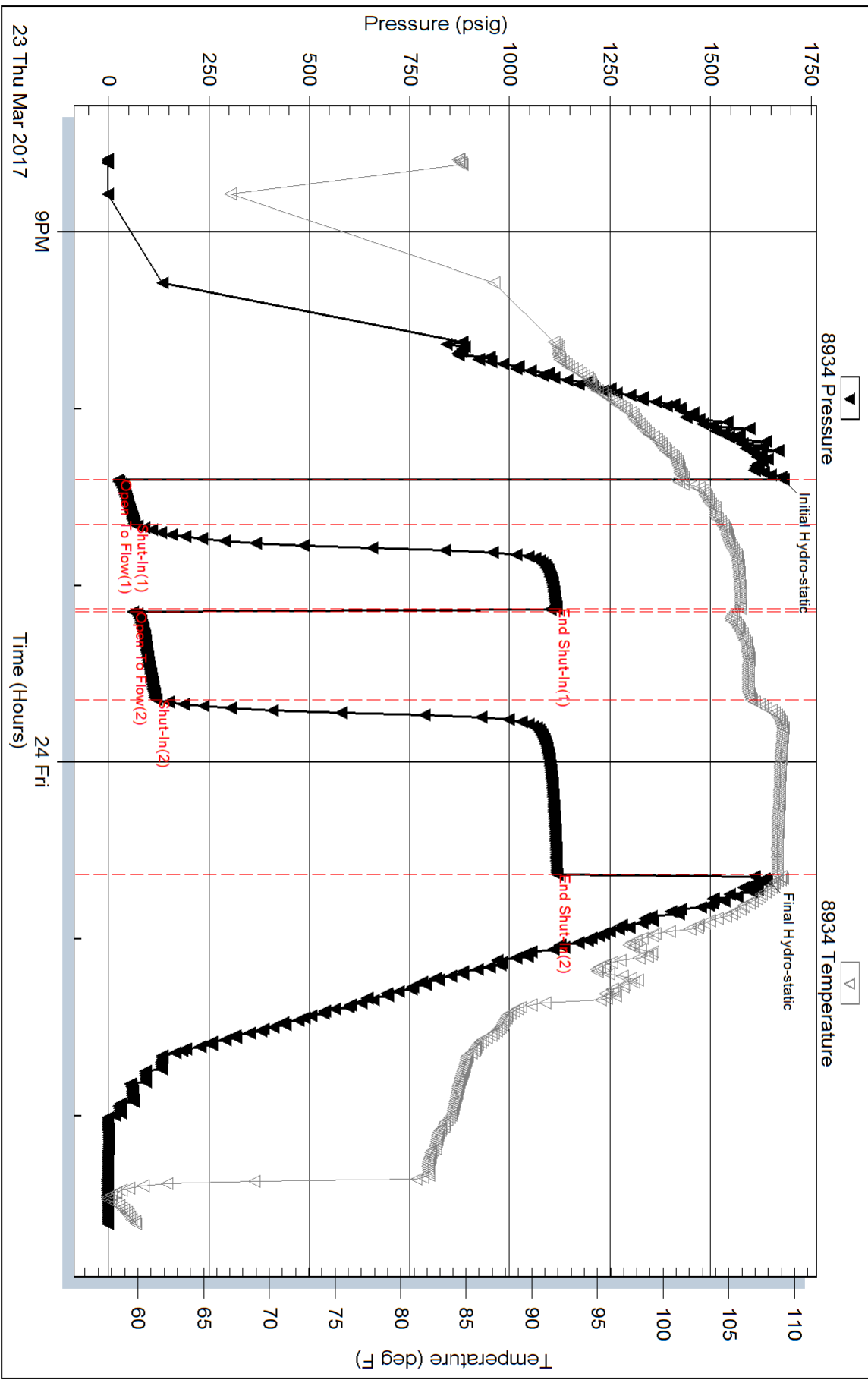
Serial #:

Laboratory Name:

Laboratory Location:

Recovery Comments: 2# LCM

# Pressure vs. Time



Serial #: 9120

Inside

Coachman Energy LLC

Penny #1-14-15-20

DST Test Number: 1

