



## DRILL STEM TEST REPORT

Prepared For: **Pickrell Drilling Co. Inc.**

100 S Main STE 505  
Wichita KS 67202+3738

ATTN: Aaron Young/ Larry R

**Albin 'I' #3**

**28-14S-27W Gove,KS**

Start Date: 2016.11.10 @ 18:52:00

End Date: 2016.11.11 @ 00:15:15

Job Ticket #: 63496                      DST #: 4

Trilobite Testing, Inc  
PO Box 362 Hays, KS 67601  
ph: 785-625-4778 fax: 785-625-5620

Printed: 2016.11.14 @ 09:08:21



**TRILOBITE  
TESTING, INC**

# DRILL STEM TEST REPORT

Pickrell Drilling Co. Inc.

**28-14S-27W Gove,KS**

100 S Main STE 505  
Wichita KS 67202+3738

**Albin 'I' #3**

Job Ticket: 63496

**DST#: 4**

ATTN: Aaron Young/ Larry R

Test Start: 2016.11.10 @ 18:52:00

## GENERAL INFORMATION:

Formation: **Mississippi**

Deviated: No Whipstock: ft (KB)

Time Tool Opened: 20:53:15

Time Test Ended: 00:15:15

Test Type: Conventional Bottom Hole (Reset)

Tester: Spencer J. Staab

Unit No: 84

**Interval: 4271.00 ft (KB) To 4288.00 ft (KB) (TVD)**

Reference Elevations: 2477.00 ft (KB)

Total Depth: 4288.00 ft (KB) (TVD)

2473.00 ft (CF)

Hole Diameter: 7.88 inches Hole Condition: Fair

KB to GR/CF: 4.00 ft

**Serial #: 8353**

**Inside**

Press@RunDepth: 25.28 psig @ 4272.00 ft (KB)

Capacity: 8000.00 psig

Start Date: 2016.11.10

End Date:

2016.11.11

Last Calib.:

2016.11.11

Start Time:

18:52:15

End Time:

00:15:15

Time On Btm:

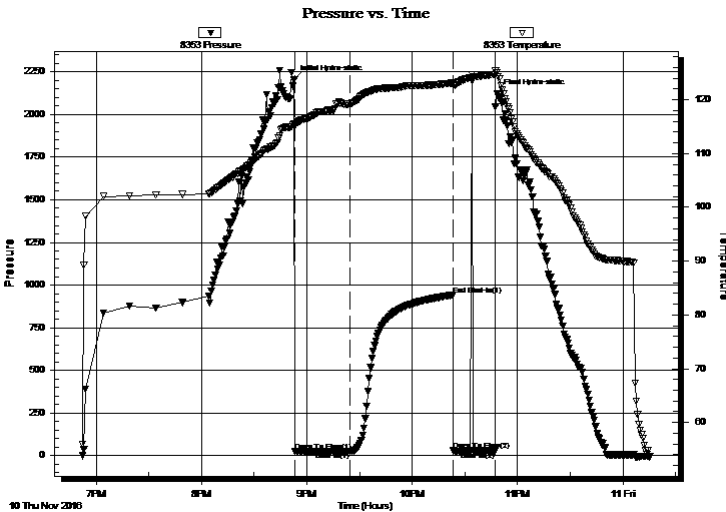
2016.11.10 @ 20:52:45

Time Off Btm:

2016.11.10 @ 22:48:15

**TEST COMMENT:** 30-IF-Very Weak Surface Blow ; Built to 1"  
60-ISI-No Blow Back  
15-FF-No Blow ; Flushed tool; Still no Blow ; pulled tool

## PRESSURE SUMMARY



Time (Min.)	Pressure (psig)	Temp (deg F)	Annotation
0	2203.61	115.53	Initial Hydro-static
1	26.49	115.20	Open To Flow (1)
32	25.28	119.20	Shut-In(1)
91	941.44	123.10	End Shut-In(1)
91	29.06	122.78	Open To Flow (2)
115	27.51	124.70	Shut-In(2)
116	2123.95	125.09	Final Hydro-static

## Recovery

Length (ft)	Description	Volume (bbl)
1.00	MCO 5% M 95% O	0.01
20.00	Mud 100% M	0.28

## Gas Rates

	Choke (inches)	Pressure (psig)	Gas Rate (Mcf/d)

\* Recovery from multiple tests





**TRILOBITE  
TESTING, INC**

# DRILL STEM TEST REPORT

**TOOL DIAGRAM**

Pickrell Drilling Co. Inc.

**28-14S-27W Gove,KS**

100 S Main STE 505  
Wichita KS 67202+3738

**Albin 'I' #3**

Job Ticket: 63496

**DST#: 4**

ATTN: Aaron Young/ Larry R

Test Start: 2016.11.10 @ 18:52:00

## Tool Information

Drill Pipe:	Length: 4252.00 ft	Diameter: 3.80 inches	Volume: 59.64 bbl	Tool Weight:	2500.00 lb
Heavy Wt. Pipe:	Length: 0.00 ft	Diameter: 0.00 inches	Volume: 0.00 bbl	Weight set on Packer:	25000.00 lb
Drill Collar:	Length: 0.00 ft	Diameter: 2.25 inches	Volume: 0.00 bbl	Weight to Pull Loose:	53000.00 lb
			<u>Total Volume: 59.64 bbl</u>	Tool Chased	ft
Drill Pipe Above KB:	9.00 ft			String Weight: Initial	52000.00 lb
Depth to Top Packer:	4271.00 ft			Final	52000.00 lb
Depth to Bottom Packer:	ft				
Interval between Packers:	17.00 ft				
Tool Length:	45.00 ft				
Number of Packers:	1	Diameter: 6.75 inches			

Tool Comments:

## Tool Description

Tool Description	Length (ft)	Serial No.	Position	Depth (ft)	Accum. Lengths
Change Over Sub	1.00			4244.00	
Shut In Tool	5.00			4249.00	
Hydraulic tool	5.00			4254.00	
Jars	5.00			4259.00	
Safety Joint	3.00			4262.00	
Packer	5.00			4267.00	28.00 Bottom Of Top Packer
Packer	4.00			4271.00	
Stubb	1.00			4272.00	
Recorder	0.00	9120	Outside	4272.00	
Recorder	0.00	8353	Inside	4272.00	
Perforations	12.00			4284.00	
Bullnose	4.00			4288.00	17.00 Bottom Packers & Anchor

**Total Tool Length: 45.00**



**TRILOBITE  
TESTING, INC**

# DRILL STEM TEST REPORT

**FLUID SUMMARY**

Pickrell Drilling Co. Inc.

**28-14S-27W Gove,KS**

100 S Main STE 505  
Wichita KS 67202+3738

**Albin 'I' #3**

Job Ticket: 63496

**DST#: 4**

ATTN: Aaron Young/ Larry R

Test Start: 2016.11.10 @ 18:52:00

## Mud and Cushion Information

Mud Type: Gel Chem

Cushion Type:

Oil API:

42 deg API

Mud Weight: 9.00 lb/gal

Cushion Length:

ft

Water Salinity:

ppm

Viscosity: 52.00 sec/qt

Cushion Volume:

bbbl

Water Loss: 9.19 in<sup>3</sup>

Gas Cushion Type:

Resistivity: ohm.m

Gas Cushion Pressure:

psig

Salinity: 3000.00 ppm

Filter Cake: inches

## Recovery Information

Recovery Table

Length ft	Description	Volume bbl
1.00	MCO 5% M 95% O	0.014
20.00	Mud 100% M	0.281

Total Length: 21.00 ft      Total Volume: 0.295 bbl

Num Fluid Samples: 0

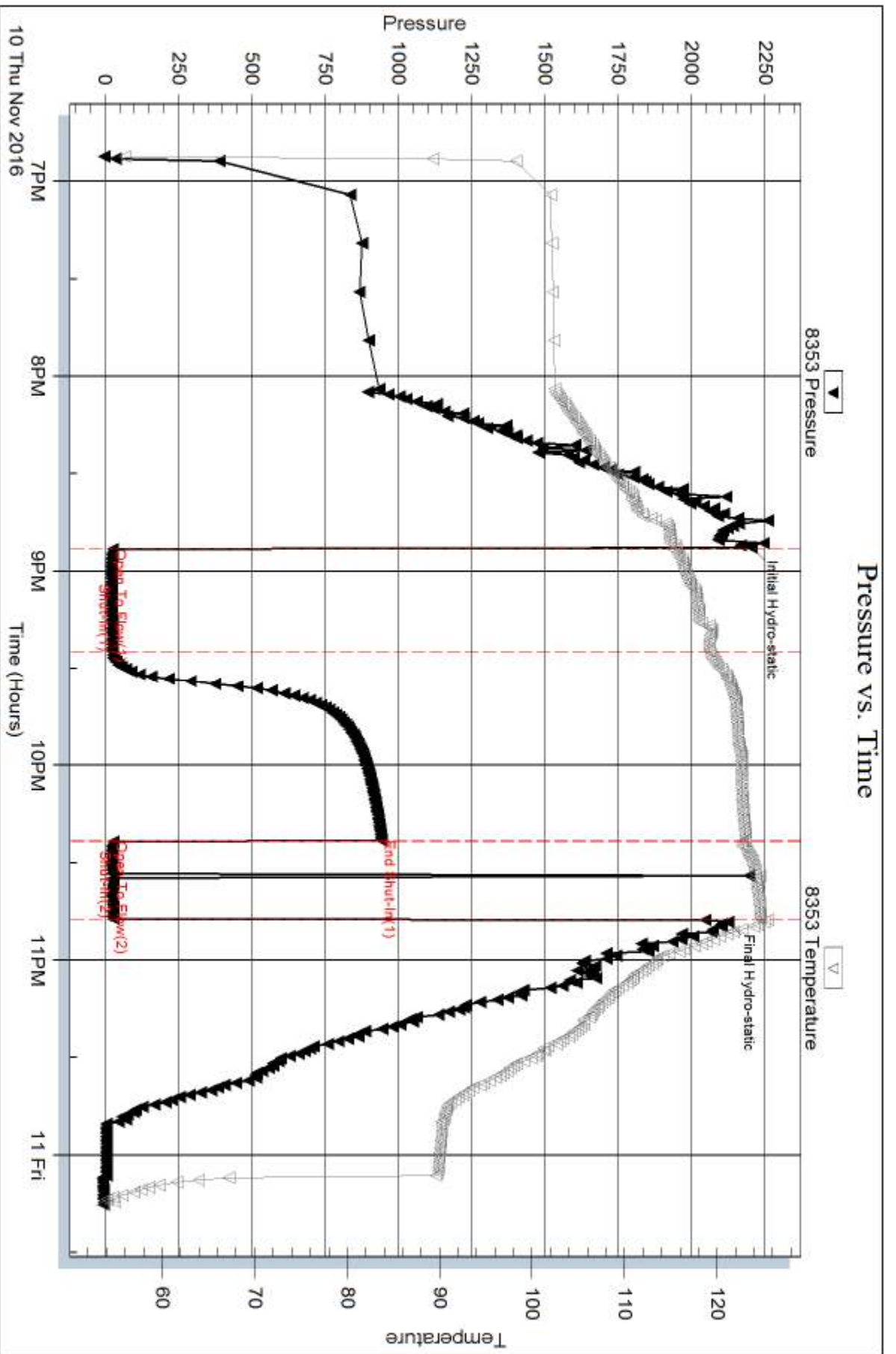
Num Gas Bombs: 0

Serial #:

Laboratory Name:

Laboratory Location:

Recovery Comments:

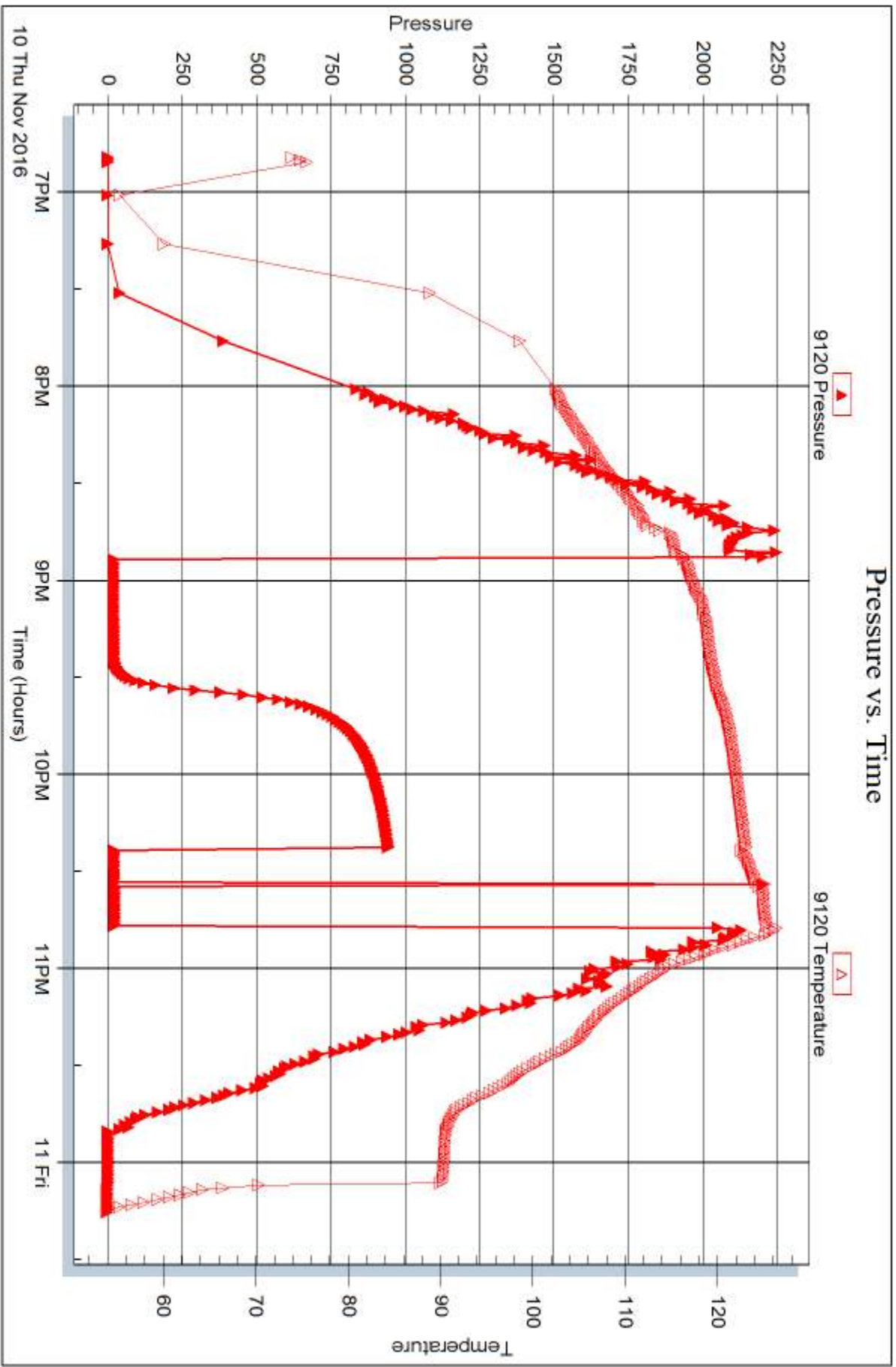


Serial #: 9120

Outside Pickett Drilling Co. Inc.

Albin T#3

DST Test Number: 4



Trilobite Testing, Inc

Ref. No: 63496

Printed: 2016.11.14 @ 09:08:23