

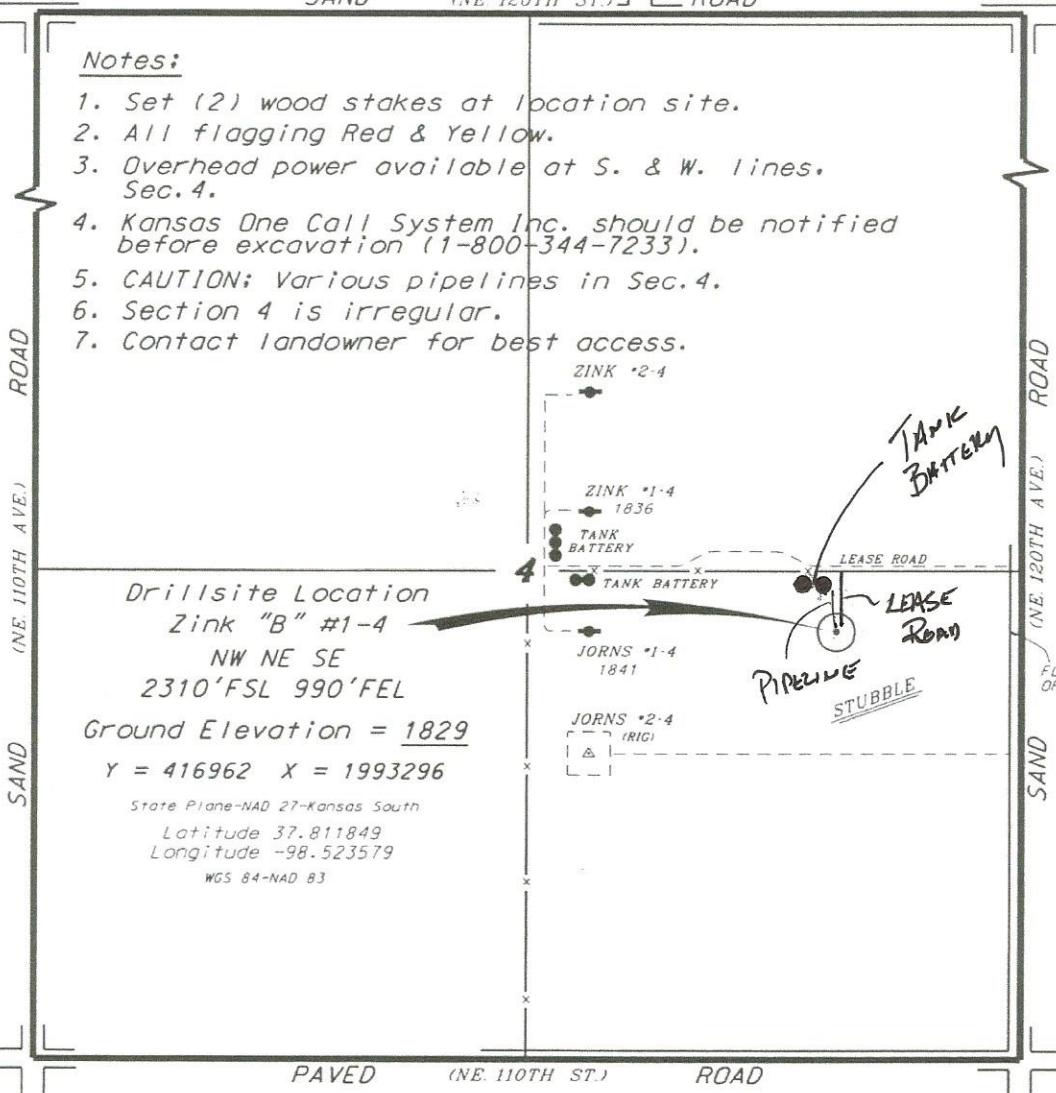
DEUTSCH OIL COMPANY
ZINK LEASE
SE.1/4, SECTION 4, T26S, R11W
PRATT COUNTY, KANSAS

SAND (NE 120TH ST.) ROAD

Notes:

1. Set (2) wood stakes at location site.
2. All flagging Red & Yellow.
3. Overhead power available at S. & W. lines, Sec. 4.
4. Kansas One Call System Inc. should be notified before excavation (1-800-344-7233).
5. CAUTION: Various pipelines in Sec. 4.
6. Section 4 is irregular.
7. Contact landowner for best access.

*Ingress and egress to location as shown on this plat is for public use only and may not be legally opened for public use. Contact landowner, tenant and county road department for access.



Drillsite Location
Zink "B" #1-4
NW NE SE
2310' FSL 990' FEL

Ground Elevation = 1829

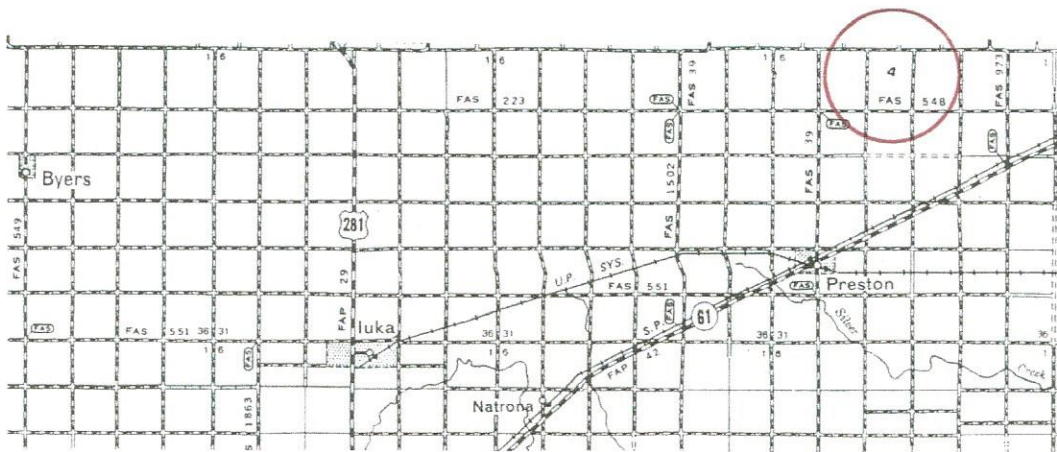
Y = 416962 X = 1993296

State Plane-NAD 27-Kansas South

Latitude 37.811849

Longitude -98.523579

WGS 84-NAD 83



* Controlling data is based upon the best maps and photographs available to us and upon a regular section of land containing 640 acres.
 * Approximate section lines were determined using the normal standard of care of oilfield surveyors practicing in the state of Kansas. The section corners, which establish the precise section lines, were not necessarily located, and the exact location of the drillsite location in the section is not guaranteed. Therefore, the operator securing this service and accepting this plat and all other parties relying thereon agree to hold Central Kansas Oilfield Services, Inc., its officers and employees harmless from all losses, costs and expenses and said entities released from any liability from incidental or consequential damages.
 * Elevations derived from National Geodetic Vertical Datum.

Date April 6, 2017

CENTRAL KANSAS OILFIELD SERVICES, INC. (620)792-1977

