

**FOSSIL RESOURCES, LLC  
PLUMMER LEASE  
SE. 1/4, SECTION 11, T13S, R36W  
LOGAN COUNTY, KANSAS**

GRAVEL (RAWHIDE ROAD) ROAD

**Notes:**

1. Set iron rod at location site.
2. All flagging Red & Yellow.
3. Overhead power available at N. & W. lines, Sec. 11.
4. Kansas One Call System Inc. should be notified before excavation (1-800-344-7233).
5. CAUTION: Various pipelines in Sec. 11.
6. Cattle in area at date of staking.
7. Contact landowner for best access.
8. Location fell in bluffs south of the North Fork Smoky Hill River, set alternate 150' south per instructions.

**Drillsite Location  
Plummer #1**

2058'FSL 1391'FEL

Ground Elevation = 2993

Y = 237468 X = 1066650

State Plane-NAD 27-Kansas North

Latitude 38.938915

Longitude -101.282370

WGS 84-NAD 83

**\*Alternate Location**

(150' south of Loc.)

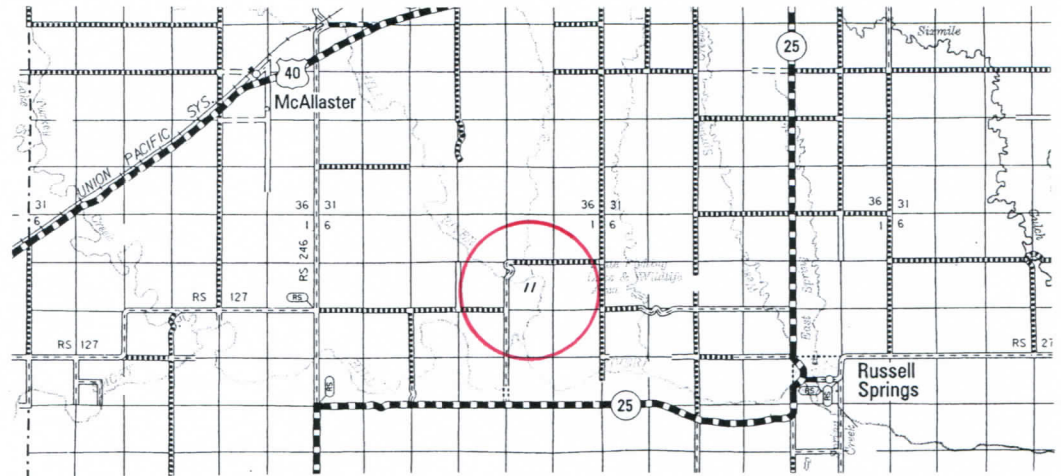
1908'FSL 1391'FEL

Ground Elevation = 3008

Y = 237318 X = 1066643

Latitude 38.938506

Longitude -101.282419



\* Ingress and egress to location as shown on this plat is for public use only and may not be legally opened for public use. Contact landowner, tenant and county road department for access.



• Controlling data is based upon the best maps and photographs available to us and upon a regular section of land containing 640 acres.  
 • Approximate section lines were determined using the normal standard of care of oilfield surveyors practicing in the state of Kansas. The section corners, which establish the precise section lines, were not necessarily located, and the exact location of the drillsite location in the section is not guaranteed. Therefore, the operator securing this service and accepting this plat and all other parties relying thereon agree to hold Central Kansas Oilfield Services, Inc., its officers and employees harmless from all losses, costs and expenses and said entities released from any liability from incidental or consequential damages.  
 • Elevations derived from National Geodetic Vertical Datum.

Date April 7, 2017