

# KIM B. SHOEMAKER

CONSULTING GEOLOGIST

316-634-9709 \* WICHITA, KS

## GEOLOGIST'S REPORT

DRILLING TIME AND SAMPLE LOG

COMPANY L.D. DRILLING, INC.  
 LEASE #1-15 DEEDS  
 FIELD WILDCAT  
 LOCATION 2254' FSL & 1978' FEL  
 SEC 15 TWP 5s RGE 37W  
 COUNTY CHEYENNE STATE KANSAS  
 CONTRACTOR L.D. DRILLING, INC.  
 SPUD 3-6-17 COMP 3-17-17  
 RTD 5050 LTD 5048  
 MUD UP 3537 TYPE MUD CHEMICAL

ELEVATIONS  
 KB 3400  
 DF \_\_\_\_\_  
 GI 3395  
 Measurements Are All  
 From 3400 KB  
 CASING  
 SURFACE 8 5/8" @ 348'  
 PRODUCTIONS \_\_\_\_\_  
 ELECTRICAL SURVEYS  
 Dual IND, DENS-N, Merc

SAMPLES SAVED FROM 3800 TO 5050  
 DRILLING TIME KEPT FROM 3700 TO 5050  
 SAMPLES EXAMINED FROM 3800 TO 5050  
 GEOLOGICAL SUPERVISION FROM 4000 TO 5050  
 GEOLOGIST ON WELL KIM B. SHOEMAKER

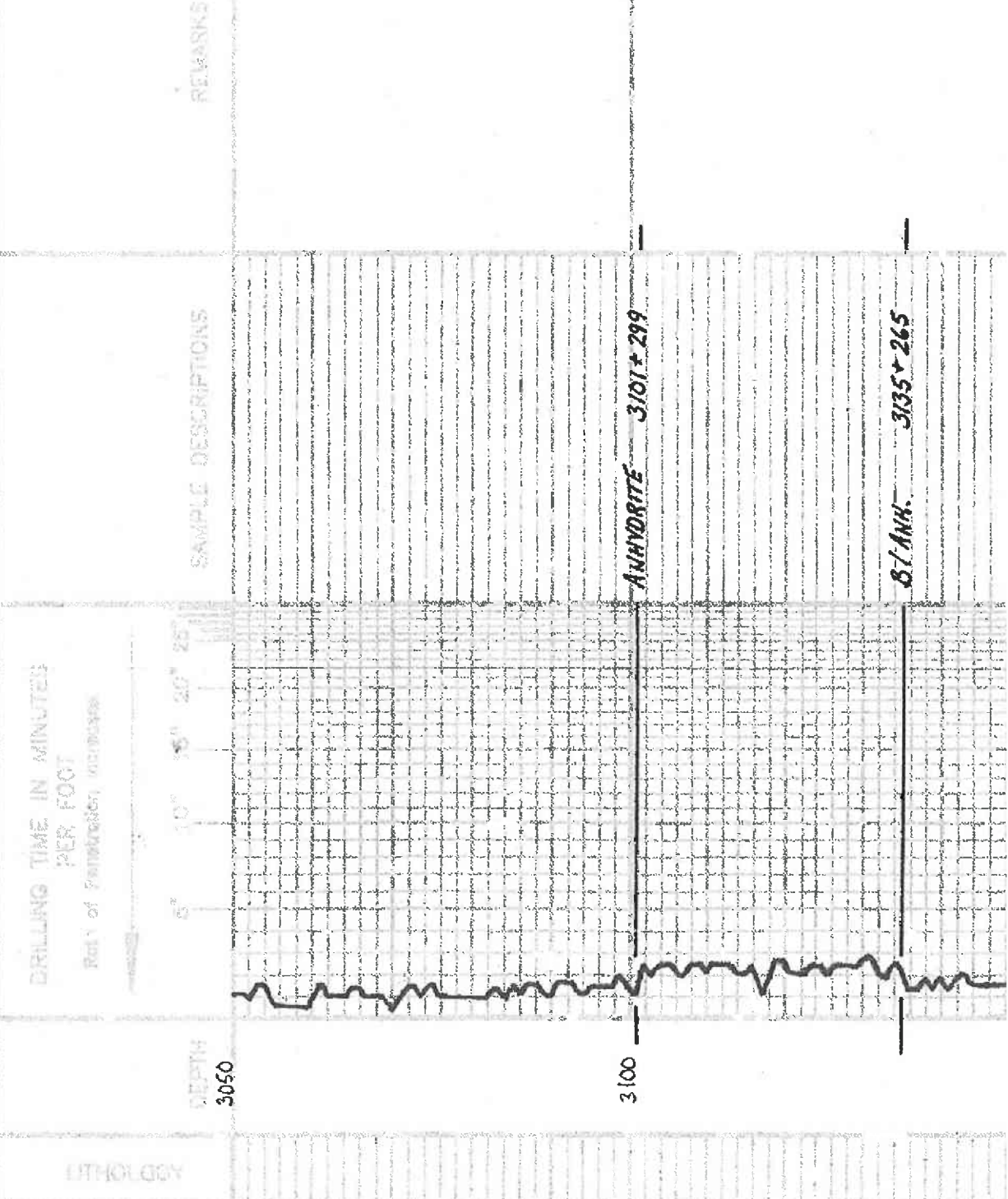
FORMATION TOPS	LOG	SAMPLES
ANHYDRITE	3097-303	3101+ 299
B/ ANH.	3132+ 268	3135+ 265
STOTLER	3932-532	3932- 532
HEEBNER	4212- 812	4213- 813
LANSING	4262- 862	4264- 864
B/KC	4522-1122	4525- 1125
PAWNEE	4652-1252	4652- 1252
FORT SCOTT	4705- 1305	4706- 1306
CHEROKEE	4729- 1329	4731- 1331
MISSISSIPPI	4952- 1552	4952- 1552

API: 15-023-21461

REMARKS:  
 3-6-17 SPUD  
 3-7 @ 353'  
 3-8 @ 1600'  
 3-9 @ 2660'  
 3-10 @ 3319'  
 3-11 @ 3855'  
 3-12 @ 4257'  
 3-13 @ 4160'  
 3-14 @ 4600'  
 3-15 @ 4670'  
 3-16 @ 4956'  
 3-17 @ 5050'

### LEGEND

- Dolomite
- Sandstone
- Siltstone
- Carbonate
- Unconsolidated
- Shell
- Gypsum
- Anhydrite



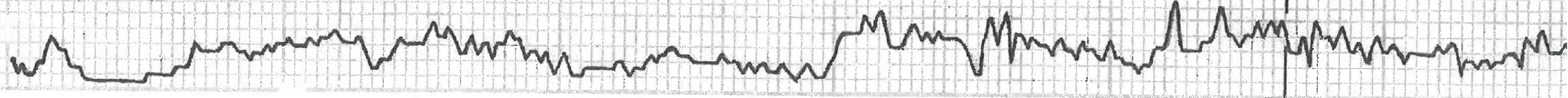


3150

3700

3800

3900



MS: 53  
 WT: 89  
 MS: 6-4  
 P: 1500

Samples are bagged

15.0g 50.0g 50.0g 50.0g 50.0g

Sh. Rd.

STOTLER 3932-532

15. 44g 50.0g

Sh. Rd. Pumps

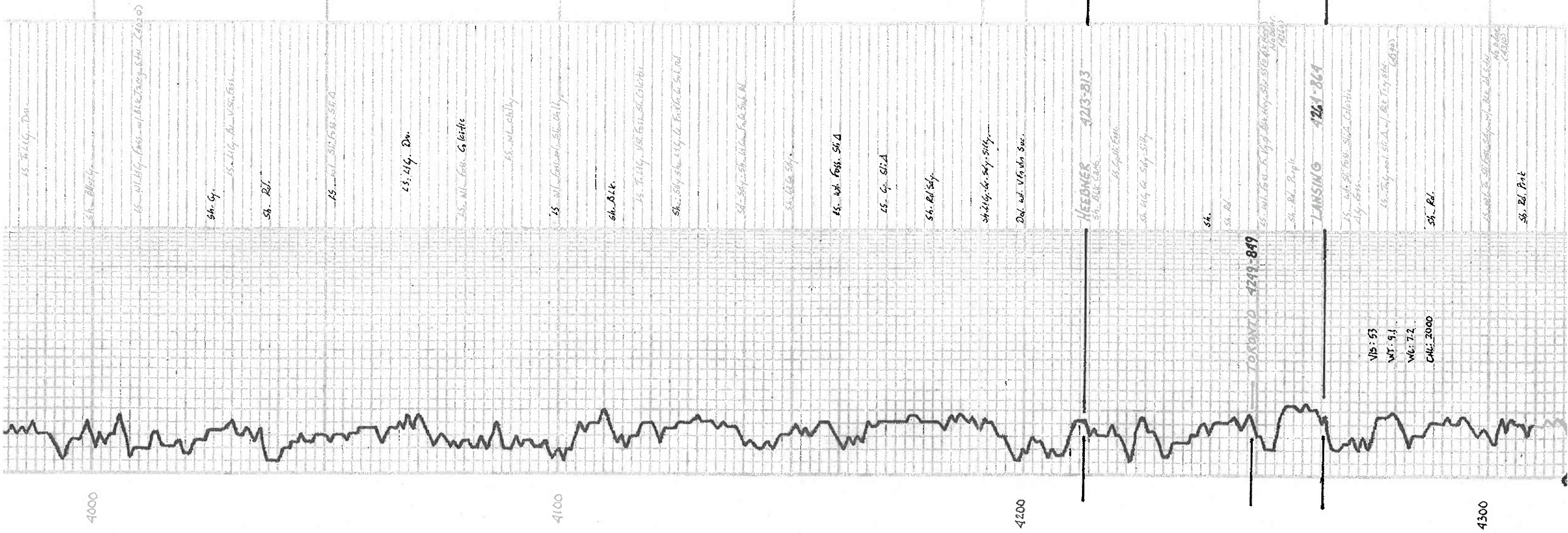
15. High St. Foss. Sil. Sully. ~~44g~~

Sh. Rd.

15. 41.5g Foss w/ld Rix St. (3980)

Sh. Rd. Bank





ls. F. Llg. ... Dat.

sh. Blacky

ls. w/ Llg. Foss. w/ Bl. & Tan. Sh. (4020)

sh. Gy.

ls. Llg. Bl. w/ sh. Foss.

sh. Bl.

ls. w/ Bl. Foss. Sh. A.

ls. Llg. Dn.

ls. w/ Foss. & little

ls. w/ sh. Llg.

ls. w/ Foss. w/ sh. Llg.

sh. Bl.

ls. F. Llg. w/ Foss. sh. Colonic

sh. Sil. sh. Llg. & Foss. & Sil. Bl.

sh. Sil. sh. Llg. & Foss. & Sil. Bl.

sh. Bl. & sh.

ls. w/ Foss. Sh. A.

ls. Gy. Sh. A.

sh. Bl. Sil.

sh. Llg. sh. Sil. Sil.

Dol. w/ V. in Sec.

HEEDNER 4213-213  
sh. Bl. Calc.

ls. Gy. Foss.

sh. Llg. & Sil. Sil.

sh.

sh. Bl.

ls. w/ Foss. F. Llg. Bl. w/ sh. Sil. Sh. (4020)

sh. Bl. Purple

LANSING 4261-864

ls. w/ Bl. Foss. Sh. A. Colonic

sh. Bl.

ls. Sil. sh. Llg. & Bl. Llg. sh.

sh. Bl.

ls. w/ Bl. Foss. w/ sh. Sil. Sh. (4020)

sh. Bl. Pink

Vis: 53  
WT: 91  
WC: 72  
CH: 2000







Sh. L. Blue  
**PANNEE 4652-1252**  
 ss. Bl. sh. 1/2" to 1" SCA P. 1/2"  
 1/4" to 3/8" SFB 1/2" to 1" No. 100  
 4000  
 ss. wh. V.S. Foss. Sh. A. w/ R. ch. sil.  
 No. 100  
 ss. wh. L. H. sh. Foss. w/ Dk. Foss.  
 Sh. Bl. ss. A. V.S. Foss.  
 sh. sil.  
 2 1/2" G. Foss.

ss. A.L.S. 3/4" to 1" Foss. 1/2" to 1" w/ R. ch. sil.  
**FORT SCOT 4706-1306**  
 Sh. Bl. G. ch.  
 ss. A. Sil.  
 A. Bl. sh. Sil. Foss.  
 ss. sil. sh. Foss. Sil.

**CHEROKEE 4731-1331**  
 Sh. Bl. G. ch.  
 ss. wh. sh. 1/2" to 1" Foss.  
 A. sil.  
 ss. wh. sh.

Sh. L. sh. Blue  
 ss. P. Bl. Sil.  
 Sh. L. Blue. Purple  
 sh. 3/8" to 1/2" Bl. G. Sil. Bl.  
 ss. Bl. G. ch.

ss. wh. Bl. G. Bl. Sil. Bl. Foss. ch.  
 sh. Foss. Foss. sil.  
 Sh. L. Purple. Sh. G. G. sil. Bl.  
 sh. sil. G. ch. w/ Bl. G. Sil. Bl.

ss. wh. sh.  
 sh. A. Blue. sh. wh. G. Sil. Bl.  
 ss. wh. sh. 1/2" to 1" Foss. - Caliche

sh. Yellow. Sil. Bl. sh. wh. G. Sil. Bl.  
 sil. G. ch. - ALG. G. Sil. Bl.  
 sh. Yellow. G. Bl.

sh. G. wh. G. - G. wh. G. L. Sil. Bl. Purple. Sil.  
 sh. Yellow. Bl. G. - Bl.

sh. Blue. sh. G. ch.  
 sh. Bl. sh. wh. sh. sil. sil. G. ch. G. ch.  
 sh. G. ch.

**MISSISSIPPI 4952-1262**  
 sh. G. wh. - Yellow. Bl. G. ch.  
 sh. wh. G. ch.

sh. G. ch.  
 sh. G. wh. - Yellow. Bl. G. ch.  
 sh. wh. G. ch.

sh. G. ch. - Yellow. Bl. G. ch.

VIS: 60  
 WT: 93  
 V#: 72  
 CAT: 3400

