



**TRILOBITE
TESTING, INC.**

DRILL STEM TEST REPORT

Darrah, John Jay, JR.

4/17S/10E Lyon, Ks

P.O. Box 2786
Wichita, Ks
67201

Lee #1

Job Ticket: 63086

DST#: 1

ATTN: Will Darrah

Test Start: 2016.11.12 @ 22:49:00

GENERAL INFORMATION:

Formation: **Hunton**

Deviated: No Whipstock: ft (KB)

Time Tool Opened: 00:20:45

Time Test Ended: 04:26:45

Test Type: Conventional Bottom Hole (Initial)

Tester: Jimmy Ricketts

Unit No: 80

Interval: 2840.00 ft (KB) To 2850.00 ft (KB) (TVD)

Reference Elevations: 1255.00 ft (KB)

Total Depth: 2850.00 ft (KB) (TVD)

1246.00 ft (CF)

Hole Diameter: 7.88 inches Hole Condition: Fair

KB to GR/CF: 9.00 ft

Serial #: 6798

Press @ Run Depth: 20.98 psig @ ft (KB)

Capacity: 8000.00 psig

Start Date: 2016.11.12

End Date:

2016.11.13

Last Calib.:

1899.12.30

Start Time: 22:49:05

End Time:

04:26:44

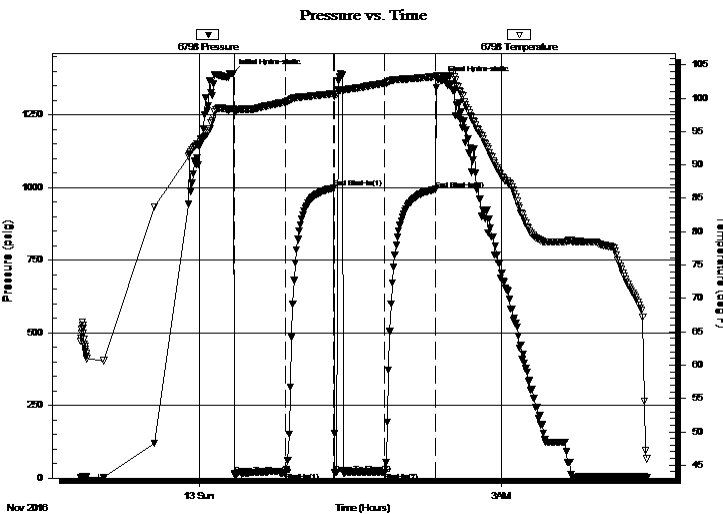
Time On Btm:

2016.11.13 @ 00:19:30

Time Off Btm:

2016.11.13 @ 02:23:45

TEST COMMENT: IF - Surface blow throughout initial flow period.
FF - No blow, flushed tool, still no blow throughout final flow period.



PRESSURE SUMMARY

Time (Min.)	Pressure (psig)	Temp (deg F)	Annotation
0	1392.15	98.47	Initial Hydro-static
2	13.09	98.10	Open To Flow (1)
32	18.98	99.43	Shut-In(1)
61	997.80	100.70	End Shut-In(1)
61	17.61	100.45	Open To Flow (2)
91	20.98	102.23	Shut-In(2)
121	993.34	103.25	End Shut-In(2)
125	1369.17	103.30	Final Hydro-static

Recovery

Length (ft)	Description	Volume (bbl)
15.00	Oil spotted mud 1% O & 99% M	0.07

Gas Rates

	Choke (inches)	Pressure (psig)	Gas Rate (Mcf/d)



**TRILOBITE
TESTING, INC.**

DRILL STEM TEST REPORT

Darrah, John Jay, JR.

4/17S/10E Lyon, Ks

P.O. Box 2786
Wichita, Ks
67201
ATTN: Will Darrah

Lee #1
Job Ticket: 63086 **DST#: 1**
Test Start: 2016.11.12 @ 22:49:00

GENERAL INFORMATION:

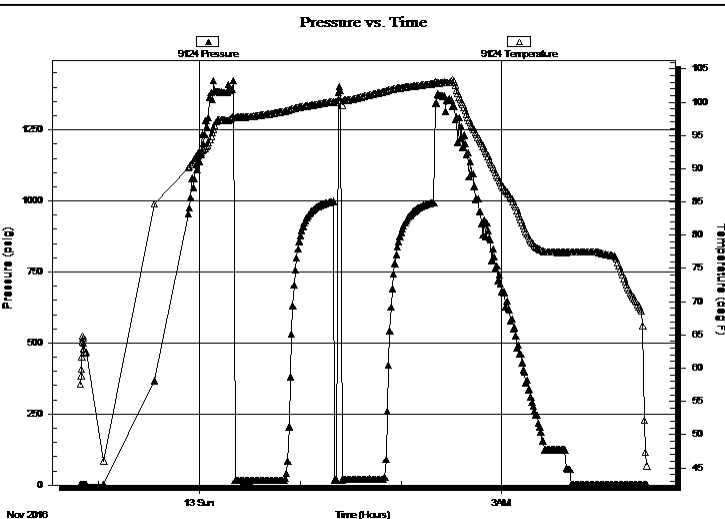
Formation: **Hunton**
Deviated: No Whipstock: ft (KB) Test Type: Conventional Bottom Hole (Initial)
Time Tool Opened: 00:20:45 Tester: Jimmy Ricketts
Time Test Ended: 04:26:45 Unit No: 80

Interval: 2840.00 ft (KB) To 2850.00 ft (KB) (TVD) Reference Elevations: 1255.00 ft (KB)
Total Depth: 2850.00 ft (KB) (TVD) 1246.00 ft (CF)
Hole Diameter: 7.88 inches Hole Condition: Fair KB to GR/CF: 9.00 ft

Serial #: 9124

Press@RunDepth: psig @ ft (KB) Capacity: 8000.00 psig
Start Date: 2016.11.12 End Date: 2016.11.13 Last Calib.: 1899.12.30
Start Time: 22:49:05 End Time: 04:26:29 Time On Btm:
Time Off Btm:

TEST COMMENT: IF - Surface blow throughout initial flow period.
FF - No blow, flushed tool, still no blow throughout final flow period.



PRESSURE SUMMARY

Time (Min.)	Pressure (psig)	Temp (deg F)	Annotation

Recovery

Length (ft)	Description	Volume (bbl)
15.00	Oil spotted mud 1% O & 99% M	0.07

Gas Rates

	Choke (inches)	Pressure (psig)	Gas Rate (Mcf/d)

