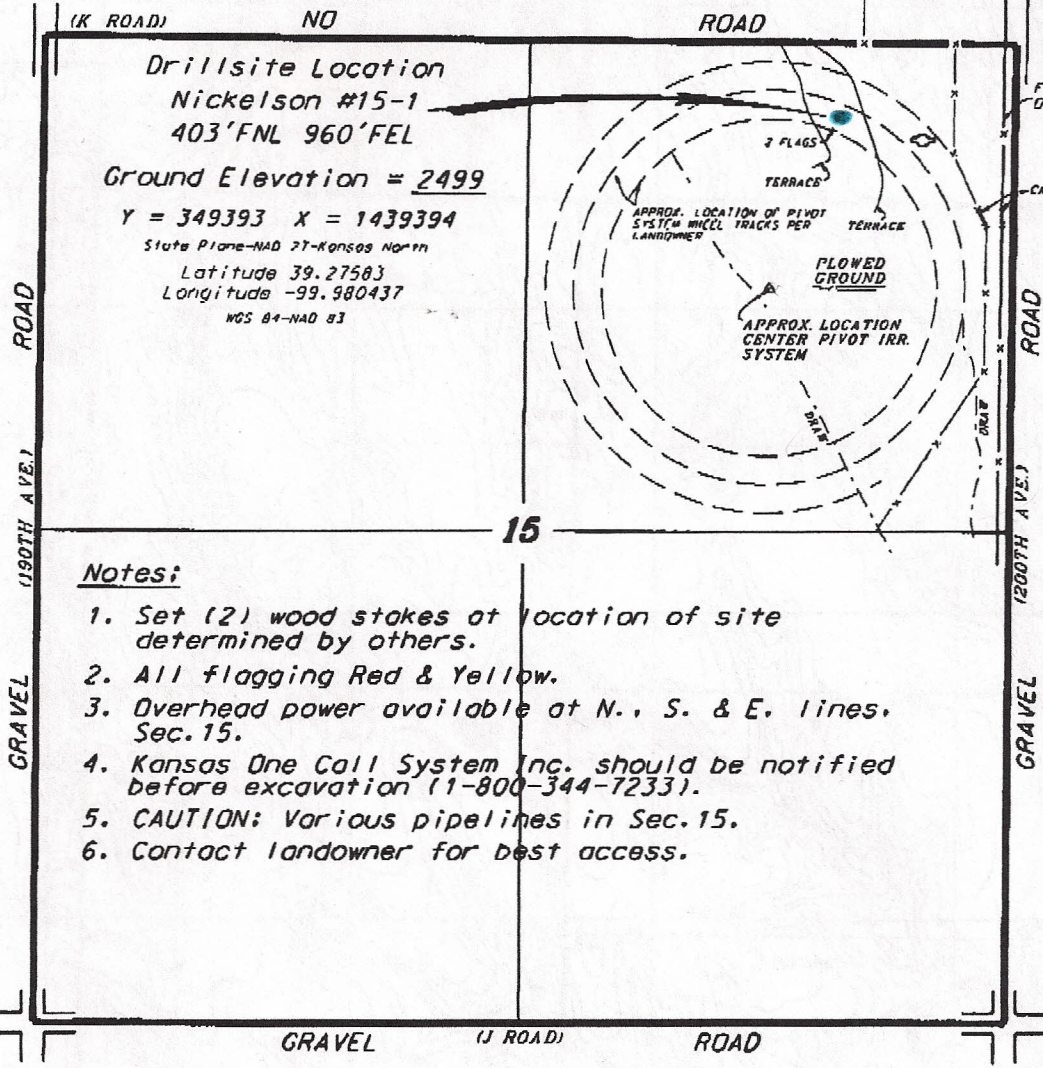


**RON'S OIL OPERATIONS, INC.
NICKELSON LEASE
NE. 1/4, SECTION 15, T9S, R24W
GRAHAM COUNTY, KANSAS**

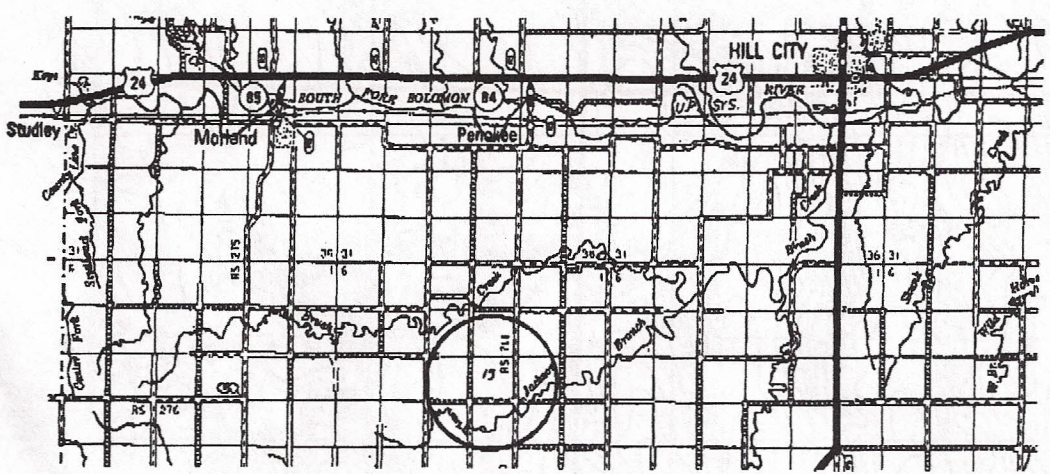


Drillsite Location
Nickelson #15-1
403'FNL 960'FEL
Ground Elevation = 2499
Y = 349393 X = 1439394
 State Plane-NAD 27-KANSAS NORTH
 Latitude 39.27583
 Longitude -99.980437
 NGS 84-NAD 83

Notes:

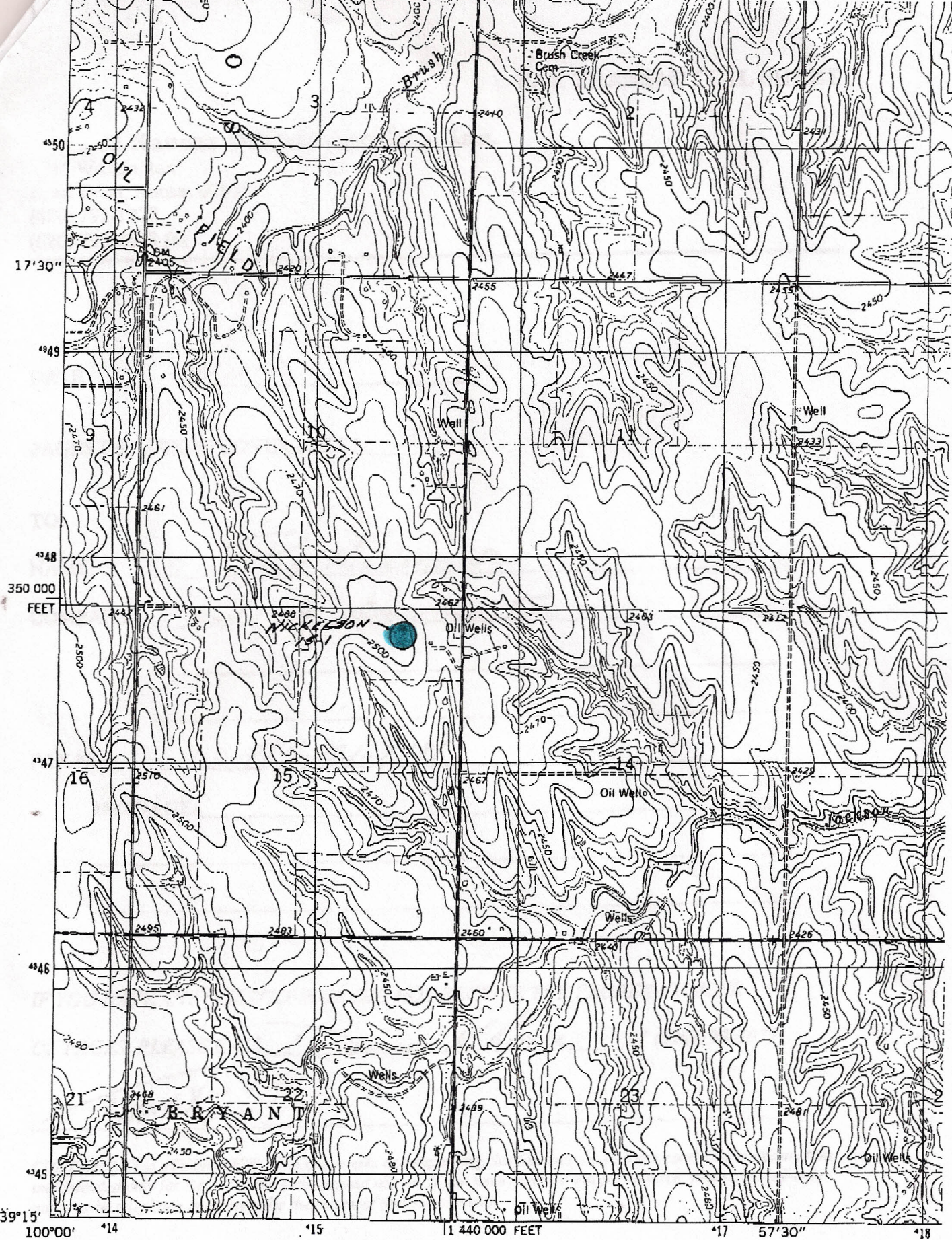
1. Set (2) wood stakes at location of site determined by others.
2. All flagging Red & Yellow.
3. Overhead power available at N., S. & E. lines, Sec. 15.
4. Kansas One Call System Inc. should be notified before excavation (1-800-344-7233).
5. CAUTION: Various pipelines in Sec. 15.
6. Contact landowner for best access.

*Ingress and egress to location as shown on this plan is for usage only and may not be legally opened for public use. Contact landowner, tenant and county road department for access.



• Controlling data is based upon the best maps and photographs available to us and upon a regular section of land containing 640 acres.
 • Approximate section lines were determined using the normal standards of care of oilfield surveyors practicing in the state of Kansas. The section corners, which establish the precise section lines, were not necessarily located, and the exact location of the drillsite location in the section is not guaranteed. Therefore, the operator securing this service and occupying this plot and all other parties relying thereon agree to hold Central Kansas Oilfield Services, Inc., its officers and employees harmless from all losses, costs and expenses and said entities released from any liability from incidental or consequential damages.
 • Elevations derived from National Geodetic Vertical Datum.

Date April 7, 2017



Mapped, edited, and published by the Geological Survey

Control by USGS and NOS/NOAA

Topography by photogrammetric methods from aerial photographs taken 1974. Field checked 1975. Map edited 1979

Projection and 10,000-foot erid ticks: Kansas coordinate

ST. PETERI
5822 II HE

