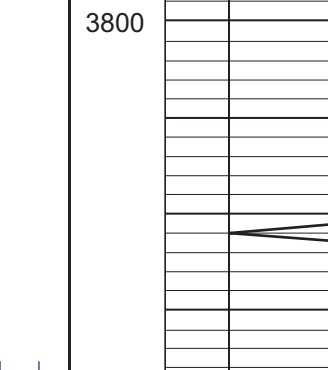


GEOLOGIST'S REPORT
DRILLING TIME AND SAMPLE LOG

COMPANY **SHAKESPEAR OIL CO.** ELEVATIONS
 LEASE **CARBON 2-26** KG 3120'
 FIELD **Petroleum East** DF _____
 LOCATION **2305' FUL 1550' FEL** GL 3112'
 SEC **26** T1MSP **16S** R0E **34W**
 COUNTY **Scott** STATE **Kansas** Measurements Are All From **KB**
 CONTRACTOR **Duke Drilling Rig #2**
 SPUD **3-21-17** COMP **3-30-17**
 RTD **4905'** LTD **4901'** CASING _____
 MUD UP **3600'** TYPE MUD **Chemical** CONDUCTOR **N/A**
 SAMPLES SAVED FROM **3800'** to RTD SURFACE **8-5/8" @ 264'**
 DRILLING TIME KEPT FROM **3800'** to RTD PRODUCTION **None**
 SAMPLES EXAMINED FROM **3800'** to RTD ELECTRICAL SURVEYS **CND/D/SP/PE**
 GEOLOGICAL SUPERVISION FROM **3950'** to RTD GEOLOGIST ON WELL **Tim Priest** By: **Weatherford**

| FORMATION TOPS | ELECTRIC LOG | SAMPLE |
|----------------|--------------|--------------|
| Anyvdrte | 2438 (-700) | 2441 (+697) |
| Heebner Shale | 3980 (-860) | 3985 (-865) |
| Austinrg | 4022 (-902) | 4025 (-905) |
| SBRK | 4308 (-1188) | 4313 (-1193) |
| | 4402 (-1282) | 4405 (-1285) |
| Fort Scott | 4584 (-1464) | 4590 (-1470) |
| Cherokee Shale | 4611 (-1491) | 4616 (-1496) |
| Mississippian | 4820 (-1700) | 4825 (-1705) |



REMARKS Due to the negative drill stem tests, it was decided to plug and abandon the well.

Respectfully Submitted,
 Tim Priest
 Petroleum Geologist

API #15-171-21196-00-00
