

Tim J. Lauer Petroleum Geologist

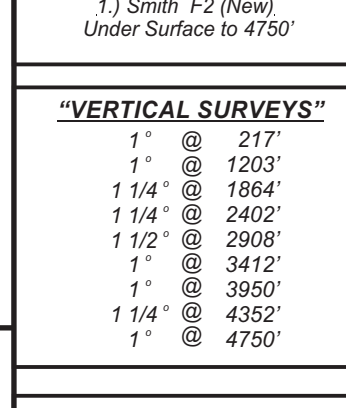
Office 316.832.0530
Cell 316.253.1275

GEOLOGIST'S REPORT DRILLING TIME AND SAMPLE LOG

COMPANY	Cobalt Energy LLC	
LEASE	Brothers 'A' #2-11	
FIELD	2548' FNL, 1504' FWL	
LOCATION	2548' FNL, 1504' FWL	
SEC	11	TWP 20S RGE 33W
COUNTY	Scott	STATE - Kansas
CONTRACTOR	WW Drilling Rig #10	
SPUD	3-22-2017	COMP 3-31-2017
RTD	4750	LTD 4750
MUD UP	3500	TYPE MUD Chemical
SAMPLES SAVED FROM	2500	TO RTD
DRILLING TIME KEPT FROM	2500	TO RTD
SAMPLES EXAMINED FROM	2500	TO RTD
GEOLOGICAL SUPERVISION FROM	2120	TO RTD
GEOLOGIST ON WELL	Tim J. Lauer	

ELEVATIONS	KB 2957
DF	
GL	2952
Measurements Are All	From 2957 KB
CASING	
CONDUCTOR	SURFACE 8 5/8" @ 217'
PRODUCTION	none
ELECTRICAL SURVEYS	Pioneer Stack - DCPL DIL ML Engr. Dan Schmidt

FORMATION TOPS	ELECTRIC LOG	SAMPLE LOG
Anhydrite	2120	(4828)
Kriber	2609	(3448)
Heebner	3808	(-851)
Lansing	3854	(-897)
Cherokee Shale	4452	(-1495)
Morrow Shale	4575	(-1618)
Mississippi	4658	(-1701)
Total Depth	4750	(-1793)

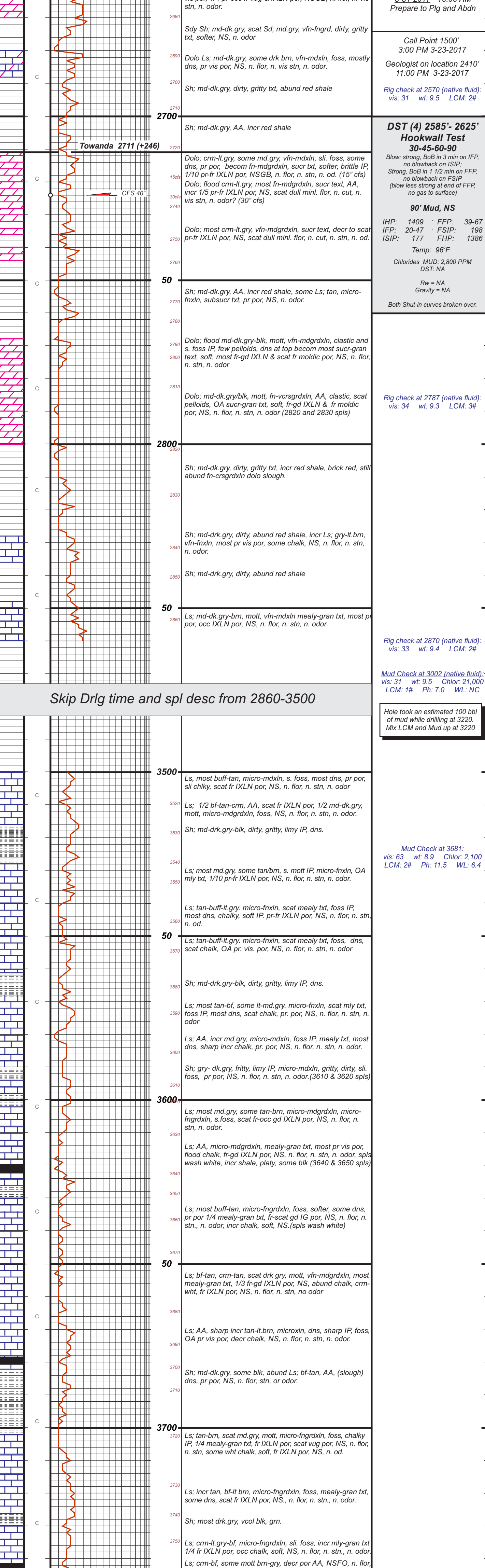


REMARKS
Due to drill stem test results, and log evaluation, operator elected to plug and abandon the location without further testing the location.

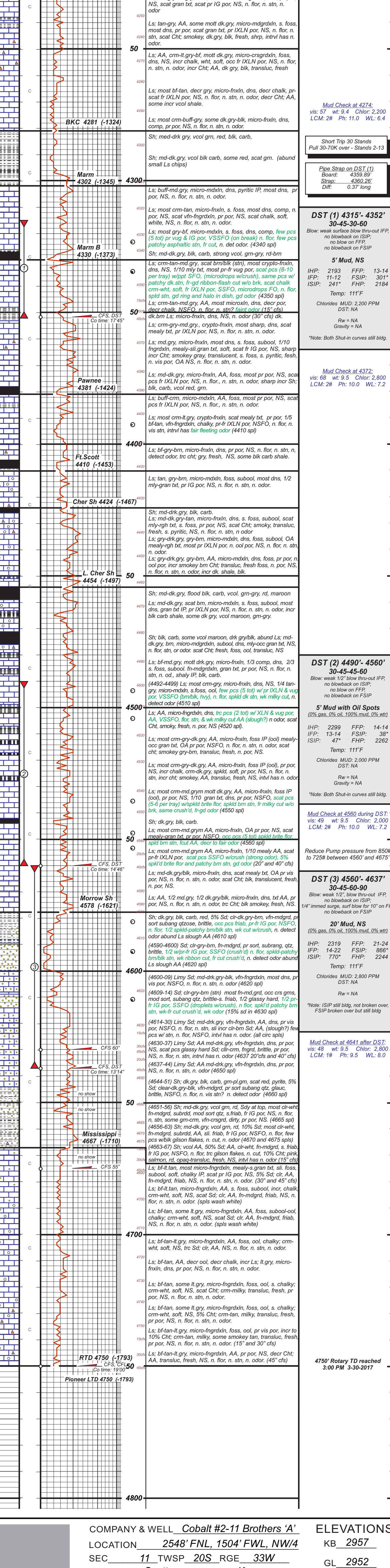
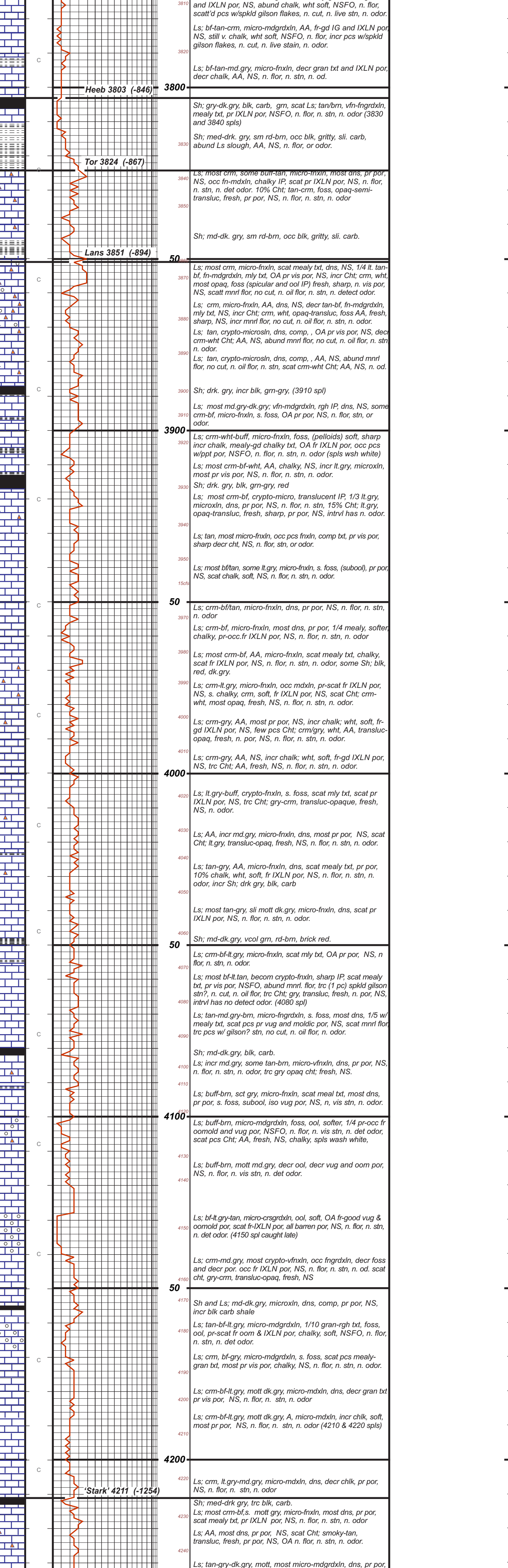
Respectfully submitted,
Tim J. Lauer
3/31/2017

LEGEND

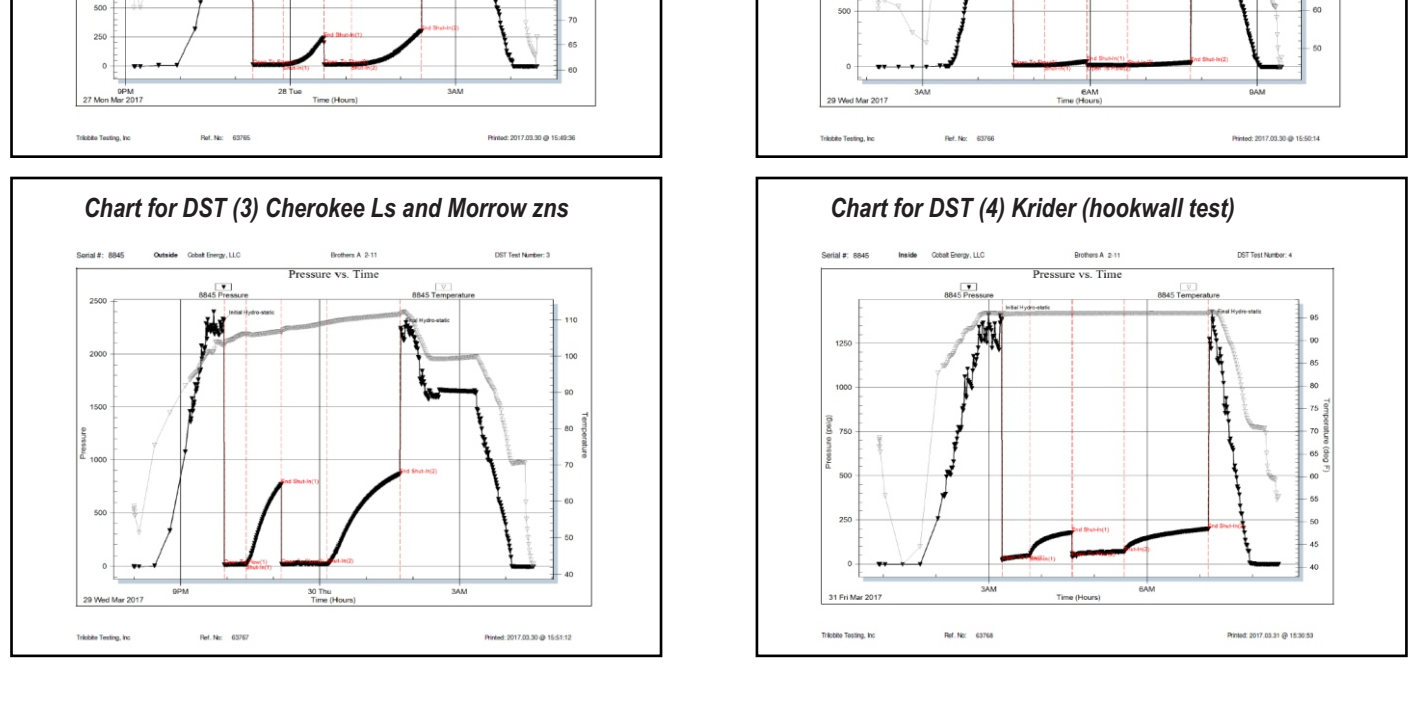
Anhydrite	Sandstone	Limestone	Shale	Carb Sh	Cherty LS	Chert	Dolomite
-----------	-----------	-----------	-------	---------	-----------	-------	----------



Skip Drlg time and spl desc from 2860-3500



COMPANY & WELL	Cobalt #2-11 Brothers 'A'	ELEVATIONS	KB 2957
LOCATION	2548' FNL, 1504' FWL, NW/4	GL	2952
SEC	11	TWP 20S RGE 33W	
COUNTY	Scott	STATE - Ks	



Mud Check at 4641 after DST - vis: 63 wt: 8.9 Chlor: 2.100 LCM: 2# Ph: 11.5 WL: 6.4

Mud Check at 4641 after DST - vis: 63 wt: 8.9 Chlor: 2.100 LCM: 2# Ph: 11.5 WL: 6.4

Mud Check at 4641 after DST - vis: 63 wt: 8.9 Chlor: 2.100 LCM: 2# Ph: 11.5 WL: 6.4

Mud Check at 4641 after DST - vis: 63 wt: 8.9 Chlor: 2.100 LCM: 2# Ph: 11.5 WL: 6.4