



**TRILOBITE TESTING, INC**

# DRILL STEM TEST REPORT

Brehm Asset Management, LLC

**23 19s 31w Scott Ks**

11625 Custer Rd. Ste 110-363  
Frisco, Tx 75053

**Braeden #2**

Job Ticket: 63472

**DST#: 1**

ATTN: Dwight Brehm

Test Start: 2016.12.03 @ 04:59:00

## GENERAL INFORMATION:

Formation: **LKC I, J & K**

Deviated: No Whipstock: ft (KB)

Time Tool Opened: 07:12:00

Time Test Ended: 12:29:30

Test Type: Conventional Bottom Hole (Initial)

Tester: Bradley Walter

Unit No: 78

**Interval: 4270.00 ft (KB) To 4338.00 ft (KB) (TVD)**

Reference Elevations: 2948.00 ft (KB)

Total Depth: 4338.00 ft (KB) (TVD)

2940.00 ft (CF)

Hole Diameter: 7.88 inches Hole Condition: Good

KB to GR/CF: 8.00 ft

**Serial #: 8845 Outside**

Press@RunDepth: 369.03 psig @ 4271.00 ft (KB)

Capacity: 8000.00 psig

Start Date: 2016.12.03

End Date: 2016.12.03

Last Calib.: 2016.12.03

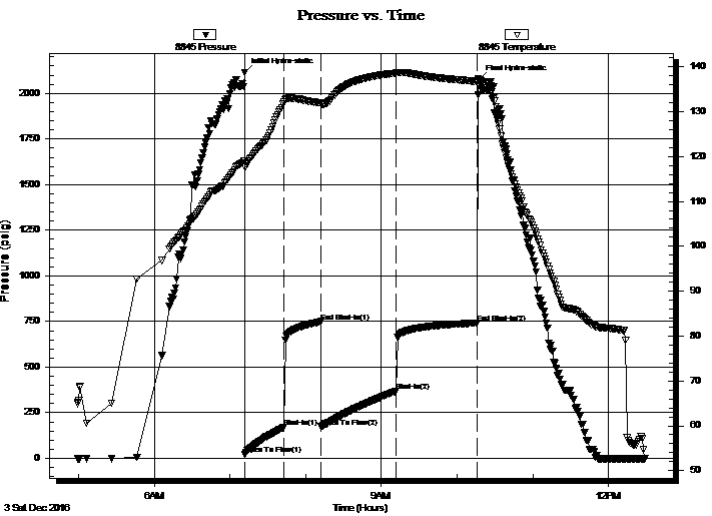
Start Time: 04:59:05

End Time: 12:29:29

Time On Btm: 2016.12.03 @ 07:11:45

Time Off Btm: 2016.12.03 @ 10:17:45

**TEST COMMENT:** IF: BOB @ 10 min.  
IS: No return.  
FF: BOB @ 13 min.  
FS: No return.



## PRESSURE SUMMARY

Time (Min.)	Pressure (psig)	Temp (deg F)	Annotation
0	2115.03	118.97	Initial Hydro-static
1	20.92	117.58	Open To Flow (1)
31	171.75	132.19	Shut-In(1)
60	749.39	131.92	End Shut-In(1)
61	172.28	131.66	Open To Flow (2)
120	369.03	138.54	Shut-In(2)
185	741.42	136.69	End Shut-In(2)
186	2076.67	136.75	Final Hydro-static

## Recovery

Length (ft)	Description	Volume (bbl)
790.00	mcw 15m 85w (Oil spots on top)	10.80

## Gas Rates

	Choke (inches)	Pressure (psig)	Gas Rate (Mcf/d)





**TRILOBITE  
TESTING, INC**

# DRILL STEM TEST REPORT

## FLUID SUMMARY

Brehm Asset Management, LLC

**23 19s 31w Scott Ks**

11625 Custer Rd. Ste 110-363  
Frisco, Tx 75053

**Braeden #2**

Job Ticket: 63472

**DST#: 1**

ATTN: Dwight Brehm

Test Start: 2016.12.03 @ 04:59:00

### Mud and Cushion Information

Mud Type: Gel Chem

Cushion Type:

Oil API:

0 deg API

Mud Weight: 9.00 lb/gal

Cushion Length:

ft

Water Salinity:

57000 ppm

Viscosity: 51.00 sec/qt

Cushion Volume:

bbbl

Water Loss: 7.60 in<sup>3</sup>

Gas Cushion Type:

Resistivity: ohm.m

Gas Cushion Pressure:

psig

Salinity: 2000.00 ppm

Filter Cake: 1.00 inches

### Recovery Information

Recovery Table

Length ft	Description	Volume bbl
790.00	mcw 15m 85w (Oil spots on top)	10.799

Total Length: 790.00 ft      Total Volume: 10.799 bbl

Num Fluid Samples: 0

Num Gas Bombs: 0

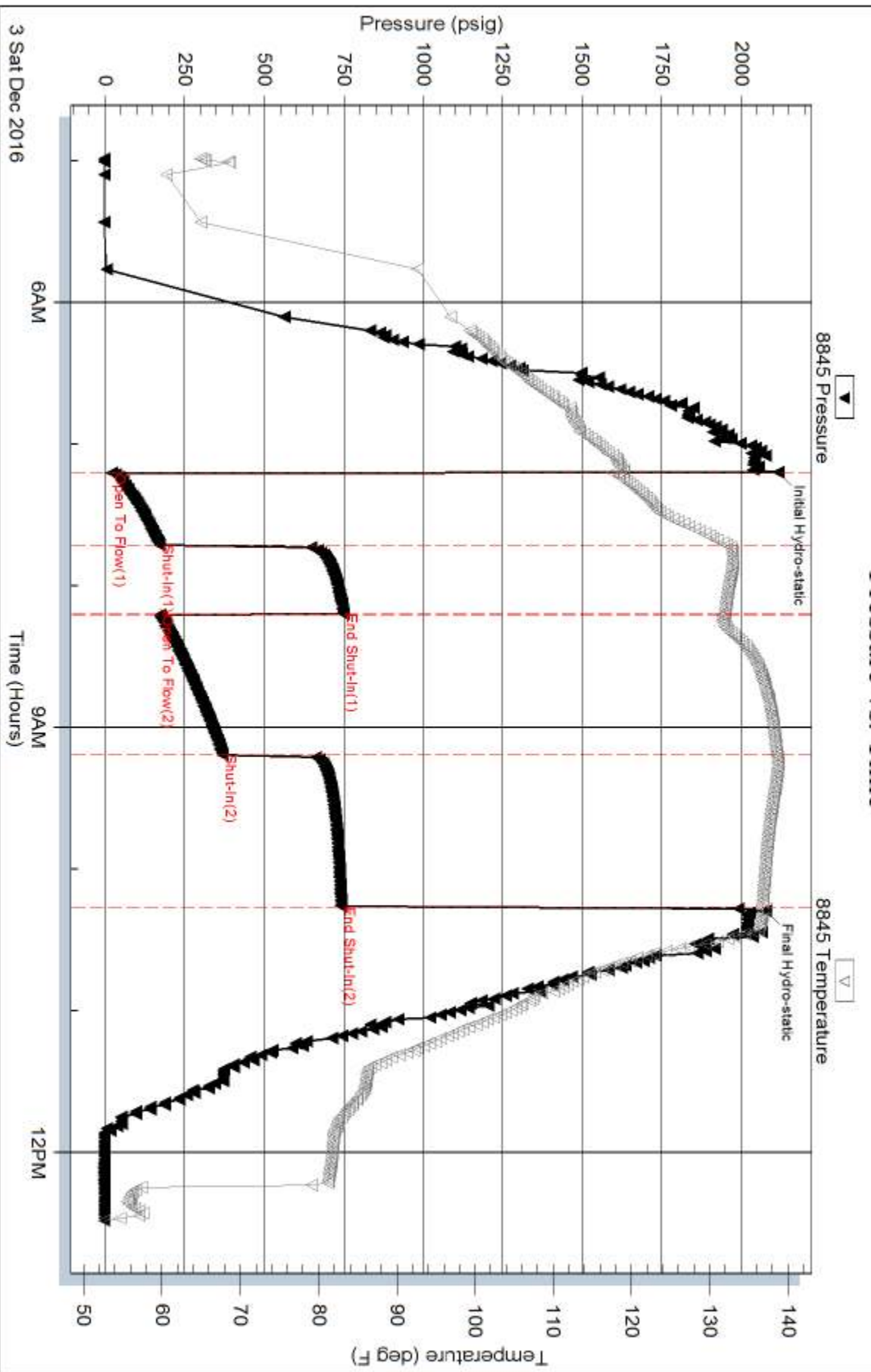
Serial #:

Laboratory Name:

Laboratory Location:

Recovery Comments: rw is .191 @ 50f = 57000ppm

### Pressure vs. Time



Serial #: 8365

Inside

Brehm Asset Management, LLC

Braeden #2

DST Test Number: 1

