



DRILL STEM TEST REPORT

Prepared For: **CMX Inc**

1700 N Waterfront Pkwy
Bldg 300B
Wichita, KS 67206

ATTN: Ken LeBlanc

Leghorn #1-22

22-20S-11W Barton,KS

Start Date: 2017.03.05 @ 22:08:03

End Date: 2017.03.06 @ 05:56:48

Job Ticket #: 63571 DST #: 1

Trilobite Testing, Inc
PO Box 362 Hays, KS 67601
ph: 785-625-4778 fax: 785-625-5620

Printed: 2017.03.08 @ 15:05:48



**TRILOBITE
TESTING, INC.**

DRILL STEM TEST REPORT

CMX Inc
1700 N Waterfront Pkw y
Bldg 300B
Wichita, KS 67206
ATTN: Ken LeBlanc

22-20S-11W Barton,KS

Leghorn #1-22

Job Ticket: 63571

DST#: 1

Test Start: 2017.03.05 @ 22:08:03

GENERAL INFORMATION:

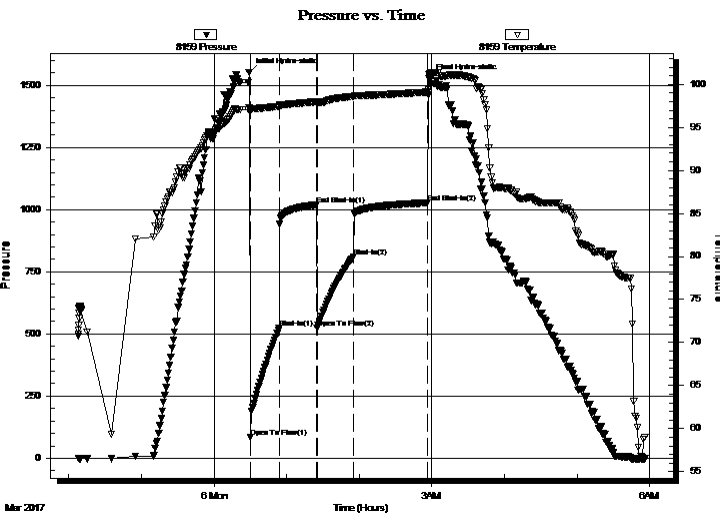
Formation: **LKC "G"**
 Deviated: No Whipstock: ft (KB)
 Time Tool Opened: 00:30:03
 Time Test Ended: 05:56:48
 Interval: **3130.00 ft (KB) To 3140.00 ft (KB) (TVD)**
 Total Depth: 3140.00 ft (KB) (TVD)
 Hole Diameter: 7.88 inches Hole Condition: Good
 Test Type: Conventional Bottom Hole (Initial)
 Tester: Leal Cason
 Unit No: 74
 Reference Elevations: 1768.00 ft (KB)
 1759.00 ft (CF)
 KB to GR/CF: 9.00 ft

Serial #: 8159

Inside

Press@RunDepth: 808.83 psig @ 3131.00 ft (KB) Capacity: 8000.00 psig
 Start Date: 2017.03.05 End Date: 2017.03.06 Last Calib.: 2017.03.06
 Start Time: 22:08:04 End Time: 05:56:48 Time On Btm: 2017.03.06 @ 00:29:03
 Time Off Btm: 2017.03.06 @ 02:57:48

TEST COMMENT: IF: Strong Blow , BOB in 30 seconds
 IS: 4" Blow Back
 FF: Strong Blow , BOB in 1 minute, GTS in 22 minutes, Caught Sample, TSTM
 FS: 5" Blow Back



PRESSURE SUMMARY

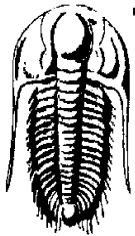
Time (Min.)	Pressure (psig)	Temp (deg F)	Annotation
0	1552.41	97.24	Initial Hydro-static
1	83.97	97.17	Open To Flow (1)
25	523.39	97.45	Shut-In(1)
56	1019.47	97.98	End Shut-In(1)
56	524.89	97.71	Open To Flow (2)
86	808.83	98.61	Shut-In(2)
148	1027.85	99.10	End Shut-In(2)
149	1528.43	101.16	Final Hydro-static

Recovery

Length (ft)	Description	Volume (bbl)
0.00	GTS	0.00
1449.00	Water	20.33
252.00	OMCW 10%O 10%M 80%W	3.53
63.00	OMCW 14%O 32%M 54%W	0.88
3.00	Oil	0.04

Gas Rates

Choke (inches)	Pressure (psig)	Gas Rate (Mcf/d)
----------------	-----------------	------------------



TRILOBITE TESTING, INC.

DRILL STEM TEST REPORT

CMX Inc
1700 N Waterfront Pkw y
Bldg 300B
Wichita, KS 67206
ATTN: Ken LeBlanc

22-20S-11W Barton, KS
Leghorn #1-22
Job Ticket: 63571 **DST#: 1**
Test Start: 2017.03.05 @ 22:08:03

GENERAL INFORMATION:

Formation: **LKC "G"**

Deviated: **No** Whipstock: **ft (KB)**

Time Tool Opened: **00:30:03**

Time Test Ended: **05:56:48**

Test Type: **Conventional Bottom Hole (Initial)**

Tester: **Leal Cason**

Unit No: **74**

Interval: **3130.00 ft (KB) To 3140.00 ft (KB) (TVD)**

Reference Elevations: **1768.00 ft (KB)**

Total Depth: **3140.00 ft (KB) (TVD)**

1759.00 ft (CF)

Hole Diameter: **7.88 inches** Hole Condition: **Good**

KB to GR/CF: **9.00 ft**

Serial #: 6806 **Outside**

Press@RunDepth: **psig @ 3131.00 ft (KB)**

Capacity: **8000.00 psig**

Start Date: **2017.03.05**

End Date:

2017.03.06

Last Calib.:

2017.03.06

Start Time: **22:08:04**

End Time:

05:56:48

Time On Btm:

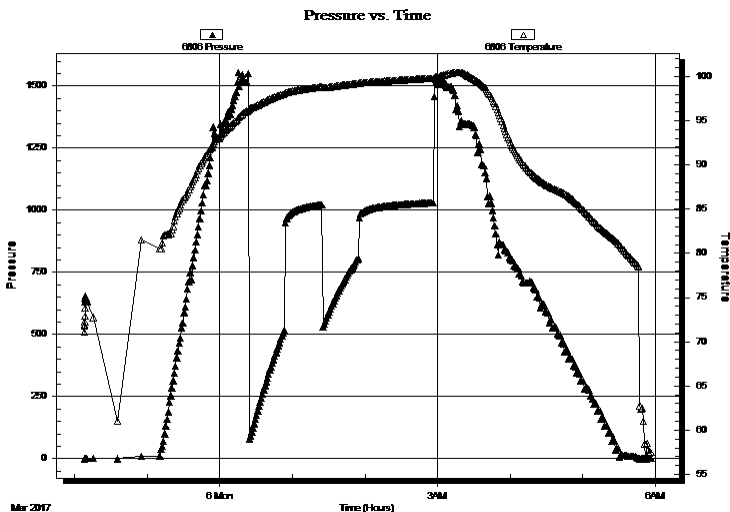
Time Off Btm:

TEST COMMENT: **IF: Strong Blow , BOB in 30 seconds**

IS: 4" Blow Back

FF: Strong Blow , BOB in 1 minute, GTS in 22 minutes, Caught Sample, TSTM

FS: 5" Blow Back



PRESSURE SUMMARY

Time (Min.)	Pressure (psig)	Temp (deg F)	Annotation

Recovery

Length (ft)	Description	Volume (bbl)
0.00	GTS	0.00
1449.00	Water	20.33
252.00	OMCW 10%O 10%M 80%W	3.53
63.00	OMCW 14%O 32%M 54%W	0.88
3.00	Oil	0.04

Gas Rates

Choke (inches)	Pressure (psig)	Gas Rate (Mcf/d)



**TRILOBITE
TESTING, INC.**

DRILL STEM TEST REPORT

TOOL DIAGRAM

CMX Inc
1700 N Waterfront Pkwy
Bldg 300B
Wichita, KS 67206
ATTN: Ken LeBlanc

22-20S-11W Barton, KS
Leghorn #1-22
Job Ticket: 63571 **DST#: 1**
Test Start: 2017.03.05 @ 22:08:03

Tool Information

Drill Pipe:	Length: 3127.00 ft	Diameter: 3.80 inches	Volume: 43.86 bbl	Tool Weight: 2100.00 lb
Heavy Wt. Pipe:	Length: 0.00 ft	Diameter: 0.00 inches	Volume: 0.00 bbl	Weight set on Packer: 25000.00 lb
Drill Collar:	Length: 0.00 ft	Diameter: 2.25 inches	Volume: 0.00 bbl	Weight to Pull Loose: 65000.00 lb
		Total Volume: 43.86 bbl		Tool Chased ft
Drill Pipe Above KB:	18.00 ft			String Weight: Initial 50000.00 lb
Depth to Top Packer:	3130.00 ft			Final 60000.00 lb
Depth to Bottom Packer:	ft			
Interval between Packers:	10.00 ft			
Tool Length:	31.00 ft			
Number of Packers:	2	Diameter: 6.75 inches		

Tool Comments:

Tool Description	Length (ft)	Serial No.	Position	Depth (ft)	Accum. Lengths
Shut In Tool	5.00			3114.00	
Hydraulic tool	5.00			3119.00	
Safety Joint	2.00			3121.00	
Packer	5.00			3126.00	21.00 Bottom Of Top Packer
Packer	4.00			3130.00	
Stubb	1.00			3131.00	
Recorder	0.00	8159	Inside	3131.00	
Recorder	0.00	6806	Outside	3131.00	
Perforations	6.00			3137.00	
Bullnose	3.00			3140.00	10.00 Bottom Packers & Anchor
Total Tool Length:	31.00				



**TRILOBITE
TESTING, INC.**

DRILL STEM TEST REPORT

FLUID SUMMARY

CMX Inc
1700 N Waterfront Pkw y
Bldg 300B
Wichita, KS 67206
ATTN: Ken LeBlanc

22-20S-11W Barton,KS
Leghorn #1-22
Job Ticket: 63571 **DST#: 1**
Test Start: 2017.03.05 @ 22:08:03

Mud and Cushion Information

Mud Type: Gel Chem	Cushion Type:	Oil API:	deg API
Mud Weight: 9.00 lb/gal	Cushion Length: ft	Water Salinity:	70000 ppm
Viscosity: 53.00 sec/qt	Cushion Volume: bbl		
Water Loss: 7.18 in ³	Gas Cushion Type:		
Resistivity: ohm.m	Gas Cushion Pressure: psig		
Salinity: 5300.00 ppm			
Filter Cake: 0.02 inches			

Recovery Information

Recovery Table

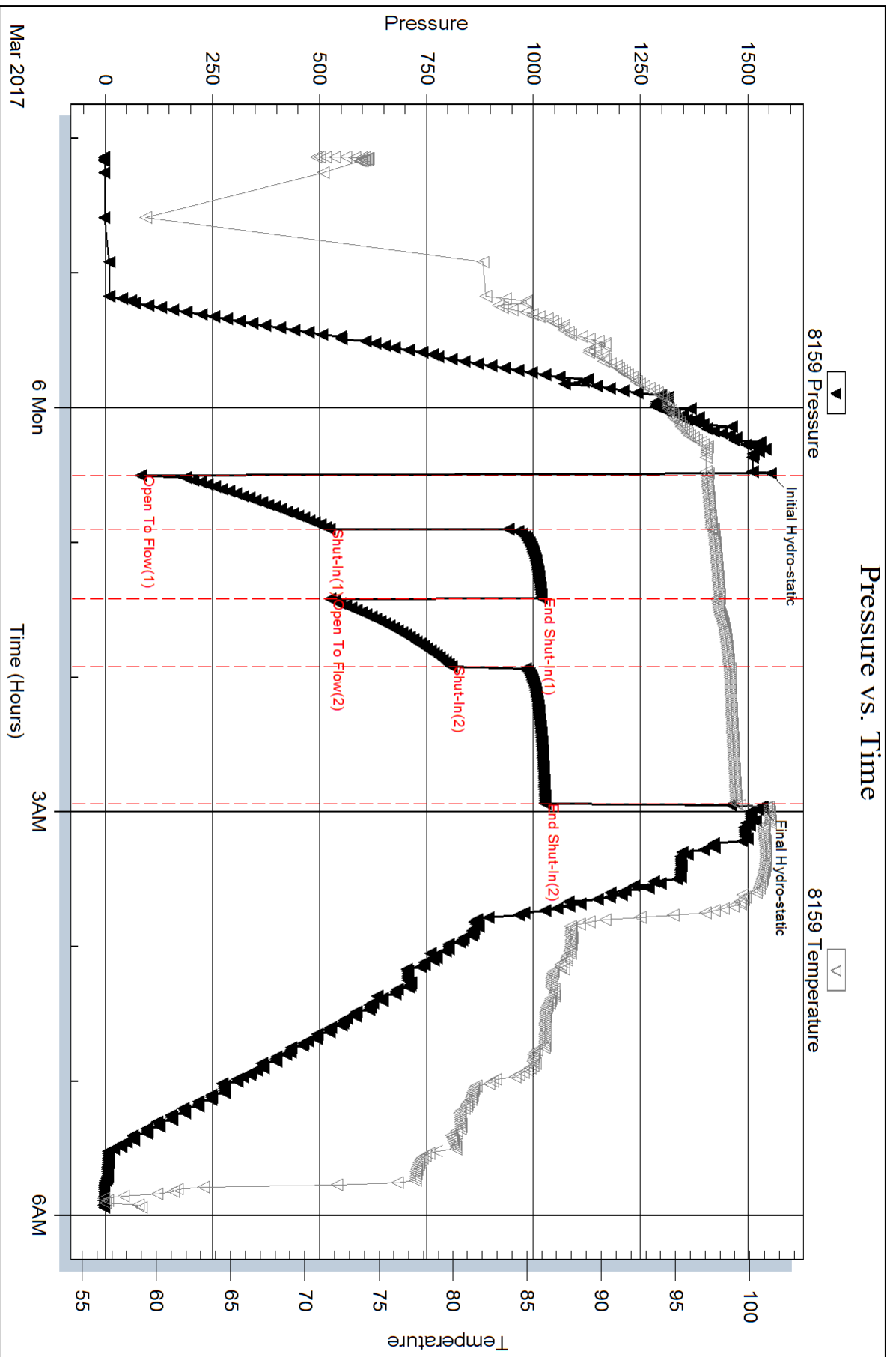
Length ft	Description	Volume bbl
0.00	GTS	0.000
1449.00	Water	20.326
252.00	OMCW 10%O 10%M 80%W	3.535
63.00	OMCW 14%O 32%M 54%W	0.884
3.00	Oil	0.042

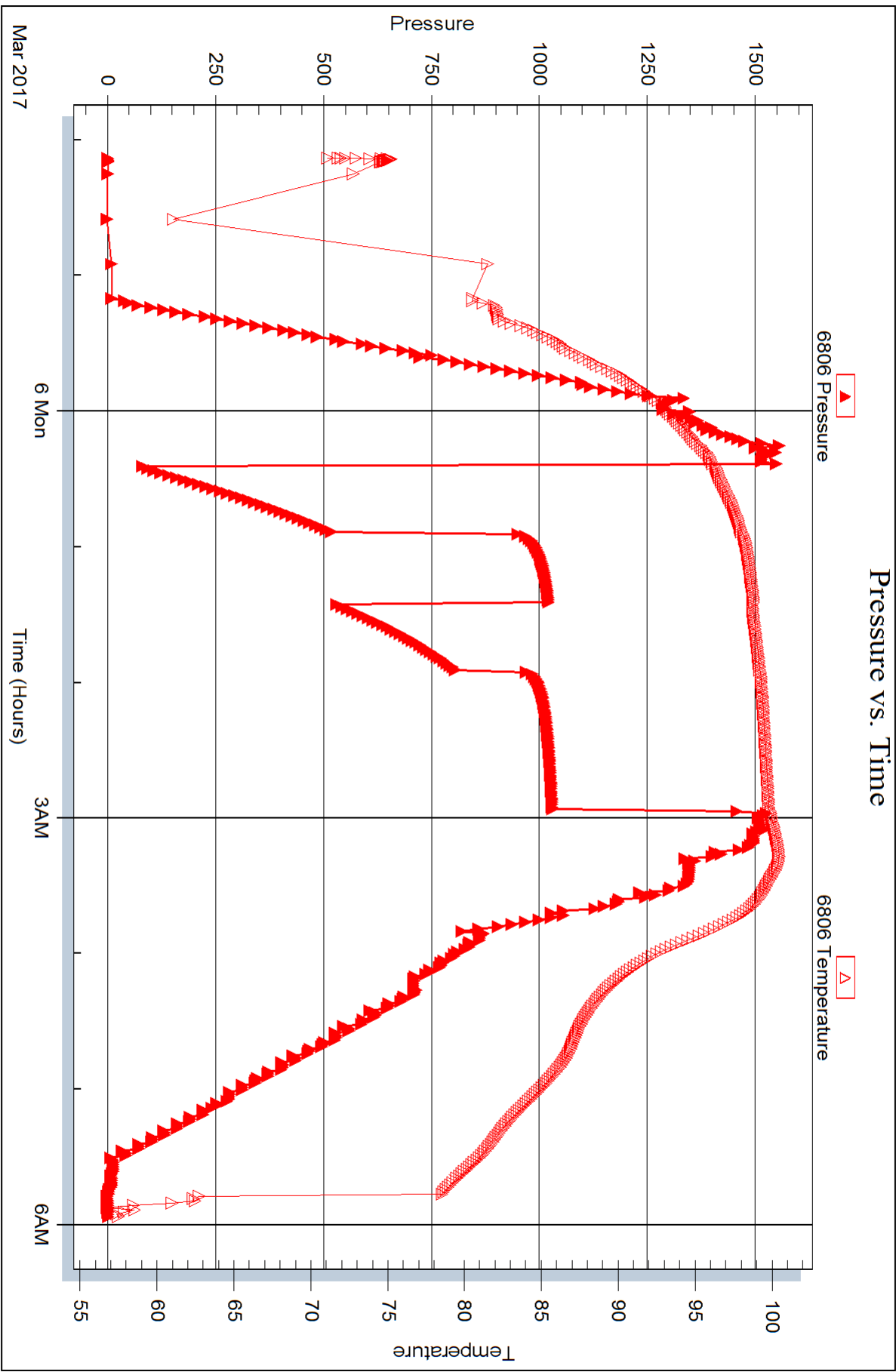
Total Length: 1767.00 ft Total Volume: 24.787 bbl

Num Fluid Samples: 0 Num Gas Bombs: 0 Serial #:

Laboratory Name: Laboratory Location:

Recovery Comments: RW w as .14 @ 55 degrees







DRILL STEM TEST REPORT

Prepared For: **CMX Inc**

1700 N Waterfront Pkwy
Bldg 300B
Wichita, KS 67206

ATTN: Ken LeBlanc

Leghorn #1-22

22-20S-11W Barton,KS

Start Date: 2017.03.06 @ 14:58:15

End Date: 2017.03.06 @ 20:38:45

Job Ticket #: 63572 DST #: 2

Trilobite Testing, Inc
PO Box 362 Hays, KS 67601
ph: 785-625-4778 fax: 785-625-5620

Printed: 2017.03.08 @ 15:05:06



**TRILOBITE
TESTING, INC.**

DRILL STEM TEST REPORT

CMX Inc
1700 N Waterfront Pkw y
Bldg 300B
Wichita, KS 67206
ATTN: Ken LeBlanc

22-20S-11W Barton, KS

Leghorn #1-22

Job Ticket: 63572

DST#: 2

Test Start: 2017.03.06 @ 14:58:15

GENERAL INFORMATION:

Formation: **LKC "H"**
 Deviated: No Whipstock: ft (KB)
 Time Tool Opened: 16:25:15
 Time Test Ended: 20:38:45
 Interval: **3172.00 ft (KB) To 3200.00 ft (KB) (TVD)**
 Total Depth: 3200.00 ft (KB) (TVD)
 Hole Diameter: 7.88 inches Hole Condition: Good
 Test Type: Conventional Bottom Hole (Reset)
 Tester: Leal Cason
 Unit No: 74
 Reference Elevations: 1768.00 ft (KB)
 1759.00 ft (CF)
 KB to GR/CF: 9.00 ft

Serial #: 8159

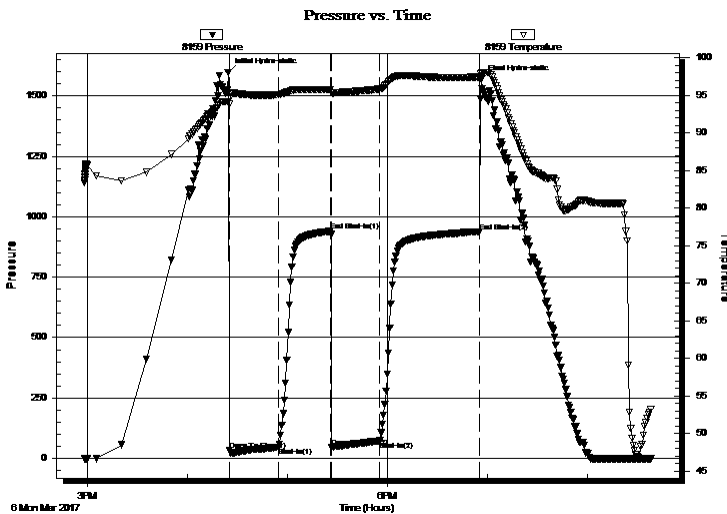
Inside

Press@RunDepth: 72.16 psig @ 3173.00 ft (KB) Capacity: 8000.00 psig
 Start Date: 2017.03.06 End Date: 2017.03.06 Last Calib.: 1899.12.30
 Start Time: 14:58:16 End Time: 20:38:45 Time On Btm: 2017.03.06 @ 16:24:30
 Time Off Btm: 2017.03.06 @ 18:56:30

TEST COMMENT: IF: Strong Blow , BOB in 1 minute
 IS: No Blow Back
 FF: Strong Blow , BOB in 30 seconds, GTS in 13 minutes, TSTM, Caught Sample
 FS: 2" Blow Back

PRESSURE SUMMARY

Time (Min.)	Pressure (psig)	Temp (deg F)	Annotation
0	1597.52	94.16	Initial Hydro-static
1	34.23	93.82	Open To Flow (1)
31	46.85	95.07	Shut-In(1)
62	940.30	95.78	End Shut-In(1)
63	44.64	95.36	Open To Flow (2)
91	72.16	95.85	Shut-In(2)
151	938.22	97.44	End Shut-In(2)
152	1567.04	97.97	Final Hydro-static



Recovery

Length (ft)	Description	Volume (bbl)
0.00	GTS	0.00
120.00	GWMCO 25%G 5%W 10%M 60%O	1.68
30.00	Oil	0.42

Gas Rates

	Choke (inches)	Pressure (psig)	Gas Rate (Mcf/d)

* Recovery from multiple tests



TRILOBITE TESTING, INC.

DRILL STEM TEST REPORT

CMX Inc
1700 N Waterfront Pkw y
Bldg 300B
Wichita, KS 67206
ATTN: Ken LeBlanc

22-20S-11W Barton,KS

Leghorn #1-22

Job Ticket: 63572

DST#: 2

Test Start: 2017.03.06 @ 14:58:15

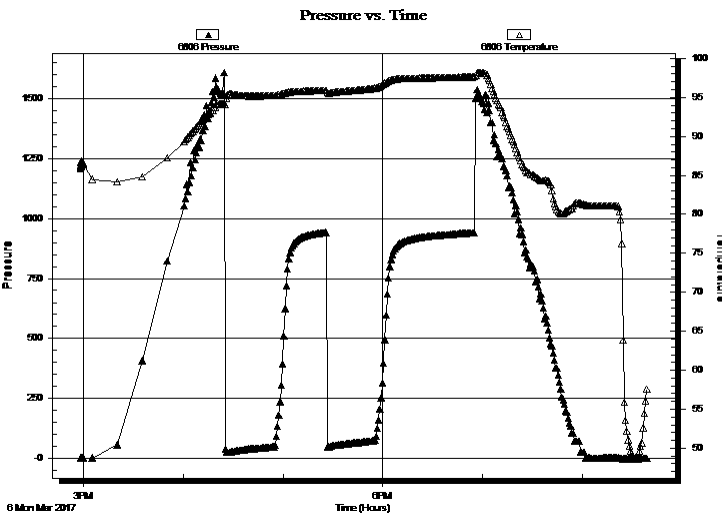
GENERAL INFORMATION:

Formation: **LKC "H"**
 Deviated: No Whipstock: ft (KB)
 Time Tool Opened: 16:25:15
 Time Test Ended: 20:38:45
 Interval: **3172.00 ft (KB) To 3200.00 ft (KB) (TVD)**
 Total Depth: 3200.00 ft (KB) (TVD)
 Hole Diameter: 7.88 inches Hole Condition: Good
 Test Type: Conventional Bottom Hole (Reset)
 Tester: Leal Cason
 Unit No: 74
 Reference Elevations: 1768.00 ft (KB)
 1759.00 ft (CF)
 KB to GR/CF: 9.00 ft

Serial #: 6806 Outside

Press@RunDepth:	psig @ 3173.00 ft (KB)	Capacity:	8000.00 psig
Start Date:	2017.03.06	End Date:	2017.03.06
Start Time:	14:58:16	End Time:	20:38:45
		Time On Btm:	
		Time Off Btm:	
		Last Calib.:	2017.03.06

TEST COMMENT: IF: Strong Blow, BOB in 1 minute
 IS: No Blow Back
 FF: Strong Blow, BOB in 30 seconds, GTS in 13 minutes, TSTM, Caught Sample
 FS: 2" Blow Back



PRESSURE SUMMARY

Time (Min.)	Pressure (psig)	Temp (deg F)	Annotation

Recovery

Length (ft)	Description	Volume (bbl)
0.00	GTS	0.00
120.00	GWMCO 25%G 5%W 10%M 60%O	1.68
30.00	Oil	0.42

Gas Rates

Choke (inches)	Pressure (psig)	Gas Rate (Mcf/d)

* Recovery from multiple tests



**TRILOBITE
TESTING, INC.**

DRILL STEM TEST REPORT

TOOL DIAGRAM

CMX Inc
1700 N Waterfront Pkwy
Bldg 300B
Wichita, KS 67206
ATTN: Ken LeBlanc

22-20S-11W Barton, KS

Leghorn #1-22

Job Ticket: 63572

DST#: 2

Test Start: 2017.03.06 @ 14:58:15

Tool Information

Drill Pipe:	Length: 3158.00 ft	Diameter: 3.80 inches	Volume: 44.30 bbl	Tool Weight: 2100.00 lb
Heavy Wt. Pipe:	Length: 0.00 ft	Diameter: 0.00 inches	Volume: 0.00 bbl	Weight set on Packer: 25000.00 lb
Drill Collar:	Length: 0.00 ft	Diameter: 2.25 inches	Volume: 0.00 bbl	Weight to Pull Loose: 60000.00 lb
			<u>Total Volume: 44.30 bbl</u>	Tool Chased ft
Drill Pipe Above KB:	7.00 ft			String Weight: Initial 52000.00 lb
Depth to Top Packer:	3172.00 ft			Final 54000.00 lb
Depth to Bottom Packer:	ft			
Interval between Packers:	28.00 ft			
Tool Length:	49.00 ft			
Number of Packers:	2	Diameter: 6.75 inches		
Tool Comments:				

Tool Description

Tool Description	Length (ft)	Serial No.	Position	Depth (ft)	Accum. Lengths
Shut In Tool	5.00			3156.00	
Hydraulic tool	5.00			3161.00	
Safety Joint	2.00			3163.00	
Packer	5.00			3168.00	21.00 Bottom Of Top Packer
Packer	4.00			3172.00	
Stubb	1.00			3173.00	
Recorder	0.00	8159	Inside	3173.00	
Recorder	0.00	6806	Outside	3173.00	
Perforations	24.00			3197.00	
Bullnose	3.00			3200.00	28.00 Bottom Packers & Anchor
Total Tool Length:	49.00				



**TRILOBITE
TESTING, INC.**

DRILL STEM TEST REPORT

FLUID SUMMARY

CMX Inc
1700 N Waterfront Pkwy
Bldg 300B
Wichita, KS 67206
ATTN: Ken LeBlanc

22-20S-11W Barton,KS
Leghorn #1-22
Job Ticket: 63572 **DST#: 2**
Test Start: 2017.03.06 @ 14:58:15

Mud and Cushion Information

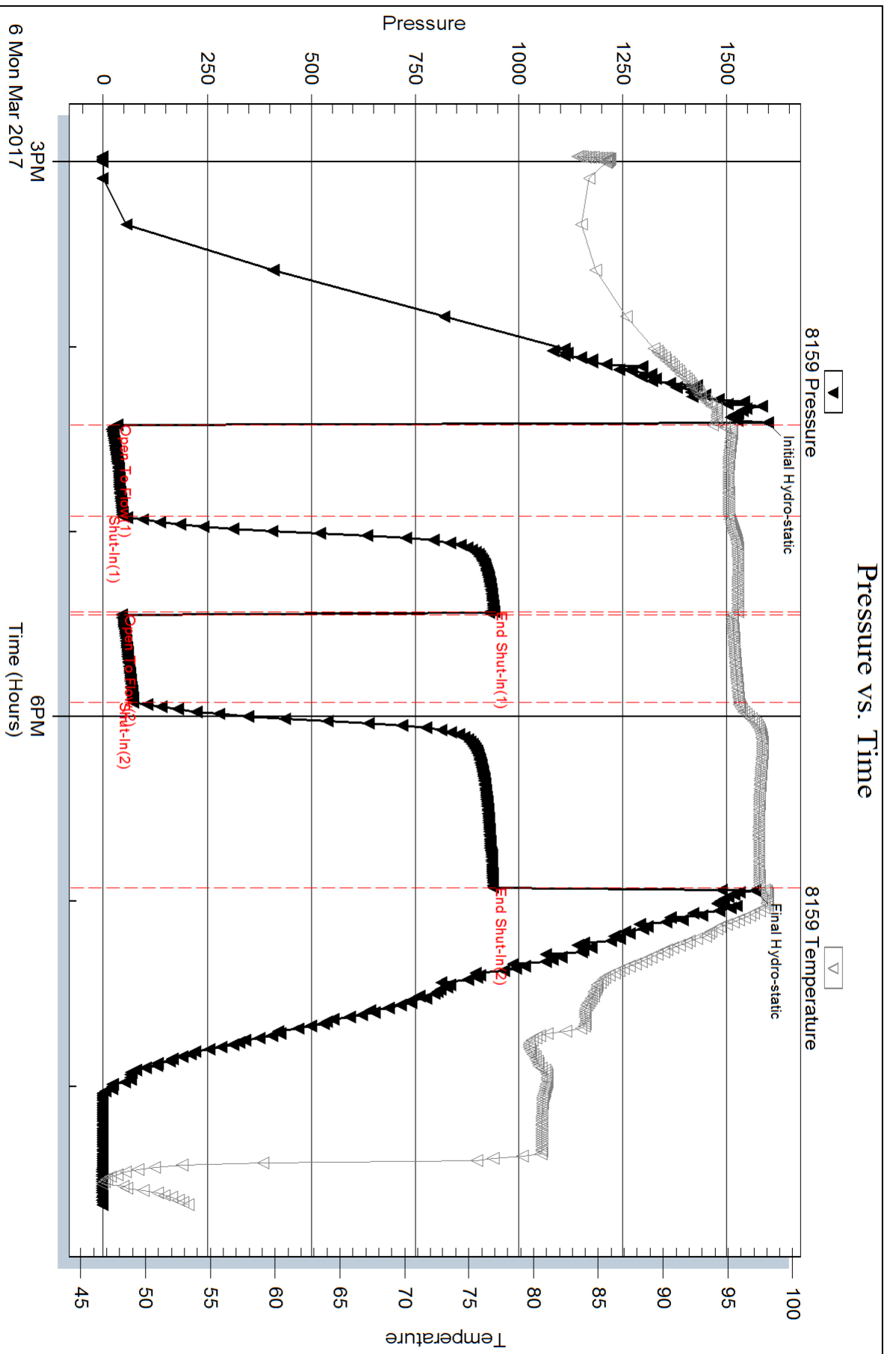
Mud Type: Gel Chem	Cushion Type:	Oil API: 39.7 deg API
Mud Weight: 9.00 lb/gal	Cushion Length: ft	Water Salinity: ppm
Viscosity: 53.00 sec/qt	Cushion Volume: bbl	
Water Loss: 7.17 in ³	Gas Cushion Type:	
Resistivity: ohm.m	Gas Cushion Pressure: psig	
Salinity: 5300.00 ppm		
Filter Cake: 0.02 inches		

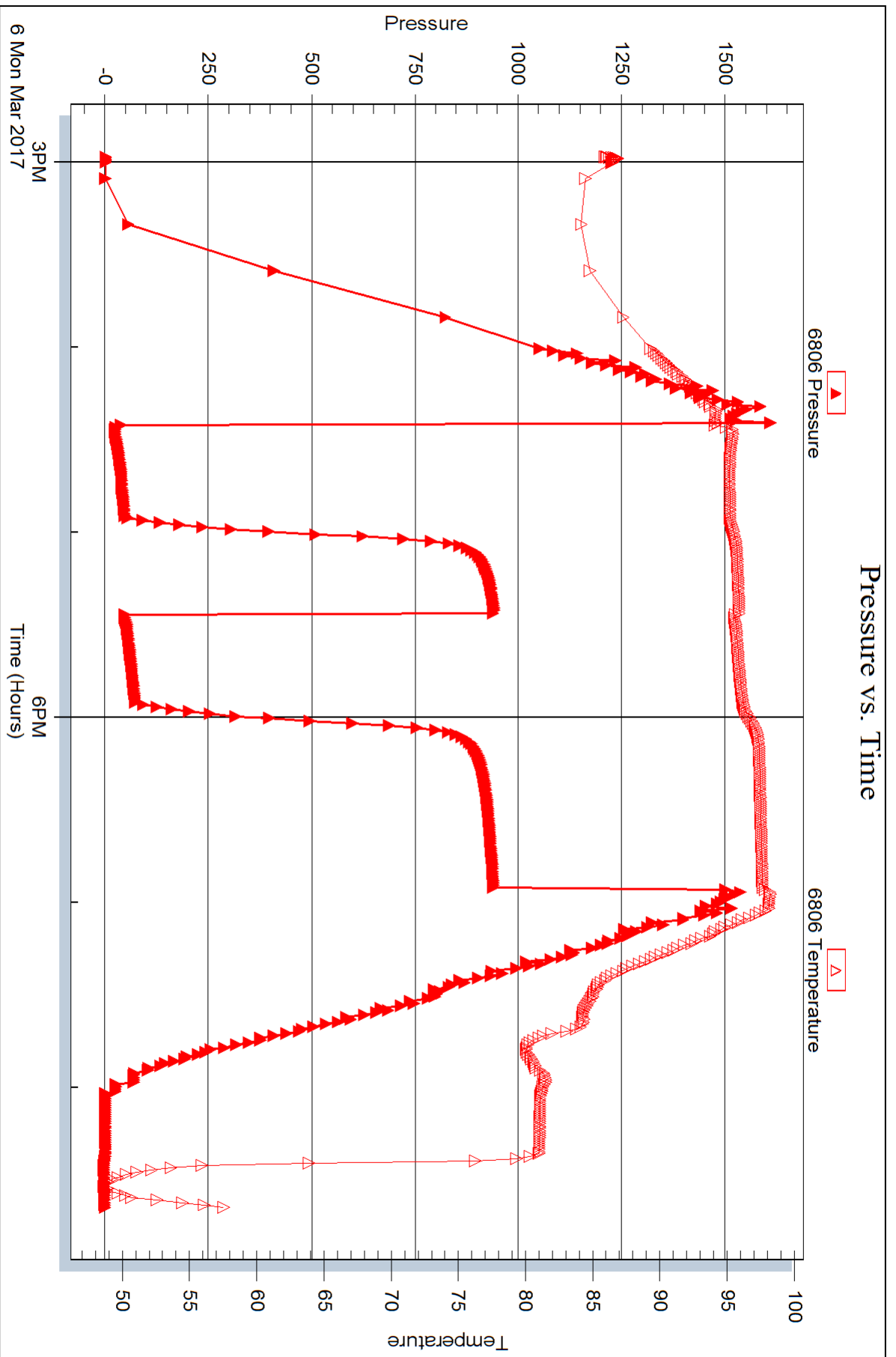
Recovery Information

Recovery Table

Length ft	Description	Volume bbl
0.00	GTS	0.000
120.00	GWMCO 25%G 5%W 10%M 60%O	1.683
30.00	Oil	0.421

Total Length: 150.00 ft Total Volume: 2.104 bbl
 Num Fluid Samples: 0 Num Gas Bombs: 0 Serial #:
 Laboratory Name: Laboratory Location:
 Recovery Comments: Gravity was 39.2 @ 55 degrees







DRILL STEM TEST REPORT

Prepared For: **CMX Inc**

1700 N Waterfront Pkwy
Bldg 300B
Wichita, KS 67206

ATTN: Ken LeBlanc

Leghorn #1-22

22-20S-11W Barton,KS

Start Date: 2017.03.07 @ 11:52:11

End Date: 2017.03.07 @ 17:49:47

Job Ticket #: 63573 DST #: 3

Trilobite Testing, Inc
PO Box 362 Hays, KS 67601
ph: 785-625-4778 fax: 785-625-5620

Printed: 2017.03.08 @ 15:04:26



TRILOBITE TESTING, INC.

DRILL STEM TEST REPORT

CMX Inc
 1700 N Waterfront Pkw y
 Bldg 300B
 Wichita, KS 67206
 ATTN: Ken LeBlanc

22-20S-11W Barton,KS

Leghorn #1-22

Job Ticket: 63573

DST#: 3

Test Start: 2017.03.07 @ 11:52:11

GENERAL INFORMATION:

Formation: **Arbuckle**

Deviated: No Whipstock: ft (KB)

Time Tool Opened: 13:16:56

Time Test Ended: 17:49:47

Test Type: Conventional Bottom Hole (Reset)

Tester: Leal Cason

Unit No: 68

Interval: 3260.00 ft (KB) To 3307.00 ft (KB) (TVD)

Reference Elevations: 1768.00 ft (KB)

Total Depth: 3307.00 ft (KB) (TVD)

1759.00 ft (CF)

Hole Diameter: 7.88 inches Hole Condition: Good

KB to GR/CF: 9.00 ft

Serial #: 8159

Inside

Press@RunDepth: 44.67 psig @ 3261.00 ft (KB)

Capacity: 8000.00 psig

Start Date: 2017.03.07

End Date:

2017.03.07

Last Calib.:

2017.03.07

Start Time:

11:52:12

End Time:

17:49:47

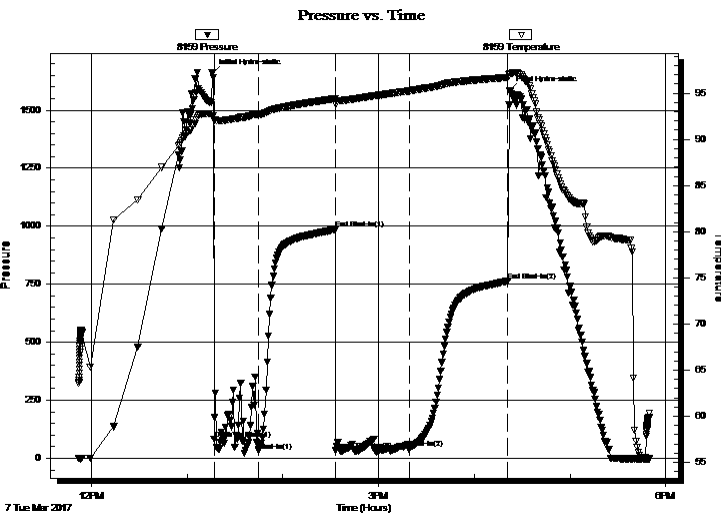
Time On Btm:

2017.03.07 @ 13:15:41

Time Off Btm:

2017.03.07 @ 16:22:11

TEST COMMENT: IF: Weak Blow , Built to 1 3/4"
 IS: No Blow Back
 FF: Weak Blow , Built to 4 1/2" Died Off to 2"
 FS: No Blow Back



PRESSURE SUMMARY

Time (Min.)	Pressure (psig)	Temp (deg F)	Annotation
0	1659.53	92.82	Initial Hydro-static
2	83.55	92.08	Open To Flow (1)
29	32.38	92.67	Shut-In(1)
78	986.78	94.41	End Shut-In(1)
78	35.39	93.81	Open To Flow (2)
124	44.67	95.26	Shut-In(2)
186	764.33	96.71	End Shut-In(2)
187	1582.65	97.05	Final Hydro-static

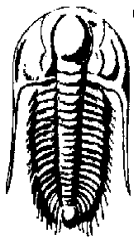
Recovery

Length (ft)	Description	Volume (bbl)
0.00	135 GIP	0.00
25.00	MCO 30%M 7-%O	0.35

* Recovery from multiple tests

Gas Rates

Choke (inches)	Pressure (psig)	Gas Rate (Mcf/d)



TRILOBITE TESTING, INC.

DRILL STEM TEST REPORT

CMX Inc
1700 N Waterfront Pkw y
Bldg 300B
Wichita, KS 67206
ATTN: Ken LeBlanc

22-20S-11W Barton,KS

Leghorn #1-22

Job Ticket: 63573

DST#: 3

Test Start: 2017.03.07 @ 11:52:11

GENERAL INFORMATION:

Formation: **Arbuckle**

Deviated: No Whipstock: ft (KB)

Time Tool Opened: 13:16:56

Time Test Ended: 17:49:47

Test Type: Conventional Bottom Hole (Reset)

Tester: Leal Cason

Unit No: 68

Interval: 3260.00 ft (KB) To 3307.00 ft (KB) (TVD)

Reference Elevations: 1768.00 ft (KB)

Total Depth: 3307.00 ft (KB) (TVD)

1759.00 ft (CF)

Hole Diameter: 7.88 inches Hole Condition: Good

KB to GR/CF: 9.00 ft

Serial #: 6806 Outside

Press@RunDepth: psig @ 3261.00 ft (KB)

Capacity: 8000.00 psig

Start Date: 2017.03.07

End Date: 2017.03.07

Last Calib.: 2017.03.07

Start Time: 11:52:12

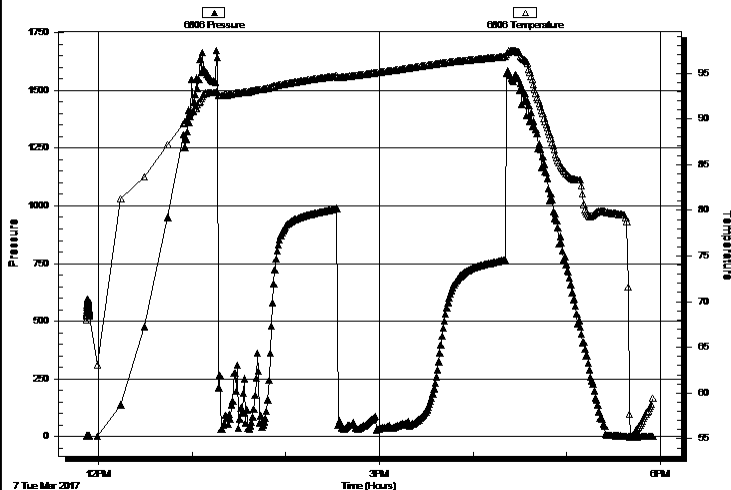
End Time: 17:55:41

Time On Btm:

Time Off Btm:

TEST COMMENT: IF: Weak Blow , Built to 1 3/4"
IS: No Blow Back
FF: Weak Blow , Built to 4 1/2" Died Off to 2"
FS: No Blow Back

Pressure vs. Time



PRESSURE SUMMARY

Time (Min.)	Pressure (psig)	Temp (deg F)	Annotation

Recovery

Length (ft)	Description	Volume (bbl)
0.00	135 GIP	0.00
25.00	MCO 30%M 7-%O	0.35

Gas Rates

Choke (inches)	Pressure (psig)	Gas Rate (Mcf/d)

* Recovery from multiple tests



**TRILOBITE
TESTING, INC.**

DRILL STEM TEST REPORT

TOOL DIAGRAM

CMX Inc
1700 N Waterfront Pkwy
Bldg 300B
Wichita, KS 67206
ATTN: Ken LeBlanc

22-20S-11W Barton, KS
Leghorn #1-22
Job Ticket: 63573 **DST#: 3**
Test Start: 2017.03.07 @ 11:52:11

Tool Information

Drill Pipe:	Length: 3251.00 ft	Diameter: 3.80 inches	Volume: 45.60 bbl	Tool Weight: 2100.00 lb
Heavy Wt. Pipe:	Length: 0.00 ft	Diameter: 0.00 inches	Volume: 0.00 bbl	Weight set on Packer: 25000.00 lb
Drill Collar:	Length: 0.00 ft	Diameter: 2.25 inches	Volume: 0.00 bbl	Weight to Pull Loose: 60000.00 lb
			<u>Total Volume: 45.60 bbl</u>	Tool Chased: ft
Drill Pipe Above KB:	12.00 ft			String Weight: Initial 54000.00 lb
Depth to Top Packer:	3260.00 ft			Final 54000.00 lb
Depth to Bottom Packer:	ft			
Interval between Packers:	47.00 ft			
Tool Length:	68.00 ft			
Number of Packers:	2	Diameter: 6.75 inches		

Tool Comments:

Tool Description	Length (ft)	Serial No.	Position	Depth (ft)	Accum. Lengths
-------------------------	--------------------	-------------------	-----------------	-------------------	-----------------------

Shut In Tool	5.00			3244.00	
Hydraulic tool	5.00			3249.00	
Safety Joint	2.00			3251.00	
Packer	5.00			3256.00	21.00 Bottom Of Top Packer
Packer	4.00			3260.00	
Stubb	1.00			3261.00	
Recorder	0.00	8159	Inside	3261.00	
Recorder	0.00	6806	Outside	3261.00	
Perforations	6.00			3267.00	
Change Over Sub	1.00			3268.00	
Drill Pipe	32.00			3300.00	
Change Over Sub	1.00			3301.00	
Perforations	3.00			3304.00	
Bullnose	3.00			3307.00	47.00 Bottom Packers & Anchor

Total Tool Length: 68.00



**TRILOBITE
TESTING, INC.**

DRILL STEM TEST REPORT

FLUID SUMMARY

CMX Inc
1700 N Waterfront Pkwy
Bldg 300B
Wichita, KS 67206
ATTN: Ken LeBlanc

22-20S-11W Barton,KS
Leghorn #1-22
Job Ticket: 63573 **DST#: 3**
Test Start: 2017.03.07 @ 11:52:11

Mud and Cushion Information

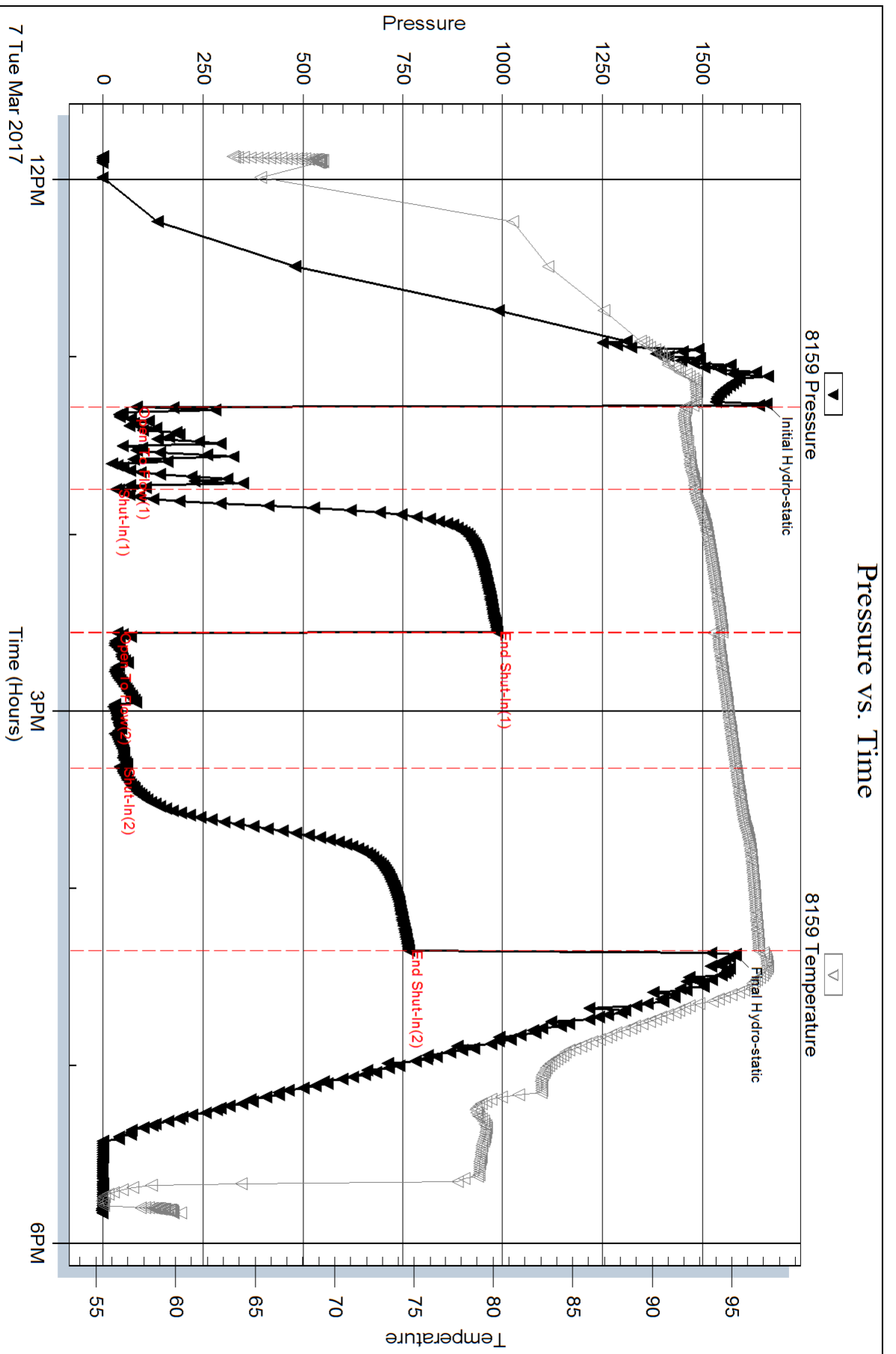
Mud Type: Gel Chem	Cushion Type:	Oil API:	deg API
Mud Weight: 9.00 lb/gal	Cushion Length: ft	Water Salinity:	ppm
Viscosity: 53.00 sec/qt	Cushion Volume: bbl		
Water Loss: 7.18 in ³	Gas Cushion Type:		
Resistivity: ohm.m	Gas Cushion Pressure: psig		
Salinity: 5300.00 ppm			
Filter Cake: 0.02 inches			

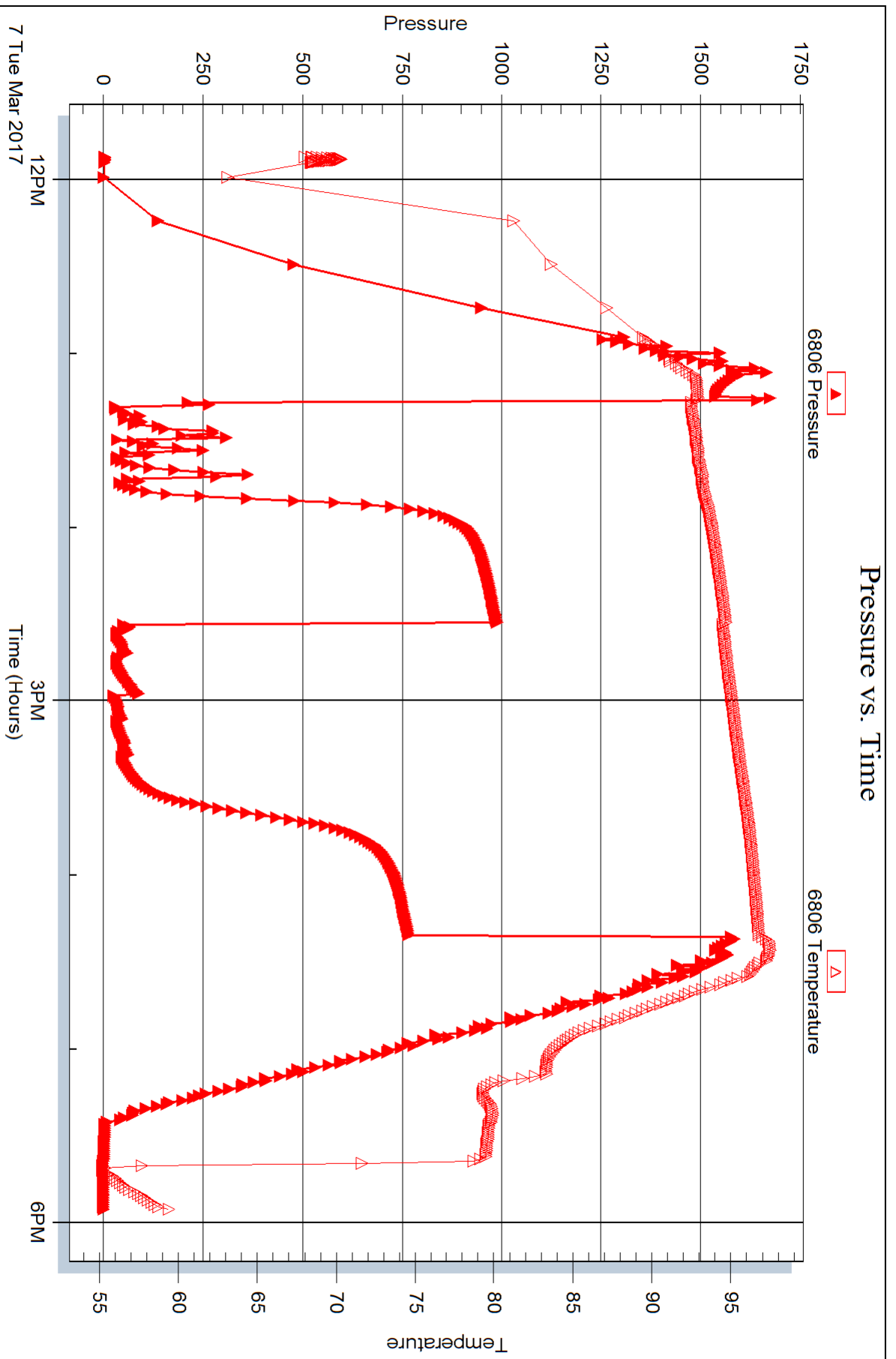
Recovery Information

Recovery Table

Length ft	Description	Volume bbl
0.00	135 GIP	0.000
25.00	MCO 30%M 7-%O	0.351

Total Length: 25.00 ft Total Volume: 0.351 bbl
 Num Fluid Samples: 0 Num Gas Bombs: 0 Serial #:
 Laboratory Name: Laboratory Location:
 Recovery Comments:







DRILL STEM TEST REPORT

Prepared For: **CMX Inc**

1700 N Waterfront Pkwy
Bldg 300B
Wichita, KS 67206

ATTN: Ken LeBlanc

Leghorn #1-22

22-20S-11W Barton,KS

Start Date: 2017.03.08 @ 00:10:17

End Date: 2017.03.08 @ 07:44:47

Job Ticket #: 63574 DST #: 4

Trilobite Testing, Inc
PO Box 362 Hays, KS 67601
ph: 785-625-4778 fax: 785-625-5620

Printed: 2017.03.08 @ 15:03:15



TRILOBITE TESTING, INC.

DRILL STEM TEST REPORT

CMX Inc
 1700 N Waterfront Pkw y
 Bldg 300B
 Wichita, KS 67206
 ATTN: Ken LeBlanc

22-20S-11W Barton,KS

Leghorn #1-22

Job Ticket: 63574

DST#: 4

Test Start: 2017.03.08 @ 00:10:17

GENERAL INFORMATION:

Formation: **Arbuckle**
 Deviated: No Whipstock: ft (KB)
 Time Tool Opened: 01:40:17
 Time Test Ended: 07:44:47
 Interval: **3265.00 ft (KB) To 3312.00 ft (KB) (TVD)**
 Total Depth: 3312.00 ft (KB) (TVD)
 Hole Diameter: 7.88 inches Hole Condition: Good
 Test Type: Conventional Bottom Hole (Reset)
 Tester: Leal Cason
 Unit No: 68
 Reference Elevations: 1768.00 ft (KB)
 1759.00 ft (CF)
 KB to GR/CF: 9.00 ft

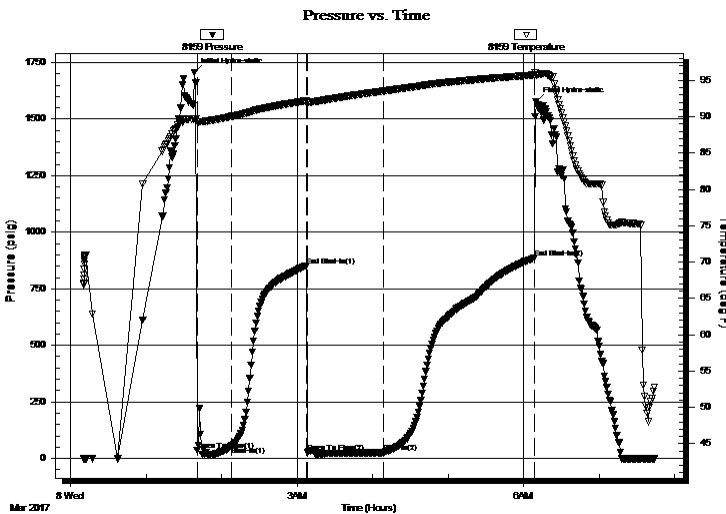
Serial #: 8159

Inside

Press@RunDepth: 26.67 psig @ 3266.00 ft (KB) Capacity: 8000.00 psig
 Start Date: 2017.03.08 End Date: 2017.03.08 Last Calib.: 2017.03.08
 Start Time: 00:10:18 End Time: 07:44:47 Time On Btm: 2017.03.08 @ 01:38:17
 Time Off Btm: 2017.03.08 @ 06:10:02

TEST COMMENT: IF: Weak 1/2" Blow
 IS: No Blow Back
 FF: Weak 2" Blow
 FS: No Blow Back

PRESSURE SUMMARY



Time (Min.)	Pressure (psig)	Temp (deg F)	Annotation
0	1706.24	89.75	Initial Hydro-static
2	37.08	89.33	Open To Flow (1)
30	52.73	90.06	Shut-In(1)
90	851.21	92.21	End Shut-In(1)
90	24.86	91.98	Open To Flow (2)
151	26.67	93.55	Shut-In(2)
271	885.60	95.75	End Shut-In(2)
272	1578.66	95.78	Final Hydro-static

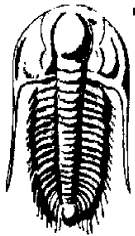
Recovery

Length (ft)	Description	Volume (bbl)
0.00	150 GIP	0.00
30.00	GOCM 12%G 24%O 64%M	0.42

* Recovery from multiple tests

Gas Rates

Choke (inches)	Pressure (psig)	Gas Rate (Mcf/d)



TRILOBITE TESTING, INC.

DRILL STEM TEST REPORT

CMX Inc
 1700 N Waterfront Pkw y
 Bldg 300B
 Wichita, KS 67206
 ATTN: Ken LeBlanc

22-20S-11W Barton,KS

Leghorn #1-22

Job Ticket: 63574 **DST#: 4**
 Test Start: 2017.03.08 @ 00:10:17

GENERAL INFORMATION:

Formation: **Arbuckle**

Deviated: No Whipstock: ft (KB)

Time Tool Opened: 01:40:17

Time Test Ended: 07:44:47

Interval: 3265.00 ft (KB) To 3312.00 ft (KB) (TVD)

Total Depth: 3312.00 ft (KB) (TVD)

Hole Diameter: 7.88 inchesHole Condition: Good

Test Type: Conventional Bottom Hole (Reset)

Tester: Leal Cason

Unit No: 68

Reference Elevations: 1768.00 ft (KB)

1759.00 ft (CF)

KB to GR/CF: 9.00 ft

Serial #: 6806 Outside

Press@RunDepth: psig @ 3266.00 ft (KB)

Start Date: 2017.03.08 End Date: 2017.03.08

Start Time: 00:10:18 End Time: 07:45:02

Capacity: 8000.00 psig

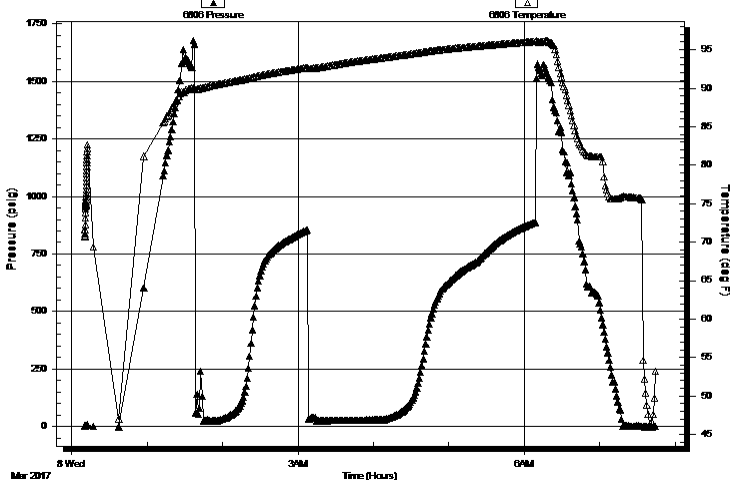
Last Calib.: 2017.03.08

Time On Btm:

Time Off Btm:

TEST COMMENT: IF: Weak 1/2" Blow
 IS: No Blow Back
 FF: Weak 2" Blow
 FS: No Blow Back

Pressure vs. Time



PRESSURE SUMMARY

Time (Min.)	Pressure (psig)	Temp (deg F)	Annotation

Recovery

Length (ft)	Description	Volume (bbl)
0.00	150 GIP	0.00
30.00	GOCM 12%G 24%O 64%M	0.42

* Recovery from multiple tests

Gas Rates

	Choke (inches)	Pressure (psig)	Gas Rate (Mcf/d)



**TRILOBITE
TESTING, INC.**

DRILL STEM TEST REPORT

TOOL DIAGRAM

CMX Inc
1700 N Waterfront Pkwy
Bldg 300B
Wichita, KS 67206
ATTN: Ken LeBlanc

22-20S-11W Barton, KS

Leghorn #1-22

Job Ticket: 63574

DST#: 4

Test Start: 2017.03.08 @ 00:10:17

Tool Information

Drill Pipe:	Length: 3251.00 ft	Diameter: 3.80 inches	Volume: 45.60 bbl	Tool Weight: 2100.00 lb
Heavy Wt. Pipe:	Length: 0.00 ft	Diameter: 0.00 inches	Volume: 0.00 bbl	Weight set on Packer: 25000.00 lb
Drill Collar:	Length: 0.00 ft	Diameter: 2.25 inches	Volume: 0.00 bbl	Weight to Pull Loose: 58000.00 lb
			<u>Total Volume: 45.60 bbl</u>	Tool Chased ft
Drill Pipe Above KB:	7.00 ft			String Weight: Initial 54000.00 lb
Depth to Top Packer:	3265.00 ft			Final 54000.00 lb
Depth to Bottom Packer:	ft			
Interval between Packers:	47.00 ft			
Tool Length:	68.00 ft			
Number of Packers:	2	Diameter: 6.75 inches		

Tool Comments:

Tool Description

Tool Description	Length (ft)	Serial No.	Position	Depth (ft)	Accum. Lengths
Shut In Tool	5.00			3249.00	
Hydraulic tool	5.00			3254.00	
Safety Joint	2.00			3256.00	
Packer	5.00			3261.00	21.00 Bottom Of Top Packer
Packer	4.00			3265.00	
Stubb	1.00			3266.00	
Recorder	0.00	8159	Inside	3266.00	
Recorder	0.00	6806	Outside	3266.00	
Perforations	6.00			3272.00	
Change Over Sub	1.00			3273.00	
Drill Pipe	32.00			3305.00	
Change Over Sub	1.00			3306.00	
Perforations	3.00			3309.00	
Bullnose	3.00			3312.00	47.00 Bottom Packers & Anchor

Total Tool Length: 68.00



**TRILOBITE
TESTING, INC.**

DRILL STEM TEST REPORT

FLUID SUMMARY

CMX Inc
1700 N Waterfront Pkwy
Bldg 300B
Wichita, KS 67206
ATTN: Ken LeBlanc

22-20S-11W Barton,KS
Leghorn #1-22
Job Ticket: 63574 **DST#: 4**
Test Start: 2017.03.08 @ 00:10:17

Mud and Cushion Information

Mud Type: Gel Chem	Cushion Type:	Oil API:	deg API
Mud Weight: 9.00 lb/gal	Cushion Length: ft	Water Salinity:	ppm
Viscosity: 53.00 sec/qt	Cushion Volume: bbl		
Water Loss: 7.59 in ³	Gas Cushion Type:		
Resistivity: ohm.m	Gas Cushion Pressure: psig		
Salinity: 8300.00 ppm			
Filter Cake: 0.02 inches			

Recovery Information

Recovery Table

Length ft	Description	Volume bbl
0.00	150 GIP	0.000
30.00	GOCM 12%G 24%O 64%M	0.421

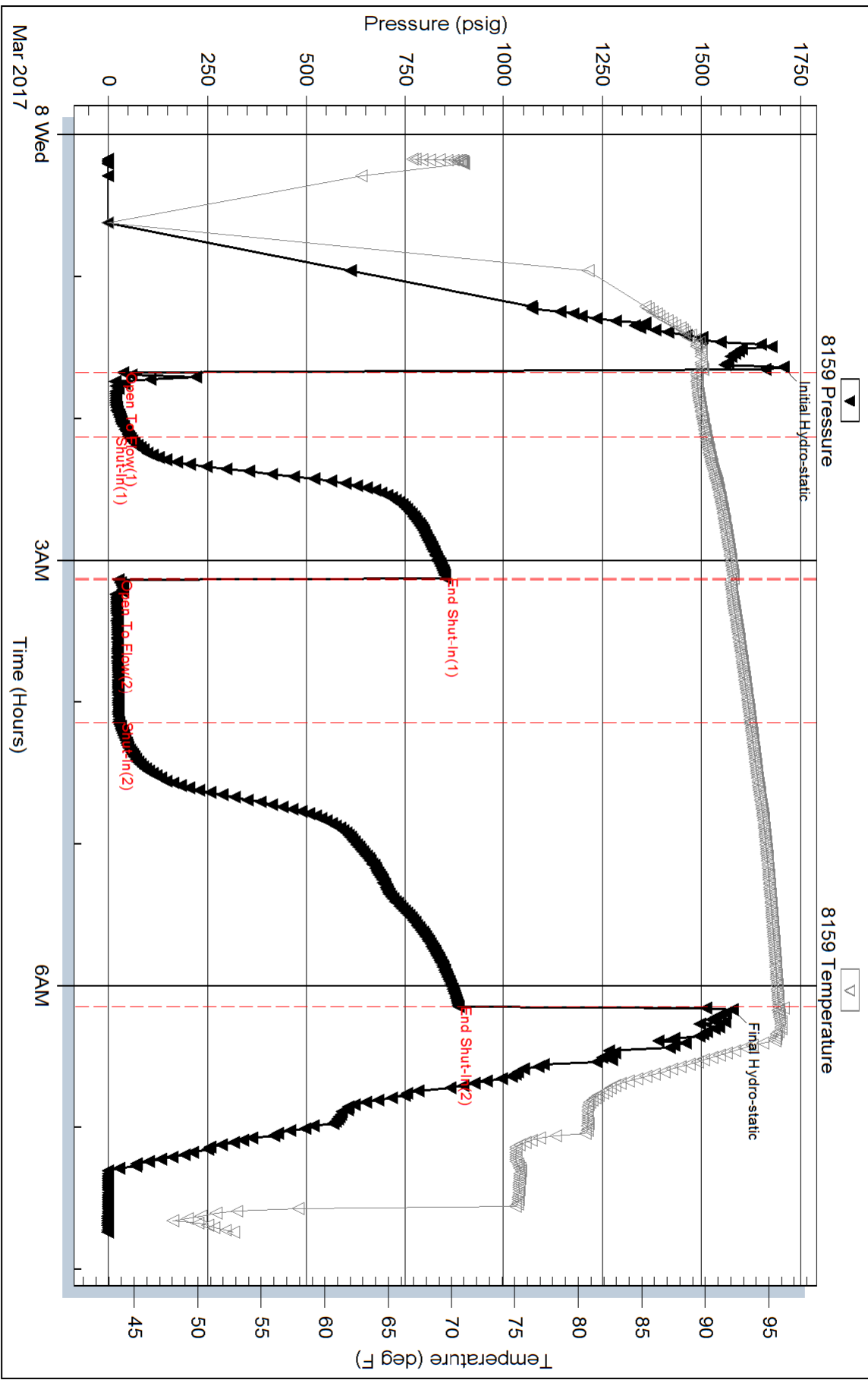
Total Length: 30.00 ft Total Volume: 0.421 bbl

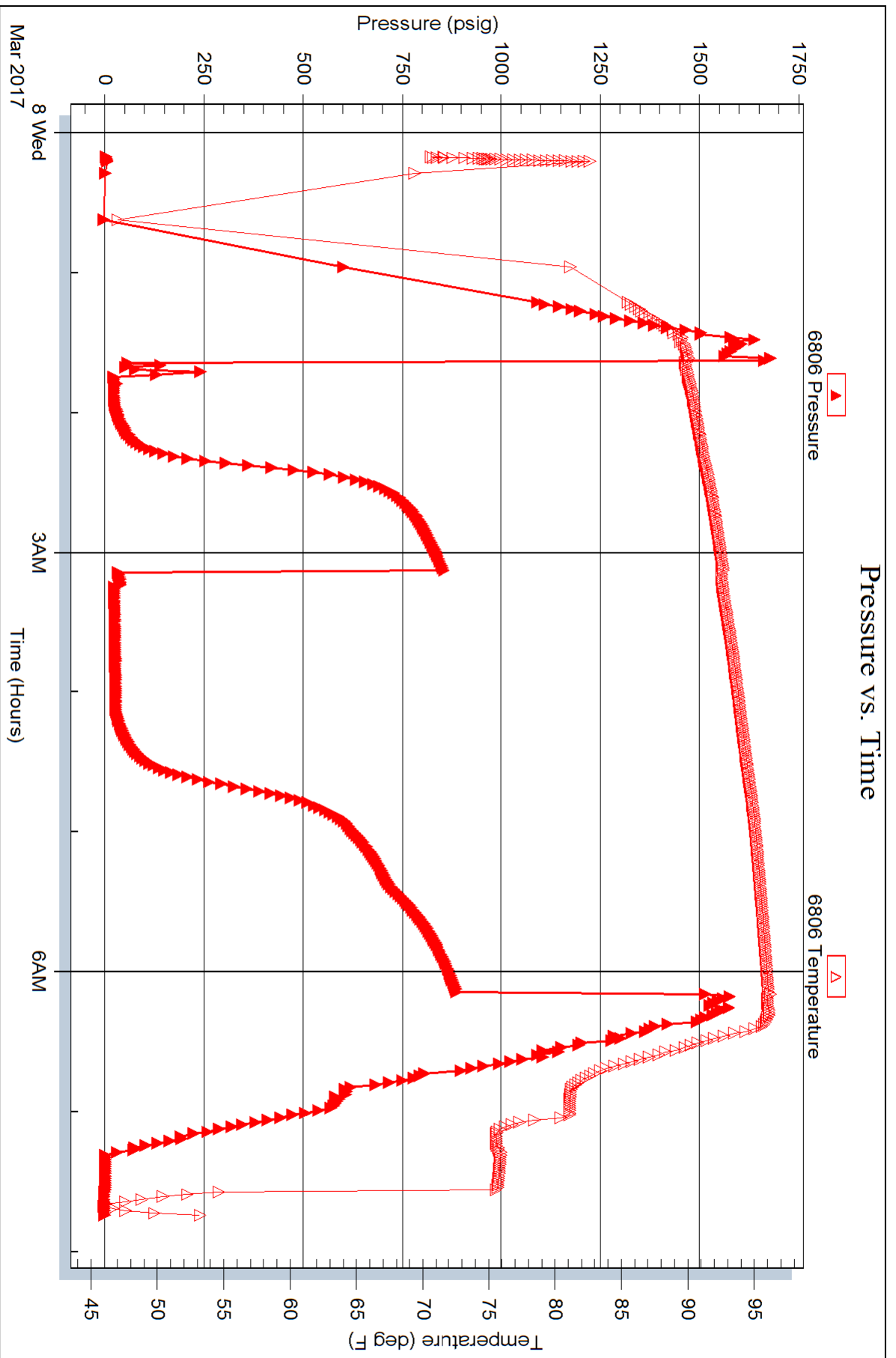
Num Fluid Samples: 0 Num Gas Bombs: 0 Serial #:

Laboratory Name: Laboratory Location:

Recovery Comments:

Pressure vs. Time







DRILL STEM TEST REPORT

Prepared For: **CMX Inc**

1700 N Waterfront Pkwy
Bldg 300B
Wichita, KS 67206

ATTN: Ken LeBlanc

Leghorn #1-22

22-20S-11W Barton,KS

Start Date: 2017.03.08 @ 19:46:49

End Date: 2017.03.09 @ 02:28:19

Job Ticket #: 63575 DST #: 5

Trilobite Testing, Inc
PO Box 362 Hays, KS 67601
ph: 785-625-4778 fax: 785-625-5620

Printed: 2017.03.09 @ 08:20:26



TRILOBITE TESTING, INC.

DRILL STEM TEST REPORT

CMX Inc
 1700 N Waterfront Pkw y
 Bldg 300B
 Wichita, KS 67206
 ATTN: Ken LeBlanc

22-20S-11W Barton,KS

Leghorn #1-22

Job Ticket: 63575

DST#: 5

Test Start: 2017.03.08 @ 19:46:49

GENERAL INFORMATION:

Formation: **Arbuckle**
 Deviated: No Whipstock: ft (KB)
 Time Tool Opened: 21:10:04
 Time Test Ended: 02:28:19
 Interval: **3308.00 ft (KB) To 3318.00 ft (KB) (TVD)**
 Total Depth: 3318.00 ft (KB) (TVD)
 Hole Diameter: 7.88 inches Hole Condition: Good
 Test Type: Conventional Bottom Hole (Reset)
 Tester: Leal Cason
 Unit No: 68
 Reference Elevations: 1768.00 ft (KB)
 1759.00 ft (CF)
 KB to GR/CF: 9.00 ft

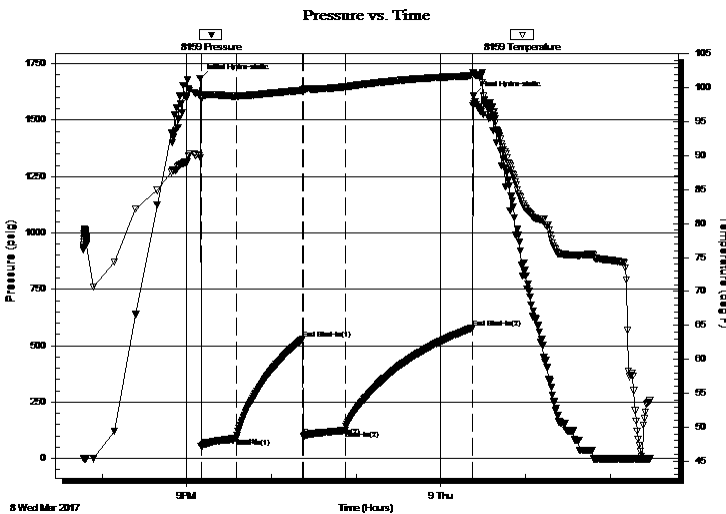
Serial #: 8159

Inside

Press@RunDepth: 125.40 psig @ 3309.00 ft (KB)
 Start Date: 2017.03.08 End Date: 2017.03.09
 Start Time: 19:46:50 End Time: 02:28:19
 Capacity: 8000.00 psig
 Last Calib.: 2017.03.09
 Time On Btm: 2017.03.08 @ 21:09:19
 Time Off Btm: 2017.03.09 @ 00:23:04

TEST COMMENT: IF: Strong Blow , BOB in 1 minute
 IS: No Blow Back
 FF: Strong Blow , BOB in 4 minutes
 FS: No Blow Back

PRESSURE SUMMARY



Time (Min.)	Pressure (psig)	Temp (deg F)	Annotation
0	1685.32	89.69	Initial Hydro-static
1	54.64	98.38	Open To Flow (1)
26	89.11	98.77	Shut-In(1)
73	529.33	99.62	End Shut-In(1)
74	99.26	99.67	Open To Flow (2)
103	125.40	100.13	Shut-In(2)
194	578.67	101.76	End Shut-In(2)
194	1606.58	102.10	Final Hydro-static

Recovery

Length (ft)	Description	Volume (bbl)
0.00	315 GIP	0.00
120.00	GMCO 10%G 10%M 80%O	1.68
187.00	Oil	2.62

* Recovery from multiple tests

Gas Rates

Choke (inches)	Pressure (psig)	Gas Rate (Mcf/d)



TRILOBITE TESTING, INC.

DRILL STEM TEST REPORT

CMX Inc
1700 N Waterfront Pkw y
Bldg 300B
Wichita, KS 67206
ATTN: Ken LeBlanc

22-20S-11W Barton,KS

Leghorn #1-22

Job Ticket: 63575

DST#: 5

Test Start: 2017.03.08 @ 19:46:49

GENERAL INFORMATION:

Formation: **Arbuckle**

Deviated: No Whipstock: ft (KB)

Time Tool Opened: 21:10:04

Time Test Ended: 02:28:19

Interval: **3308.00 ft (KB) To 3318.00 ft (KB) (TVD)**

Total Depth: 3318.00 ft (KB) (TVD)

Hole Diameter: 7.88 inches Hole Condition: Good

Test Type: Conventional Bottom Hole (Reset)

Tester: Leal Cason

Unit No: 68

Reference Elevations: 1768.00 ft (KB)

1759.00 ft (CF)

KB to GR/CF: 9.00 ft

Serial #: **6806** **Outside**

Press@RunDepth: psig @ 3309.00 ft (KB)

Start Date: 2017.03.08

End Date:

2017.03.09

Start Time: 19:46:50

End Time:

02:28:34

Capacity: 8000.00 psig

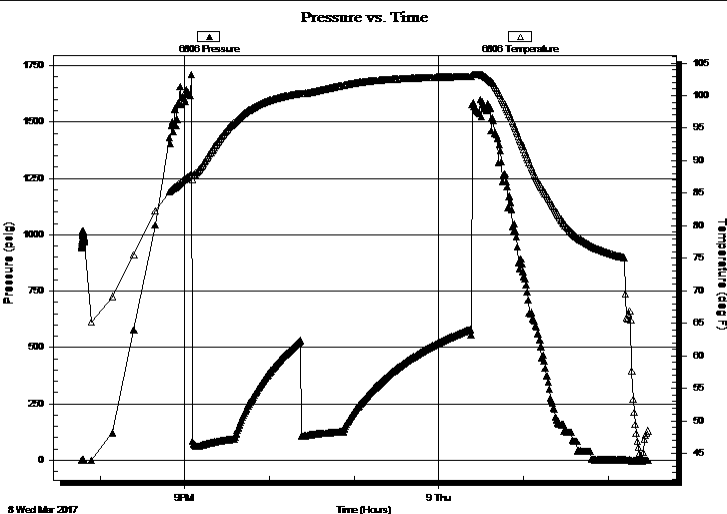
Last Calib.:

2017.03.09

Time On Btm:

Time Off Btm:

TEST COMMENT: IF: Strong Blow , BOB in 1 minute
IS: No Blow Back
FF: Strong Blow , BOB in 4 minutes
FS: No Blow Back



PRESSURE SUMMARY

Time (Min.)	Pressure (psig)	Temp (deg F)	Annotation

Recovery

Length (ft)	Description	Volume (bbl)
0.00	315 GIP	0.00
120.00	GMCO 10%G 10%M 80%O	1.68
187.00	Oil	2.62

* Recovery from multiple tests

Gas Rates

	Choke (inches)	Pressure (psig)	Gas Rate (Mcf/d)



**TRILOBITE
TESTING, INC.**

DRILL STEM TEST REPORT

TOOL DIAGRAM

CMX Inc
1700 N Waterfront Pkwy
Bldg 300B
Wichita, KS 67206
ATTN: Ken LeBlanc

22-20S-11W Barton, KS

Leghorn #1-22

Job Ticket: 63575

DST#: 5

Test Start: 2017.03.08 @ 19:46:49

Tool Information

Drill Pipe:	Length: 3313.00 ft	Diameter: 3.80 inches	Volume: 46.47 bbl	Tool Weight: 2100.00 lb
Heavy Wt. Pipe:	Length: 0.00 ft	Diameter: 0.00 inches	Volume: 0.00 bbl	Weight set on Packer: 25000.00 lb
Drill Collar:	Length: 0.00 ft	Diameter: 2.25 inches	Volume: 0.00 bbl	Weight to Pull Loose: 60000.00 lb
			<u>Total Volume: 46.47 bbl</u>	Tool Chased ft
Drill Pipe Above KB:	26.00 ft			String Weight: Initial 54000.00 lb
Depth to Top Packer:	3308.00 ft			Final 54000.00 lb
Depth to Bottom Packer:	ft			
Interval between Packers:	10.00 ft			
Tool Length:	31.00 ft			
Number of Packers:	2	Diameter: 6.75 inches		

Tool Comments:

Tool Description	Length (ft)	Serial No.	Position	Depth (ft)	Accum. Lengths
------------------	-------------	------------	----------	------------	----------------

Shut In Tool	5.00			3292.00	
Hydraulic tool	5.00			3297.00	
Safety Joint	2.00			3299.00	
Packer	5.00			3304.00	21.00 Bottom Of Top Packer
Packer	4.00			3308.00	
Stubb	1.00			3309.00	
Recorder	0.00	8159	Inside	3309.00	
Recorder	0.00	6806	Outside	3309.00	
Perforations	6.00			3315.00	
Bullnose	3.00			3318.00	10.00 Bottom Packers & Anchor
Total Tool Length:	31.00				



**TRILOBITE
TESTING, INC.**

DRILL STEM TEST REPORT

FLUID SUMMARY

CMX Inc
1700 N Waterfront Pkwy
Bldg 300B
Wichita, KS 67206
ATTN: Ken LeBlanc

22-20S-11W Barton,KS
Leghorn #1-22
Job Ticket: 63575 **DST#: 5**
Test Start: 2017.03.08 @ 19:46:49

Mud and Cushion Information

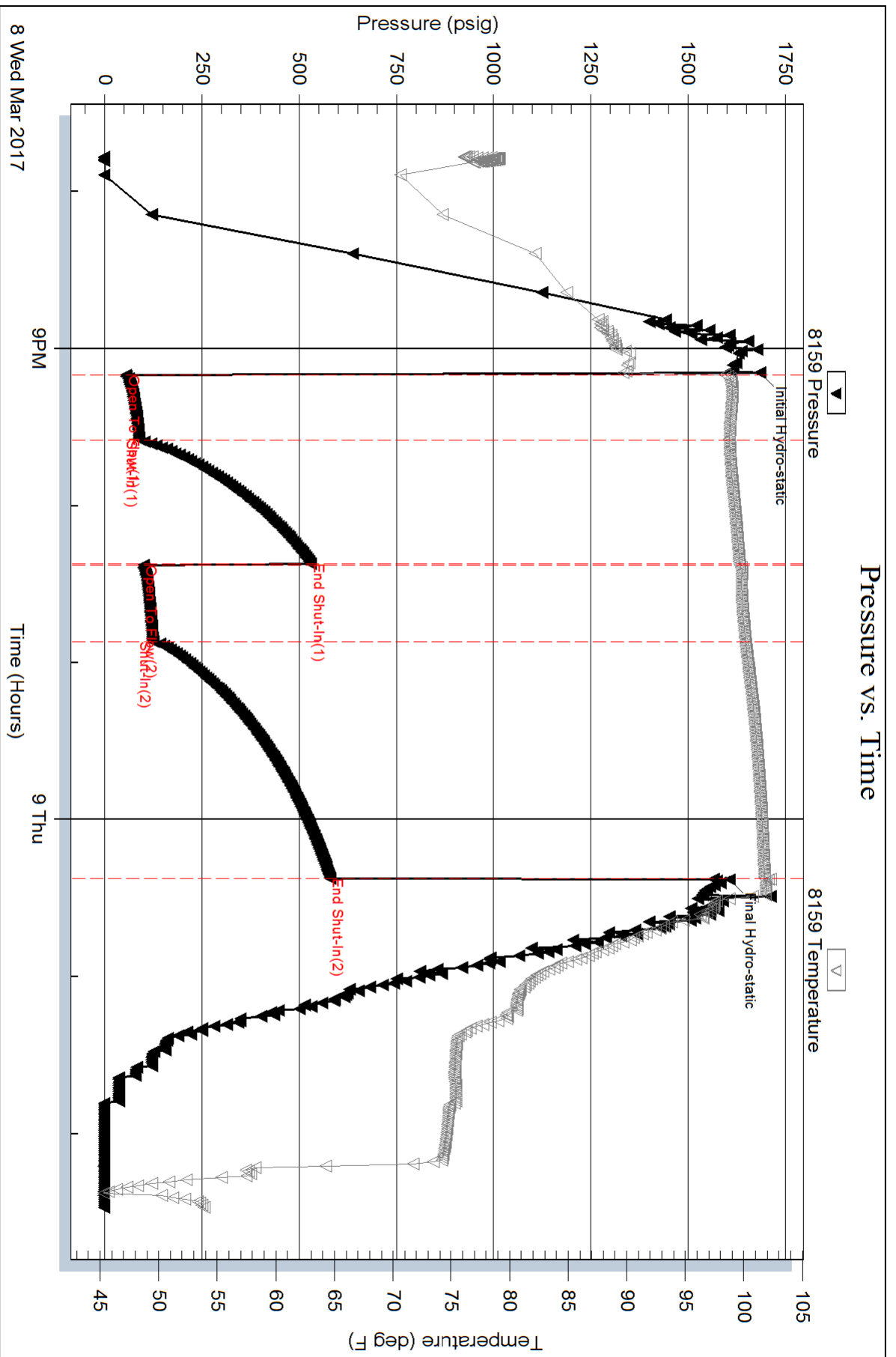
Mud Type: Gel Chem	Cushion Type:	Oil API: 41.6 deg API
Mud Weight: 9.00 lb/gal	Cushion Length: ft	Water Salinity: ppm
Viscosity: 53.00 sec/qt	Cushion Volume: bbl	
Water Loss: 7.17 in ³	Gas Cushion Type:	
Resistivity: ohm.m	Gas Cushion Pressure: psig	
Salinity: 5300.00 ppm		
Filter Cake: 0.02 inches		

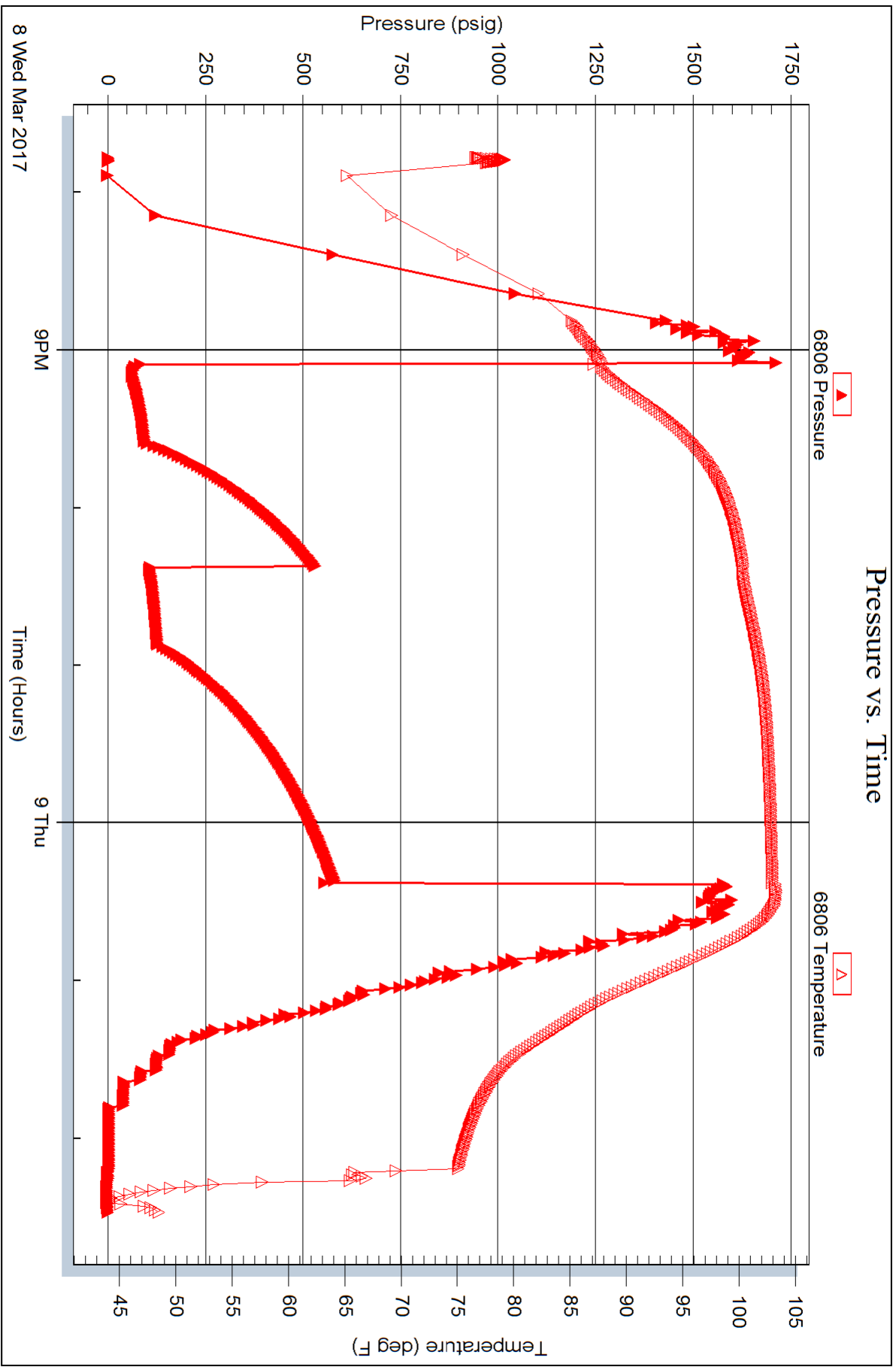
Recovery Information

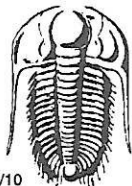
Recovery Table

Length ft	Description	Volume bbl
0.00	315 GIP	0.000
120.00	GMCO 10%G 10%M 80%O	1.683
187.00	Oil	2.623

Total Length: 307.00 ft Total Volume: 4.306 bbl
Num Fluid Samples: 0 Num Gas Bombs: 0 Serial #:
Laboratory Name: Laboratory Location:
Recovery Comments: Gravity w as 40.5 @ 49 degrees







TRILOBITE TESTING INC.

1515 Commerce Parkway • Hays, Kansas 67601

Test Ticket

NO. **63571** 23566

Well Name & No. Leghorn 1-22 Test No. 1 Date 03/05/17
 Company CMX inc Elevation 1768 KB 1759 GL
 Address 1700 N. Waterfront Pkwy Bldg 300B Wichita, KS 67206
 Co. Rep / Geo. Ken LeBlanc Rig Duke 2
 Location: Sec. 22 Twp. 20S Rge. 11W Co. Barton State KS

Interval Tested ~~3130~~ 3130 - 3140 Zone Tested Lansing "G"
 Anchor Length 10 Drill Pipe Run 3127 Mud Wt. 9.0
 Top Packer Depth 3125 Drill Collars Run 0 Vis 53
 Bottom Packer Depth 3130 Wt. Pipe Run 0 WL 7.2
 Total Depth 3140 Chlorides 5300 ppm System LCM

Blow Description IF: Strong Blow, BOB in 30seconds
ISF: 4 inch Blow Back
FF: Strong Blow, BOB in 1 minute, GTS in 22 minutes, caught sample, TSTM
FSI: 5 inch Blow Back

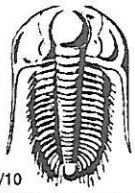
Rec	Feet of	%gas	%oil	%water	%mud
<u>1360</u>	<u>GTP</u>				
<u>3</u>	<u>oil</u>				
<u>63</u>	<u>0 MCW</u>	<u>14</u>	<u>54</u>	<u>32</u>	<u>0</u>
<u>252</u>	<u>0 MCW</u>	<u>10</u>	<u>80</u>	<u>10</u>	<u>0</u>
<u>1449</u>	<u>water</u>				

Rec Total 1767 BHT 101 Gravity NIC API RW .14 @ 55 ° F Chlorides 70000 ppm

(A) Initial Hydrostatic 1552 Test 1050 T-On Location 21:00
 (B) First Initial Flow 84 Jars _____ T-Started 22:08
 (C) First Final Flow 523 Safety Joint 75 T-Open 00:30
 (D) Initial Shut-In 1019 Circ Sub _____ T-Pulled 02:56
 (E) Second Initial Flow 525 Hourly Standby _____ T-Out 05:56
 (F) Second Final Flow 809 Mileage (110) 36rt 27 Comments _____
 (G) Final Shut-In 1028 Sampler _____
 (H) Final Hydrostatic 1528 Straddle _____
 Ruined Shale Packer _____
 Ruined Packer _____
 Extra Packer _____
 Extra Copies _____
 Initial Open 30 Extra Recorder _____ Sub Total 0
 Initial Shut-In 30 Day Standby _____ Total 1152
 Final Flow 30 Accessibility _____ MP/DST Disc't _____
 Final Shut-In 60 Sub Total 1152

Approved By Ken LeBlanc Our Representative [Signature]

Trilobite Testing Inc. shall not be liable for damaged of any kind of the property or personnel of the one for whom a test is made, or for any loss suffered or sustained, directly or indirectly, through the use of its equipment, or its statements or opinion concerning the results of any test, tools lost or damaged in the hole shall be paid for at cost by the party for whom the test is made.



TRILOBITE TESTING INC.

1515 Commerce Parkway • Hays, Kansas 67601

Test Ticket

NO. **63572**

Well Name & No. Leghorn 1-22 Test No. 2 Date 03/06/2017
 Company CMX INC Elevation 1768 KB 1759 GL
 Address 1700 N. Waterfront Pkwy Bldg 300 B Wichita, KS 67206
 Co. Rep / Geo. Ken LeBlanc Rig Duke 2
 Location: Sec. 22 Twp. 20S Rge. 11W Co. Barton State KS

Interval Tested 3172 - 3200 Zone Tested Lansing "H"
 Anchor Length 28 Drill Pipe Run 3158 Mud Wt. 9.0
 Top Packer Depth 3167 Drill Collars Run 0 Vis 53
 Bottom Packer Depth 3172 Wt. Pipe Run 0 WL 7.2
 Total Depth 3200 Chlorides 5300 ppm System LCM

Blow Description IF: Strong Blow, BOB in 1 minute
IST: No Blow Back
FF: Strong Blow, BOB in 30 seconds, GTS in 13 minutes, TSTM, caught sample
FSI: 2 inch Blow Back

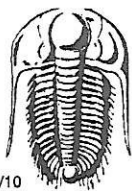
Rec	Feet of	%gas	%oil	%water	%mud
<u>3008</u>	<u>GIP</u>				
<u>30</u>	<u>oil</u>				
<u>120</u>	<u>GWMCO</u>	<u>25</u>	<u>60</u>	<u>5</u>	<u>10</u>

Rec Total 150 BHT 98° Gravity 39.7 API RW NIC @ NIC° F Chlorides NIC ppm

(A) Initial Hydrostatic <u>1597</u>	<input checked="" type="checkbox"/> Test <u>1050</u>	T-On Location <u>14:15</u>
(B) First Initial Flow <u>34</u>	<input type="checkbox"/> Jars	T-Started <u>14:58</u>
(C) First Final Flow <u>47</u>	<input checked="" type="checkbox"/> Safety Joint <u>75</u>	T-Open <u>16:25</u>
(D) Initial Shut-In <u>940</u>	<input type="checkbox"/> Circ Sub	T-Pulled <u>18:55</u>
(E) Second Initial Flow <u>45</u>	<input type="checkbox"/> Hourly Standby	T-Out <u>20:38</u>
(F) Second Final Flow <u>72</u>	<input checked="" type="checkbox"/> Mileage <u>110</u> <u>27</u>	Comments
(G) Final Shut-In <u>938</u>	<input type="checkbox"/> Sampler	
(H) Final Hydrostatic <u>1567</u>	<input type="checkbox"/> Straddle	<input type="checkbox"/> Ruined Shale Packer
Initial Open <u>30</u>	<input type="checkbox"/> Shale Packer	<input type="checkbox"/> Ruined Packer
Initial Shut-In <u>30</u>	<input type="checkbox"/> Extra Packer	<input type="checkbox"/> Extra Copies
Final Flow <u>30</u>	<input type="checkbox"/> Extra Recorder	Sub Total <u>0</u>
Final Shut-In <u>60</u>	<input type="checkbox"/> Day Standby	Total <u>1152</u>
	<input type="checkbox"/> Accessibility	MP/DST Disc't
	Sub Total <u>1152</u>	

Approved By Ken LeBlanc Our Representative [Signature]

Trilobite Testing Inc. shall not be liable for damaged of any kind of the property or personnel of the one for whom a test is made, or for any loss suffered or sustained, directly or indirectly, through the use of its equipment, or its statements or opinion concerning the results of any test, tools lost or damaged in the hole shall be paid for at cost by the party for whom the test is made.



TRILOBITE TESTING INC.

1515 Commerce Parkway • Hays, Kansas 67601

Test Ticket

NO. **63573**

Well Name & No. Leghorn 1-22 Test No. 3 Date 03/07/17
 Company CMX inc Elevation 1768 KB 1759 GL
 Address 1700 N. Waterfront Pkwy Bldg 300 B Wichita, KS 67206
 Co. Rep / Geo. Ken LeBlanc Rig Duke 2
 Location: Sec. 22 Twp. 20S Rge. 11W Co. Barton State KS

Interval Tested 3260 - 3307 Zone Tested Arbuckle
 Anchor Length 47 Drill Pipe Run 3251 Mud Wt. 9.1
 Top Packer Depth 3255 Drill Collars Run 0 Vis 57
 Bottom Packer Depth 3260 Wt. Pipe Run 0 WL 7.6
 Total Depth 3307 Chlorides 8300 ppm System LCM

Blow Description FF: weak Blow Built to 1 3/4 inch

ISI: NO Blow Back

FF: weak Blow Built to 4 1/2 inches, Died off to 2 inches

FSI: NO Blow Back

Rec	Feet of	%gas	%oil	%water	%mud
<u>135</u>	<u>GIP</u>				
<u>25</u>	<u>MCO</u>		<u>70</u>		<u>30</u>

Rec Total 25 BHT 97 Gravity NIC API RW NIC @ NIC °F Chlorides NIC ppm

(A) Initial Hydrostatic 1659
 (B) First Initial Flow 84
 (C) First Final Flow 32
 (D) Initial Shut-In 987
 (E) Second Initial Flow 35
 (F) Second Final Flow 45
 (G) Final Shut-In 764
 (H) Final Hydrostatic 1583

Test 1050
 Jars
 Safety Joint 75
 Circ Sub
 Hourly Standby
 Mileage (1105) 27
 Sampler
 Straddle
 Shale Packer
 Extra Packer
 Extra Recorder
 Day Standby
 Accessibility
 Sub Total 1152

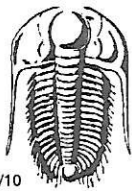
T-On Location 11:30
 T-Started 11:52
 T-Open 13:16
 T-Pulled 16:20
 T-Out 17:49
 Comments
 Ruined Shale Packer
 Ruined Packer
 Extra Copies
 Sub Total 0
 Total 1152
 MP/DST Disc't

Initial Open 30
 Initial Shut-In 45
 Final Flow 45
 Final Shut-In 60

Approved By Ken LeBlanc

Our Representative [Signature]

Trilobite Testing Inc. shall not be liable for damaged of any kind of the property or personnel of the one for whom a test is made, or for any loss suffered or sustained, directly or indirectly, through the use of its equipment, or its statements or opinion concerning the results of any test, tools lost or damaged in the hole shall be paid for at cost by the party for whom the test is made.



TRILOBITE TESTING INC.

1515 Commerce Parkway • Hays, Kansas 67601

Test Ticket

NO. **63574**

Well Name & No. Lehigh 1-22 Test No. 4 Date 03/08/17
 Company CMX inc Elevation 1768 KB 1759 GL
 Address 1700 N. waterfront pkwy Bldg 300B Wichita, KS 67206
 Co. Rep / Geo. Ken LeBlanc Rig Duke 2
 Location: Sec. 22 Twp. 20S Rge. 11W Co. Barton State KS

Interval Tested 3265 - 3312 Zone Tested Arbuckle
 Anchor Length 47 Drill Pipe Run 3251 Mud Wt. 9.1
 Top Packer Depth 3260 Drill Collars Run 0 Vis 53
 Bottom Packer Depth 3265 Wt. Pipe Run 0 WL 7.6
 Total Depth 3312 Chlorides 8300 ppm System LCM

Blow Description IF: weak 1/2 inch Blow
ISL: NO Blow Back
EF: weak 2 inch Blow
FSI: NO Blow Back

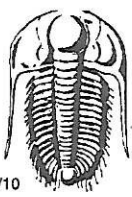
Rec	Feet of	%gas	%oil	%water	%mud
<u>150</u>	<u>GTP</u>				
<u>30</u>	<u>GOCM</u>	<u>12</u>	<u>24</u>		<u>64</u>

Rec Total 230 BHT 96 Gravity NIC API RW NIC @ NIC °F Chlorides NIC ppm
 Test 1050 T-On Location 23:30
 Jars _____ T-Started 00:10
 Safety Joint 75 T-Open 01:40
 Circ Sub _____ T-Pulled 06:08
 Hourly Standby _____ T-Out 07:44
 Mileage 1100 27 Comments _____
 Sampler _____
 Straddle _____
 Shale Packer _____
 Extra Packer _____
 Extra Recorder _____
 Day Standby _____
 Accessibility _____
 Sub Total 1152

Initial Open 30
 Initial Shut-In 60
 Final Flow 60
 Final Shut-In 120

Approved By Ken LeBlanc Our Representative _____

Trilobite Testing Inc. shall not be liable for damaged of any kind of the property or personnel of the one for whom a test is made, or for any loss suffered or sustained, directly or indirectly, through the use of its equipment, or its statements or opinion concerning the results of any test, tools lost or damaged in the hole shall be paid for at cost by the party for whom the test is made.



TRILOBITE TESTING INC.

1515 Commerce Parkway • Hays, Kansas 67601

Test Ticket

NO. **63575**

Well Name & No. Lehigh 1-22 Test No. 5 Date 03/09/17
 Company CMX inc Elevation 1768 KB 1759 GL
 Address 1700 N. Waterfront Pkwy Bldg 300B Wichita, KS 67206
 Co. Rep / Geo. Ken LeBlanc Rig Duke 2
 Location: Sec. 22 Twp. 20S Rge. 11W Co. Duke 2 State _____

Interval Tested 3308 - 3318 Zone Tested Arbuckle
 Anchor Length 10 Drill Pipe Run 3313 Mud Wt. 9.1
 Top Packer Depth 3300 Drill Collars Run 0 Vis 58
 Bottom Packer Depth 3308 Wt. Pipe Run 0 WL 7.8
 Total Depth 3318 Chlorides 8500 ppm System LCM _____

Blow Description IF: STRONG BLOW, BOB in 1 minute

ISI: NO BLOW BACK

FF: STRONG BLOW, BOB in 4 minutes

FSI: NO BLOW BACK

Rec	Feet of	%gas	%oil	%water	%mud
<u>315</u>	<u>GIP</u>				
<u>187</u>	<u>oil</u>				
<u>120</u>	<u>GMCO</u>	<u>10%</u>	<u>90%</u>		<u>10%</u>
____	____	%gas	%oil	%water	%mud
____	____	%gas	%oil	%water	%mud

Rec Total 307 BHT 102 Gravity 41.6 API RW NK @ NK °F Chlorides NK ppm

(A) Initial Hydrostatic 1675
 (B) First Initial Flow 55
 (C) First Final Flow 89
 (D) Initial Shut-In 529
 (E) Second Initial Flow 99
 (F) Second Final Flow 125
 (G) Final Shut-In 579
 (H) Final Hydrostatic 1606

Test 1050
 Jars _____
 Safety Joint 75
 Circ Sub _____
 Hourly Standby _____
 Mileage 1102 36rt 27
 Sampler _____
 Straddle _____
 Shale Packer _____
 Extra Packer _____
 Extra Recorder _____
 Day Standby _____
 Accessibility _____
 Sub Total 1152

T-On Location 19:30
 T-Started 19:46
 T-Open 21:10
 T-Pulled 00:22
 T-Out 02:28
 Comments _____
 Ruined Shale Packer _____
 Ruined Packer _____
 Extra Copies _____
 Sub Total 0
 Total 1152
 MP/DST Disc't _____

Initial Open 30
 Initial Shut-In 45
 Final Flow 30
 Final Shut-In 90

Approved By Ken LeBlanc

Our Representative _____

TriLOBITE TESTING INC. shall not be liable for damaged of any kind of the property or personnel of the one for whom a test is made, or for any loss suffered or sustained, directly or indirectly, through the use of its equipment, or its statements or opinion concerning the results of any test, tools lost or damaged in the hole shall be paid for at cost by the party for whom the test is made.