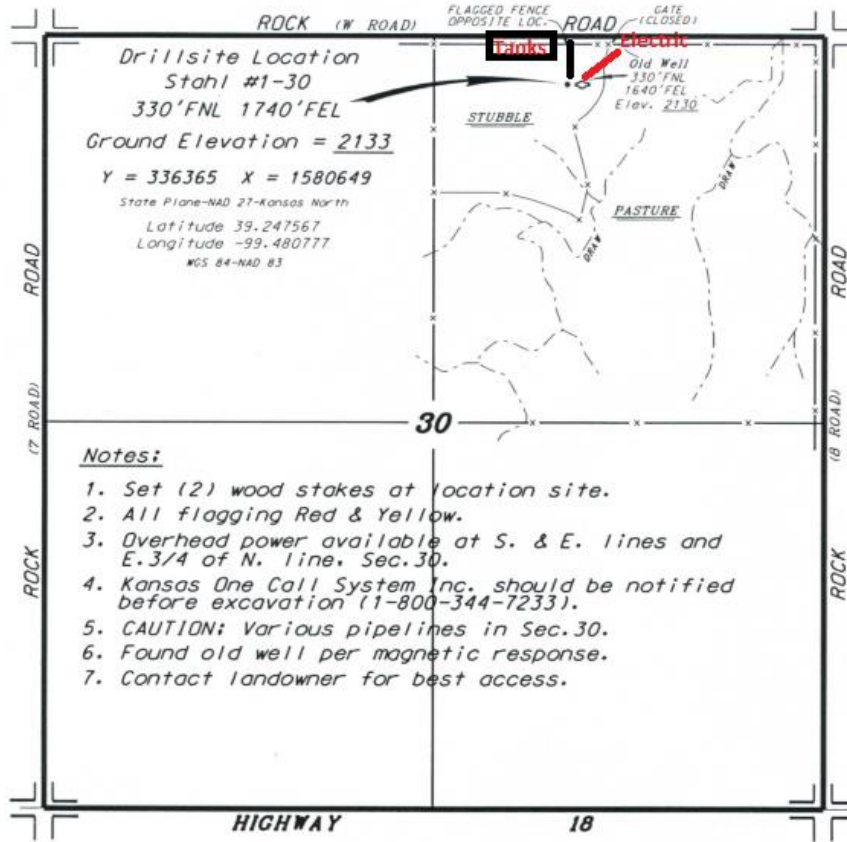


AMERICAN OIL, LLC
 STAHL LEASE
 NE. 1/4, SECTION 30, T9S, R19W
 ROOKS COUNTY, KANSAS



*Ingress and egress to location as shown on this plat is for usage only and may not be legally opened for public use. Contact landowner, tenant and county road department for access.

SCALE 1" = 1000'

