

Main Office
 2908 North Plum Street
 Hutchinson, KS 67502
 Office: (620) 665-7032
 Fax: (620) 663-7401



Garber Surveying Service, P.A.

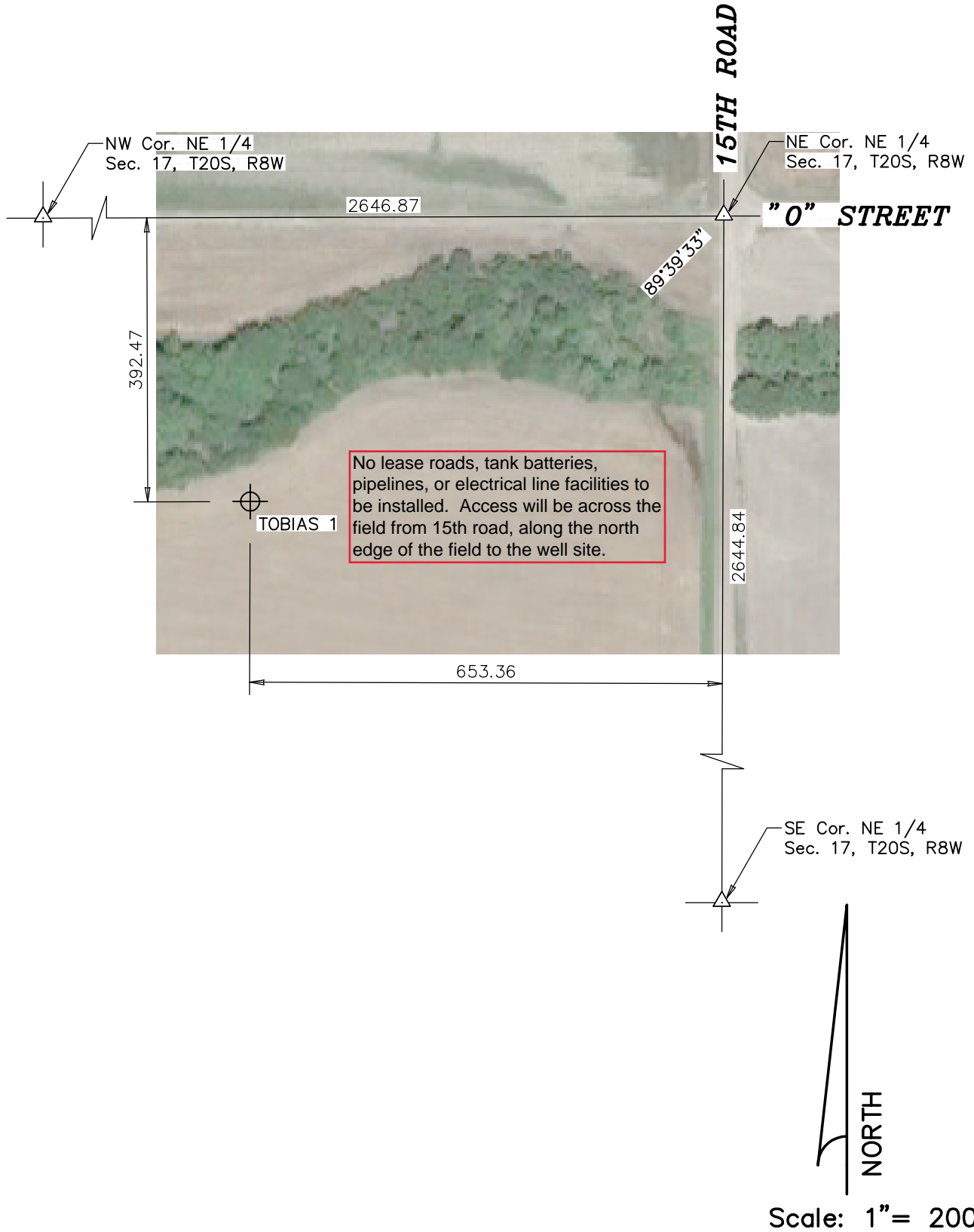
Branch Offices
 511 North Poplar Street
 Newton, KS 67114
 Office: (316) 283 - 5053
 Fax: (316) 283 - 5073

115 East Marlin, Suite 102
 McPherson, KS. 67460
 Office: (620) 241-4441
 Fax: (620) 241-4458

SURVEY FOR: LYONS SALT

Project No. G2017-237

DESCRIPTION: Well named "Tobias No. 1" location in the Northeast Quarter of Section 17, Township 20 South, Range 4 West of the 6th Principal Meridian in Rice County, Kansas.



Saved 4/21/2017 9:36:46 AM by BARNOLD
 Plot Date & Time Friday, April 21, 2017 9:38:10 AM Dwg Path: U:\DD\GSSFILES\2017\20170237_C3d\dwg\20170237_LCS (Nobatum)