



## Cement Job Summary

|                                     |   |                             |                        |
|-------------------------------------|---|-----------------------------|------------------------|
| Job Number: <b>Lib1704211600</b>    |   | Job Purpose: <b>03 Plug</b> |                        |
| Customer:                           | <b>Suemaaur Exploration &amp; Production, LLC</b> |                             | Date: <b>4/23/2017</b> |
| Well Name: <b>Moss</b>              | Number: <b>1-15</b>                               |                             | API/UWI:               |
| County: <b>Sheridan</b>             | City: <b>Hoxie, Kansas</b>                        |                             | State: <b>KS</b>       |
| Cust. Rep:                          | Phone:  | Rig Phone:                  |                        |
| Legal Desc:                         |   | Rig Name: <b>Murfin#7</b>   |                        |
| Distance: <b>50 miles (one way)</b> |   | Supervisor:                 | <b>James Peppin</b>    |

| Employees:    | Emp. ID: | Employees: | Emp. ID: |
|---------------|----------|------------|----------|
| James Peppin  |          | Jose Trejo |          |
| Carlos Ibarra |          |            |          |

| Equipment:  | Emp. ID:      |
|-------------|---------------|
| 994-4/550-5 | 994-4 / 467-5 |

| Well Information  |            |              |             |             |             |             |
|-------------------|------------|--------------|-------------|-------------|-------------|-------------|
| Open Hole Section |            |              |             |             |             |             |
| Description:      | Size (in): | Excess       | Top MD (ft) | Btm MD (ft) |             |             |
| OPEN HOLE         | 7 7/8      |              |             | 5,950       | TAIL CEMENT |             |
| OPEN HOLE         | 7 7/8      |              |             |             | LEAD CEMENT |             |
| OPEN HOLE         | 7 7/8      |              |             |             |             |             |
| OPEN HOLE         | 7 7/8      |              |             |             |             |             |
| Tubulars          |            |              |             |             |             |             |
| Description:      | Size (in): | Wgt. (lb/ft) | ID (in)     | Grade:      | Top MD (ft) | Btm MD (ft) |
| PREVIOUS CASING   | 8 5/8      | 24           | 8.097       |             | 0           | 1,740       |

| Materials - Pumping Schedule |                                    |               |               |             |                |  |
|------------------------------|------------------------------------|---------------|---------------|-------------|----------------|--|
| Fluid Name                   | Description                        | Rqstd Qty     | Density       | Yield       | Water (gal/sk) |  |
| Tail 1                       | ALLIED 40/60/4 POZ BLEND - CLASS A | 260           | 13.78         | 1.43        | 6.90           |  |
| Addl. Additive               | Description                        | Conc. (lb/sk) | Determined by | Load Volume | UOM            |  |
| CLC-CPF                      | CELLOPHANE FLAKES                  | 0.25          | lb/sk         | 65.0        | lbm            |  |

|                                     |   |                             |                        |
|-------------------------------------|---|-----------------------------|------------------------|
| Job Number: <b>Lib1704211600</b>    |   | Job Purpose: <b>03 Plug</b> |                        |
| Customer:                           | <b>Suemaaur Exploration &amp; Production, LLC</b> |                             | Date: <b>4/23/2017</b> |
| Well Name: <b>Moss</b>              | Number: <b>1-15</b>                               |                             | API/UWI:               |
| County: <b>Sheridan</b>             | City: <b>Hoxie, Kansas</b>                        |                             | State: <b>KS</b>       |
| Cust. Rep:                          | Phone:  | Rig Phone: <b>0</b>         |                        |
| Distance: <b>50 miles (one way)</b> |   | Supervisor:                 | <b>James Peppin</b>    |

| TIME  | PRESSURE - (PSI) |         | FLUID PUMPED DATA |            | COMMENTS  |
|-------|------------------|---------|-------------------|------------|---|
|       | CASING           | ANNULUS | VOLUME            | RATE (BPM) |   |
| 12:26 |                  |         |                   |            | On location @12:26 pm                               |
|       |                  |         |                   |            | Rigging up to well head                             |
| 13:00 |                  |         |                   |            | Safety meeting with company man                     |
|       |                  |         |                   |            |   |
| 13:20 | 340              |         | 3                 | 4          | <b>Plug @ 2550' 3 bbls of water ahead of cement</b> |
| 13:29 | 280              |         | 12                | 3          | Mixing 50sk of cement @ 13.6 wt                     |
| 13:32 | 210              |         | 1                 | 2          | displacement of 1 bbls of h20 behind                |
| 13:33 |                  |         | 30                |            | rig disp 30 bbls of mud behind                      |
| 14:12 | 230              |         | 3                 | 3          | <b>Plug @ 1700' Pumping 3bbls of water</b>          |
| 13:14 | 170              |         | 25                | 3          | mixing 100 sks cement @ 13.6 wt                     |
| 14:22 | 80               |         | 1                 | 2          | Displacement of 1 bbls h20 behind                   |

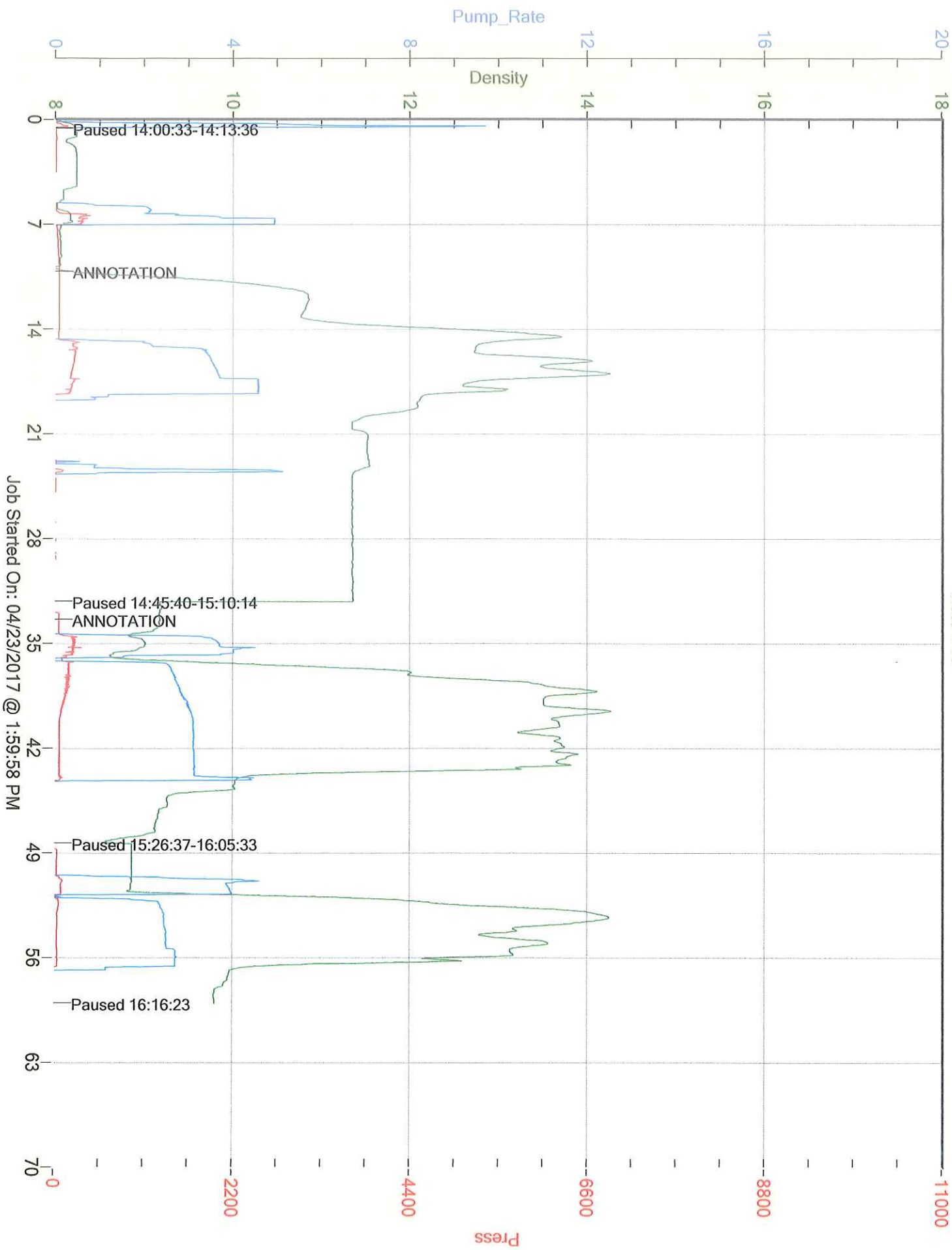


### *Cement Job Summary*

|       |     |  |    |   |  |
|-------|-----|--|----|---|--|
| 14:23 |     |  | 17 |   | rig disp 17 bbls of mud                      |
| 15:00 | 100 |  | 3  | 3 | <b>Plug @ 350' Plug pump 3 bbl h20 ahead</b> |
| 15:03 | 50  |  | 12 | 3 | mix 50 sks of cement @ 13.6 wt               |
| 15:08 | 20  |  | 1  | 3 | <b>disp 1 bbl of h20 behind</b>              |
| 15:30 | 30  |  | 25 | 3 | Plug @ 40 ' pump 10 sks cmenet @ 13.6        |
|       |     |  |    |   | circ cment to surf                           |
| 15:40 |     |  | 7  | 2 | fill up rat hole with cement                 |
| 15:45 |     |  | 5  | 2 | fill up mouse hole with cement               |
|       |     |  |    |   |  |
|       |     |  |    |   | shut down and rig down the crew and          |
|       |     |  |    |   | I thank the customer for the job             |
|       |     |  |    |   |  |
|       |     |  |    |   |  |



# Suemaur Moss 1-15





**CEMENT MIXING WATER GUIDELINES**

Company Name: Suemaur Exploration & Production, LLC

Lease Name: Moss # 1-15

County Sheridan State KS

Water Source: TANK

Submitted By: James Peppin Date: 4/23/2017

pH Level 7 Must be less than 8.5

Sulfates 400 Must be less than 1,000 PPM

Chlorides 0 Must be less than 3,000 PPM

Temperature 64

**COMMENTS**

Customer Signature \_\_\_\_\_

Thank You