

OPERATOR

Company: JASON OIL COMPANY, LLC
 Address: 3718 - 183RD STREET
 RUSSELL, KS 67665

Contact Geologist: JIM SCHOENBERGER
 Contact Phone Nbr: 785-483-4204
 Well Name: HOEME #1
 Location: N2 NE SE NW S31 T14S R32W
 API: 15-109-21495
 Pool:
 State: KANSAS

Field: WILDCAT
 Country: USA

Scale 1:240 Imperial

Well Name: HOEME #1
 Surface Location: N2 NE SE NW S31 T14S R32W
 Bottom Location:
 API: 15-109-21495
 License Number: 33813
 Spud Date: 4/3/2017 Time: 8:00 PM
 Region: LOGAN COUNTY
 Drilling Completed: 4/8/2017 Time: 3:43 PM
 Surface Coordinates: 1630 FNL & 2970 FEL
 Bottom Hole Coordinates:
 Ground Elevation: 2795.00ft
 K.B. Elevation: 5.00ft
 Logged Interval: 3300.00ft To: 4500.00ft
 Total Depth: 4500.00ft
 Formation: LANSING-KANSAS CITY
 Drilling Fluid Type: CHEMICAL / FRESH WATER GEL

SURFACE CO-ORDINATES

Well Type: Vertical
 Longitude: -100.921010
 Latitude: 38.795834
 N/S Co-ord: 1630 FNL
 E/W Co-ord: 2970 FEL

LOGGED BY

Company: FOSSIL FUEL GEOLOGICAL SERVICES, LLC
 Address: 1626 MOUNT PLEASANT ROAD
 HAYS, KANSAS 67601

Phone Nbr: 785-650-4540
 Logged By: Geologist Name: STEVE REED

CONTRACTOR

Contractor: WW DRILLING, INC
 Rig #: 10
 Rig Type: MUD ROTARY
 Spud Date: 4/3/2017 Time: 8:00 PM
 TD Date: 4/8/2017 Time: 3:43 PM
 Rig Release: 4/10/2017 Time: 12:00 PM

ELEVATIONS

K.B. Elevation: 5.00ft Ground Elevation: 2795.00ft
 K.B. to Ground: 5.00ft

NOTES

BASED ON LACK OF SIGNIFICANT SHOWS AND WELL LOG ANALYSIS THE DECISION WAS MADE TO PLUG AND ABANDON THE HOEME #1.

GEOLOGICAL SUPERVISION BY: STEVE REED

FORMATION TOPS SUMMARY

		BLACK TEA OIL, LLC				LANDMARK RESOURCES				LANDMARK RESOURCES							
		HOEME #2				OTTLEY #1-31				FAIRLEIGH #1-6							
		SE SW SW 530 145 32W				NW SE SE 511 145 32W				NE NE SW NW 56 155 32W							
		Hoeme #1		2795		2796		2828		2773							
		LOG TOPS		SAMPLE TOPS		LOGS		LOG		SMPL.		LOGS		LOG		SMPL.	
FORMATION	DEPTH	DATUM	DEPTH	DATUM	DEPTH	DATUM	LOG CORR.	SMPL. CORR.	DEPTH	DATUM	CORR.	CORR.	DEPTH	DATUM	CORR.	CORR.	
ANHYDRITE TOP	2226	574	2230	570	2217	581	-7	11	2247	581	-7	11	2198	575	-3	5	
BASE	2246	554	2252	548	2238	560	0	12	2268	560	6	12	2220	553	1	5	
TOPEKA	3517	717	3522	722	3502	704	13	18	3530	702	15	20	3489	716	1	6	
HEBNER	3740	540	3742	542	3730	532	8	10	3756	528	12	14	3713	540	0	2	
TORONTO	3768	568	3762	562	3750	552	15	10	3776	548	20	14					
LKC	3787	587	3780	580	3772	574	13	6	3798	570	17	10	3755	582	5	2	
RKC	4106	1306	4102	1302	4092	1294	12	8	4116	1288	18	14					
MARMATON	4144	1344	4130	1339	4130	1332	12	7	4155	1327	17	12					
ALTAMONT	4162	1362	4157	1357	4149	1351	11	6	4175	1347	15	10					
PAWNEE	4244	1444	4240	1440	4230	1432	12	8	4256	1428	16	12	4213	1440	4	0	
HEBI SEPTI	4296	1496	4290	1480	4283	1483	15	7	4308	1480	18	10					
CHEROKEE	4326	1526	4315	1515	4307	1509	17	6	4336	1508	18	7	4293	1520	6	5	
MISSISSIPPIAN	4468	1668	4465	1665	4465	1628	40	37	4457	1629	39	38	4401	1628	40	37	
TOTAL DEPTH	4501	1701	4500	1700	4522	1784	88	84	4500	1681	20	19	4470	1697	4	3	

ROCK TYPES

	Lmst fw7>		shale, gry		shale, red
	shale, grn		Carbon Sh		Ss

ACCESSORIES

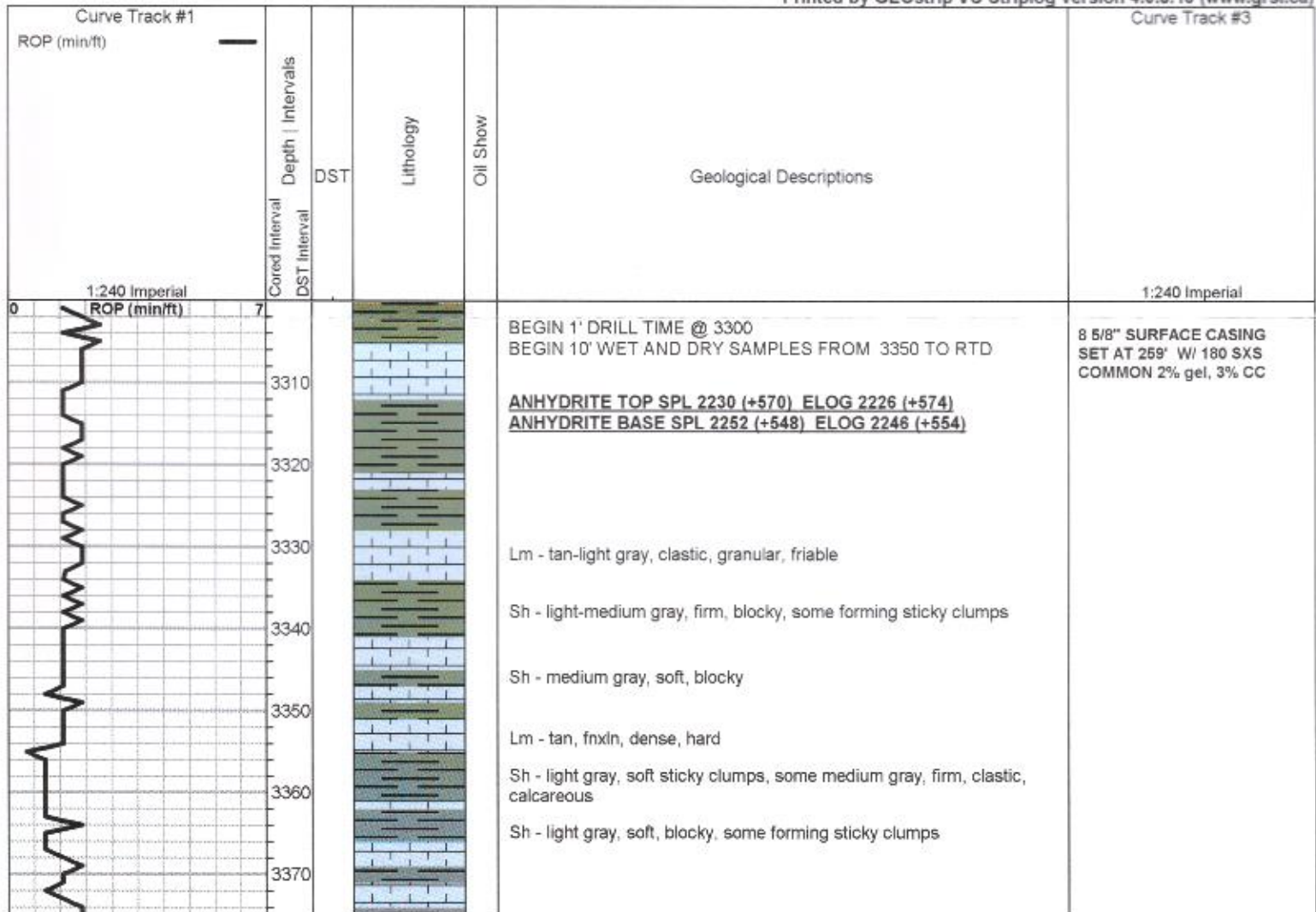
MINERAL
P Pyrite

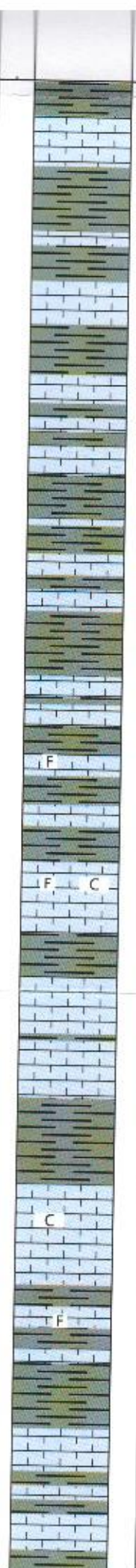
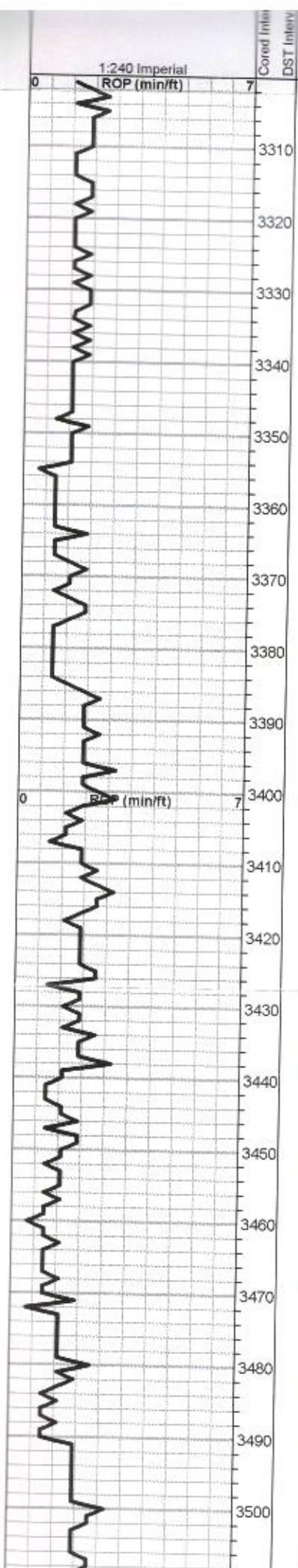
FOSSIL
F Fossils < 20%
O Oolite
Fussulinid

STRINGER
Chert

TEXTURE
C Chalky
L Lithog

Printed by GEOstrip VC Striplog version 4.0.8.15 (www.grsi.ca)





BEGIN 1' DRILL TIME @ 3300
 BEGIN 10' WET AND DRY SAMPLES FROM 3350 TO RTD

ANHYDRITE TOP SPL 2230 (+570) ELOG 2226 (+574)
ANHYDRITE BASE SPL 2252 (+548) ELOG 2246 (+554)

Lm - tan-light gray, clastic, granular, friable

Sh - light-medium gray, firm, blocky, some forming sticky clumps

Sh - medium gray, soft, blocky

Lm - tan, fnxn, dense, hard

Sh - light gray, soft sticky clumps, some medium gray, firm, clastic, calcareous

Sh - light gray, soft, blocky, some forming sticky clumps

Sh - medium to dark gray, firm, gritty, silty

Lm - tan, clastic with fine interxn porosity, some medium gray fnxn

Lm - tan, fossiliferous with fine interparticle porosity

F

Lm - tan-light brown, fossiliferous, interxn porosity, dense, slight bedded chalk

F C

Sh - light gray, soft, calcareous, some forming sticky clumps

Lm - medium brown, vfxn, dense, sharp, brittle

Lm - tan with dark clastic particles, medxn to granular, bedded chalk in part

Sh - medium gray, firm, gritty

C

Lm - cream, granular, easily crushed, bedded chalk

F

Lm - tan, fnxn, slightly fossiliferous, dense, brittle

Sh - medium gray, firm, blocky

Lm - medium brown, fnxn, dense, hard

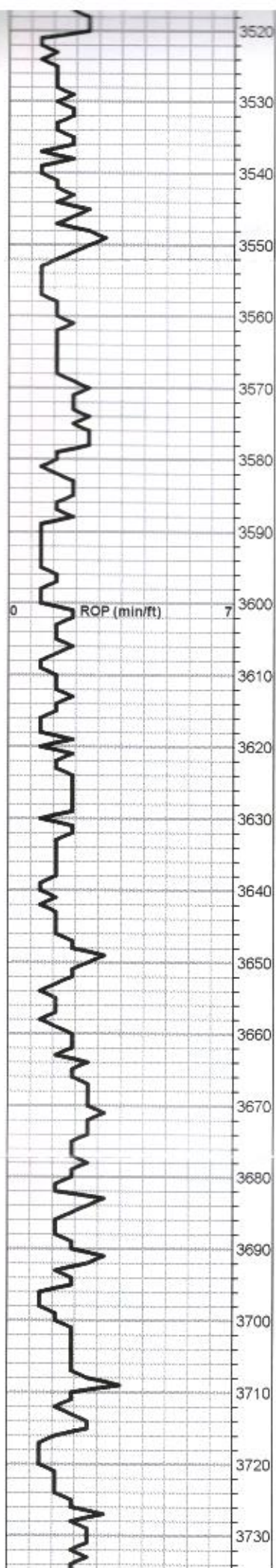
Sh - medium gray, firm, pyrite specks

Lm - tan, medium brown, fine interxn porosity, clastic, well cemented, dense

1:240 Imperial

8 5/8" SURFACE CASING
 SET AT 259' W/ 180 SXS
 COMMON 2% gel, 3% CC

MUD WT. 8.7
 VIS 68
 LCM 3#



Lm - cream, fnxn, dense, brittle, fusilinids

Lm - cream-tan, granular, well cemented, slightly fossiliferous, slightly chalky

Lm - tan, fn-medxn, hard, brittle, sharp

Lm - off white, granular, poorly cemented, friable, white sticky chalk clumps

Sh - dark green, soft, blocky

Sh - gray/green, soft, blocky

Lm - light brown-gray, fnxn, slightly fossiliferous, bedded chalk

Lm - tan, medxn, dense, bedded chalk in part

Lm - cream-tan, medxn, chalky in part, cherty

Sh - light gray, soft, blocky, gritty

Lm - tan, fnxn, dense, hard, brittle

Lm - tan, fn-medxn, slightly fossiliferous, bone white chert

Sh - black, carbonaceous, firm, waxy, bronze flecks

Lm - cream-tan, fnxn, brittle, cherty

Sh - medium gray, soft, blocky

Lm - cream, granular, clastic, easily crushed

Sh - light gray, soft, gritty

Lm - tan, fnxn, dense, hard, pyrite clusters

Sh - black, carbonaceous, waxy

Lm - tan, vfxn, slightly lithographic, hard, clean and barren

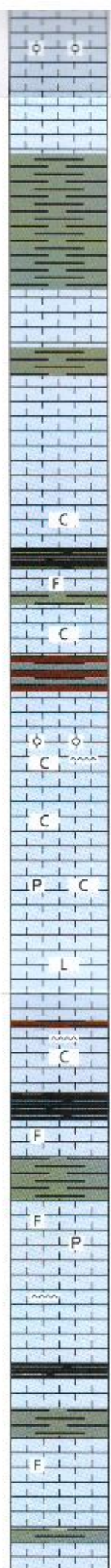
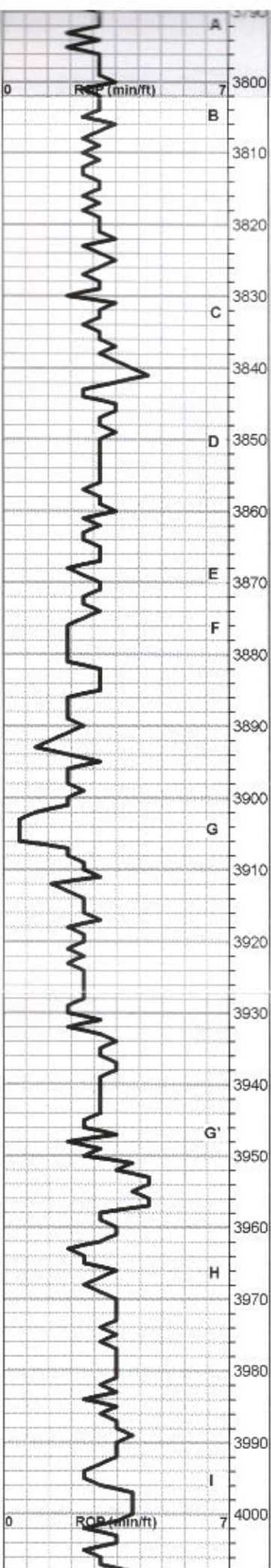
Sh - medium gray, soft, blocky

Lm - cream, fnxn, slightly fossiliferous, gray chert pieces

Lm - cream-tan, fnxn, slightly chalky

Lm - cream-light gray, slightly fossiliferous, fine interxn porosity, bedded chalk

Sh - dark gray, firm, blocky



Lm - cream, vfxln, dense, hard

○ Lm - cream, scattered oolites, poorly developed, scattered interxn porosity with light staining and rare vugs, faint odor, NSFO

Lm - cream, bright, vfxln, dense, hard, clean and barren, no devo

Sh - light-medium gray, soft, some sticky

Lm - tan-light brown, very hard, fn interxn porosity with some secondary recrystallization, clean and barren, poor development

Lm - cream, vfxln, brittle, clean and barren

○ Lm - cream, fnxln, scattered pinpoint porosity, scattered stain, no odor, NSFO

Lm - cream, fnxln, brittle, bedded chalk in part, poor development

Sh - dark gray, some black carbonaceous

Lm - tan, fnxln, slightly fossiliferous, hard, no shows

Lm - tan, vfxln, clean and barren, chalky

Sh - maroon-gray, soft, blocky

Lm - cream, fn-medxln, brittle, slightly oolitic, poor development, no shows, chalky, cherty

Lm - cream, subgranular, friable, bedded chalk

Lm - cream, fnxln, hard, bedded chalk in part, pyrite clusters

Lm - A/A, some lithographic

Lm - cream-tan, fnxln, bedded chalk, cherty

MUNCIE CREEK SPL 3939 (-1139) ELOG 3942(-1142)

Sh - black, carbonaceous, firm, waxy, some sticky

Lm - medium gray-brown, fnxln, dense, hard, slightly fossiliferous, slight chalk, slight chert

Sh - dark gray, soft, sticky

Lm - tan, fn-medxln, slightly fossiliferous, limited developement, no shows, pyrite clusters

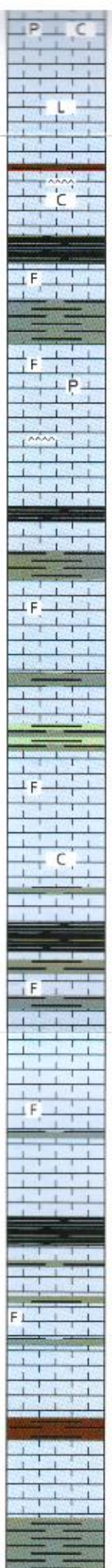
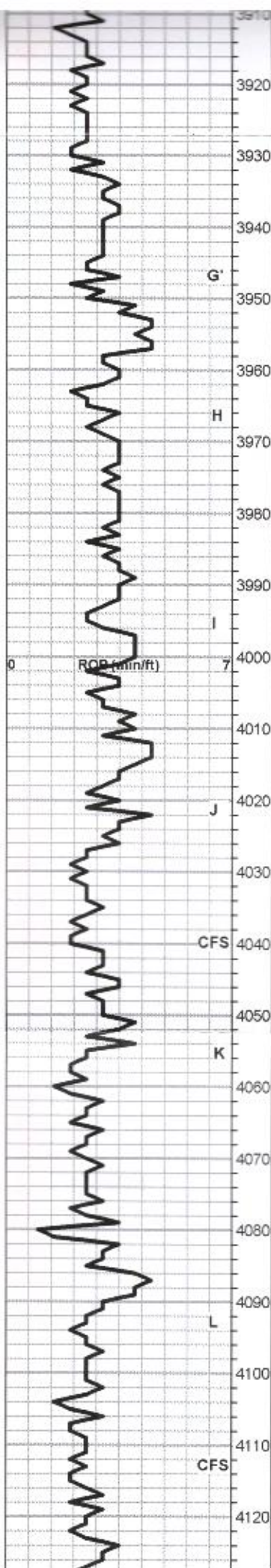
Lm - cream, fnxln, dense, hard, white chert

Sh - black, carbonaceous, fissile

Sh - dark gray, firm, blocky

○ Lm - off white, slightly fossiliferous, fn interxn porosity with scattered pinpoint porosity, limited staining, slightly vuggy, faint odor, SFO upon crush, tight overall

MUD WT. 8.9
VIS 53
LCM 3#



Lm - cream, fnxn, hard, bedded chalk in part, pyrite clusters

Lm - A/A, some lithographic

Lm - cream-tan, fnxn, bedded chalk, cherty

MUNCIE CREEK SPL 3939 (-1139) ELOG 3942(-1142)

Sh - black, carbonaceous, firm, waxy, some sticky

Lm - medium gray-brown, fnxn, dense, hard, slightly fossiliferous, slight chert

Sh - dark gray, soft, sticky

Lm - tan, fn-medxn, slightly fossiliferous, limited development, no shows, pyrite clusters

Lm - cream, fnxn, dense, hard, white chert

Sh - black, carbonaceous, fissile

Sh - dark gray, firm, blocky

O Lm - off white, slightly fossiliferous, fn interxn porosity with scattered pinpoint porosity, limited staining, slightly vuggy, faint odor, SFO upon crush, tight overall

Sh - dark green/gray, firm, blocky

O Lm - tan-cream, slightly fossiliferous, fn interxn porosity, slightly vuggy, few specks of tar like oil, faint odor

Lm - tan, fnxn, chalky

STARK SPL 4034(-1254) ELOG 4037 (-1237)

Sh - black, carbonaceous, waxy, firm

O Lm - cream, slightly fossiliferous, fn interxn porosity, light scattered stain, no odor, NSFO

O Lm - off white, fn pinpoint porosity, scattered dark stain, fair odor, NSFO

Lm - off white, slightly fossiliferous, pinpoint porosity, dark stain, faint odor, NSFO

HUSHPUCKNEY SPL 4072 (-1272) ELOG 4077 (-1277)

Sh - black, carbonaceous

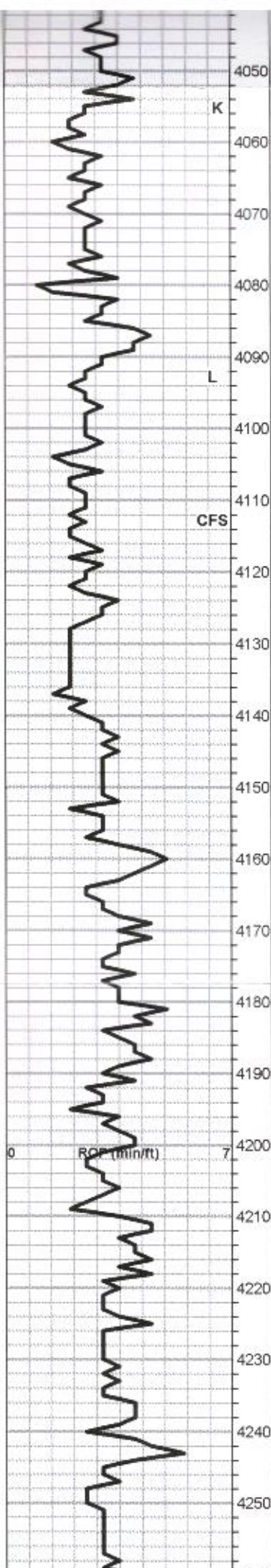
O Lm - off white, fine interxn porosity, slightly fossiliferous, interxtal staining, few specks of free oil upon crush, faint odor, limited development.

Lm - tan, fnxn, dense, brittle, no shows

BKC SPL 4102 (-1302) ELOG 4106 (-1306)

Sh - reddish brown, soft, blocky

Lm - medium gray, clastic, brittle



Lm - cream, slightly fossiliferous, fn interxn porosity, light scattered stain, no odor, NSFO

Lm - off white, fn pinpoint porosity, scattered dark stain, fair odor, NSFO

Lm - off white, slightly fossiliferous, pinpoint porosity, dark stain, faint odor, NSFO

HUSHPUCKNEY SPL 4072 (-1272) ELOG 4077 (-1277)
Sh - black, carbonaceous

Lm - off white, fine interxn porosity, slightly fossiliferous, interxtal staining, few specks of free oil upon crush, faint odor, limited development.

Lm - tan, fnxn, dense, brittle, no shows

BKC SPL 4102 (-1302) ELOG 4106 (-1306)
Sh - reddish brown, soft, blocky

Lm - medium gray, clastic, brittle

Sh - medium brown-gray, soft, blocky, some forming sticky clumps

MARMATON SPL 4139 (-1339) ELOG 4144 (-1344)

Lm - cream, granular, firm, pyrite clusters, orange chert

Sh - black carbonaceous, waxy, soft

Sh - dark brown, soft, gritty, sticky

ALTAMONT SPL 4157 (-1357) ELOG 4162 (-1362)
Lm - cream, fn-medxn, hard, brittle, clean and barren

Lm - tan-light brown, brittle

Lm - tan, vfxn, dense, brittle,
Sh - black, carbonaceous, firm

Lm - tan, scattered pinpoint porosity, slight stain, faint odor, few specks of oil, limited total porosity

Sh - medium gray-brown, soft, blocky

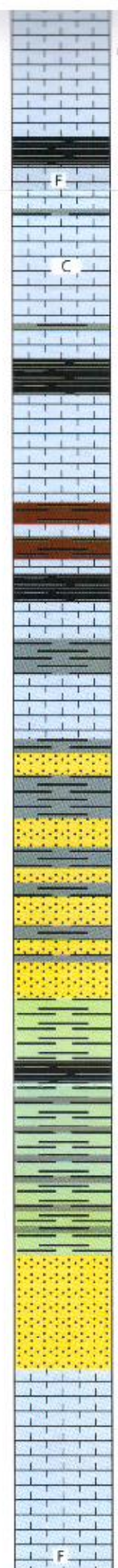
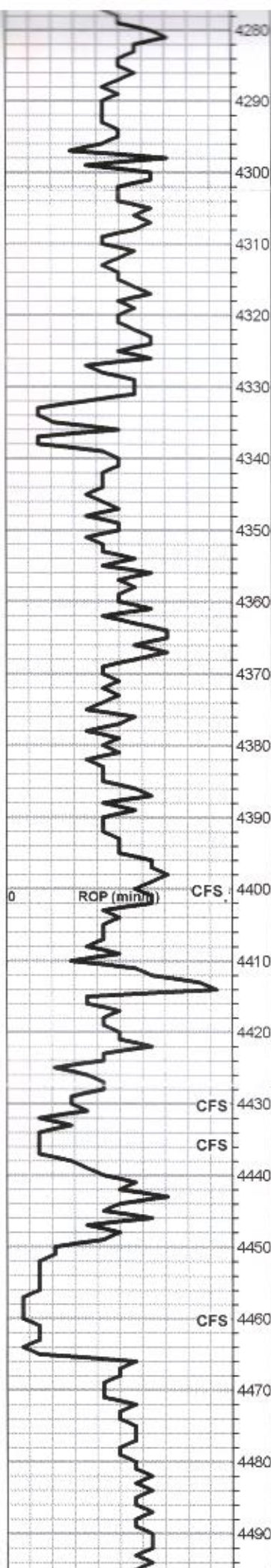
Lm - cream, vfxn, dense, brittle, few chips with oil specks, tight

Lm - cream, mostly fnxn, some fossiliferous with interparticle porosity, light brown stain, specks FO upon crush, faint odor, gray chert

PAWNEE SPL 4240 (-1440) ELOG 4244 (-1444)
Lm - cream, vfxn, dense, some oolitic, well cemented, slight stain, no odor, chalky

Lm - cream-tan, colitic, interoolitic stain, very tight, NSFO

MUD WT. 9.2
VIS 51
LCM 2#



Lm - light gray-light brown, fn-medxn, some chips with slight pinpoint porosity, light staining, no odor, NSFO

MUD WT. 9.2
VIS 56
LCM 4#

FORT SCOTT SPL 4290 (-1490) ELOG 4298 (-1498)

Lm - light brown, fnxn, slightly fossiliferous, no shows

Lm - tan, fnxn, slightly chalky, clean and barren

Lm - tan-light brown, fnxn, slightly chalky
CHEROKEE SH SPL 4315 (-1515) ELOG 4326 (-1526)

Sh - black, carbonaceous, firm

Lm - cream, fnxn, some pinpoint porosity with slight staining, NSFO, no odor

Sh - maroon, soft, blocky, some gritty

Sh - black, carbonaceous, waxy, firm

Lm - off white, fn pinpoint porosity, calcite inclusions, slight staining, no odor, NSFO

Lm - medium brown, vfxn, dense, hard, few chips with pinpoint porosity, slight scattered stain, no odor

SS - brown, well rounded, well cemented, well sorted clusters, medium grained, very hard, dark stain, no odor, NSFO

Sh - dark gray, firm, gritty

SS - white, well rounded, well sorted, well cemented, medium grained, glauconite specks, no shows

SS - snow white, A/A, very clean

Sh - dark green, gritty, firm

Sh - black, carbonaceous, gritty, firm

Sh - dark green, firm, waxy, silty

Sh - dark green-gray, soft, sticky

SS - light green, sucrosic, well sorted, well rounded, loosely cemented, fine grained, no shows

SS - opaque, fine grained, well sorted, well rounded, loosely cemented, no shows

MISSISSIPPIAN SPL 4465 (-1665) ELOG 4468 (-1668)

Lm - cream-tan, fnxn, hard, brittle, no shows

Lm - cream, clean and bright, fn-medxn, hard, no shows

Lm - cream, fnxn, slightly fossiliferous, dense, hard, brittle, no shows

MUD WT. 9.4
VIS 57
LCM 3#

SHORT TRIP 45 STANDS

STRAP 0.11 FT LONG TO

