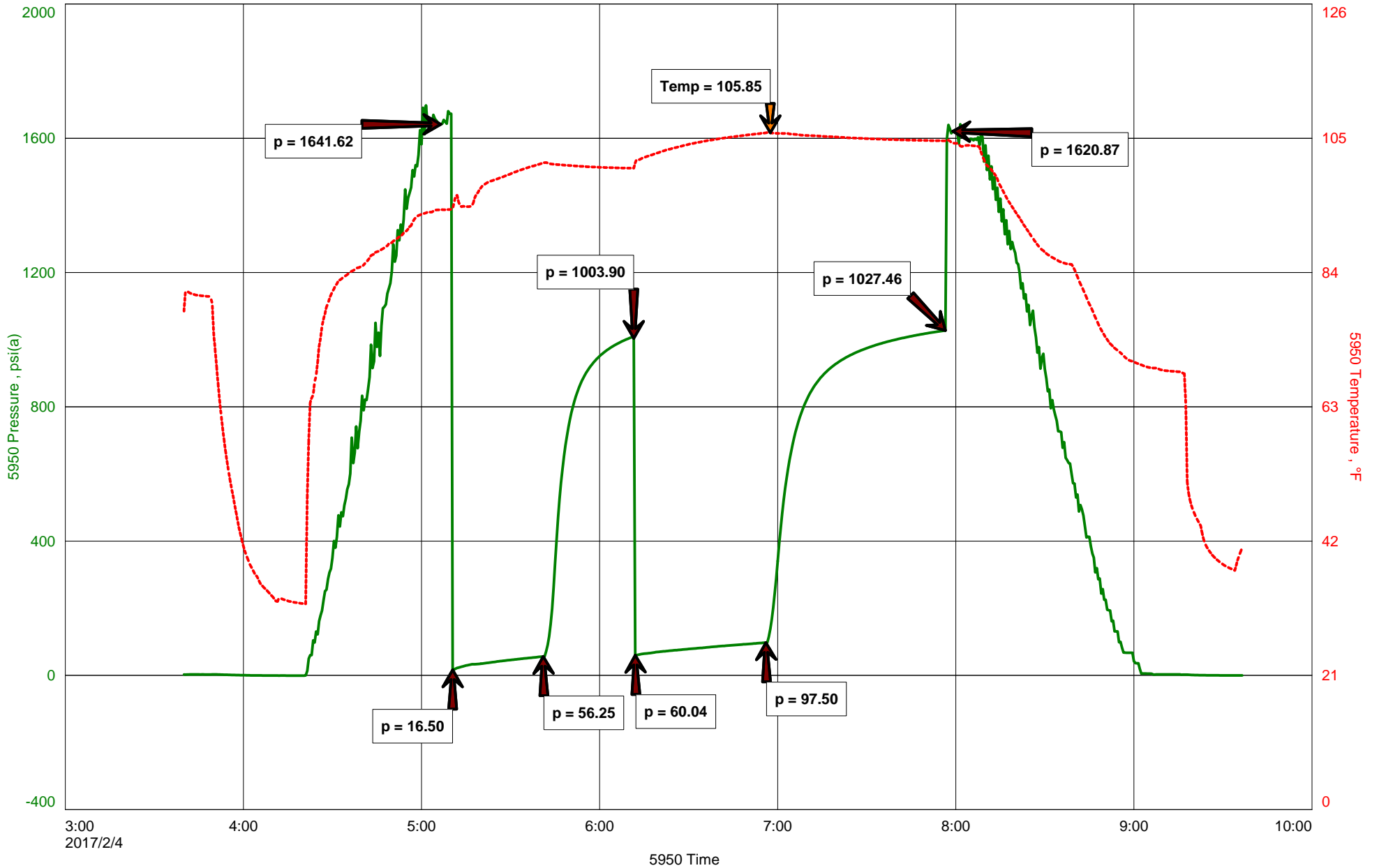


# Herrman #2





**Hoisington, Kansas**

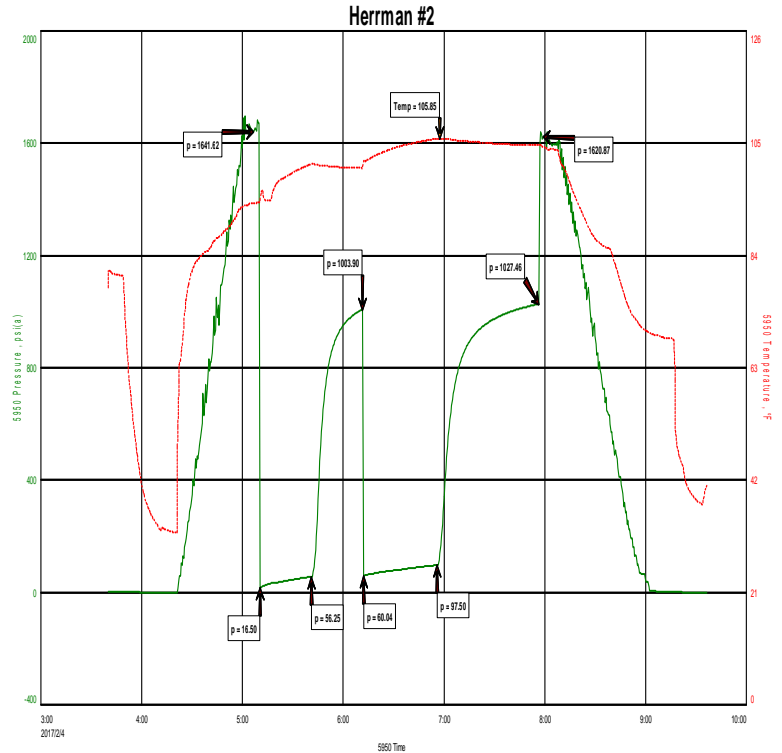
**Michael Carroll**  
**620-617-0368**  
**carroll.dtlc@gmail.com**

**General Information**

**Company Name** H&D Exploration LLC

<b>Contact</b>	Mitch Driscoll
<b>Well Name</b>	Herrman #2
<b>Unique Well ID</b>	Dst #2 Lower Lans/KC 3325-3425'
<b>Surface Location</b>	Sec 8-19s-13w Barton County
<b>Field</b>	Walnut Creek
<b>Well Type</b>	Vertical
<b>Test Type</b>	Drill Stem Test
<b>Well Operator</b>	H&D Exploration LLC

<b>Formation</b>	Dst #2 Lower Lans/KC 3325-3425'
<b>Well Fluid Type</b>	01 Oil
<b>Test Purpose</b>	Initial Test
<b>Start Test Date</b>	2017/02/04
<b>Start Test Time</b>	03:40:00
<b>Final Test Time</b>	09:35:00
<b>Job Number</b>	P0158
<b>Report Date</b>	2017/02/04
<b>Prepared By</b>	Michael Carroll



**TEST RECOVERY**

<b>Remarks</b>	<b>Recovery:</b>	<b>265'</b>	<b>Gas In Pipe</b>			
		<b>50'</b>	<b>OCWCM</b>	<b>20%O</b>	<b>25%W</b>	<b>55%M</b>
		<b>126'</b>	<b>SLOCMW</b>	<b>2%O</b>	<b>78%W</b>	<b>20%M</b>

**Total Fluid:** 176'

**Tool Sample:** 2%O 98%W

**Chlorides 70000 PPM**  
**RW .14 @ 60 Degrees**  
**PH 7**



**DIAMOND TESTING**  
P.O. Box 157  
**HOISINGTON, KANSAS 67544**  
(800) 542-7313  
**DRILL-STEM TEST TICKET**  
FILE: HERRMAN#2DST#2

TIME ON: 0340  
TIME OFF: 0935

Company H&D EXPLORATION LLC Lease & Well No. HERRMAN #2  
Contractor SOUTHWIND DRILLING RIG 3 Charge to H&D EXPLORATION LLC  
Elevation 1856 SUR Formation LOWER LANS/KC Effective Pay \_\_\_\_\_ Ft. Ticket No. P0158  
Date 2-4-17 Sec. 8 Twp. \_\_\_\_\_ 19 S Range \_\_\_\_\_ 13 W County BARTON State KANSAS  
Test Approved By JIM MUSGROVE Diamond Representative Michael Carroll

Formation Test No. 2 Interval Tested from 3325 ft. to 3425 ft. Total Depth 3425 ft.  
Packer Depth 3320 ft. Size 6 3/4 in. Packer depth \_\_\_\_\_ ft. Size 6 3/4 in.  
Packer Depth 3325 ft. Size 6 3/4 in. Packer depth \_\_\_\_\_ ft. Size 6 3/4 in.

Depth of Selective Zone Set \_\_\_\_\_

Top Recorder Depth (Inside) 3313 ft. Recorder Number 5950 Cap. 5000 P.S.I.  
Bottom Recorder Depth (Outside) 3392 ft. Recorder Number 0230 Cap. 5000 P.S.I.  
Below Straddle Recorder Depth \_\_\_\_\_ ft. Recorder Number \_\_\_\_\_ Cap. \_\_\_\_\_ P.S.I.

Mud Type Chem Viscosity 51 Drill Collar Length 0 ft. I.D. 2 1/4 in.  
Weight 9.2 Water Loss 4.8 cc. Weight Pipe Length 0 ft. I.D. 2 7/8 in.  
Chlorides 5000 P.P.M. Drill Pipe Length 3300 ft. I.D. 3 1/2 in.  
Jars: Make STERLING Serial Number NA Test Tool Length 25 ft. Tool Size 3 1/2-IF in.  
Did Well Flow? NO Reversed Out NO Anchor Length 100(38A) ft. Size 4 1/2-FH in.  
Main Hole Size 7 7/8 Tool Joint Size 4 1/2 XH in. Surface Choke Size 1 in. Bottom Choke Size 5/8 in.

Blow: 1st Open: 1/4" BLOW-BUILT TO BOB IN 19 MINUTES 30 SECONDS WSBB  
2nd Open: 1" BLOW-BUILT TO BOB IN 15 MINUTES 1/4" BB

Recovered 265 ft. of GAS IN PIPE CHLORIDES 70000 PPM  
Recovered 50 ft. of OCWCM 20%O 25%W 55%M RW .14 @ 60 DEGREES  
Recovered 126 ft. of SLOCMW 2%O 78%W 20%M PH 7  
Recovered 176 ft. of TOTAL FLUID

Recovered _____ ft. of _____	Price Job
Recovered _____ ft. of _____	Other Charges
Remarks: <u>TOOL SAMPLE:2%O 98%W</u>	Insurance
	Total

Time Set Packer(s) 5:10 A.M. A.M. P.M. Time Started Off Bottom 7:55 A.M. A.M. P.M. Maximum Temperature 106

Initial Hydrostatic Pressure..... (A) 1642 P.S.I.  
Initial Flow Period..... Minutes 30 (B) 17 P.S.I. to (C) 56 P.S.I.  
Initial Closed In Period..... Minutes 30 (D) 1004 P.S.I.  
Final Flow Period..... Minutes 45 (E) 60 P.S.I. to (F) 98 P.S.I.  
Final Closed In Period..... Minutes 60 (G) 1027 P.S.I.  
Final Hydrostatic Pressure..... (H) 1621 P.S.I.

Diamond Testing shall not be liable for damages of any kind to the property or personnel of the one for whom a test is made or for any loss suffered or sustained, directly or indirectly, through the use of its equipment, or its statement or opinion concerning the result of any test. Tools lost or damaged in the hole shall be paid for at cost by the party for whom the test is made.