

Scale 1:240 Imperial

Well Name: Fischer 34 W Unit  
Location: N2 NW NW SW Sec.34-T5S-R37W  
Surface Location: (Same)  
Bottom Location: (Same)  
API: 15-023-21462  
License Number: 320203-1  
Spud Date: 4/5/2017  
Region: Cheyenne County  
Completed: 4/5/2017  
Time: 7:00 AM  
Drilling Interval: 350.00ft  
Surface Coordinates: 2425' FSL & 330' FWL  
Bottom Hole Coordinates: (Same) & (Same)  
Ground Elevation: 3319.00ft  
K.B. Elevation: 330.00ft  
Ground Interval: 350.00ft  
Total Depth: 4806.00ft  
Formation: Wildcat  
Drilling Fluid Type: Chemical/Fresh Water Gel

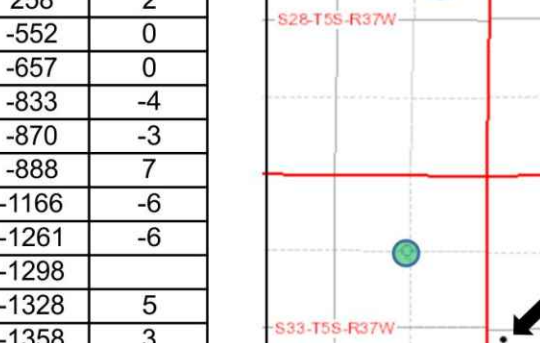
OPERATOR

Company: Bickie Energies, LLC.  
Address: P.O. Box 816  
Hays, Kansas 67601  
Contact Geologist: Garet Dinkel  
Contact Well Nbr: Fischer 34 W Unit  
Location: N2 NW NW SW Sec.34-T5S-R37W  
API: 15-023-21462  
Pool: Wildcat  
State: Kansas  
Field: Wildcat  
Country: USA

SURFACE CO-ORDINATES

Well Type: Vertical  
Longitude: -101.4684905  
Latitude: 39.5750014  
N/S Co-Ord: 2425' FSL  
E/W Co-Ord: 330' FWL

LOGGED BY



Company: Jet Exploration, LLC.  
Address: 640 S Lightner Drive  
Wichita, KS 67218  
Phone Nbr: 785-623-1009  
Logged By: Geologist  
Name: Garet Dinkel

CONTRACTOR

Contractor: L.D. Drilling, Inc.  
Rig #: m  
Rig Type: mud rotary  
Spud Date: 3/20/2017  
TD Date: 4/5/2017  
Rig Release: 4/5/2017  
Time: 7:00 AM  
Time: 5:00 PM  
Time: 8:00 PM

ELEVATIONS

K.B. Elevation: 3307.00ft  
K.B. to Ground: 8.00ft  
Ground Elevation: 3319.00ft

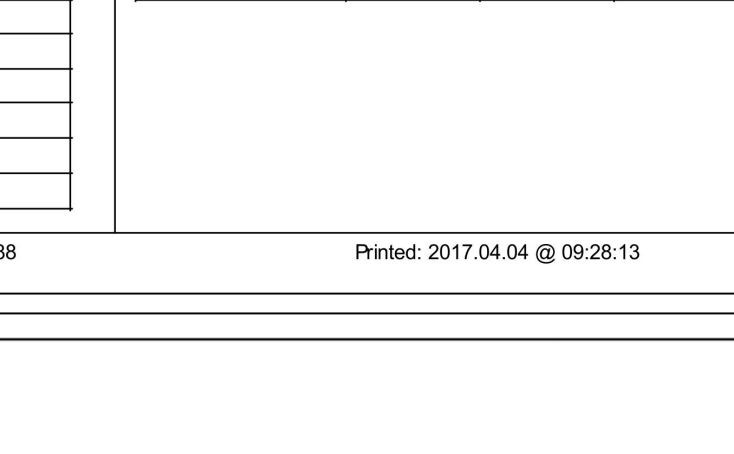
NOTES

Due to the negative results of DST #1 the lack of additional significant shows, and potential loss circulation encountered after resuming drilling due to weather delays. It was decided by all parties to plug and abandon the Fischer 34W Unit-1.

Respectively submitted  
Garet Dinkel

Operator: Bickie Energies, LLC. Well Name: Fischer 34 W Unit #1 API Number: 15-023-21462 Location: N2-NW-NW Sec.34 T5S-R37W County: Cheyenne State: Kansas Elevation: 3319 GL -3324 KB. Includes Jet Exploration LLC logo and Garet Dinkel Consulting Petroleum Geologist info.

Sample Tops table with columns: Formation, Depth, Datum. Rows include Anhydrite Top, Anhydrite Base, Topoka, Heebner, Toronto, Lansing, BKC, Upper Pawnee, Lower Pawnee, Ft. Scott, Cherokee Sand, Cherokee Shale, Mississippian, RTD, LTD.



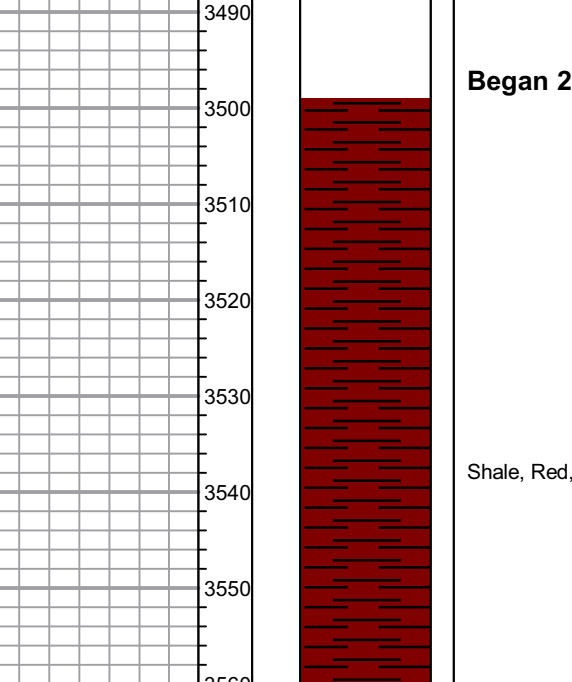
Reference well log tops table comparing Fischer 34W Unit #1 with other wells: Beaver Creek #351, Junior Magma 101, Lettner-1, and Fischer #C1#1. Columns include Formation, Elevation, Datum, and various well identifiers.

DRILL STEM TEST REPORT header. Includes TriLOBITE TESTING, INC. logo, well name (Fischer 34 W Unit #1), location (Wichita, Kansas), and test start time (2017.03.27 @ 14:07.00).

GENERAL INFORMATION: Formation: Pawnee, Deviation: No Whipstock, Time Tool Opened: 17:02:30, Interval: 4533.00 ft (KB) To 4605.00 ft (KB) (TVD), Total Depth: 4605.00 ft (KB) (TVD), Hole Diameter: 7.88 inches, Condition: Fair.

Serial #: 8734, Press @ Rm Depth: 26.80 psig @ 20.00, Start Time: 14:07:01, End Date: 2017.03.27, End Time: 21:14:30, Capacity: 8000.00 psig, Last Callb.: 2017.03.27 @ 16:55:30, Time On Btm: 2017.03.27 @ 16:55:30, Time Off Btm: 2017.03.27 @ 18:57:30.

TEST COMMENT: 15' - F: Surface blow built to 34", 60' - S: No blow, 15' - F: No blow, 30' - FS: No blow.



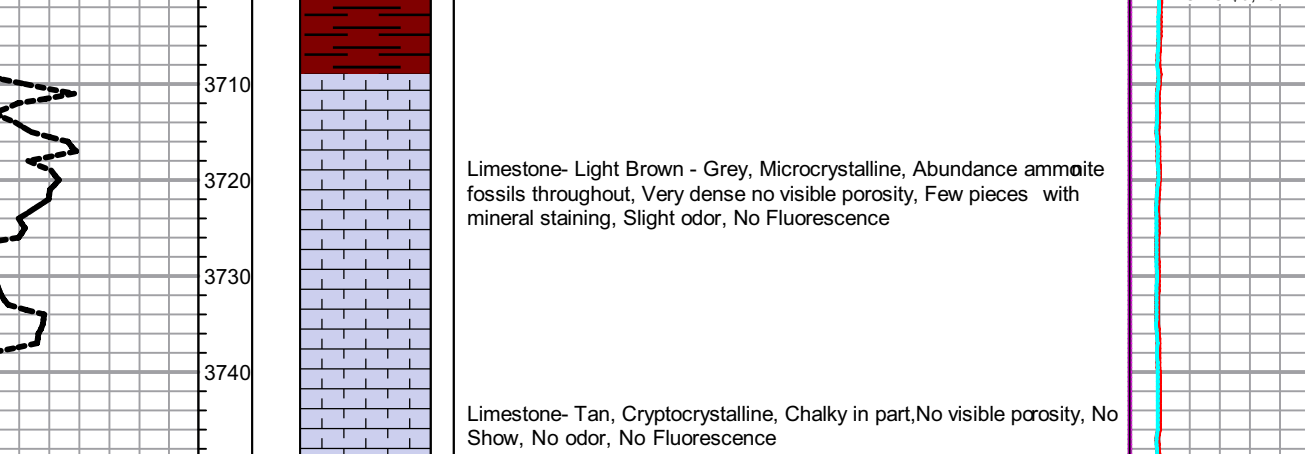
Pressure Summary table with columns: Time (Min), Pressure (psig), Temp (deg F), Annotation. Rows include initial hydro-static, open to flow, and end shut-in points.

Recovery table with columns: Length (ft), Volume (bbl). Shows WCM 30% W.70% Mud, Volume 0.28.

Gas Rates table with columns: Choke (inches), Pressure (psig), Gas Rate (Mcfd). Shows Choke 2.00, Pressure 122, Gas Rate 0.00.

ROCK TYPES: shale, gm; shale, gry; shale, red; shale, red. Includes color-coded boxes for each type.

ACCESSORIES: MINERAL (Pyrite, Glauconite, Chert White), TEXTURE (Sandstone, green shale, red shale, Chalky), OTHER SYMBOLS (DST Int, DST att, tail pipe).



Displace @ 3382. Geologist on location 3/24/17 1:00A.M.

Began 20' samples. Shale, Red. Silty to very fine sand. Silstone-Green, Glauconitic. Shale-Green, Waxy.

Shale, Red, Silty to very fine sand. Silstone-Cream-grey, Dense. Shale-Green, Waxy, Glauconitic. Silstone-Brown, Quartz Grains.

Limestone-Cream, Microcrystalline, Very sandy, No visible porosity. No show, No odor, No Fluorescence. Shale-Red, Silty, Few pieces with large calcite crystals.

Limestone-Light Brown - Grey, Microcrystalline, Abundance ammolite fossil throughout, Very dense, no visible porosity. Few pieces with mineral staining, Slight odor. No show, No odor, No Fluorescence.

Limestone-Tan, Cryptocrystalline, Chalky in part, No visible porosity. No show, No odor, No Fluorescence. Shale-Black, Calcareous with fossiliferous inclusions-brachiopods, crinoids.

Shale-Red and brown, silty. Limestone-Cream, Cryptocrystalline, Heavy sparite oolitic text, no visible porosity. No show, No odor, No Fluorescence.

Switched to 10' samples. Shale-Grey and brown, Silty Waxy. Limestone-Light grey, Cryptocrystalline, Few pieces mottled with black ferrite matrix. No show, No odor, No Fluorescence.

Limestone-Cream, Microcrystalline, Very sandy, No visible porosity. No show, No odor, No Fluorescence. Shale-Red, Globular (BAD SAMPLE). Limestone-Grey, Microcrystalline, Sandy, No visible porosity. No show, No odor, No Fluorescence.

Shale-Grey, Silty, Few waxy, Carbonaceous, small pyrite flecks. Sh. Light Tan, Silty. Limestone-Grey, Microcrystalline, Mottled with cream inclusions, Very dense with sil intercrystalline porosity. No show, No odor, No Fluorescence.

Limestone-Grey, Microcrystalline, Ammonite, Fossiliferous, Very dense intercrystalline porosity, Slight diesel odor, Very slight odor, No show, No odor, No Fluorescence. Limestone-Grey, Microcrystalline, Very dense, intercrystalline to pinpoint porosity, few (5 pieces) slight show of free oil, waxy/ rest dead stain or flakes, Slight odor, No Fluorescence or Cut.

Limestone-Cream, Microcrystalline, Fossiliferous, puffed and ooids, No visible porosity. No show, No odor. Limestone-Cream Microcrystalline, Soft, Chalky, No visible porosity. No show, No odor.

Limestone-Light brown, Cryptocrystalline, Earthy, No visible porosity. No show, No odor. Limestone-Cream, Microcrystalline, Red Lithic Stringers, Very dense, No visible porosity. No show, No odor, No Fluorescence.

Limestone-Cream, Cryptocrystalline, Chalky, Recrystallized sparite, Dense, No visible porosity. No show, No odor. Limestone-Cream, Microcrystalline, Chalky in part, Some recrystallized sparite, Few with pinpoint porosity. No show, No odor, No Fluorescence.

Limestone-Cream, Microcrystalline, Very Dense, No visible porosity. No show, No odor, No Fluorescence. Shale-Red, Globular (BAD SAMPLE). Limestone-Grey, Microcrystalline, Sandy, No visible porosity. No show, No odor, No Fluorescence.

Shale-Grey, Silty, Few waxy, Carbonaceous, small pyrite flecks. Sh. Light Tan, Silty. Limestone-Grey, Microcrystalline, Mottled with cream inclusions, Very dense with sil intercrystalline porosity. No show, No odor, No Fluorescence.

Limestone-Grey, Microcrystalline, Ammonite, Fossiliferous, Very dense intercrystalline to pinpoint porosity, Slight diesel odor, Very slight odor, No show, No odor, No Fluorescence. Limestone-Grey, Microcrystalline, Very dense, intercrystalline to pinpoint porosity, few (5 pieces) slight show of free oil, waxy/ rest dead stain or flakes, Slight odor, No Fluorescence or Cut.

Limestone-Cream, Microcrystalline, Fossiliferous, puffed and ooids, No visible porosity. No show, No odor. Limestone-Cream Microcrystalline, Soft, Chalky, No visible porosity. No show, No odor.

Limestone-Light brown, Cryptocrystalline, Earthy, No visible porosity. No show, No odor. Limestone-Cream, Microcrystalline, Red Lithic Stringers, Very dense, No visible porosity. No show, No odor, No Fluorescence.

Limestone-Cream, Cryptocrystalline, Chalky, Recrystallized sparite, Dense, No visible porosity. No show, No odor. Limestone-Cream, Microcrystalline, Chalky in part, Some recrystallized sparite, Few with pinpoint porosity. No show, No odor, No Fluorescence.

Limestone-Cream, Microcrystalline, Very Dense, No visible porosity. No show, No odor, No Fluorescence. Shale-Red, Globular (BAD SAMPLE). Limestone-Grey, Microcrystalline, Sandy, No visible porosity. No show, No odor, No Fluorescence.

Shale-Grey, Silty, Few waxy, Carbonaceous, small pyrite flecks. Sh. Light Tan, Silty. Limestone-Grey, Microcrystalline, Mottled with cream inclusions, Very dense with sil intercrystalline porosity. No show, No odor, No Fluorescence.

Limestone-Grey, Microcrystalline, Ammonite, Fossiliferous, Very dense intercrystalline to pinpoint porosity, Slight diesel odor, Very slight odor, No show, No odor, No Fluorescence. Limestone-Grey, Microcrystalline, Very dense, intercrystalline to pinpoint porosity, few (5 pieces) slight show of free oil, waxy/ rest dead stain or flakes, Slight odor, No Fluorescence or Cut.

Limestone-Cream, Microcrystalline, Fossiliferous, puffed and ooids, No visible porosity. No show, No odor. Limestone-Cream Microcrystalline, Soft, Chalky, No visible porosity. No show, No odor.

Limestone-Light brown, Cryptocrystalline, Earthy, No visible porosity. No show, No odor. Limestone-Cream, Microcrystalline, Red Lithic Stringers, Very dense, No visible porosity. No show, No odor, No Fluorescence.

Limestone-Cream, Cryptocrystalline, Chalky, Recrystallized sparite, Dense, No visible porosity. No show, No odor. Limestone-Cream, Microcrystalline, Chalky in part, Some recrystallized sparite, Few with pinpoint porosity. No show, No odor, No Fluorescence.

Limestone-Cream, Microcrystalline, Very Dense, No visible porosity. No show, No odor, No Fluorescence. Shale-Red, Globular (BAD SAMPLE). Limestone-Grey, Microcrystalline, Sandy, No visible porosity. No show, No odor, No Fluorescence.

Shale-Grey, Silty, Few waxy, Carbonaceous, small pyrite flecks. Sh. Light Tan, Silty. Limestone-Grey, Microcrystalline, Mottled with cream inclusions, Very dense with sil intercrystalline porosity. No show, No odor, No Fluorescence.

Limestone-Grey, Microcrystalline, Ammonite, Fossiliferous, Very dense intercrystalline to pinpoint porosity, Slight diesel odor, Very slight odor, No show, No odor, No Fluorescence. Limestone-Grey, Microcrystalline, Very dense, intercrystalline to pinpoint porosity, few (5 pieces) slight show of free oil, waxy/ rest dead stain or flakes, Slight odor, No Fluorescence or Cut.

Limestone-Cream, Microcrystalline, Fossiliferous, puffed and ooids, No visible porosity. No show, No odor. Limestone-Cream Microcrystalline, Soft, Chalky, No visible porosity. No show, No odor.

Limestone-Light brown, Cryptocrystalline, Earthy, No visible porosity. No show, No odor. Limestone-Cream, Microcrystalline, Red Lithic Stringers, Very dense, No visible porosity. No show, No odor, No Fluorescence.

Limestone-Cream, Cryptocrystalline, Chalky, Recrystallized sparite, Dense, No visible porosity. No show, No odor. Limestone-Cream, Microcrystalline, Chalky in part, Some recrystallized sparite, Few with pinpoint porosity. No show, No odor, No Fluorescence.

Limestone-Cream, Microcrystalline, Very Dense, No visible porosity. No show, No odor, No Fluorescence. Shale-Red, Globular (BAD SAMPLE). Limestone-Grey, Microcrystalline, Sandy, No visible porosity. No show, No odor, No Fluorescence.

Shale-Grey, Silty, Few waxy, Carbonaceous, small pyrite flecks. Sh. Light Tan, Silty. Limestone-Grey, Microcrystalline, Mottled with cream inclusions, Very dense with sil intercrystalline porosity. No show, No odor, No Fluorescence.

Limestone-Grey, Microcrystalline, Ammonite, Fossiliferous, Very dense intercrystalline to pinpoint porosity, Slight diesel odor, Very slight odor, No show, No odor, No Fluorescence. Limestone-Grey, Microcrystalline, Very dense, intercrystalline to pinpoint porosity, few (5 pieces) slight show of free oil, waxy/ rest dead stain or flakes, Slight odor, No Fluorescence or Cut.

Limestone-Cream, Microcrystalline, Fossiliferous, puffed and ooids, No visible porosity. No show, No odor. Limestone-Cream Microcrystalline, Soft, Chalky, No visible porosity. No show, No odor.

Limestone-Light brown, Cryptocrystalline, Earthy, No visible porosity. No show, No odor. Limestone-Cream, Microcrystalline, Red Lithic Stringers, Very dense, No visible porosity. No show, No odor, No Fluorescence.

Limestone-Cream, Cryptocrystalline, Chalky, Recrystallized sparite, Dense, No visible porosity. No show, No odor. Limestone-Cream, Microcrystalline, Chalky in part, Some recrystallized sparite, Few with pinpoint porosity. No show, No odor, No Fluorescence.

Limestone-Cream, Microcrystalline, Very Dense, No visible porosity. No show, No odor, No Fluorescence. Shale-Red, Globular (BAD SAMPLE). Limestone-Grey, Microcrystalline, Sandy, No visible porosity. No show, No odor, No Fluorescence.

Shale-Grey, Silty, Few waxy, Carbonaceous, small pyrite flecks. Sh. Light Tan, Silty. Limestone-Grey, Microcrystalline, Mottled with cream inclusions, Very dense with sil intercrystalline porosity. No show, No odor, No Fluorescence.

Limestone-Grey, Microcrystalline, Ammonite, Fossiliferous, Very dense intercrystalline to pinpoint porosity, Slight diesel odor, Very slight odor, No show, No odor, No Fluorescence. Limestone-Grey, Microcrystalline, Very dense, intercrystalline to pinpoint porosity, few (5 pieces) slight show of free oil, waxy/ rest dead stain or flakes, Slight odor, No Fluorescence or Cut.

Limestone-Cream, Microcrystalline, Fossiliferous, puffed and ooids, No visible porosity. No show, No odor. Limestone-Cream Microcrystalline, Soft, Chalky, No visible porosity. No show, No odor.

Limestone-Light brown, Cryptocrystalline, Earthy, No visible porosity. No show, No odor. Limestone-Cream, Microcrystalline, Red Lithic Stringers, Very dense, No visible porosity. No show, No odor, No Fluorescence.

Limestone-Cream, Cryptocrystalline, Chalky, Recrystallized sparite, Dense, No visible porosity. No show, No odor. Limestone-Cream, Microcrystalline, Chalky in part, Some recrystallized sparite, Few with pinpoint porosity. No show, No odor, No Fluorescence.

Limestone-Cream, Microcrystalline, Very Dense, No visible porosity. No show, No odor, No Fluorescence. Shale-Red, Globular (BAD SAMPLE). Limestone-Grey, Microcrystalline, Sandy, No visible porosity. No show, No odor, No Fluorescence.

Shale-Grey, Silty, Few waxy, Carbonaceous, small pyrite flecks. Sh. Light Tan, Silty. Limestone-Grey, Microcrystalline, Mottled with cream inclusions, Very dense with sil intercrystalline porosity. No show, No odor, No Fluorescence.

Limestone-Grey, Microcrystalline, Ammonite, Fossiliferous, Very dense intercrystalline to pinpoint porosity, Slight diesel odor, Very slight odor, No show, No odor, No Fluorescence. Limestone-Grey, Microcrystalline, Very dense, intercrystalline to pinpoint porosity, few (5 pieces) slight show of free oil, waxy/ rest dead stain or flakes, Slight odor, No Fluorescence or Cut.

Limestone-Cream, Microcrystalline, Fossiliferous, puffed and ooids, No visible porosity. No show, No odor. Limestone-Cream Microcrystalline, Soft, Chalky, No visible porosity. No show, No odor.

Limestone-Light brown, Cryptocrystalline, Earthy, No visible porosity. No show, No odor. Limestone-Cream, Microcrystalline, Red Lithic Stringers, Very dense, No visible porosity. No show, No odor, No Fluorescence.

Limestone-Cream, Cryptocrystalline, Chalky, Recrystallized sparite, Dense, No visible porosity. No show, No odor. Limestone-Cream, Microcrystalline, Chalky in part, Some recrystallized sparite, Few with pinpoint porosity. No show, No odor, No Fluorescence.

Limestone-Cream, Microcrystalline, Very Dense, No visible porosity. No show, No odor, No Fluorescence. Shale-Red, Globular (BAD SAMPLE). Limestone-Grey, Microcrystalline, Sandy, No visible porosity. No show, No odor, No Fluorescence.

Shale-Grey, Silty, Few waxy, Carbonaceous, small pyrite flecks. Sh. Light Tan, Silty. Limestone-Grey, Microcrystalline, Mottled with cream inclusions, Very dense with sil intercrystalline porosity. No show, No odor, No Fluorescence.

Limestone-Grey, Microcrystalline, Ammonite, Fossiliferous, Very dense intercrystalline to pinpoint porosity, Slight diesel odor, Very slight odor, No show, No odor, No Fluorescence. Limestone-Grey, Microcrystalline, Very dense, intercrystalline to pinpoint porosity, few (5 pieces) slight show of free oil, waxy/ rest dead stain or flakes, Slight odor, No Fluorescence or Cut.

Limestone-Cream, Microcrystalline, Fossiliferous, puffed and ooids, No visible porosity. No show, No odor. Limestone-Cream Microcrystalline, Soft, Chalky, No visible porosity. No show, No odor.

Limestone-Light brown, Cryptocrystalline, Earthy, No visible porosity. No show, No odor. Limestone-Cream, Microcrystalline, Red Lithic Stringers, Very dense, No visible porosity. No show, No odor, No Fluorescence.

Limestone-Cream, Cryptocrystalline, Chalky, Recrystallized sparite, Dense, No visible porosity. No show, No odor. Limestone-Cream, Microcrystalline, Chalky in part, Some recrystallized sparite, Few with pinpoint porosity. No show, No odor, No Fluorescence.

Limestone-Cream, Microcrystalline, Very Dense, No visible porosity. No show, No odor, No Fluorescence. Shale-Red, Globular (BAD SAMPLE). Limestone-Grey, Microcrystalline, Sandy, No visible porosity. No show, No odor, No Fluorescence.

Shale-Grey, Silty, Few waxy, Carbonaceous, small pyrite flecks. Sh. Light Tan, Silty. Limestone-Grey, Microcrystalline, Mottled with cream inclusions, Very dense with sil intercrystalline porosity. No show, No odor, No Fluorescence.

Limestone-Grey, Microcrystalline, Ammonite, Fossiliferous, Very dense intercrystalline to pinpoint porosity, Slight diesel odor, Very slight odor, No show, No odor, No Fluorescence. Limestone-Grey, Microcrystalline, Very dense, intercrystalline to pinpoint porosity, few (5 pieces) slight show of free oil, waxy/ rest dead stain or flakes, Slight odor, No Fluorescence or Cut.

Limestone-Cream, Microcrystalline, Fossiliferous, puffed and ooids, No visible porosity. No show, No odor. Limestone-Cream Microcrystalline, Soft, Chalky, No visible porosity. No show, No odor.

Limestone-Light brown, Cryptocrystalline, Earthy, No visible porosity. No show, No odor. Limestone-Cream, Microcrystalline, Red Lithic Stringers, Very dense, No visible porosity. No show, No odor, No Fluorescence.

Limestone-Cream, Cryptocrystalline, Chalky, Recrystallized sparite, Dense, No visible porosity. No show, No odor. Limestone-Cream, Microcrystalline, Chalky in part, Some recrystallized sparite, Few with pinpoint porosity. No show, No odor, No Fluorescence.

Limestone-Cream, Microcrystalline, Very Dense, No visible porosity. No show, No odor, No Fluorescence. Shale-Red, Globular (BAD SAMPLE). Limestone-Grey, Microcrystalline, Sandy, No visible porosity. No show, No odor, No Fluorescence.

Shale-Grey, Silty, Few waxy, Carbonaceous, small pyrite flecks. Sh. Light Tan, Silty. Limestone-Grey, Microcrystalline, Mottled with cream inclusions, Very dense with sil intercrystalline porosity. No show, No odor, No Fluorescence.

Limestone-Grey, Microcrystalline, Ammonite, Fossiliferous, Very dense intercrystalline to pinpoint porosity, Slight diesel odor, Very slight odor, No show, No odor, No Fluorescence. Limestone-Grey, Microcrystalline, Very dense, intercrystalline to pinpoint porosity, few (5 pieces) slight show of free oil, waxy/ rest dead stain or flakes, Slight odor, No Fluorescence or Cut.

Limestone-Cream, Microcrystalline, Fossiliferous, puffed and ooids, No visible porosity. No show, No odor. Limestone-Cream Microcrystalline, Soft, Chalky, No visible porosity. No show, No odor.

Limestone-Light brown, Cryptocrystalline, Earthy, No visible porosity. No show, No odor. Limestone-Cream, Microcrystalline, Red Lithic Stringers, Very dense, No visible porosity. No show, No odor, No Fluorescence.

Limestone-Cream, Cryptocrystalline, Chalky, Recrystallized sparite, Dense, No visible porosity. No show, No odor. Limestone-Cream, Microcrystalline, Chalky in part, Some recrystallized sparite, Few with pinpoint porosity. No show, No odor, No Fluorescence.

Limestone-Cream, Microcrystalline, Very Dense, No visible porosity. No show, No odor, No Fluorescence. Shale-Red, Globular (BAD SAMPLE). Limestone-Grey, Microcrystalline, Sandy, No visible porosity. No show, No odor, No Fluorescence.

Shale-Grey, Silty, Few waxy, Carbonaceous, small pyrite flecks. Sh. Light Tan, Silty. Limestone-Grey, Microcrystalline, Mottled with cream inclusions, Very dense with sil intercrystalline porosity. No show, No odor, No Fluorescence.

Limestone-Grey, Microcrystalline, Ammonite, Fossiliferous, Very dense intercrystalline to pinpoint porosity, Slight diesel odor, Very slight odor, No show, No odor, No Fluorescence. Limestone-Grey, Microcrystalline, Very dense, intercrystalline to pinpoint porosity, few (5 pieces) slight show of free oil, waxy/ rest dead stain or flakes, Slight odor, No Fluorescence or Cut.

Limestone-Cream, Microcrystalline, Fossiliferous, puffed and ooids, No visible porosity. No show, No odor. Limestone-Cream Microcrystalline, Soft, Chalky, No visible porosity. No show, No odor.

Limestone-Light brown, Cryptocrystalline, Earthy, No visible porosity. No show, No odor. Limestone-Cream, Microcrystalline, Red Lithic Stringers, Very dense, No visible porosity. No show, No odor, No Fluorescence.

Limestone-Cream, Cryptocrystalline, Chalky, Recrystallized sparite, Dense, No visible porosity. No show, No odor. Limestone-Cream, Microcrystalline, Chalky in part, Some recrystallized sparite, Few with pinpoint porosity. No show, No odor, No Fluorescence.

Limestone-Cream, Microcrystalline, Very Dense, No visible porosity. No show, No odor, No Fluorescence. Shale-Red, Globular (BAD SAMPLE). Limestone-Grey, Microcrystalline, Sandy, No visible porosity. No show, No odor, No Fluorescence.

Shale-Grey, Silty, Few waxy, Carbonaceous, small pyrite flecks. Sh. Light Tan, Silty. Limestone-Grey, Microcrystalline, Mottled with cream inclusions, Very dense with sil intercrystalline porosity. No show, No odor, No Fluorescence.

Limestone-Grey, Microcrystalline, Ammonite, Fossiliferous, Very dense intercrystalline to pinpoint porosity, Slight diesel odor, Very slight odor, No show, No odor, No Fluorescence. Limestone-Grey, Microcrystalline, Very dense, intercrystalline to pinpoint porosity, few (5 pieces) slight show of free oil, waxy/ rest dead stain or flakes, Slight odor, No Fluorescence or Cut.

Limestone-Cream, Microcrystalline, Fossiliferous, puffed and ooids, No visible porosity. No show, No odor. Limestone-Cream Microcrystalline, Soft, Chalky, No visible porosity. No show, No odor.

Limestone-Light brown, Cryptocrystalline, Earthy, No visible porosity. No show, No odor. Limestone-Cream, Microcrystalline, Red Lithic Stringers, Very dense, No visible porosity. No show, No odor, No Fluorescence.

Limestone-Cream, Cryptocrystalline, Chalky, Recrystallized sparite, Dense, No visible porosity. No show, No odor. Limestone-Cream, Microcrystalline, Chalky in part, Some recrystallized sparite, Few with pinpoint porosity. No show, No odor, No Fluorescence.

Limestone-Cream, Microcrystalline, Very Dense, No visible porosity. No show, No odor, No Fluorescence. Shale-Red, Globular (BAD SAMPLE). Limestone-Grey, Microcrystalline, Sandy, No visible porosity. No show, No odor, No Fluorescence.

Shale-Grey, Silty, Few waxy, Carbonaceous, small pyrite flecks. Sh. Light Tan, Silty. Limestone-Grey, Microcrystalline, Mottled with cream inclusions, Very dense with sil intercrystalline porosity. No show, No odor, No Fluorescence.

Limestone-Grey, Microcrystalline, Ammonite, Fossiliferous, Very dense intercrystalline to pinpoint porosity, Slight diesel odor, Very slight odor, No show, No odor, No Fluorescence. Limestone-Grey, Microcrystalline, Very dense, intercrystalline to pinpoint porosity, few (5 pieces) slight show of free oil, waxy/ rest dead stain or flakes, Slight odor, No Fluorescence or Cut.

Limestone-Cream, Microcrystalline, Fossiliferous, puffed and ooids, No visible porosity. No show, No odor. Limestone-Cream Microcrystalline, Soft, Chalky, No visible porosity. No show, No odor.

Limestone-Light brown, Cryptocrystalline, Earthy, No visible porosity. No show, No odor. Limestone-Cream, Microcrystalline, Red Lithic Stringers, Very dense, No visible porosity. No show, No odor, No Fluorescence.

Limestone-Cream, Cryptocrystalline, Chalky, Recrystallized sparite, Dense, No visible porosity. No show, No odor. Limestone-Cream, Microcrystalline, Chalky in part, Some recrystallized sparite, Few with pinpoint porosity. No show, No odor, No Fluorescence.

Limestone-Cream, Microcrystalline, Very Dense, No visible porosity. No show, No odor, No Fluorescence. Shale-Red, Globular (BAD SAMPLE). Limestone-Grey, Microcrystalline, Sandy, No visible porosity. No show, No odor, No Fluorescence.

Shale-Grey, Silty, Few waxy, Carbonaceous, small pyrite flecks. Sh. Light Tan, Silty. Limestone-Grey, Microcrystalline, Mottled with cream inclusions, Very dense with sil intercrystalline porosity. No show, No odor, No Fluorescence.

Limestone-Grey, Microcrystalline, Ammonite, Fossiliferous, Very dense intercrystalline to pinpoint porosity, Slight diesel odor, Very slight odor, No show, No odor, No Fluorescence. Limestone-Grey, Microcrystalline, Very dense, intercrystalline to pinpoint porosity, few (5 pieces) slight show of free oil, waxy/ rest dead stain or flakes, Slight odor, No Fluorescence or Cut.

Limestone-Cream, Microcrystalline, Fossiliferous, puffed and ooids, No visible porosity. No show, No odor. Limestone-Cream Microcrystalline, Soft, Chalky, No visible porosity. No show, No odor.

Limestone-Light brown, Cryptocrystalline, Earthy, No visible porosity. No show, No odor. Limestone-Cream, Microcrystalline, Red Lithic Stringers, Very dense, No visible porosity. No show, No odor, No Fluorescence.

Limestone-Cream, Cryptocrystalline,