

Saman Sharifaie

Petroleum Geologist

GEOLOGIST'S REPORT

DRILLING TIME AND SAMPLE LOG

COMPANY: **Martin Drilling Co., Inc.**
Walter "A" #1-1

FIELD: SCODA
LOCATION: 9007 FSL & 1300 FEI

SEC: 1 TWSP IS RGE 30W
COUNTY: Rawlins STATE: Kansas

CONTRACTOR: **Martin Drilling #24**
RUD: 03/07/17 COMP: 03/17/17

SPUD: 4580' TYPE MUD: Chemical
MUD UP: 3408'

SAMPLES SAVED FROM: 3680' TO RTD
DRILLING TIME KEPT FROM: 3680' TO RTD

SAMPLES EXAMINED FROM: 3680' TO RTD

GEOREGICAL SUPERVISION FROM: 3380'

REFERENCE WELL: MD/C1 - Walter "A" #1-1

ELEVATIONS
KB 3259'

DF: _____
GL: 325.4'

Measurements Are All From Kelly Bushing

CASING
CONDUCTOR: 8-5/8" at 3000'
SURFACE: 5-1/2" at 4576'

ELECTRICAL SURVEYS
CND, DIL, MEL, Somic

FORMATION

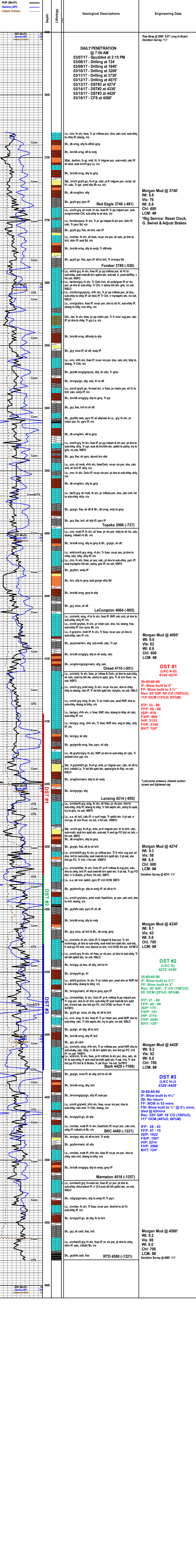
Formation	Sample Tops	E-log Tops	Strat Pos.
Ambydrite	3193 (-66)	3195 (+64)	-2
Base Ambydrite	3221 (-38)	3228 (+31)	5
Red Eagle	3734 (-475)	3740 (-481)	-9
Foraker	3784 (-525)	3789 (-530)	-9
Foraker	3926 (-735)	3906 (-737)	-10
Overled	414 (-855)	410 (-851)	-1
Lansing	4208 (-945)	4214 (-953)	-10
Stark	4426 (-1167)	4428 (-1169)	-10
Mounton City	4480 (-1219)	4480 (-1221)	-12



REMARKS Due to fair shows of oil in multiple potential pay zones and positive DST results, it is recommended and agreed upon by all parties that production casing be set to further evaluate this well.

Respectfully Submitted,
Saman Sharifaie
Petroleum Geologist

*Tops have been adjusted to electric logs



DAILY PENETRATION @ 7:00 AM
 03/07/17 - Spudded at 2:15 PM
 03/08/17 - Drilling at 724'
 03/10/17 - Drilling at 1840'
 03/11/17 - Drilling at 3730'
 03/12/17 - Drilling at 4075'
 03/13/17 - DST#3 at 4274'
 03/14/17 - DST#2 at 4330'
 03/15/17 - DST#3 at 4428'
 03/16/17 - CFS at 4580'

Morgan Mud @ 3746'
 Wt: 8.8
 Vis: 76
 WI: 6.8
 CHI: 600
 LCM: 4#
 *Rig Service: Reset Clock, G. Swivel & Adjust Brakes

Morgan Mud @ 4095'
 Wt: 9.0
 Vis: 62
 WI: 6.8
 CHI: 600
 LCM: 8#

DST #1 (LKC A-D) 4144'-4274'
 30-60-60-90
 IF: Blow built to 5"
 FF: Blow built to 3 3/4"
 Rec: 20" GIP, 40" CO (100%O), 115' OCM (15%O, 85%M)
 IFP: 33 - 60
 FFP: 66 - 86
 ISIP: 916
 FSI: 969
 IHP: 2125
 FHP: 2156
 BHT: 124°

*Lost mud pressure, cleaned suction screen and tightened cap

Morgan Mud @ 4274'
 Wt: 9.3
 Vis: 58
 WI: 6.8
 CHI: 600
 LCM: 8#
 Deviation Survey @ 4274': 1/2°

DST #2 (LKC G) 4272'-4330'
 30-60-60-90
 IF: Blow built to 3"
 FF: Blow built to 3"
 Rec: 30" GIP, 2" CO (100%O), 95' OCM (20%O, 80%M)
 IFP: 21 - 40
 ISIP: 175
 FSI: 141
 IHP: 2110
 FHP: 2040
 BHT: 120°

Morgan Mud @ 4428'
 Wt: 9.2
 Vis: 62
 WI: 6.0
 CHI: 700
 LCM: 8#

DST #3 (LKC H-J) 4328'-4428'
 30-60-60-90
 IF: Blow built to 4 1/2"
 IS: No return
 FS: Blow built to 1/2" @ 5 1/2 mins, died @ 62mins
 Rec: 220" GIP, 18" CO (100%O), 117' OCM (40%O, 60%M)
 IFP: 28 - 43
 FFP: 57 - 75
 ISIP: 1022
 FSI: 1007
 IHP: 2214
 FHP: 2066
 BHT: 124°

Morgan Mud @ 4580'
 Wt: 9.2
 Vis: 60
 WI: 6.0
 CHI: 700
 LCM: 8#
 Deviation Survey @ 4580': 1/2°