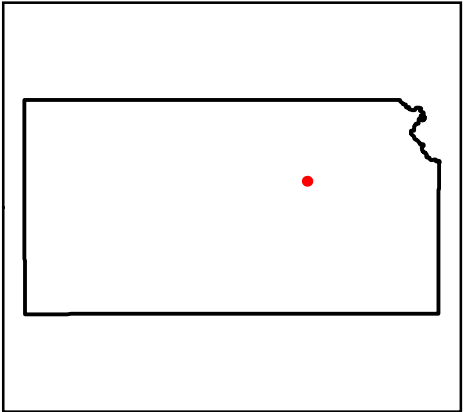
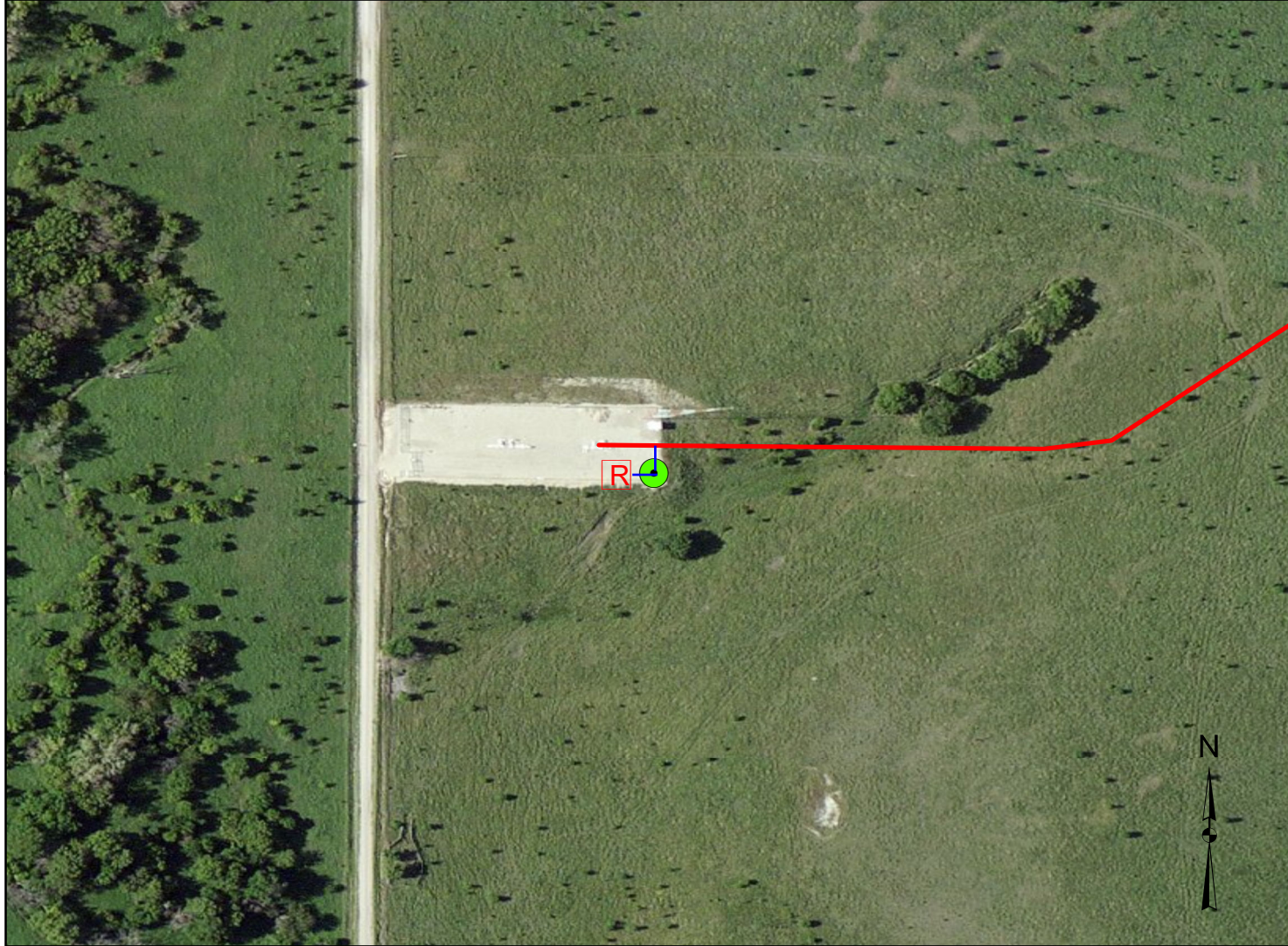




KS-KC-02 Replacement Hall

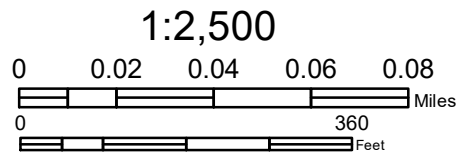


Legend

- Pipeline
- Rectifier
- Deep Well Groundbed

Groundbed Location :
2056' from S section line
257' from W section line

CHECK BY RZ
DRAWN BY TT
DATE: 6/19/2017
SCALE AS SHOWN
PRJ NO. 453167-002



Figure

1

The locations shown on the plat are preliminary non-binding estimates.

Pipeline and Groundbed are below ground features. Rectifier is an above ground feature.