



# TEMPORARY ABANDONMENT WELL APPLICATION

OPERATOR: License# \_\_\_\_\_  
 Name: \_\_\_\_\_  
 Address 1: \_\_\_\_\_  
 Address 2: \_\_\_\_\_  
 City: \_\_\_\_\_ State: \_\_\_\_\_ Zip: \_\_\_\_\_ + \_\_\_\_\_  
 Contact Person: \_\_\_\_\_  
 Phone: ( \_\_\_\_\_ ) \_\_\_\_\_  
 Contact Person Email: \_\_\_\_\_  
 Field Contact Person: \_\_\_\_\_  
 Field Contact Person Phone: ( \_\_\_\_\_ ) \_\_\_\_\_

API No. 15- \_\_\_\_\_  
 Spot Description: \_\_\_\_\_  
 \_\_\_\_\_ - \_\_\_\_\_ - \_\_\_\_\_ - \_\_\_\_\_ Sec. \_\_\_\_\_ Twp. \_\_\_\_\_ S. R. \_\_\_\_\_  E  W  
 \_\_\_\_\_ feet from  N /  S Line of Section  
 \_\_\_\_\_ feet from  E /  W Line of Section  
 GPS Location: Lat: \_\_\_\_\_, Long: \_\_\_\_\_  
(e.g. xx.xxxxx) (e.g. -xxx.xxxxx)  
 Datum:  NAD27  NAD83  WGS84  
 County: \_\_\_\_\_ Elevation: \_\_\_\_\_  GL  KB  
 Lease Name: \_\_\_\_\_ Well #: \_\_\_\_\_  
 Well Type: (check one)  Oil  Gas  OG  WSW  Other: \_\_\_\_\_  
 SWD Permit #: \_\_\_\_\_  ENHR Permit #: \_\_\_\_\_  
 Gas Storage Permit #: \_\_\_\_\_  
 Spud Date: \_\_\_\_\_ Date Shut-In: \_\_\_\_\_

	Conductor	Surface	Production	Intermediate	Liner	Tubing
Size						
Setting Depth						
Amount of Cement						
Top of Cement						
Bottom of Cement						

Casing Fluid Level from Surface: \_\_\_\_\_ How Determined? \_\_\_\_\_ Date: \_\_\_\_\_  
 Casing Squeeze(s): \_\_\_\_\_ to \_\_\_\_\_ w / \_\_\_\_\_ sacks of cement, \_\_\_\_\_ to \_\_\_\_\_ w / \_\_\_\_\_ sacks of cement. Date: \_\_\_\_\_  
(top) (bottom) (top) (bottom)  
 Do you have a valid Oil & Gas Lease?  Yes  No  
 Depth and Type:  Junk in Hole at \_\_\_\_\_  Tools in Hole at \_\_\_\_\_ Casing Leaks:  Yes  No Depth of casing leak(s): \_\_\_\_\_  
(depth) (depth)  
 Type Completion:  ALT. I  ALT. II Depth of:  DV Tool: \_\_\_\_\_ w / \_\_\_\_\_ sacks of cement  Port Collar: \_\_\_\_\_ w / \_\_\_\_\_ sack of cement  
(depth) (depth)  
 Packer Type: \_\_\_\_\_ Size: \_\_\_\_\_ Inch Set at: \_\_\_\_\_ Feet  
 Total Depth: \_\_\_\_\_ Plug Back Depth: \_\_\_\_\_ Plug Back Method: \_\_\_\_\_

**Geological Data:**

Formation Name	Formation Top	Formation Base	Completion Information
1. _____	At: _____	to _____ Feet	Perforation Interval _____ to _____ Feet or Open Hole Interval _____ to _____ Feet
2. _____	At: _____	to _____ Feet	Perforation Interval _____ to _____ Feet or Open Hole Interval _____ to _____ Feet

UNDER PENALTY OF PERJURY I HEREBY ATTEST THAT THE INFORMATION CONTAINED HEREIN IS TRUE AND CORRECT TO THE BEST OF MY KNOWLEDGE

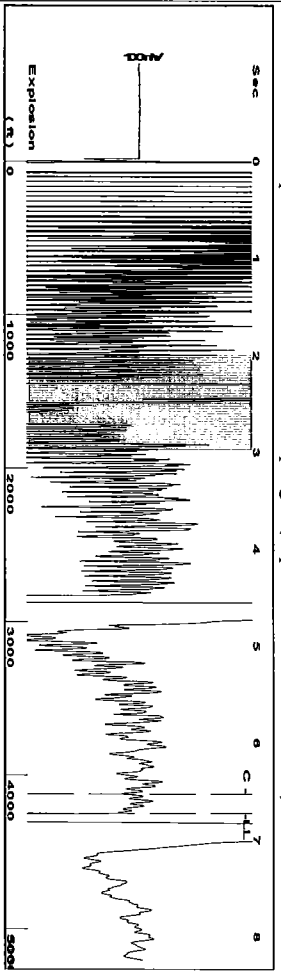
Submitted Electronically

<b>Do NOT Write in This Space - KCC USE ONLY</b>	Date Tested: _____	Results: _____	Date Plugged: _____	Date Repaired: _____	Date Put Back in Service: _____
	Review Completed by: _____ Comments: _____				
TA Approved: <input type="checkbox"/> Yes <input type="checkbox"/> Denied Date: _____					

**Mail to the Appropriate KCC Conservation Office:**

	KCC District Office #1 - 210 E. Frontview, Suite A, Dodge City, KS 67801	Phone 620.682.7933
	KCC District Office #2 - 3450 N. Rock Road, Building 600, Suite 601, Wichita, KS 67226	Phone 316.337.7400
	KCC District Office #3 - 1500 SW Seventh Steet, Chanute, KS 66720	Phone 620.432.2300
	KCC District Office #4 - 2301 E. 13th Street, Hays, KS 67601-2651	Phone 785.261.6250

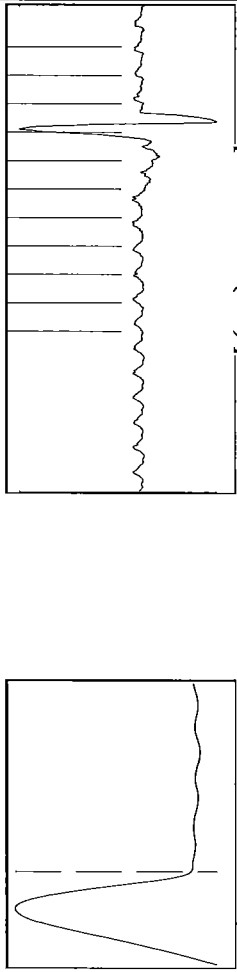
Group: Indian Oil Well: Resort 99 Springs 1 (acquired on: 05/02/17 16:30:58)



Filter Type High Pass Automatic Collar Count Yes  
 Manual Acoustic Velo 125.21 ft/s Manual JTS/sec 17.1527

Time 6.728 sec  
 Joints 129.551 Jts  
 Depth 4249.26 ft

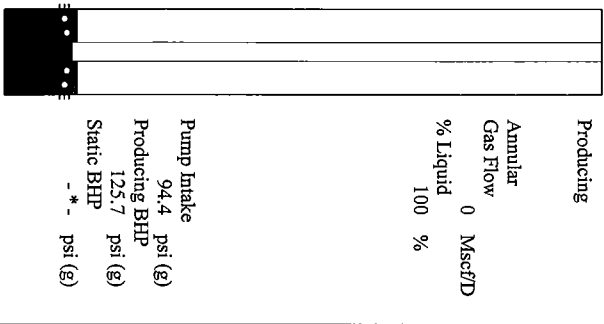
[ 2.0 to 3.0 (Sec) ]



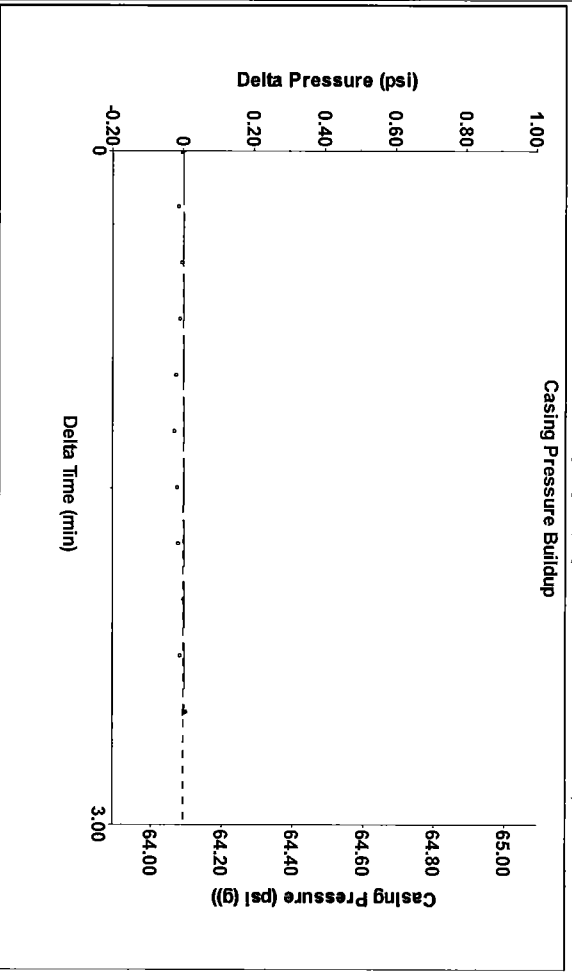
**Analysis Method: Automatic**

Group: Indian Oil Well: Resort 99 Springs 1 (acquired on: 05/02/17 16:30:58)

<b>Production</b>	<b>Potential</b>	<b>Casing Pressure</b>	<b>Producing</b>
Current Oil 2	-*- BBL/D	64.1 psi (g)	Annular Gas Flow 0 Mscf/D
Water 320	-*- BBL/D	Casing Pressure Buildup 0.004 psi	% Liquid 100 %
Gas 22.0	-*- Mscf/D	2.50 min	
IPR Method PBHP/SBHP	Vogel -*- -*-	Gas/Liquid Interface Pressure 72.8 psi (g)	
Production Efficiency 0.0			
Oil 31 deg API	Liquid Level Depth 4249.26 ft		
Water 1.05 Sp.Gr.H2O	Pump Intake Depth 4309.00 ft		
Gas 0.74 Sp.Gr.AIR	Formation Depth 4378.00 ft		
Acoustic Velocity 1263.16 ft/s			
Formation Submergence			
Total Gaseous Liquid Column HT (TVD) 60 ft			
Equivalent Gas Free Liquid HT (TVD) 60 ft			
Acoustic Test_01_050317			

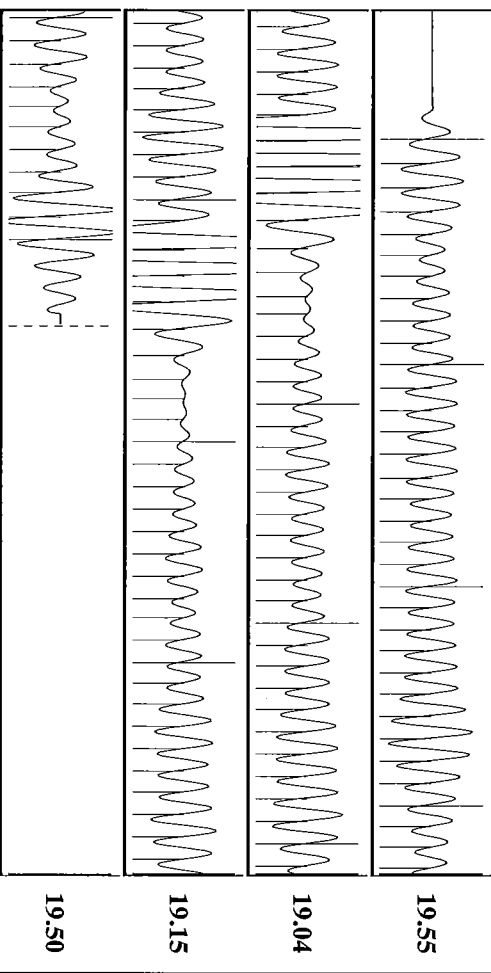


Group: Indian Oil Well: Resort 99 Springs 1 (acquired on: 05/02/17 16:30:58)



Change in Pressure 0.00 psi  
 Change in Time 2.50 min  
 PT 15565  
 Range 0 - 2 psi

Group: Indian Oil Well: Resort 99 Springs 1 (acquired on: 05/02/17 16:30:58)



Acoustic Velocity 1263.16 ft/s  
 Joints Per Second 19.2555 Jts/sec  
 Depth to liquid level 4249.26 ft  
 Automatic Collar Count Yes

Joints counted 120  
 Joints to liquid level 129.551  
 Filter Width 15.1527  
 Time to 1st Collar 0.296

Conservation Division  
District Office No. 1  
210 E. Frontview, Suite A  
Dodge City, KS 67801



Phone: 620-682-7933  
<http://kcc.ks.gov/>

Pat Apple, Chairman  
Shari Feist Albrecht, Commissioner  
Jay Scott Emler, Commissioner

Sam Brownback, Governor

May 09, 2017

Anthony Farrar  
Indian Oil Co., Inc.  
PO BOX 209  
2507 SE US 160 HWY  
MEDICINE LODGE, KS 67104-0209

Re: Temporary Abandonment  
API 15-007-21053-00-02  
Resort 99 Springs 1  
SW/4 Sec.25-30S-12W  
Barber County, Kansas

Dear Anthony Farrar:

"Your temporary abandonment (TA) application for the well listed above has been approved. In accordance with K.A.R. 82-3-111 the TA status of this well will expire 05/09/2018.

- \* If you return this well to service or plug it, please notify the District Office.
- \* If you sell this well you are required to file a Transfer of Operator form, T-1.
- \* If the well will remain temporarily abandoned, you must submit a new TA application, CP-111, before 05/09/2018.

You may contact me at the number above if you have questions.

Very truly yours,

Michael Maier"