



TEMPORARY ABANDONMENT WELL APPLICATION

All blanks must be complete

OPERATOR: License# \_\_\_\_\_  
Name: \_\_\_\_\_  
Address 1: \_\_\_\_\_  
Address 2: \_\_\_\_\_  
City: \_\_\_\_\_ State: \_\_\_\_\_ Zip: \_\_\_\_\_ + \_\_\_\_\_  
Contact Person: \_\_\_\_\_  
Phone: (\_\_\_\_\_) \_\_\_\_\_  
Contact Person Email: \_\_\_\_\_  
Field Contact Person: \_\_\_\_\_  
Field Contact Person Phone: (\_\_\_\_\_) \_\_\_\_\_

API No. 15- \_\_\_\_\_  
Spot Description: \_\_\_\_\_  
\_\_\_\_ - \_\_\_\_ - \_\_\_\_ - \_\_\_\_ Sec. \_\_\_\_\_ Twp. \_\_\_\_\_ S. R. \_\_\_\_\_  E  W  
\_\_\_\_\_ feet from  N /  S Line of Section  
\_\_\_\_\_ feet from  E /  W Line of Section  
GPS Location: Lat: \_\_\_\_\_, Long: \_\_\_\_\_  
(e.g. xx.xxxxx) (e.g. -xxx.xxxxx)  
Datum:  NAD27  NAD83  WGS84  
County: \_\_\_\_\_ Elevation: \_\_\_\_\_  GL  KB  
Lease Name: \_\_\_\_\_ Well #: \_\_\_\_\_  
Well Type: (check one)  Oil  Gas  OG  WSW  Other: \_\_\_\_\_  
 SWD Permit #: \_\_\_\_\_  ENHR Permit #: \_\_\_\_\_  
 Gas Storage Permit #: \_\_\_\_\_  
Spud Date: \_\_\_\_\_ Date Shut-In: \_\_\_\_\_

	Conductor	Surface	Production	Intermediate	Liner	Tubing
Size						
Setting Depth						
Amount of Cement						
Top of Cement						
Bottom of Cement						

Casing Fluid Level from Surface: \_\_\_\_\_ How Determined? \_\_\_\_\_ Date: \_\_\_\_\_  
Casing Squeeze(s): \_\_\_\_\_ to \_\_\_\_\_ w / \_\_\_\_\_ sacks of cement, \_\_\_\_\_ to \_\_\_\_\_ w / \_\_\_\_\_ sacks of cement. Date: \_\_\_\_\_  
(top) (bottom) (top) (bottom)  
Do you have a valid Oil & Gas Lease?  Yes  No  
Depth and Type:  Junk in Hole at \_\_\_\_\_  Tools in Hole at \_\_\_\_\_ Casing Leaks:  Yes  No Depth of casing leak(s): \_\_\_\_\_  
(depth) (depth)  
Type Completion:  ALT. I  ALT. II Depth of:  DV Tool: \_\_\_\_\_ w / \_\_\_\_\_ sacks of cement  Port Collar: \_\_\_\_\_ w / \_\_\_\_\_ sack of cement  
(depth) (depth)  
Packer Type: \_\_\_\_\_ Size: \_\_\_\_\_ Inch Set at: \_\_\_\_\_ Feet  
Total Depth: \_\_\_\_\_ Plug Back Depth: \_\_\_\_\_ Plug Back Method: \_\_\_\_\_

Geological Data:

Formation Name	Formation Top	Formation Base	Completion Information
1. _____	At: _____	to _____ Feet	Perforation Interval _____ to _____ Feet or Open Hole Interval _____ to _____ Feet
2. _____	At: _____	to _____ Feet	Perforation Interval _____ to _____ Feet or Open Hole Interval _____ to _____ Feet

UNDER PENALTY OF PERJURY I HEREBY ATTEST THAT THE INFORMATION CONTAINED HEREIN IS TRUE AND CORRECT TO THE BEST OF MY KNOWLEDGE

Submitted Electronically

**Do NOT Write in This Space - KCC USE ONLY**

Date Tested: \_\_\_\_\_ Results: \_\_\_\_\_ Date Plugged: \_\_\_\_\_ Date Repaired: \_\_\_\_\_ Date Put Back in Service: \_\_\_\_\_

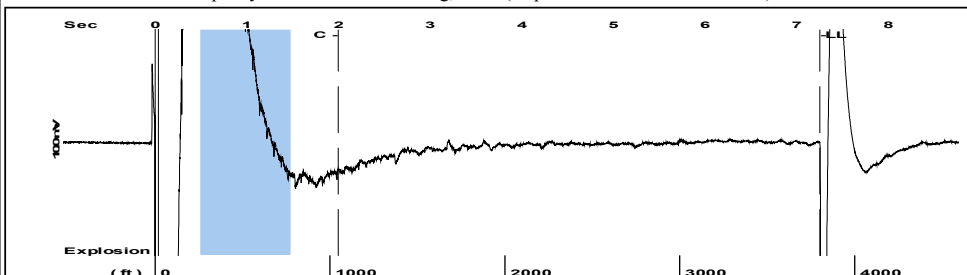
Review Completed by: \_\_\_\_\_ Comments: \_\_\_\_\_

TA Approved:  Yes  Denied Date: \_\_\_\_\_

Mail to the Appropriate KCC Conservation Office:

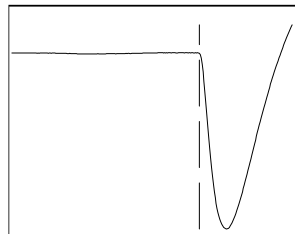
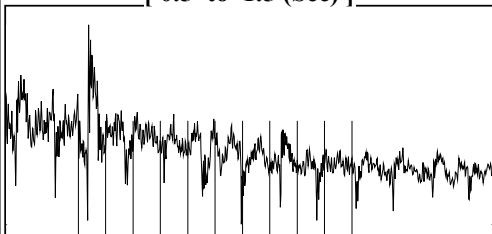
	KCC District Office #1 - 210 E. Frontview, Suite A, Dodge City, KS 67801	Phone 620.682.7933
	KCC District Office #2 - 3450 N. Rock Road, Building 600, Suite 601, Wichita, KS 67226	Phone 316.337.7400
	KCC District Office #3 - 1500 SW Seventh Steet, Chanute, KS 66720	Phone 620.432.2300
	KCC District Office #4 - 2301 E. 13th Street, Hays, KS 67601-2651	Phone 785.261.6250

Group: MyWells Well: Brenging, H #2 (acquired on: 05/08/17 09:37:51 )



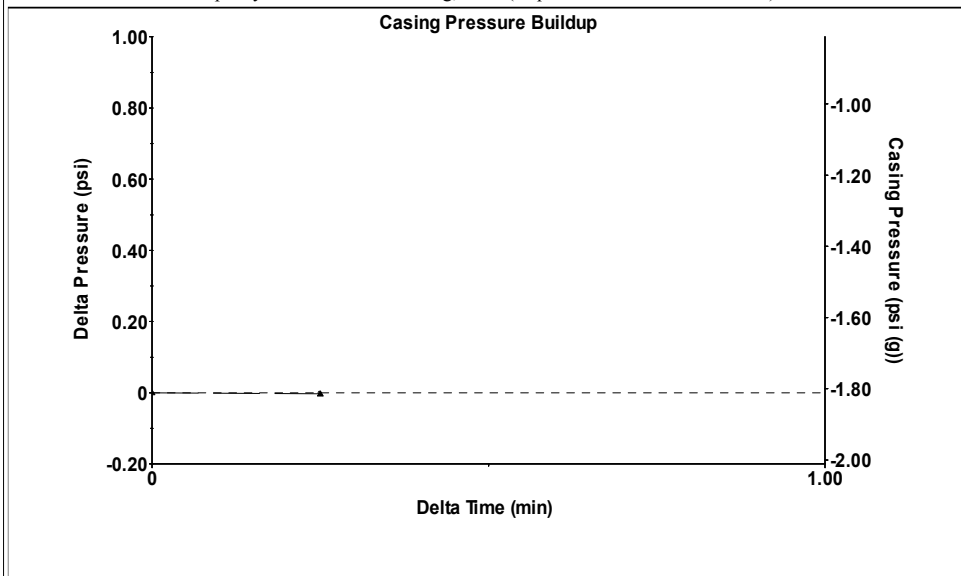
Filter Type High Pass Automatic Collar Count Yes Time 7.255 sec  
 Manual Acoustic Veloc 1128.11 ft/s Manual JTS/sec 17.7936 Joints 119.917 Jts  
 Depth 3801.38 ft

[ 0.5 to 1.5 (Sec) ]



Analysis Method: Automatic

Group: MyWells Well: Brenging, H #2 (acquired on: 05/08/17 09:37:51 )

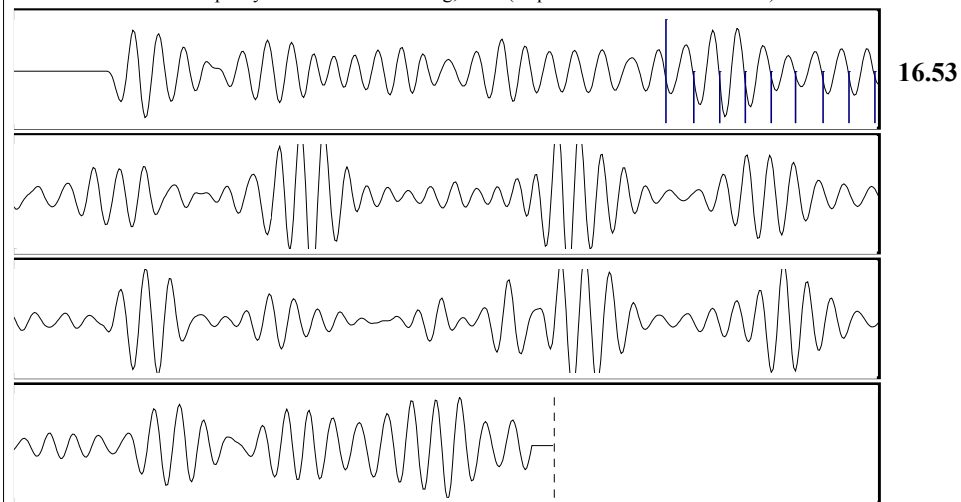


Change in Pressure -0.00 psi PT12830  
 Change in Time 0.25 min Range 0 - ? psi

Group: MyWells Well: Brenging, H #2 (acquired on: 05/08/17 09:37:51 )

Production Current	Potential	Casing Pressure	Static
Oil -*-	-*- BBL/D	-1.8 psi (g)	
Water -*-	-*- BBL/D	Casing Pressure Buildup	Oil Column Height
Gas -*-	-*- Mscf/D	-0.003 psi	MD -*- ft
		0.25 min	
IPR Method	Vogel	Gas/Liquid Interface Pressure	Water Column Height
PBHP/SBHP	-*-	-0.2 psi (g)	MD -*- ft
Production Efficiency	0.0		
Oil 40 deg.API		Liquid Level Depth	
Water 1.05 Sp.Gr.H2O		3801.38 ft	
Gas 0.94 Sp.Gr.AIR		Pump Intake Depth	
		-*- ft	
Acoustic Velocity 1047.93 ft/s		Formation Depth	
		4234.00 ft	
		Static BHP	
		196.5 psi (g)	

Group: MyWells Well: Brenging, H #2 (acquired on: 05/08/17 09:37:51 )



Acoustic Velocity 1047.93 ft/s Joints counted 8  
 Joints Per Second 16.5289 jts/sec Joints to liquid level 119.917  
 Depth to liquid level 3801.38 ft Filter Width 15.7936 19.7936  
 Automatic Collar Count Yes Time to 1st Collar 1.512 1.996

May 09, 2017

Jim Farthing  
Empire Energy E&P, LLC  
345 RIVERVIEW ST., STE 540  
WICHITA, KS 67203-4262

Re: Temporary Abandonment  
API 15-097-21407-00-00  
BRENSING H 2  
SE/4 Sec.20-27S-20W  
Kiowa County, Kansas

Dear Jim Farthing:

"Your temporary abandonment (TA) application for the well listed above has been approved. In accordance with K.A.R. 82-3-111 the TA status of this well will expire 05/09/2018.

- \* If you return this well to service or plug it, please notify the District Office.
- \* If you sell this well you are required to file a Transfer of Operator form, T-1.
- \* If the well will remain temporarily abandoned, you must submit a new TA application, CP-111, before 05/09/2018.

You may contact me at the number above if you have questions.

Very truly yours,

Michael Maier"