



TEMPORARY ABANDONMENT WELL APPLICATION

All blanks must be complete

OPERATOR: License# \_\_\_\_\_  
Name: \_\_\_\_\_  
Address 1: \_\_\_\_\_  
Address 2: \_\_\_\_\_  
City: \_\_\_\_\_ State: \_\_\_\_\_ Zip: \_\_\_\_\_ + \_\_\_\_\_  
Contact Person: \_\_\_\_\_  
Phone:( \_\_\_\_\_ ) \_\_\_\_\_  
Contact Person Email: \_\_\_\_\_  
Field Contact Person: \_\_\_\_\_  
Field Contact Person Phone: ( \_\_\_\_\_ ) \_\_\_\_\_

API No. 15- \_\_\_\_\_  
Spot Description: \_\_\_\_\_  
\_\_\_\_ - \_\_\_\_ - \_\_\_\_ - \_\_\_\_ Sec. \_\_\_\_\_ Twp. \_\_\_\_\_ S. R. \_\_\_\_\_  E  W  
\_\_\_\_\_ feet from  N /  S Line of Section  
\_\_\_\_\_ feet from  E /  W Line of Section  
GPS Location: Lat: \_\_\_\_\_, Long: \_\_\_\_\_  
(e.g. xx.xxxxx) (e.g. -xxx.xxxxx)  
Datum:  NAD27  NAD83  WGS84  
County: \_\_\_\_\_ Elevation: \_\_\_\_\_  GL  KB  
Lease Name: \_\_\_\_\_ Well #: \_\_\_\_\_  
Well Type: (check one)  Oil  Gas  OG  WSW  Other: \_\_\_\_\_  
 SWD Permit #: \_\_\_\_\_  ENHR Permit #: \_\_\_\_\_  
 Gas Storage Permit #: \_\_\_\_\_  
Spud Date: \_\_\_\_\_ Date Shut-In: \_\_\_\_\_

|                  | Conductor | Surface | Production | Intermediate | Liner | Tubing |
|------------------|-----------|---------|------------|--------------|-------|--------|
| Size             |           |         |            |              |       |        |
| Setting Depth    |           |         |            |              |       |        |
| Amount of Cement |           |         |            |              |       |        |
| Top of Cement    |           |         |            |              |       |        |
| Bottom of Cement |           |         |            |              |       |        |

Casing Fluid Level from Surface: \_\_\_\_\_ How Determined? \_\_\_\_\_ Date: \_\_\_\_\_  
Casing Squeeze(s): \_\_\_\_\_ to \_\_\_\_\_ w / \_\_\_\_\_ sacks of cement, \_\_\_\_\_ to \_\_\_\_\_ w / \_\_\_\_\_ sacks of cement. Date: \_\_\_\_\_  
(top) (bottom) (top) (bottom)  
Do you have a valid Oil & Gas Lease?  Yes  No  
Depth and Type:  Junk in Hole at \_\_\_\_\_  Tools in Hole at \_\_\_\_\_ Casing Leaks:  Yes  No Depth of casing leak(s): \_\_\_\_\_  
(depth) (depth)  
Type Completion:  ALT. I  ALT. II Depth of:  DV Tool: \_\_\_\_\_ w / \_\_\_\_\_ sacks of cement  Port Collar: \_\_\_\_\_ w / \_\_\_\_\_ sack of cement  
(depth) (depth)  
Packer Type: \_\_\_\_\_ Size: \_\_\_\_\_ Inch Set at: \_\_\_\_\_ Feet  
Total Depth: \_\_\_\_\_ Plug Back Depth: \_\_\_\_\_ Plug Back Method: \_\_\_\_\_

Geological Data:

| Formation Name | Formation Top | Formation Base | Completion Information   |
|----------------|---------------|----------------|--|
| 1. _____       | At: _____     | to _____ Feet  | Perforation Interval _____ to _____ Feet or Open Hole Interval _____ to _____ Feet |
| 2. _____       | At: _____     | to _____ Feet  | Perforation Interval _____ to _____ Feet or Open Hole Interval _____ to _____ Feet |

UNDER PENALTY OF PERJURY I HEREBY ATTEST THAT THE INFORMATION CONTAINED HEREIN IS TRUE AND CORRECT TO THE BEST OF MY KNOWLEDGE

Submitted Electronically

**Do NOT Write in This Space - KCC USE ONLY**

Date Tested: \_\_\_\_\_ Results: \_\_\_\_\_ Date Plugged: \_\_\_\_\_ Date Repaired: \_\_\_\_\_ Date Put Back in Service: \_\_\_\_\_

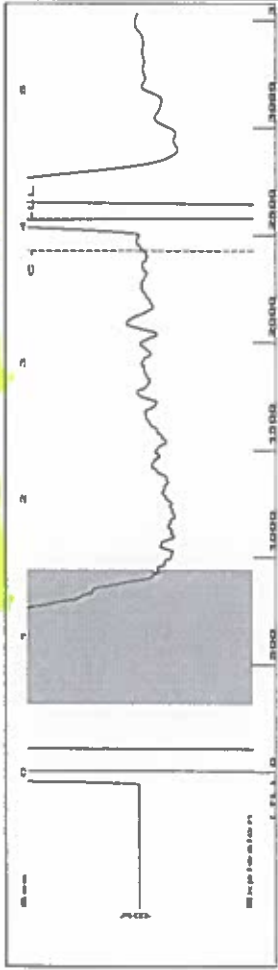
Review Completed by: \_\_\_\_\_ Comments: \_\_\_\_\_

TA Approved:  Yes  Denied Date: \_\_\_\_\_

Mail to the Appropriate KCC Conservation Office:

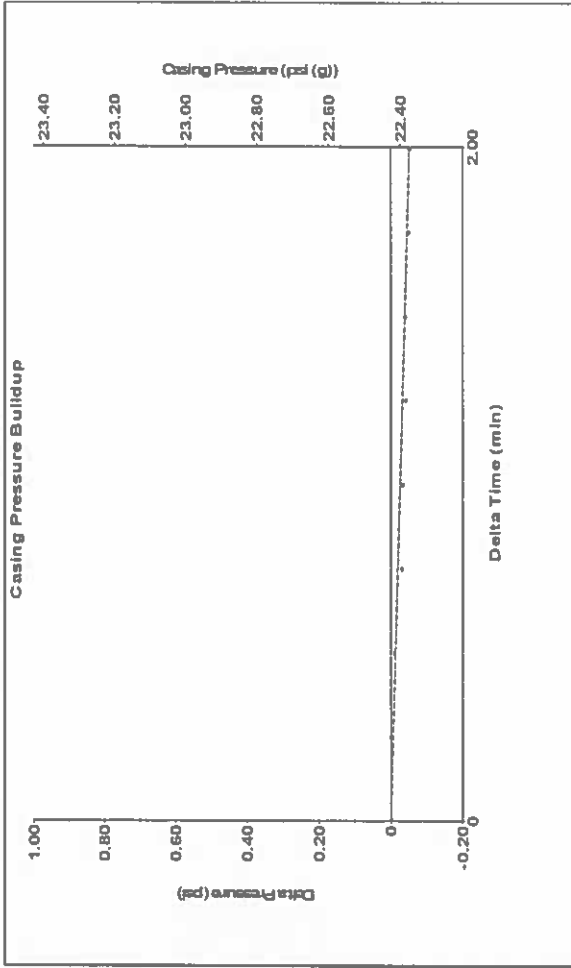
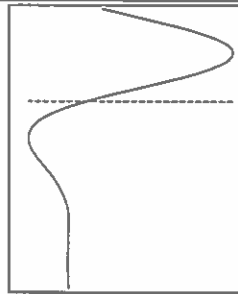
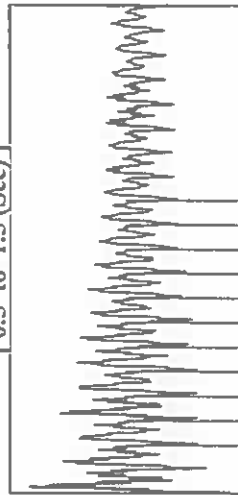
|  |  |                    |
|--|--|--------------------|
|  | KCC District Office #1 - 210 E. Frontview, Suite A, Dodge City, KS 67801               | Phone 620.682.7933 |
|  | KCC District Office #2 - 3450 N. Rock Road, Building 600, Suite 601, Wichita, KS 67226 | Phone 316.337.7400 |
|  | KCC District Office #3 - 1500 SW Seventh Steet, Chanute, KS 66720                      | Phone 620.432.2300 |
|  | KCC District Office #4 - 2301 E. 13th Street, Hays, KS 67601-2651                      | Phone 785.261.6250 |

Group: TAD Well: Garden B D-1-13 (acquired on: 05/28/17 13:57:07)



Filter Type High Pass Automatic Collar Count Yes  
 Manual Acoustic Veloc 1257.94 ft/s Manual JTS/sec 19,8413  
 Time 4.059 sec  
 Joints 81,3174 Jts  
 Depth 2577.76 ft

[ 0.5 to 1.5 (Sec) ]



Change in Pressure -0.05 psi PT8746  
 Change in Time 2.00 min Range

Group: TAD Well: Garden B D-1-13 (acquired on: 05/28/17 13:57:07)

Analysis Method: Automatic

Group: TAD Well: Garden B D-1-13 (acquired on: 05/28/17 13:57:07)

|                                      |              |                               |              |
|--------------------------------------|--------------|-------------------------------|--------------|
| Production                           | Potential    | Casing Pressure               | 22.4 psi (g) |
| Oil -*-                              | BBL/D        | Casing Pressure Buildup       | -0.052 psi   |
| Water -*-                            | Mscf/D       |                               | 2.00 min     |
| Gas -*-                              |              | Gas/Liquid Interface Pressure | 24.8 psi (g) |
| IPR Method                           | Vogel        |                               |              |
| PBHP/SBHP                            | -*-          |                               |              |
| Production Efficiency                | 0.0          |                               |              |
| Oil 40 deg API                       |              | Liquid Level Depth            | 2577.76 ft   |
| Water 1.05 Sp.Gr.H2O                 |              | Pump Intake Depth             | 2630.00 ft   |
| Gas 0.74 Sp.Gr.AIR                   |              | Formation Depth               | 2514.00 ft   |
| Acoustic Velocity                    | 1270.15 ft/s |                               |              |
| Formation Submergence                |              |                               |              |
| Total Gaseous Liquid Column HT (TVD) |              |                               | 52 ft        |
| Equivalent Gas Free Liquid HT (TVD)  |              |                               | 52 ft        |
| Acoustic Test                        |              |                               |              |
|                                      |              | Producing                     |              |
|                                      |              | Annular Gas Flow              | 0 Mscf/D     |
|                                      |              | % Liquid                      | 100 %        |
|                                      |              | Pump Intake                   | 42.5 psi (g) |
|                                      |              | Producing BHP                 | 2.48 psi (g) |
|                                      |              | Static BHP                    | -*- psi (g)  |

Group: TAD Well: Garden B D-1-13 (acquired on: 05/28/17 13:57:07)

|                        |                 |                        |         |
|------------------------|-----------------|------------------------|---------|
| Acoustic Velocity      | 1270.15 ft/s    | Joints counted         | 71      |
| Joints Per Second      | 20.0339 jts/sec | Joints to liquid level | 81,3174 |
| Depth to liquid level  | 2577.76 ft      | Filler Width           | 17,8413 |
| Automatic Collar Count | Yes             | Time to 1st Collar     | 0.276   |
|                        |                 |                        | 3.82    |

Conservation Division  
District Office No. 1  
210 E. Frontview, Suite A  
Dodge City, KS 67801



Phone: 620-682-7933  
<http://kcc.ks.gov/>

Pat Apple, Chairman  
Shari Feist Albrecht, Commissioner  
Jay Scott Emler, Commissioner

Sam Brownback, Governor

June 06, 2017

Katherine McClurkan  
Merit Energy Company, LLC  
13727 Noel Road, Suite 1200  
Dallas, TX 75240

Re: Temporary Abandonment  
API 15-093-20805-00-01  
Garden B D1-13  
NE/4 Sec.13-23S-35W  
Kearny County, Kansas

Dear Katherine McClurkan:

"Your temporary abandonment (TA) application for the well listed above has been approved. In accordance with K.A.R. 82-3-111 the TA status of this well will expire 06/06/2018.

- \* If you return this well to service or plug it, please notify the District Office.
- \* If you sell this well you are required to file a Transfer of Operator form, T-1.
- \* If the well will remain temporarily abandoned, you must submit a new TA application, CP-111, before 06/06/2018.

You may contact me at the number above if you have questions.

Very truly yours,

Michael Maier"