



TEMPORARY ABANDONMENT WELL APPLICATION

OPERATOR: License# _____
 Name: _____
 Address 1: _____
 Address 2: _____
 City: _____ State: _____ Zip: _____ + _____
 Contact Person: _____
 Phone: (_____) _____
 Contact Person Email: _____
 Field Contact Person: _____
 Field Contact Person Phone: (_____) _____

API No. 15- _____
 Spot Description: _____
 _____ - _____ - _____ - _____ Sec. _____ Twp. _____ S. R. _____ E W
 _____ feet from N / S Line of Section
 _____ feet from E / W Line of Section
 GPS Location: Lat: _____, Long: _____
(e.g. xx.xxxxx) (e.g. -xxx.xxxxx)
 Datum: NAD27 NAD83 WGS84
 County: _____ Elevation: _____ GL KB
 Lease Name: _____ Well #: _____
 Well Type: (check one) Oil Gas OG WSW Other: _____
 SWD Permit #: _____ ENHR Permit #: _____
 Gas Storage Permit #: _____
 Spud Date: _____ Date Shut-In: _____

	Conductor	Surface	Production	Intermediate	Liner	Tubing
Size						
Setting Depth						
Amount of Cement						
Top of Cement						
Bottom of Cement						

Casing Fluid Level from Surface: _____ How Determined? _____ Date: _____

Casing Squeeze(s): _____ to _____ w / _____ sacks of cement, _____ to _____ w / _____ sacks of cement. Date: _____
(top) (bottom) (top) (bottom)

Do you have a valid Oil & Gas Lease? Yes No

Depth and Type: Junk in Hole at _____ Tools in Hole at _____ Casing Leaks: Yes No Depth of casing leak(s): _____
(depth) (depth)

Type Completion: ALT. I ALT. II Depth of: DV Tool: _____ w / _____ sacks of cement Port Collar: _____ w / _____ sack of cement
(depth) (depth)

Packer Type: _____ Size: _____ Inch Set at: _____ Feet

Total Depth: _____ Plug Back Depth: _____ Plug Back Method: _____

Geological Data:

Formation Name	Formation Top	Formation Base	Completion Information
1. _____	At: _____	to _____ Feet	Perforation Interval _____ to _____ Feet or Open Hole Interval _____ to _____ Feet
2. _____	At: _____	to _____ Feet	Perforation Interval _____ to _____ Feet or Open Hole Interval _____ to _____ Feet

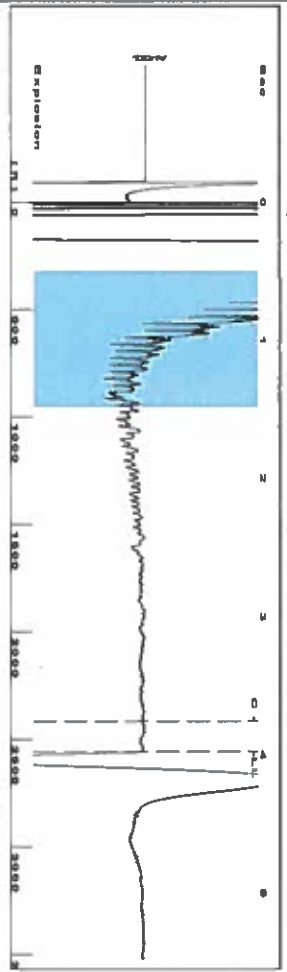
UNDER PENALTY OF PERJURY I HEREBY ATTEST THAT THE INFORMATION CONTAINED HEREIN IS TRUE AND CORRECT TO THE BEST OF MY KNOWLEDGE

Submitted Electronically

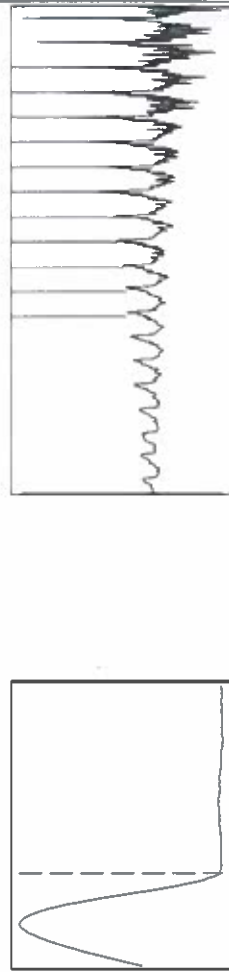
Do NOT Write in This Space - KCC USE ONLY	Date Tested: _____	Results: _____	Date Plugged: _____	Date Repaired: _____	Date Put Back in Service: _____
	Review Completed by: _____ Comments: _____				
TA Approved: <input type="checkbox"/> Yes <input type="checkbox"/> Denied Date: _____					

Mail to the Appropriate KCC Conservation Office:

	KCC District Office #1 - 210 E. Frontview, Suite A, Dodge City, KS 67801	Phone 620.682.7933
	KCC District Office #2 - 3450 N. Rock Road, Building 600, Suite 601, Wichita, KS 67226	Phone 316.337.7400
	KCC District Office #3 - 1500 SW Seventh Steet, Chanute, KS 66720	Phone 620.432.2300
	KCC District Office #4 - 2301 E. 13th Street, Hays, KS 67601-2651	Phone 785.261.6250

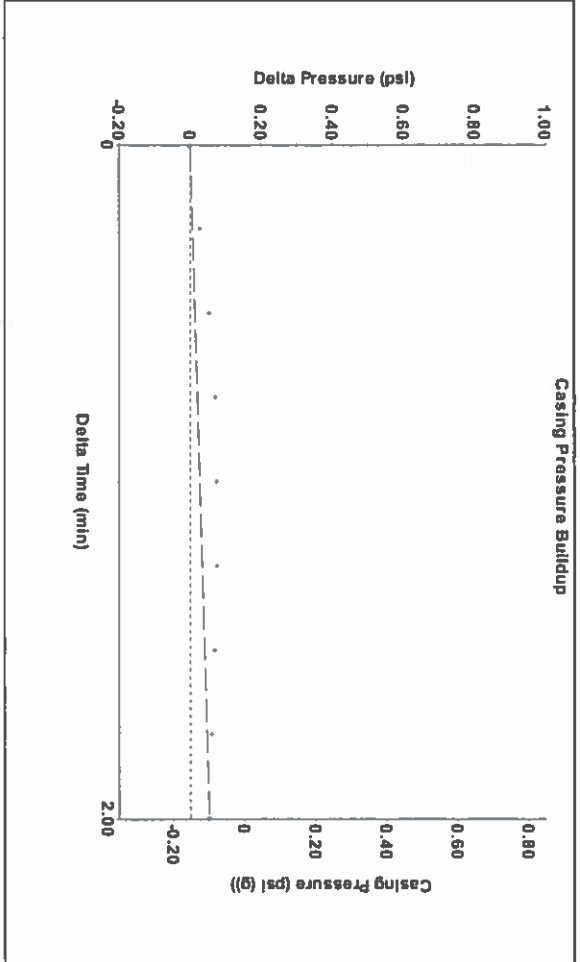
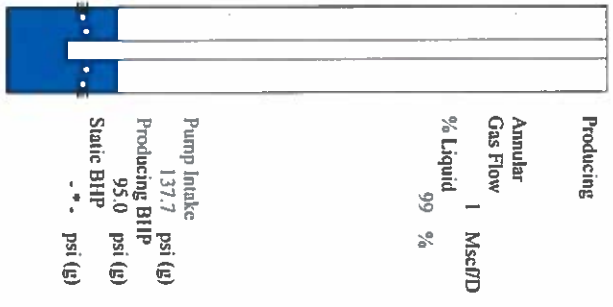


Filter Type High Pass Automatic Collar Count Yes
 Manual Acoustic Velo 1238.28 ft/s Manual JTS/sec 19.5312
 Time 3.978 sec
 Joints 80.6663 Jts
 Depth 2557.12 ft

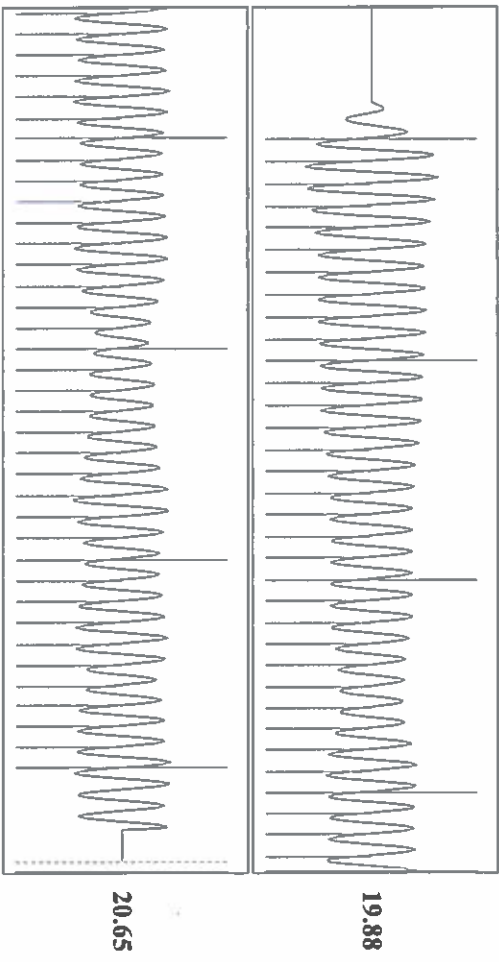


Analysis Method: Automatic

Production	Potential	Casing Pressure	Producing
Oil 0	-*- BB/LD	-0.2 psi (g)	Annular
Water -*-	-*- BB/LD	Casing Pressure Buildup	Gas Flow
Gas -*-	-*- Mscf/D	0.1 psi	% Liquid
IPR Method	Vogel	Gas/Liquid Interface Pressure	1 Mscf/D
PBH/PS/BHIP	-*-	0.8 psi (g)	% Liquid
Production Efficiency	0.0	Liquid Level Depth	99 %
Oil 40 deg API		2557.12 ft	
Water 1.05 Sp.Gr. H2O		Pump Intake Depth	
Gas 0.72 Sp.Gr. AIR		2860.00 ft	
Acoustic Velocity	1285.63 ft/s	Formation Depth	
		2766.00 ft	



Change in Pressure 0.05 psi
 Change in Time 2.00 min
 PT 4009
 Range 0 - 2 psi



Acoustic Velocity 1285.63 ft/s
 Joints Per Second 20.2781 Jts/sec
 Depth to liquid level 2557.12 ft
 Automatic Collar Count Yes
 Joints counted 70
 Joints to liquid level 80.6663
 Filter Width 17.5312
 Time to 1st Collar 0.304

May 16, 2017

Daniel Busch
Linn Operating, Inc.
600 TRAVIS STE 5100
HOUSTON, TX 77002-3018

Re: Temporary Abandonment
API 15-075-20192-00-00
LAMPE JOHN INC 2-8
NE/4 Sec.08-26S-39W
Hamilton County, Kansas

Dear Daniel Busch:

"Your temporary abandonment (TA) application for the well listed above has been approved. In accordance with K.A.R. 82-3-111 the TA status of this well will expire 05/16/2018.

- * If you return this well to service or plug it, please notify the District Office.
- * If you sell this well you are required to file a Transfer of Operator form, T-1.
- * If the well will remain temporarily abandoned, you must submit a new TA application, CP-111, before 05/16/2018.

You may contact me at the number above if you have questions.

Very truly yours,

Michael Maier"