

Geologic Report

Drilling Time and Sample Log

Operator John O. Farmer, Inc.				Elevation KB 1853'	
Lease Dreiling C		No. 1		DF GL 1845'	
API # 15-051-26859-0000				Casing Record Surface 8 5/8" @ 220'	
Field Wildcat				Production 5 1/2" @ 3419'	
Location 2075' FSL & 1995' FEL				Electrical Surveys CNL/CDL, DIL, MEL	
Sec. 24	Twp. 12s	Rge. 16w			
County Ellis		State Kansas			

Formation	Log Tops	Sample Tops	Struct Comp
Anhydrite	976' +877	980' +873	
Base	1015' +838	1015' +838	
Topeka	2765' -912	2765' -912	+6
Heebner	3018' -1165	3018' -1165	+5
Toronto	3038' -1185	3040' -1187	+6
Lansing	3069' -1216	3069' -1216	+5
BKC	3311' -1458	3311' -1458	+8
Arbuckle	3342' -1489	3342' -1489	+5
Total Depth	3418' -1565	3420' -1567	

Drilling Contractor	Discovery Drilling Co. Inc.	Rig #1
Commenced	1-3-2017	Completed 1-11-2017
Samples Saved From	2750'	To RTD
Drilling Time Kept From	2750'	To RTD
Samples Examined From	2750'	To RTD
Geological Supervision From	2750'	To RTD

Displacement **2600'** Mud Type **Chemical**

Summary and Recommendations

The location for the Dreiling C #1 was found via 3-D seismic survey. The new well ran structurally as expected via the survey. Three Drill Stem Tests were conducted, one of which recovered commercial amounts of oil from the Lansing-Kansas City Formation. After all gathered data had been examined the decision was made to run 5 1/2 inch production casing to further evaluate the Dreiling C #1 well.

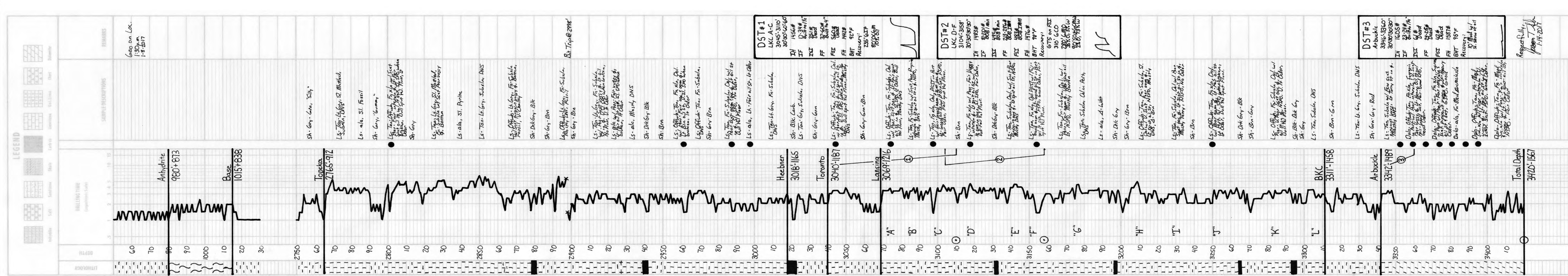
Recommended Perforations

Primary:	LKC F 3152' - 3158'
Secondary:	LKC J 3245' - 3248'
	LKC D 3113' - 3116'
	LKC C 3097' - 3100'
Before Abandonment:	LKC A 3071' - 3073'

Respectfully Submitted,

Jason T Alm
Hard Rock Consulting, Inc.

Reference Well For Structural Comparison Leo J. Dreiling Oil Co. Dreiling G #7
NW NE SW Sec. 24 T12s R16w Ellis Co. Kansas



Respectfully,
Jason T Alm
1-14-2017