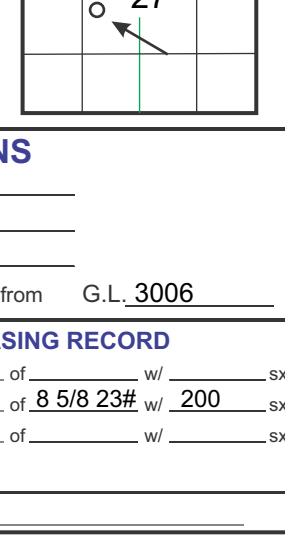


# GEOLOGICAL REPORT

## Larry A. Nicholson

NAD 83  
38 7213183  
101 0824745

COMPANY **Condore Resources Corporation**  
 API # **15-109-21492** FIELD **Wildcat**  
 LEASE **McDaniel** WELL # **#1-27**  
 LOCATION **NW NW NE SW**  
 SURVEY **2360 FSL 1572 FWL**  
 SECTION **27 TWP 15S ROE 34W**  
 COUNTY **Logan** STATE **Kansas**



CONTRACTOR **Southwind** RIG # **8**  
 SPUD **03/09/17 6:00 pm** COMP. **K.B. 3006**  
 RTD **4707 2:45pm 3/18/17** LTD **4708**  
 MUD TYPE **Chemical**  
 MUD YPR **Shamco, MudCo Reid Atkins**  
 DRILLING TIME **FROM 3600 TO RTD**  
 SAMPLES EXAMINED **FROM 3600 TO RTD**  
 GEOLOGICAL SUPERVISION **FROM 3600 TO RTD**  
 WELL SITE GEOLOGIST **LARRY A. NICHOLSON**

ELEVATIONS  
 K.B. **3006**  
 D.F. \_\_\_\_\_  
 G.L. **2996**  
 All measurements from **G.L. 3006**

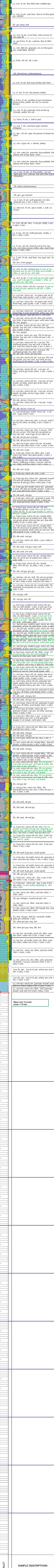
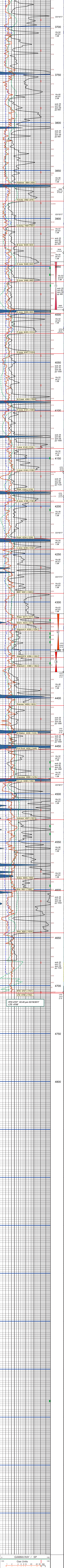
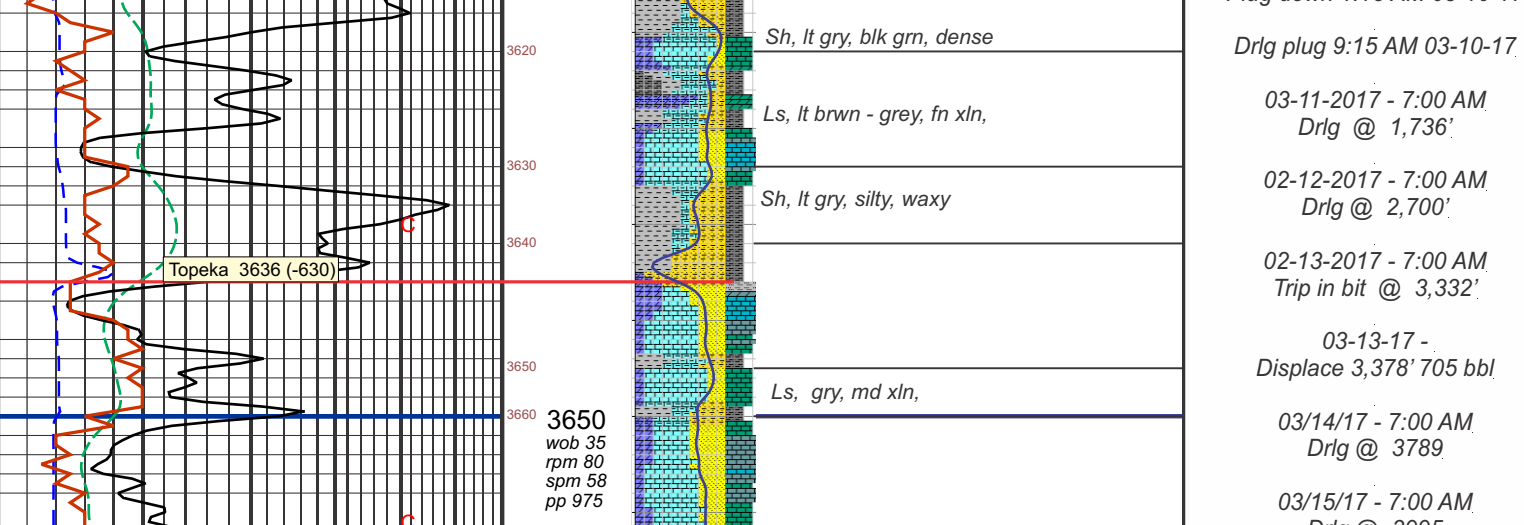
### ELECTRICAL SURVEYS Pioneer, Den, Neu, Dual, Micro

FORMATION		SAMPLE TOPS	SUBSEA DATUM	ELEC LOG TOPS	SUBSEA DATUM	REFERENCE WELL
Anhydrite				2358	+648	2340 +646 +2
Base				2376	+630	2358 +628 +2
Heebner				3864	-858	3852 -866 +8
Lansing				3909	-903	3898 -912 +9
Stark				4164	-1178	4173 -1187 +9
BK				4291	-1295	4290 -1296 +9
Allamore A				4330	-1324	4323 -1337 +13
Pawnee				4408	-1402	4399 -1411 +11
Cherokee				4484	-1478	4474 -1483 +10
Miss				4601	-1595	4610 -1615 +15
Mw				4645	-1639	4666 -1680 +41
RTD				4708	-1701	4800 -1814
LTD				4708	-1702	4803 -1817

REFERENCE WELLS A: Cities Service McDaniel 'A' #1, NE, Sec 27 T15S R34W KB 2986'  
 B: \_\_\_\_\_

REMARKS & RECOMMENDATIONS:  
 Based Sample shows, the Det in the Allamore, and other perforations shows pipe was set  
 Note Rig ROP & Loggers were together on depth

LAN 792, Modified 505, 1111, 412 Hanover, KS 66445 1inch = 25m 4.8 x 97.5 2.16 mm x 2460 mm



**SAMPLE DESCRIPTIONS**  
 2340 - 2376 Sandstone  
 2376 - 3864 Anhydrite  
 3864 - 3909 Anhydrite  
 3909 - 4164 Anhydrite  
 4164 - 4291 Anhydrite  
 4291 - 4330 Anhydrite  
 4330 - 4408 Anhydrite  
 4408 - 4484 Anhydrite  
 4484 - 4601 Anhydrite  
 4601 - 4645 Anhydrite  
 4645 - 4708 Anhydrite

**REMARKS**  
 RTD 02:45 PM 03/09/2017  
 RTD 02:45 AM 03/18/2017  
 BIT RECORD:  
 Surface bit record, 12-14'  
 RR out at 308'  
 RR No. 1, 2, 3, 4, 5, 6, 7, 8  
 RR out at 4707'  
 RR No. 2  
 VERTICAL SURVEYS:  
 1/2" @ 308' of O'  
 1" @ 395'  
 1" @ 4707'  
 1" @ \_\_\_\_\_  
 PUMP DATA:  
 Stroke 14, 1-Liner 6", 7.8 billion  
 DAILY REPORT:  
 03-09-2017 - 6:00 PM Spud  
 Drig to 12 1/4" to 308'  
 Set 8-5/8" 7 1/8 23# set @ 295'  
 200 ex A Comm 3% C/C, 2% gas quality.  
 Plug down 1:15 AM 03-10-17  
 Drig plug 9:15 AM 03-10-17  
 03-11-2017 - 7:00 AM Drig @ 1,736'  
 02-12-2017 - 7:00 AM Drig @ 2,700'  
 03-13-17 - Displace 3,378 705 bbl  
 03/14/17 - 7:00 AM Drig @ 3789'  
 03/15/17 - 7:00 AM Drig @ 3895'  
 03/16/17 - 7:00 AM Drig @ 3917'  
 03/17/17 - 7:00 AM TWH Out #3 @ 4373'  
 03/18/17 - 7:00 AM Drig @ 4590'  
 03/18/17 - 2:45 PM RTD @ 4707'  
 Wiper trip 15 stnds  
 03/18/17 - 8:30 PM Rigup LogTech  
 Finish 12:15 AM  
 Ran 150 lbs new 15 S 5 1/2" CSG Wip Tool @ 2342'  
 Stage 1  
 10% salt, 5% gelsolite (off base returns)  
 Stage 2  
 90/20 QMDC, 1/4# Flo Seal, 30 sxs shale, 15 sxs mousehole, Cmt Quality, Finish 8:15pm 03/18/17  
 Mud Check 5 (3/9/17) at 3988' vis 55 wt 8.6 Chlor 2,100 LCM .2# Ph 12.0  
 Mud Check 6 (3/15/17) at 3995 vis 54 wt 8.9 Chlor 2,200 LCM .1# Ph 11.5, WL 6.4  
 Mud Check 7 (3/15/17) at 4372 vis 54 wt 8.9 Chlor 2,100 LCM .1# Ph 11.5, WL 6.4  
 Mud Check 8 (3/15/17) at 4372 vis 54 wt 8.9 Chlor 2,100 LCM .1# Ph 11.5, WL 6.4  
 Mud Check 9 (3/18/17) at 4596 vis 53 wt 9.0 Chlor 3,900 LCM .1# Ph 10.5, WL 8.0  
 Mud Check 10 (3/18/17) at 4596 vis 53 wt 9.0 Chlor 3,900 LCM .1# Ph 10.5, WL 8.0