



# Fall & Associates

Stake and Elevation Service

P.O. Box 222

Pretty Prairie, KS. 67570

785-243-7506

Date 5-8-17

Invoice Number 0504171

MURFIN DRILLING

1-22

Focke Unit

Operator

Number

Farm Name

Rawlins-KS

22

2s

34w

1980'FNL 100'FWL

County-State

S

T

R

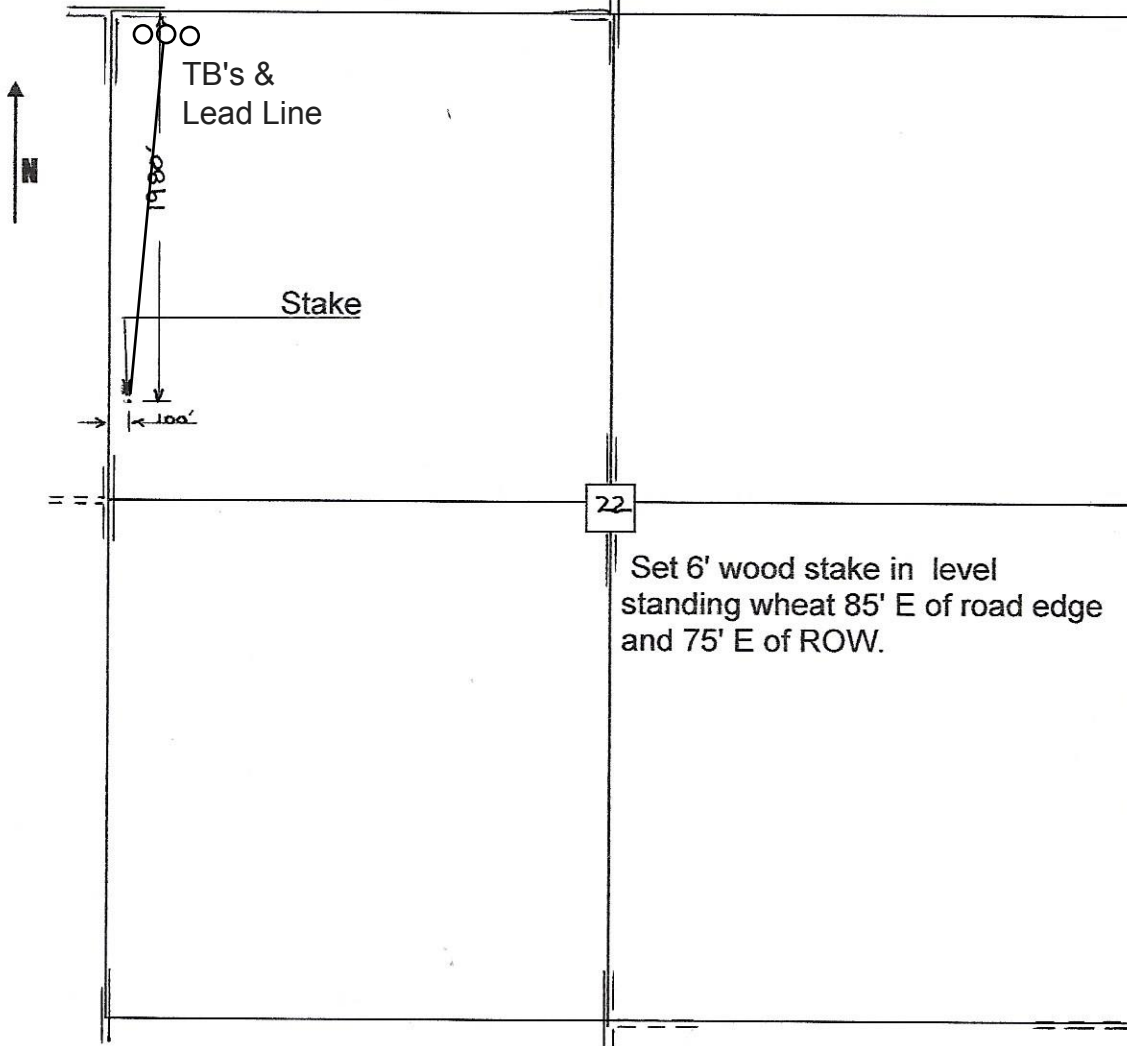
Location

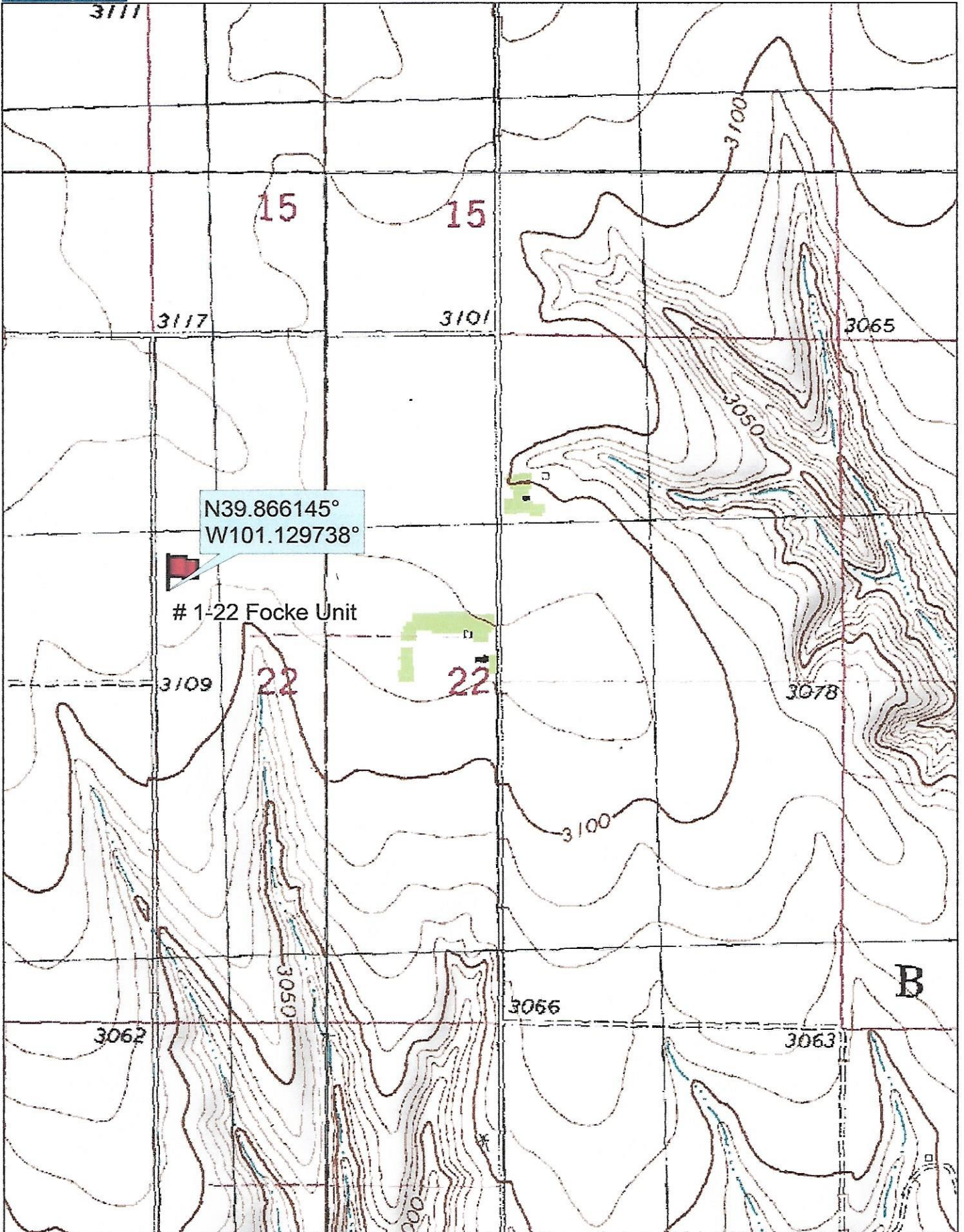
Murfin Drilling  
250 N. Water  
Suite 300  
Wichita, KS. 67202

Elevation 3110 Gr.

Ordered By: Shauna

Scale 1"=1000'

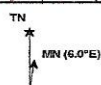




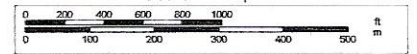
Data use subject to license.

© DeLorme. Topo North America™ 9.

www.delorme.com



Scale 1 : 12,000



1" = 1,000.0 ft Data Zoom 13-1